

WELL LOCATION AND ACREAGE DEDICATION AT

Supersedes Order
Effective 1-1-65

All distances must be from the outer boundaries of the Section.

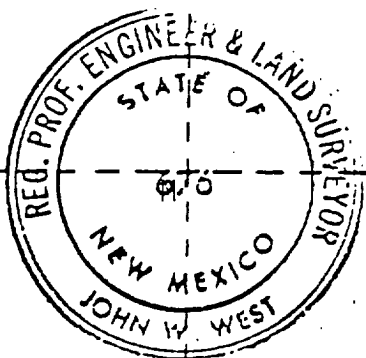
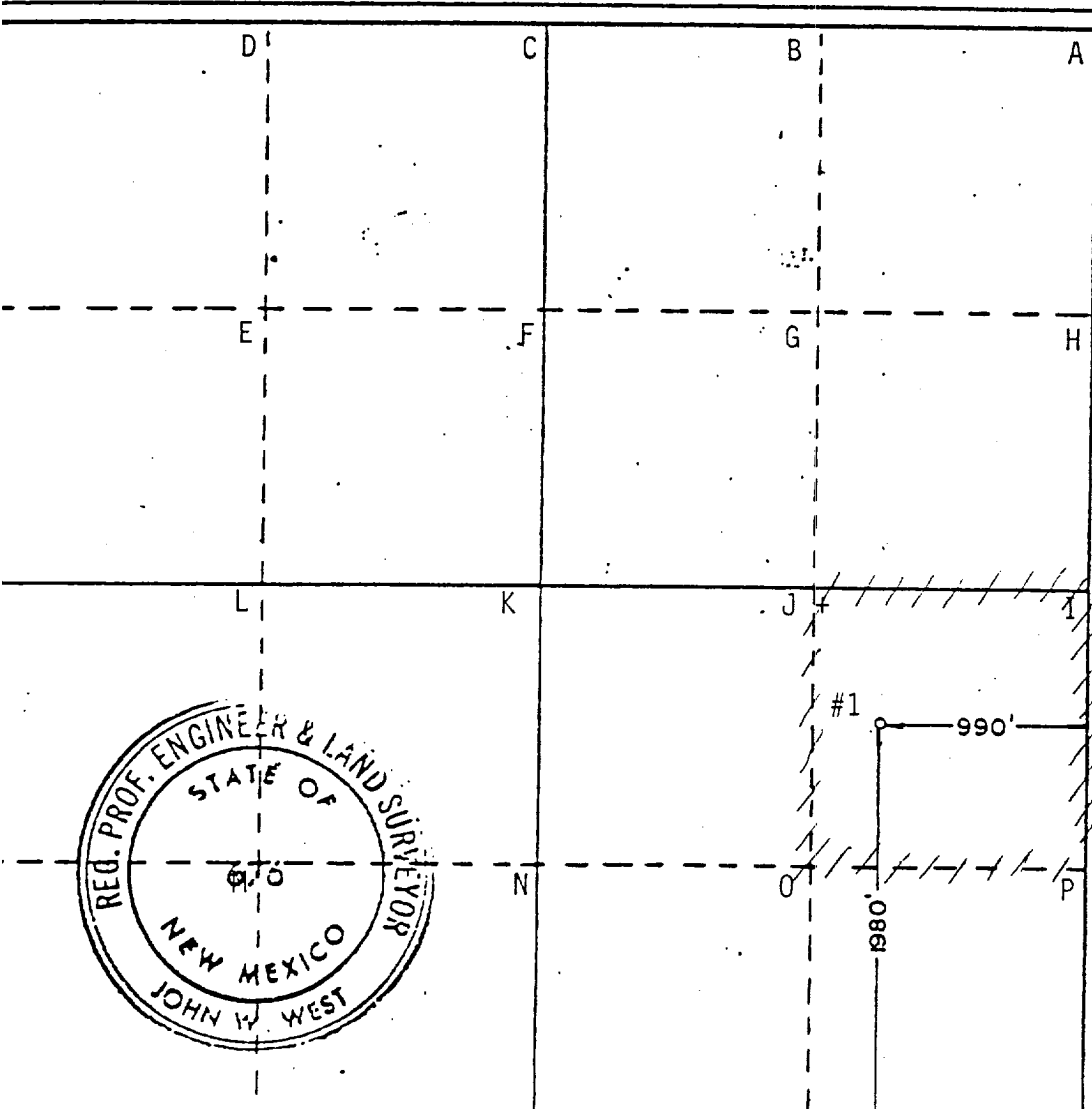
| | | | | | |
|---|-----------------------------|------------------------|------------------|--------------------------------|---------------|
| Operator GENERAL AMERICAN OIL CO. OF TEXAS | | | Lease ROCKY | | Well No. 1 |
| Section Letter I | Section 4 | Township 22 SOUTH | Range 22 EAST | County EDDY | |
| Actual Footage Location of Well: 1980 feet from the SOUTH line and 990 feet from the EAST line | | | | | |
| Ground Level Elev. 4281.6 | Producing Formation Yeso | Pool Wildcat - Yeso | | Dedicated Acreage: 40 Acres | |

1. Outline the acreage dedicated to the subject well by colored pencil or hatchure marks on the plat below.
2. If more than one lease is dedicated to the well, outline each and identify the ownership thereof (both as to working interest and royalty).
3. If more than one lease of different ownership is dedicated to the well, have the interests of all owners been consolidated by communitization, unitization, force-pooling, etc?

☐ Yes ☐ No If answer is "yes," type of consolidation _____

If answer is "no," list the owners and tract descriptions which have actually been consolidated. (Use reverse side of this form if necessary.) _____

No allowable will be assigned to the well until all interests have been consolidated (by communitization, unitization, forced-pooling, or otherwise) or until a non-standard unit, eliminating such interests, has been approved by the Commission.



CERTIFICATION

I hereby certify that the information contained herein is true and complete to the best of my knowledge and belief.

Name

Randall M. Hawkins

Position

Field Superintendent

Company

General American Oil Co. of Texas

Date

March 28, 1983

I hereby certify that the well location shown on this plat was plotted from field notes of actual surveys made by me or under my supervision, and that the same is true and correct to the best of my knowledge and belief.

Date Surveyed

3/9/83

Registered Professional Engineer
and/or Land Surveyor