

UNITED STATES
DEPARTMENT OF THE INTERIOR

GEOLOGICAL SURVEY

APPLICATION FOR PERMIT TO DRILL, DEEPEN, OR PLUG BACK

1a. TYPE OF WORK

DRILL ☒

DEEPEN ☐

PLUG BACK ☐

b. TYPE OF WELL

OIL
WELL ☐

GAS
WELL ☒

OTHER ☐

GIL & GAS
MINERALS ☐ MULTIPLE ☐
MINERALS ☐ MULTIPLE ☐

2. NAME OF OPERATOR

Yates Petroleum Corporation

ROSWELL, NEW MEXICO

3. ADDRESS OF OPERATOR

207 S. 4th, Artesia, New Mexico 88210

4. LOCATION OF WELL (Report location clearly and in accordance with any State requirements.)*

At surface

1980' FNL and 1980' FWL

At proposed prod. zone

same

14. DISTANCE IN MILES AND DIRECTION FROM NEAREST TOWN OR POST OFFICE*

Approximately 4 miles NW of Carlsbad, New Mexico.

15. DISTANCE FROM PROPOSED*

LOCATION TO NEAREST

PROPERTY OR LEASE LINE, FT.

(Also to nearest drlg. unit line, if any)

1980

18. DISTANCE FROM PROPOSED LOCATION*

TO NEAREST WELL, DRILLING, COMPLETED,

OR APPLIED FOR, ON THIS LEASE, FT.

n/a

16. NO. OF ACRES IN LEASE

160

19. PROPOSED DEPTH

11,250'

17. NO. OF ACRES ASSIGNED

TO THIS WELL

320

20. ROTARY OR CABLE TOOLS

Rotary

21. ELEVATIONS (Show whether DF, RT, GR, etc.)

3184'

22. APPROX. DATE WORK WILL START*

ASAP

23.

PROPOSED CASING AND CEMENTING PROGRAM

SIZE OF HOLE	SIZE OF CASING	WEIGHT PER FOOT	SETTING DEPTH	QUANTITY OF CEMENT
17 1/2"	13 3/8"	48# J-55	appr. 400'	400 sx circulated
12 1/4"	9 5/8"	32# J-55	appr. 2600'	1400 sx circulated
7 7/8"	4 1/2" or 4 1/2"	17# K&N	TD	350 s _x

We propose to drill and test the Morrow and intermediate formations. Approximately 400' of surface casing will be set to shut off gravel and caving, and intermediate casing will be set 100' below the Artesian Water Zone. If commercial, will run 4 1/2" or 5 1/2" with 600' cement cover, will perforate and stimulate as needed for production.

MUD PROGRAM: FW gel/LCM to 2000', FW gel to 6900', 6% KCL water to 7900', starch-driskak-KCL and salt gel to TD.

BOP PROGRAM: BOP's and hydril will be installed on 8 5/8" casing and tested daily.

GAS NOT DEDICATED.

IN ABOVE SPACE DESCRIBE PROPOSED PROGRAM: If proposal is to deepen or plug back, give data on present productive zone and proposed new productive zone. If proposal is to drill or deepen directionally, give pertinent data on subsurface locations and measured and true vertical depths. Give blowout preventer program, if any.

24.

SIGNED

[Signature]

TITLE Regulatory Agent

DATE 4/7/83

(This space for Federal or State office use)

PERMIT NO.

APPROVAL DATE

APPROVED BY

CONDITIONS OF APPROVAL, IF ANY

TITLE

[Signature]
Acting Asst. District
Manager for Minerals

DATE

[Handwritten notes]
5/9/83
Posted as per
WD-1011-83
5-13-83

NEW MEXICO OIL CONSERVATION COMMISSION
WELL LOCATION AND ACREAGE DEDICATION PLAT

Form C-102
Supersedes C-128
Effective 1-1-65

All distances must be from the outer boundaries of the Section.

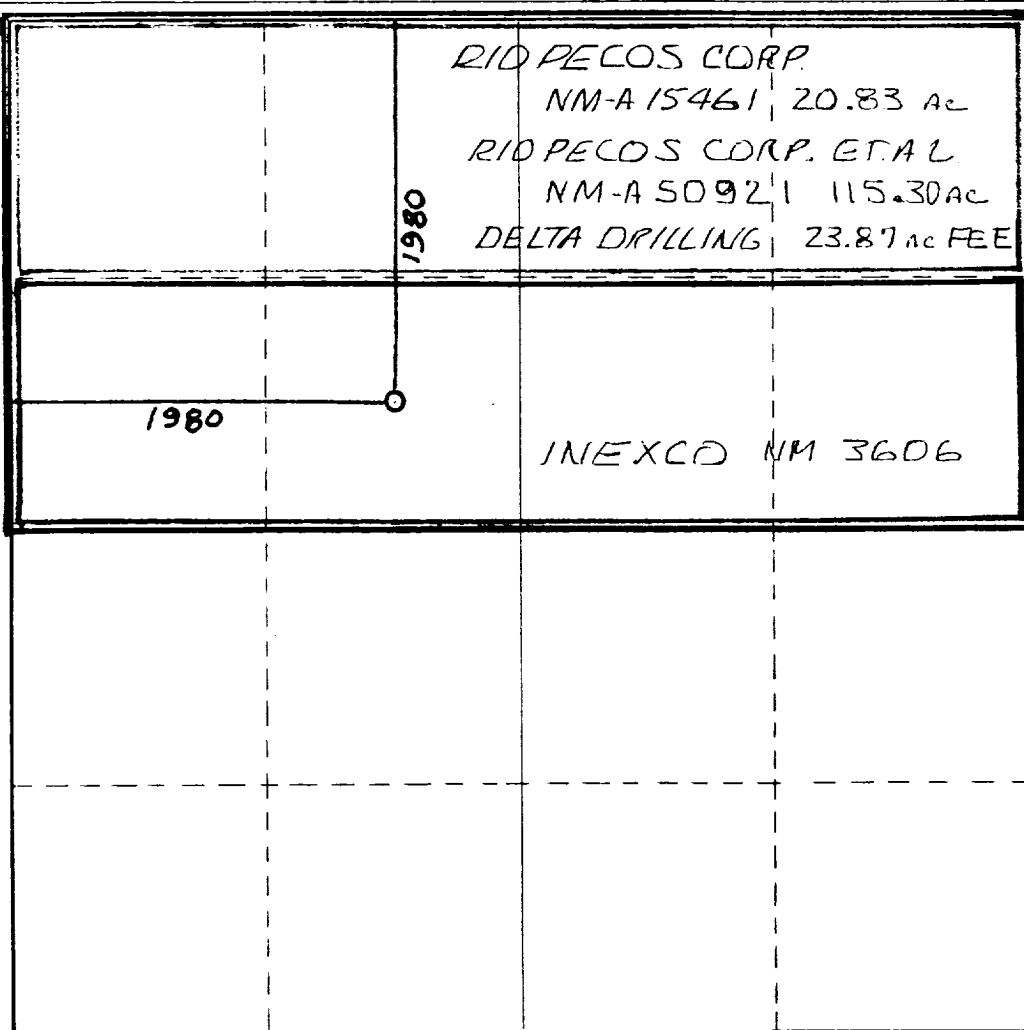
YATES PETROLEUM CORPORATION			Lease Lake Shore XH Federal		Well No. 1
Tract Letter F	Section 11	Township 21 South	Range 26 East	County Eddy	
Actual Footage Location of Well:					
1980 feet from the North line and		1980 feet from the West line			
Ground Level Elev. 3184	Producing Formation MORROW	Pool Avalon Undes. MORROW	Dedicated Acreage: 320 Acres		

1. Outline the acreage dedicated to the subject well by colored pencil or hachure marks on the plat below.
2. If more than one lease is dedicated to the well, outline each and identify the ownership thereof (both as to working interest and royalty).
3. If more than one lease of different ownership is dedicated to the well, have the interests of all owners been consolidated by communitization, unitization, force-pooling, etc?

☒ Yes ☐ No If answer is "yes," type of consolidation TO BE COMMUNITIZED

If answer is "no," list the owners and tract descriptions which have actually been consolidated. (Use reverse side of this form if necessary.)

No allowable will be assigned to the well until all interests have been consolidated (by communitization, unitization, forced-pooling, or otherwise) or until a non-standard unit, eliminating such interests, has been approved by the Commission.



CERTIFICATION

I hereby certify that the information contained herein is true and complete to the best of my knowledge and belief.

Name
GLISERIO RODRIGUEZ

Position
AGENT

Company
YATES PET. CORP.

Date
4-18-83

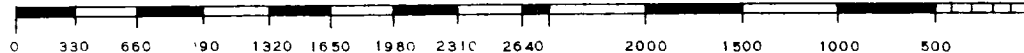
I hereby certify that the well location shown on this plat was plotted from field notes of actual surveys made by me or under my supervision, and that the same is true and correct to the best of my knowledge and belief.

Date Surveyed
March 28, 1983

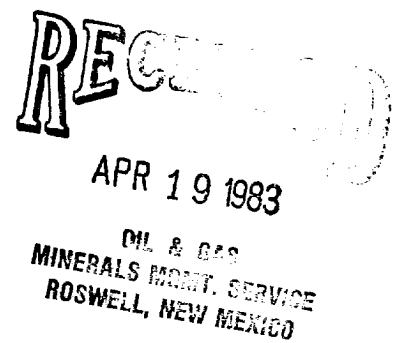
Registered Professional Engineer and/or Land Surveyor

Dan R. Reddy

Certificate No.
NMPE&LS #5412



YATES PETROLEUM CORPORATION
Lake Shore "XH" Federal #1
1980' FNL and 1980' FWL
Section 11-T21S-R24E
Eddy County, New Mexico



In conjunction with Form 9-331C, Application for Permit to Drill subject well, Yates Petroleum Corporation submits the following ten items of pertinent information in accordance with USGS requirements.

1. The geologic surface formation is quaternary alluvium.
2. The estimated tops of geologic markers are as follows:

Yates	390'	Strawn	9385'
Top of Delaware	2420'	Atoka	10105'
Bone Springs Lime	4420'	Morrow	10665'
3rd Bone Sprs. Sand	8010'	Lower Morrow	10920'
Wolfcamp	8385'	Chester Shale	11135'
Cisco	9165'	TD	11250'

3. The estimated depths at which anticipated water, oil or gas formations are expected to be encountered:

Water: Capitan Reef 540'-2420'

Oil or Gas: 2450'-4420', 9440'-9640', 10150'-10300', 10770'-11135'

4. Proposed Casing Program: See Form 9-331C.
5. Pressure Control Equipment: See Form 9-331C.
6. Mud Program: See Form 9-331C.
7. Auxiliary Equipment: Kelly Cock; pit level indicators and flow sensor equipment; sub with full-opening valve on floor, drill pipe connection.
8. Testing, Logging and Coring Program:

Samples: 10' out from under surface casing to TD.
DST's: As warranted.
Coring: One man unit out from under intermediate casing.
Logging: CNL-FDC TD to csg w/GR-CNL onto surface & DLL longs from TD to csg w/min. RxO TD to 6500'.
9. No abnormal pressures or temperatures are anticipated.
10. Anticipated starting date: As soon as possible after approval.

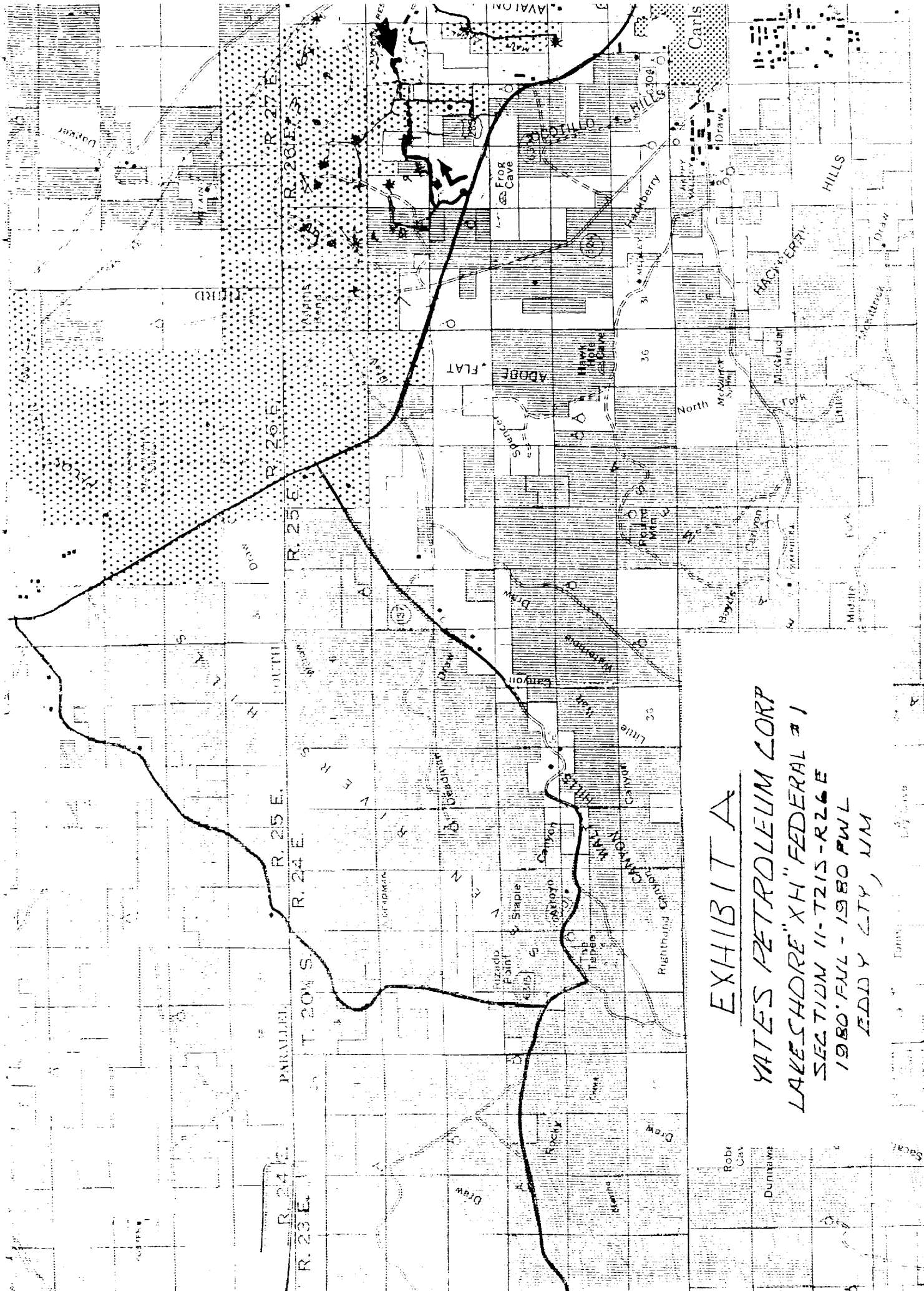


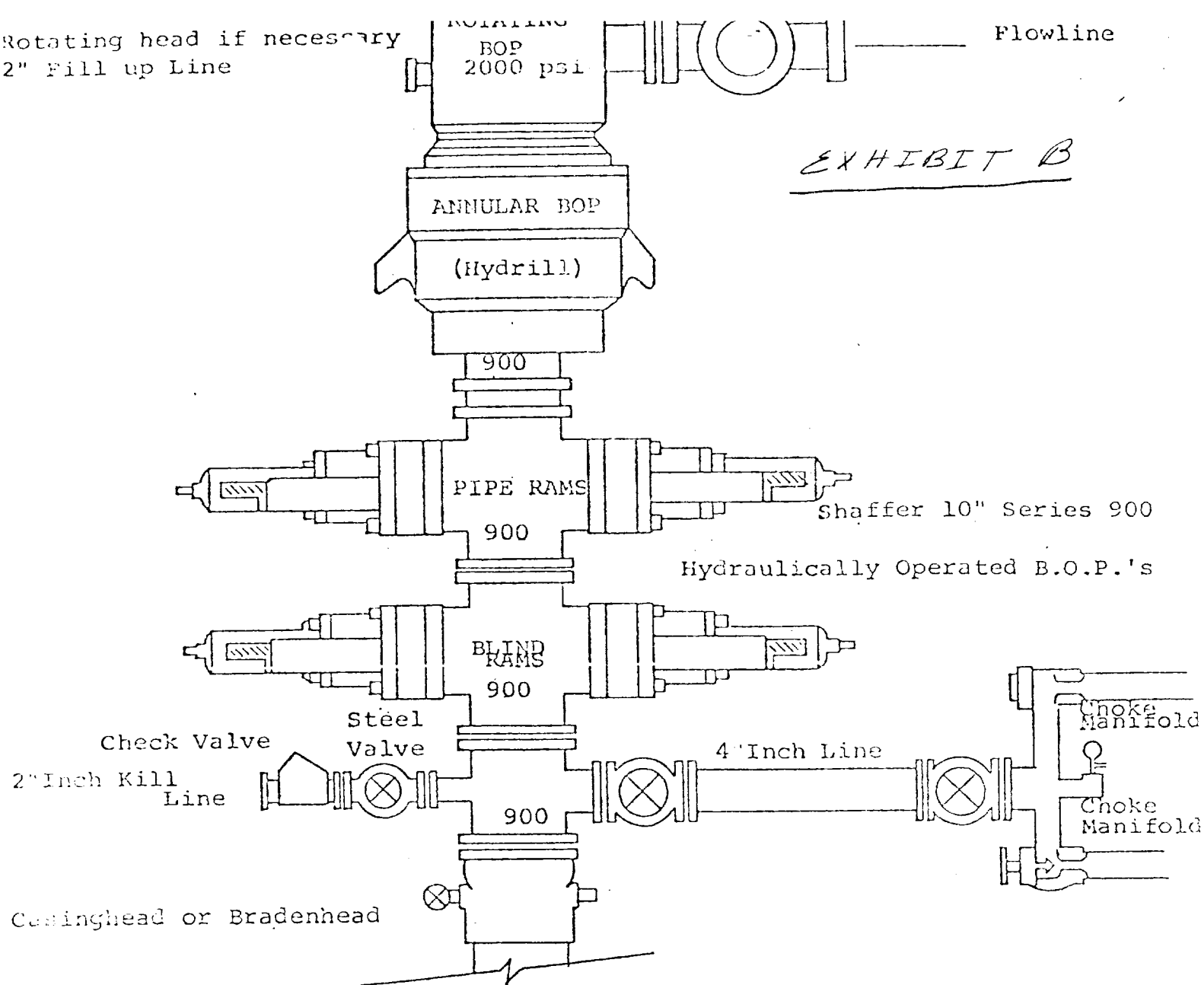
EXHIBIT A
YATES PETROLEUM CORP
LAKE SHORE "XH" FEDERAL #1
SECTION 11-7215-R26E
1980 FUL - 1980 FUL
EDDY CITY, NM

Rotating head if necessary
2" Fill up Line

ROTATING
BOP
2000 psi

Flowline

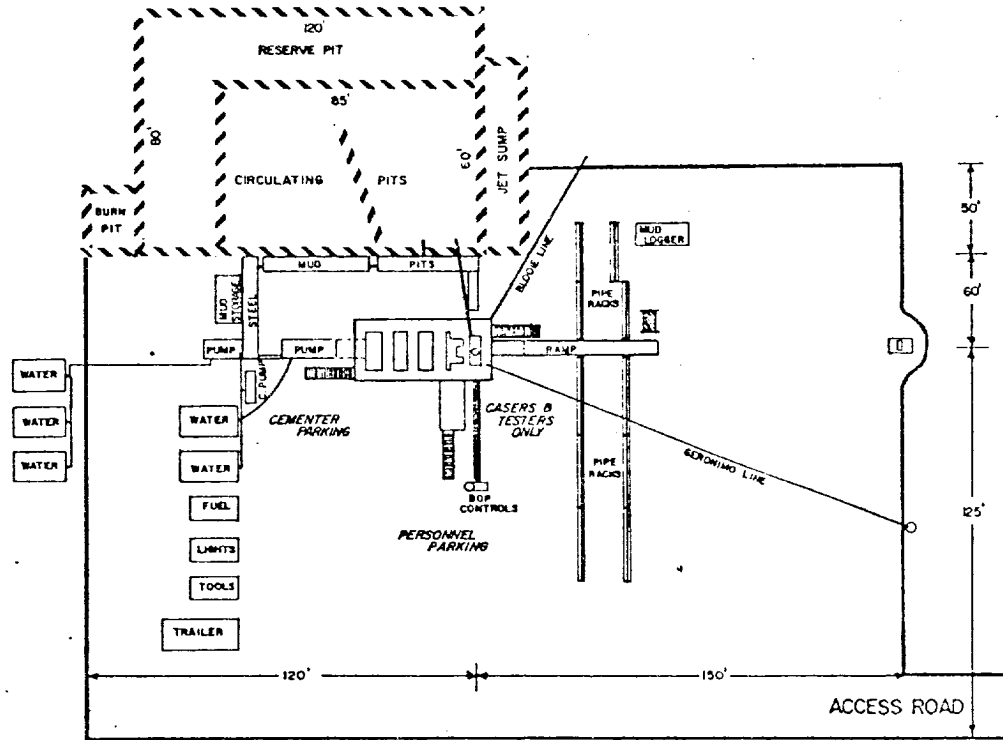
EXHIBIT B



THE FOLLOWING CONSTITUTE MINIMUM BLOWOUT PREVENTER REQUIREMENTS

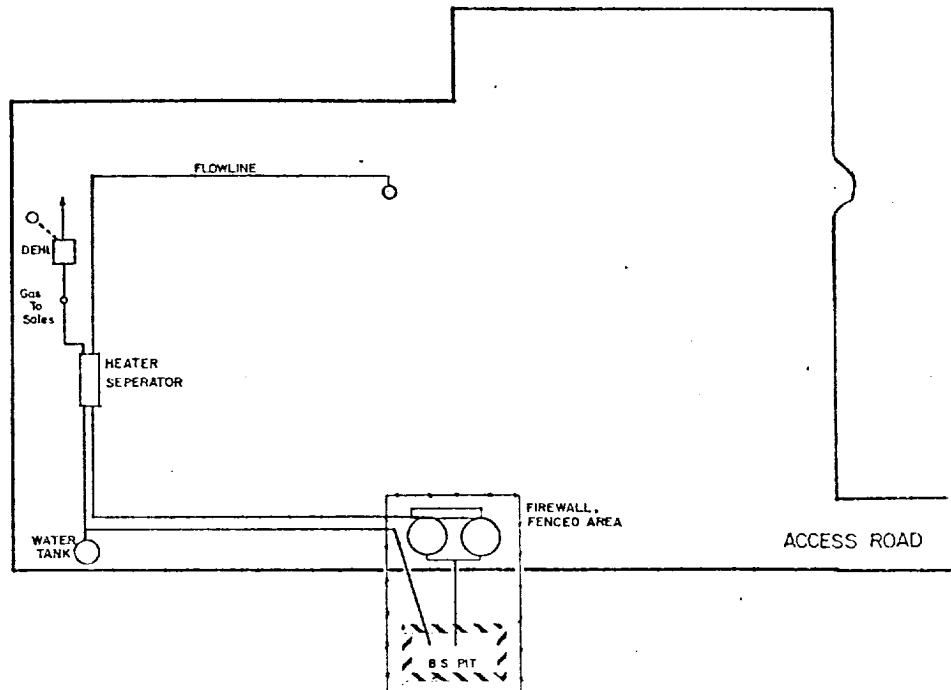
1. All preventers to be hydraulically operated with secondary manual controls installed prior to drilling out from under casing.
2. Choke outlet to be a minimum of 4" diameter.
3. Kill line to be of all steel construction of 2" minimum diameter.
4. All connections from operating manifolds to preventers to be all steel. Hole or tube a minimum of one inch in diameter.
5. The available closing pressure shall be at least 15% in excess of that required with sufficient volume to operate the B.O.P.'s.
6. All connections to and from preventer to have a pressure rating equivalent to that of the B.O.P.'s.
7. Inside blowout preventer to be available on rig floor.
8. Operating controls located a safe distance from the rig floor.
9. Hole must be kept filled on trips below intermediate casing.
10. D. P. float must be installed and used below zone of first gas intrusion.

YATES PETROLEUM CORPORATION



DRILLING RIG LAYOUT

Scale: 1 inch = 50 feet



TANK BATTERY LAYOUT

Scale: 1 inch = 50 feet

Exhibit C