

Submit to Appropriate
District Office
State Lease—4 copies
Fee Lease—3 copies

State of New Mexico
Energy, Minerals and Natural Resources Department

Form C-102
Revised 1-1-89

OIL CONSERVATION DIVISION

DISTRICT I
P.O. Box 1980, Hobbs, NM 88240

P.O. Box 2088
Santa Fe, New Mexico 87504-2088

DISTRICT II
P.O. Drawer DD, Artesia, NM 88210

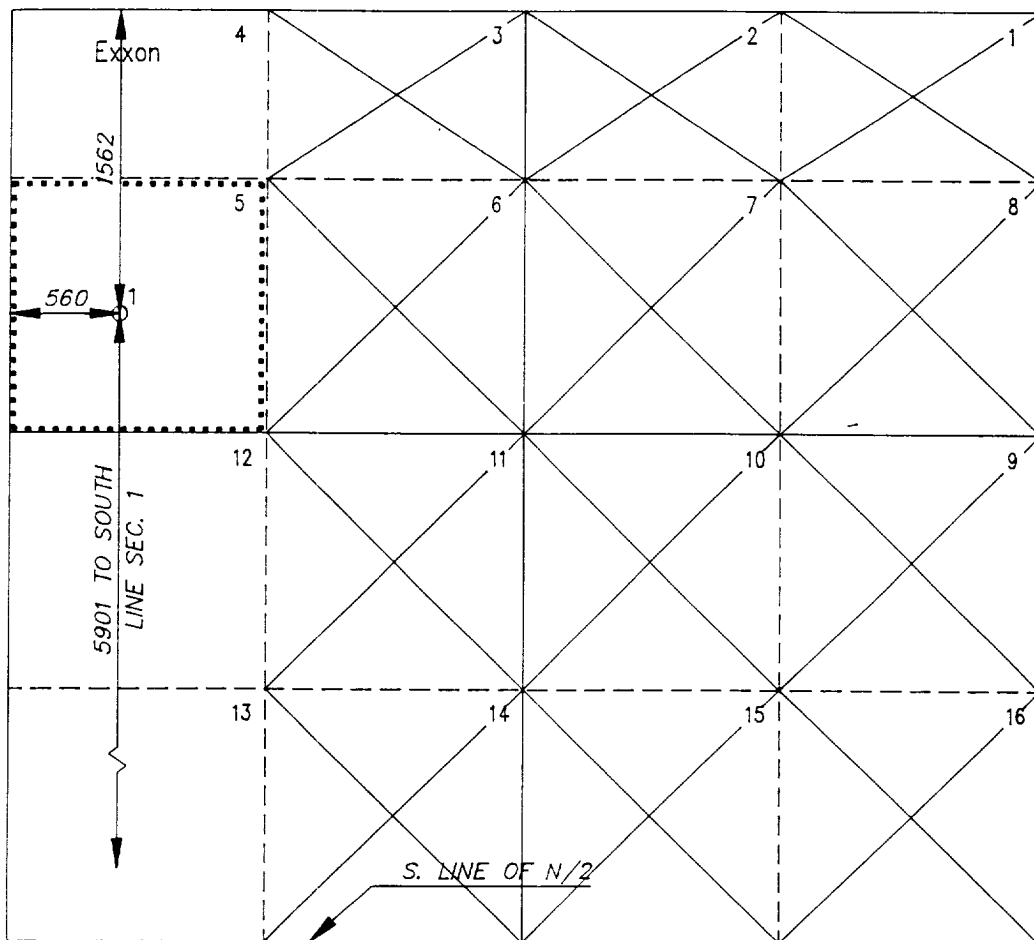
DISTRICT III
1000 Rio Brazos Rd., Aztec, NM 87410

WELL LOCATION AND ACREAGE DEDICATION PLAT

All distances must be from the outer boundaries of the Section.

Operator Exxon Corporation			Lease BURTON FLAT "B" FEDERAL		Well No. 1
Unit Letter LOT 5	Section 1	Township 21S	Range 27E	NMPM	County EDDY
Actual Footage Location of Well: 5940 feet from the SOUTH line and 560 feet from the WEST line.					
Ground level Elev. 3207.0		Producing Formation DELAWARE		Pool UNDESIG. N W FENTON DELAWARE	
Dedicated Acreage: 40 Acres					

- Outline the acreage dedicated to the subject well by colored pencil or hatchure marks on the plat below.
- If more than one lease is dedicated to the well, outline each and identify the ownership thereof (both as to working interest and royalty).
- If more than one lease of different ownership is dedicated to the well, have the interest of all owners been consolidated by communitization, unitization, force-pooling, etc.?
☐ Yes ☐ No If answer is "yes", type of consolidation _____
If answer is "no", list the owners and tract descriptions which have actually been consolidated. (Use reverse side of this form if necessary.) _____
No allowable will be assigned to the well until all interests have been consolidated (by communitization, unitization, forced-pooling, or otherwise) or until a non-standard unit, eliminating such interest, has been approved by the Division.



OPERATOR CERTIFICATION

I hereby certify that the information
contained herein is true and complete to the
best of my knowledge and belief.

Signature C. H. Harper
Printed Name C. H. HARPER
Position PERMITS SUPERVISOR
Company Exxon Corporation
P.O. Box 1600-Midland, Tx.-79702
Date 3-23-83

SURVEYOR CERTIFICATION

I hereby certify that the well location
shown on this plat was plotted from field
notes of actual surveys made by me or
under my supervision, and that the same
is true and correct to the best of my
knowledge and belief.

Date Surveyed 5/10/83
Signature & Seal of
Professional Surveyor

Certificate No.

8 Miles N of CARLSBAD, New Mexico.

C.E. File No. A08094