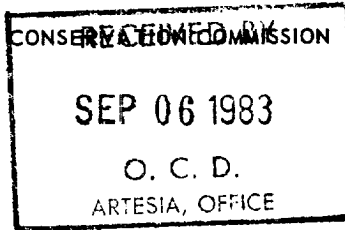


NO. OF COPIES RECEIVED	
DISTRIBUTION	
SANTA FE	✓
FILE	✓
U.S.G.S.	2
LAND OFFICE	✓
OPERATOR	✓

NEW MEXICO OIL CONSERVATION COMMISSION



Form C-101
Revised 1-1-65

31-015-24594

5A. Indicate Type of Lease
STATE ☒ FEE ☐

5. State Oil & Gas Lease No.
V-690

APPLICATION FOR PERMIT TO DRILL, DEEPEN, OR PLUG BACK

1a. Type of Work DRILL <input checked="" type="checkbox"/> DEEPEN <input type="checkbox"/> PLUG BACK <input type="checkbox"/>		7. Unit Agreement Name
b. Type of Well OIL WELL <input checked="" type="checkbox"/> GAS WELL <input type="checkbox"/> OTHER <input type="checkbox"/> SINGLE ZONE <input checked="" type="checkbox"/> MULTIPLE ZONE <input type="checkbox"/>		8. Farm or Lease Name New Mexico "DP" State
2. Name of Operator Exxon Corporation ✓		9. Well No. 1
3. Address of Operator P.O. Box 1600, Midland, TX 79702		10. Field and Pool, or Wildcat Undesig. Avalon
4. Location of Well UNIT LETTER F LOCATED 1980 FEET FROM THE North LINE AND 1980 FEET FROM THE West LINE OF SEC. 28 TWP. 20S RGE. 28E NMPM		12. County Eddy
19. Proposed Depth 5300'		19A. Formation Delaware
20. Rotary or C.T. Rotary		
21. Elevations (Show whether DF, RT, etc.) 3220' GR	21A. Kind & Status Plug. Bond Blanket	21B. Drilling Contractor Unknown
22. Approx. Date Work will start 4th Quarter '83		

23.

PROPOSED CASING AND CEMENT PROGRAM

SIZE OF HOLE	SIZE OF CASING	WEIGHT PER FOOT	SETTING DEPTH	SACKS OF CEMENT	EST. TOP
26"	20"	94	40'	25 sx RediMix	Surface
17 1/2"	13 3/8"	54.5	600'	500 sx	Surface
11"	8 5/8"	24	2500'	700 sx	Tie into Surf. Csg.
7 7/8"	5 1/2"	14-15.5	5300'	700 sx	Tie into Surf. Csg.

MUD: 0-2500' FW 8.4-8.8 PPG
2500'-5300' CBW 8.8-9.4 PPG

BOP: 13 3/8"/Type II-C/2000 PSI
8 5/8"/Type II-C/2000 PSI

APPROVAL VALID FOR 180 DAYS
PERMIT NO. 3-1-84
UNLESS DRILLING UNDERWAY

IN ABOVE SPACE DESCRIBE PROPOSED PROGRAM: IF PROPOSAL IS TO DEEPEN OR PLUG BACK, GIVE DATA ON PRESENT PRODUCTIVE ZONE AND PROPOSED NEW PRODUCTIVE ZONE. GIVE BLOWOUT PREVENTER PROGRAM, IF ANY.

I hereby certify that the information above is true and complete to the best of my knowledge and belief.

Signed Melba Kripling Title Unit Head Date 9/2/83
(This space for State Use)

APPROVED BY Mr. Walker TITLE OIL AND GAS INSPECTOR DATE SEP 09 1983

CONDITIONS OF APPROVAL, IF ANY:

Notify N.M.O.C.C. in sufficient
time to witness cementing
the 8 5/8" casing

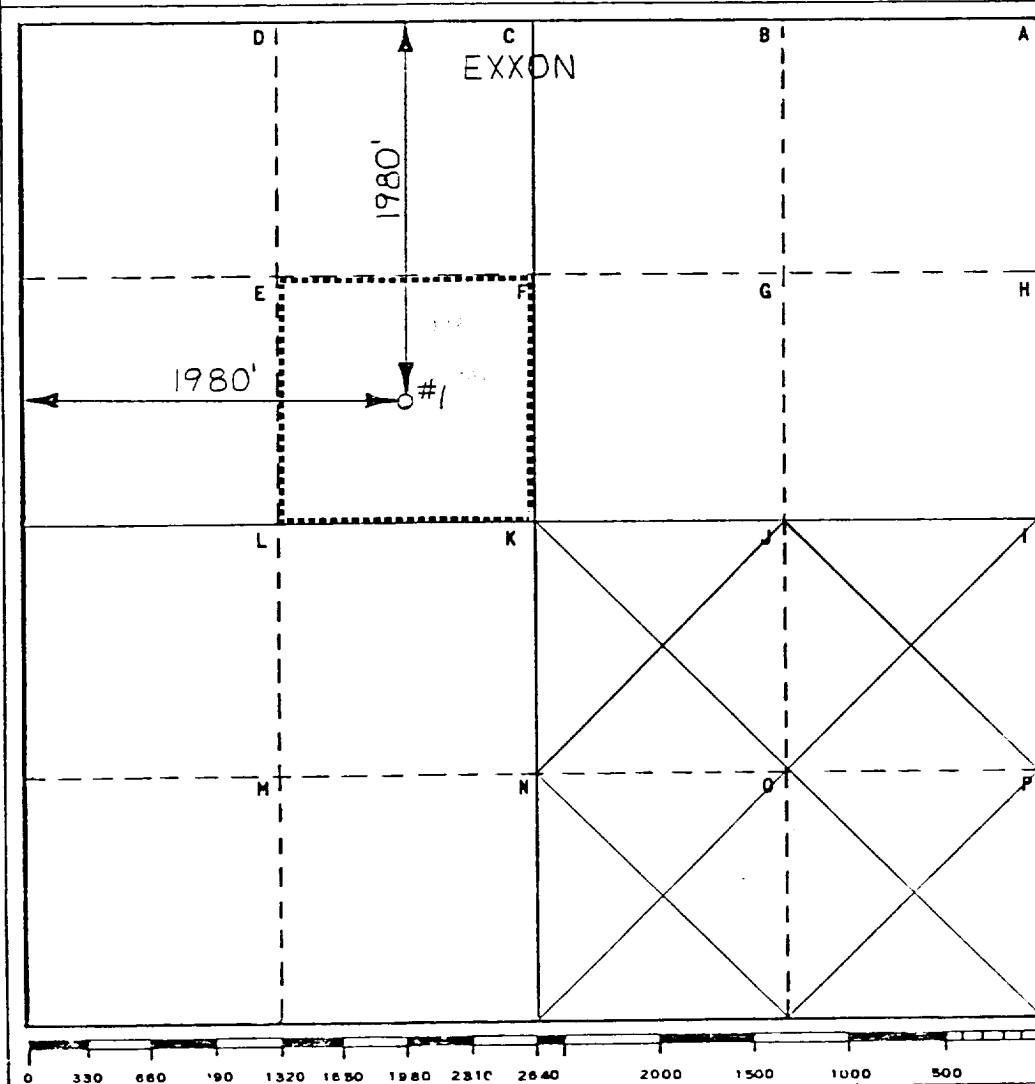
Operator Exxon Corporation		Lease NEW MEXICO "DP" STATE		Well No. 1
Unit Letter F	Section 28	Township 20S	Range 28E	County EDDY
Actual Footage Location of Well: 1980 feet from the NORTH line and 1980 feet from the WEST line				
Ground Level Elev. 3220	Producing Formation DELAWARE	Pool UNDESIG. AVALON	Dedicated Acreage: 40 Acres	

1. Outline the acreage dedicated to the subject well by colored pencil or hachure marks on the plat below.
2. If more than one lease is dedicated to the well, outline each and identify the ownership thereof (both as to working interest and royalty).
3. If more than one lease of different ownership is dedicated to the well, have the interests of all owners been consolidated by communitization, unitization, force-pooling, etc?

☐ Yes ☐ No If answer is "yes," type of consolidation _____

If answer is "no," list the owners and tract descriptions which have actually been consolidated. (Use reverse side of this form if necessary.) _____

No allowable will be assigned to the well until all interests have been consolidated (by communitization, unitization, forced-pooling, or otherwise) or until a non-standard unit, eliminating such interests, has been approved by the Commission.



CERTIFICATION

I hereby certify that the information contained herein is true and complete to the best of my knowledge and belief.

Name
Melba Knippling
Position
UNIT HEAD

Company Exxon Corporation
Box 1600 Midland, Texas

Date
9-2-83

I hereby certify that the location shown on this plat was determined from field notes of actual surveys made by me or under my supervision and that the same is true and correct to the best of my knowledge and belief.

Date Surveyed
6-13-83

Registered Professional Engineer
and/or Land Surveyor

W. A. Richmond
Certificate No.
6157

8 Miles NORTH of CARLSEAD, New Mexico

C.E. Sec. File No. A-8140

BLOWOUT PREVENTER SPECIFICATION
EQUIPMENT DESCRIPTION

TYPE II-C

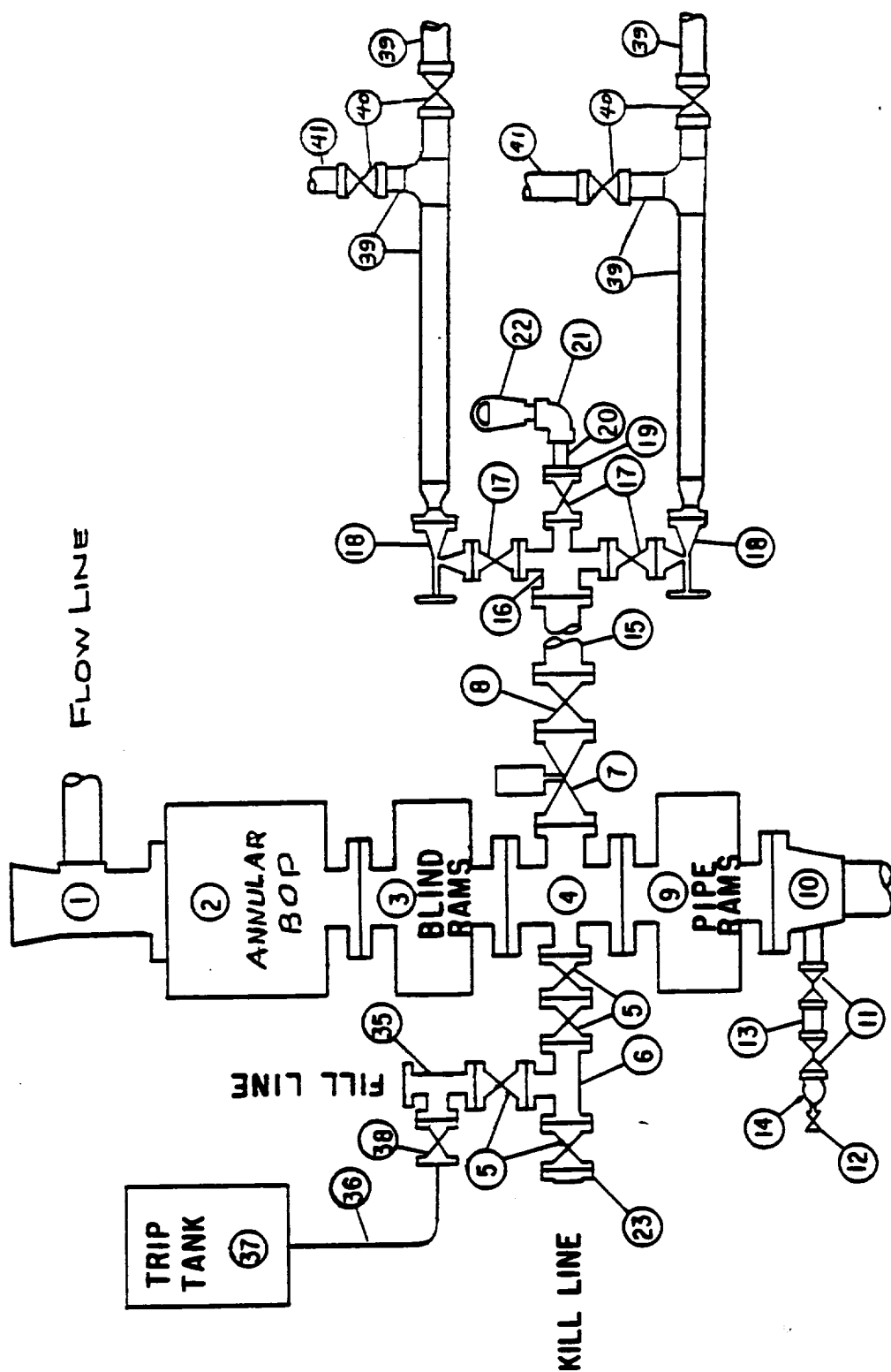
All equipment should be at least 2000 psi WP or higher unless otherwise specified.

1. Bell nipple.
2. Hydril or Shaffer bag type preventer.
3. Ram type pressure operated blowout preventer with blind rams.
4. Flanged spool with one 4-inch and one 2-inch (minimum) outlet.
5. 2-inch (minimum) flanged plug or gate valve.
6. 2-inch by 2-inch by 2-inch (minimum) flanged tee.
7. 4-inch pressure operated gate valve.
8. 4-inch flanged gate or plug valve.
9. Ram type pressure operated blowout preventer with pipe rams.
10. Flanged type casing head with one side outlet (furnished by Exxon).
11. 2-inch threaded (or flanged) plug or gate valve (furnished by Exxon).
Flanged on 5000# WP, threaded on 3000# WP or less.
12. Needle valve (furnished by Exxon).
13. 2-inch nipple (furnished by Exxon).
14. Tapped bull plug (furnished by Exxon).
15. 4-inch flanged spacer spool.
16. 4-inch by 2-inch by 2-inch by 2-inch flanged cross.
17. 2-inch flanged plug or gate valve.
18. 2-inch flanged adjustable choke.
19. 2-inch threaded flange.
20. 2-inch XXH nipple.
21. 2-inch forged steel 90° Ell.
22. Cameron (or equal.) threaded pressure gage.
23. Threaded flange.
35. 2-inch flanged tee.
36. 3-inch (minimum) hose. (Furnished by Exxon).
37. Trip tank. (Furnished by Exxon).
38. 2-inch flanged plug or gate valve.
39. 2-1/2-inch pipe, 300' to pit, anchored.
40. 2-1/2-inch SE valve.
41. 2-1/2-inch line to steel pit or separator.

NOTES:

1. Items 3, 4 and 9 may be replaced with double ram type preventer with side outlets between the rams.
2. The two valves next to the stack on the fill and kill line to be closed unless drill string is being pulled.
3. Kill line is for emergency use only. This connection shall not be used for filling.
4. Replacement pipe rams and blind rams shall be on location at all times.
5. Only type U, LWS and QRC ram type preventers with secondary seals are acceptable for 5000 psi WP and higher BOP stacks.
6. Type E ram-type BOP's with factory modified side outlets may be used on 3000 psi or lower WP BOP stacks.

MIDLAND DRILLING ORGANIZATION BLOWOUT PREVENTER SPECIFICATION TYPE II - C



9/15/73