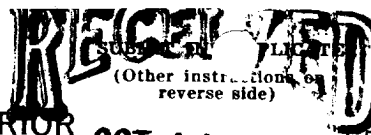


UNITED STATES
DEPARTMENT OF THE INTERIOR30-015-24664
Form approved.
Budget Bureau No. 42-R1425.

RECEIVED BY EY
NOV 02 1983
O. C. D.
ARTESIA, OFFICE

APPLICATION FOR PERMIT TO DRILL, DEEPEN, OR PLUG BACK

1a. TYPE OF WORK
DRILL ☒ DEEPEN ☐ PLUG BACK ☐

b. TYPE OF WELL
OIL WELL ☒ GAS WELL ☐ OTHER ☐ SINGLE ZONE ☒ MULTIPLE ZONE ☐

2. NAME OF OPERATOR
MONSANTO OIL COMPANY

3. ADDRESS OF OPERATOR
First City Center, Ste. 1300
500 West Texas, Midland, Texas 79701

4. LOCATION OF WELL (Report location clearly and in accordance with any State requirements.)*
At surface 1980' FNL 1980' FWL Sec. 27-20S-28E
At proposed prod. zone Same

14. DISTANCE IN MILES AND DIRECTION FROM NEAREST TOWN OR POST OFFICE*
Approximately 9 Miles Northeast of Carlsbad New Mexico

15. DISTANCE FROM PROPOSED*
LOCATION TO NEAREST
PROPERTY OR LEASE LINE, FT.
(Also to nearest drlg. unit line, if any) 660'

16. NO. OF ACRES IN LEASE
520

17. NO. OF ACRES ASSIGNED
TO THIS WELL 40

18. DISTANCE FROM PROPOSED LOCATION*
TO NEAREST WELL, DRILLING, COMPLETED,
OR APPLIED FOR, ON THIS LEASE, FT. 1320'

19. PROPOSED DEPTH
5300' Delaware

20. ROTARY OR CABLE TOOLS
Rotary

21. ELEVATIONS (Show whether DF, RT, GR, etc.)
3222' GL

22. APPROX. DATE WORK WILL START*
As soon as possible

5. LEASE DESIGNATION AND SERIAL NO.
NM 0428854

6. IF INDIAN, ALLOTTEE OR TRIBE NAME
NA

7. UNIT AGREEMENT NAME
Burton Flat Deep Unit
No. 14-08-0001-12391

8. FARM OR LEASE NAME
Burton Flat Deep Unit

9. WELL NO.
15

10. FIELD AND POOL, OR WILDCAT
Undesignated Delaware

11. SEC., T., R., M., OR BLK.
AND SURVEY OR AREA
Sec. 27-20S-28E

12. COUNTY OR PARISH
Eddy

13. STATE
NM

PROPOSED CASING AND CEMENTING PROGRAM

SIZE OF HOLE	SIZE OF CASING	WEIGHT PER FOOT	SETTING DEPTH	QUANTITY OF CEMENT
17-1/2"	13-3/8" H-40	48# ST&C	500'±	500 sx Circulated
11"	8-5/8" J-55	24# ST&C	2500'±	700 sx Circulated
7-7/8"	5-1/2" K-55	15.5# LT&C	5300'±	700 sx Sufficient to isolate all water, Oil and Gas zones.

Propose to drill to approximately 5300' to test Delaware formation. If commercial production is indicated, the well will be completed by cementing production casing, perforating and stimulating. Run 2-7/8" tubing and test well.

Postal app
SD-1 ch/Book
11-4-83

See Attached "Drilling Data" for drilling and BOP details.

IN ABOVE SPACE DESCRIBE PROPOSED PROGRAM: If proposal is to deepen or plug back, give data on present productive zone and proposed new productive zone. If proposal is to drill or deepen directionally, give pertinent data on subsurface locations and measured and true vertical depths. Give blowout preventer program, if any.

24.

SIGNED

JERRY W. LONG

TITLE

Agent

DATE

October 11, 1983

(This space for Federal or State office use)

PERMIT NO.

APPROVAL DATE

APPROVED BY

TITLE

DATE

CONDITIONS OF APPROVAL, IF ANY:

APPROVAL SUBJECT TO
GENERAL REQUIREMENTS AND
SPECIAL STIPULATIONS
ATTACHED

MEXICO OIL CONSERVATION COMMISSION
WELL LOCATION AND ACREAGE DEDICATION PLAT

Form C-102
Supersedes C-128
Effective 1-1-65

All distances must be from the outer boundaries of the Section.

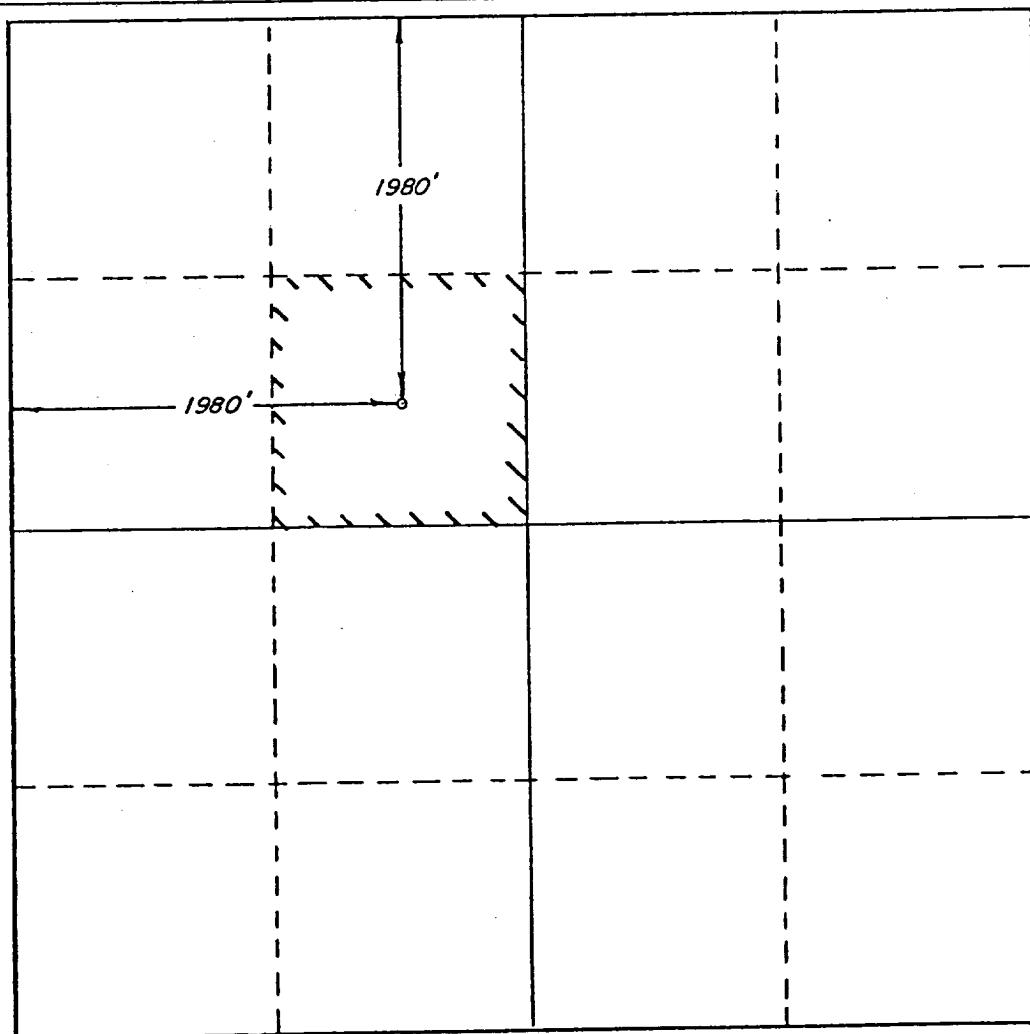
Operator MONSANTO COMPANY			Lease Burton Flat Unit		Well No. 15
Unit Letter F	Section 27	Township 20 South	Range 28 East	County Eddy	
Actual Footage Location of Well: 1980 feet from the North line and 1980 feet from the West line					
Ground Level Elev. 3222	Producing Formation Delaware		Pool Undesignated - Delaware		Dedicated Acreage: 40 Acres

1. Outline the acreage dedicated to the subject well by colored pencil or hachure marks on the plat below.
2. If more than one lease is dedicated to the well, outline each and identify the ownership thereof (both as to working interest and royalty).
3. If more than one lease of different ownership is dedicated to the well, have the interests of all owners been consolidated by communitization, unitization, force-pooling, etc?

☒ Yes ☐ No If answer is "yes," type of consolidation Unitization

If answer is "no," list the owners and tract descriptions which have actually been consolidated. (Use reverse side of this form if necessary.)

No allowable will be assigned to the well until all interests have been consolidated (by communitization, unitization, forced-pooling, or otherwise) or until a non-standard unit, eliminating such interests, has been approved by the Commission.



CERTIFICATION

I hereby certify that the information contained herein is true and complete to the best of my knowledge and belief.

Jerry W. Long
Name
JERRY W. LONG

Position
Agent

Company
MONSANTO OIL COMPANY

Date
October 11, 1983

I hereby certify that the well location shown on this plat was plotted from field notes of actual surveys made by me or under my supervision, and that the same is true and correct to the best of my knowledge and belief.

SEPT 19 1983

Date Surveyed
Richard B. Duniven

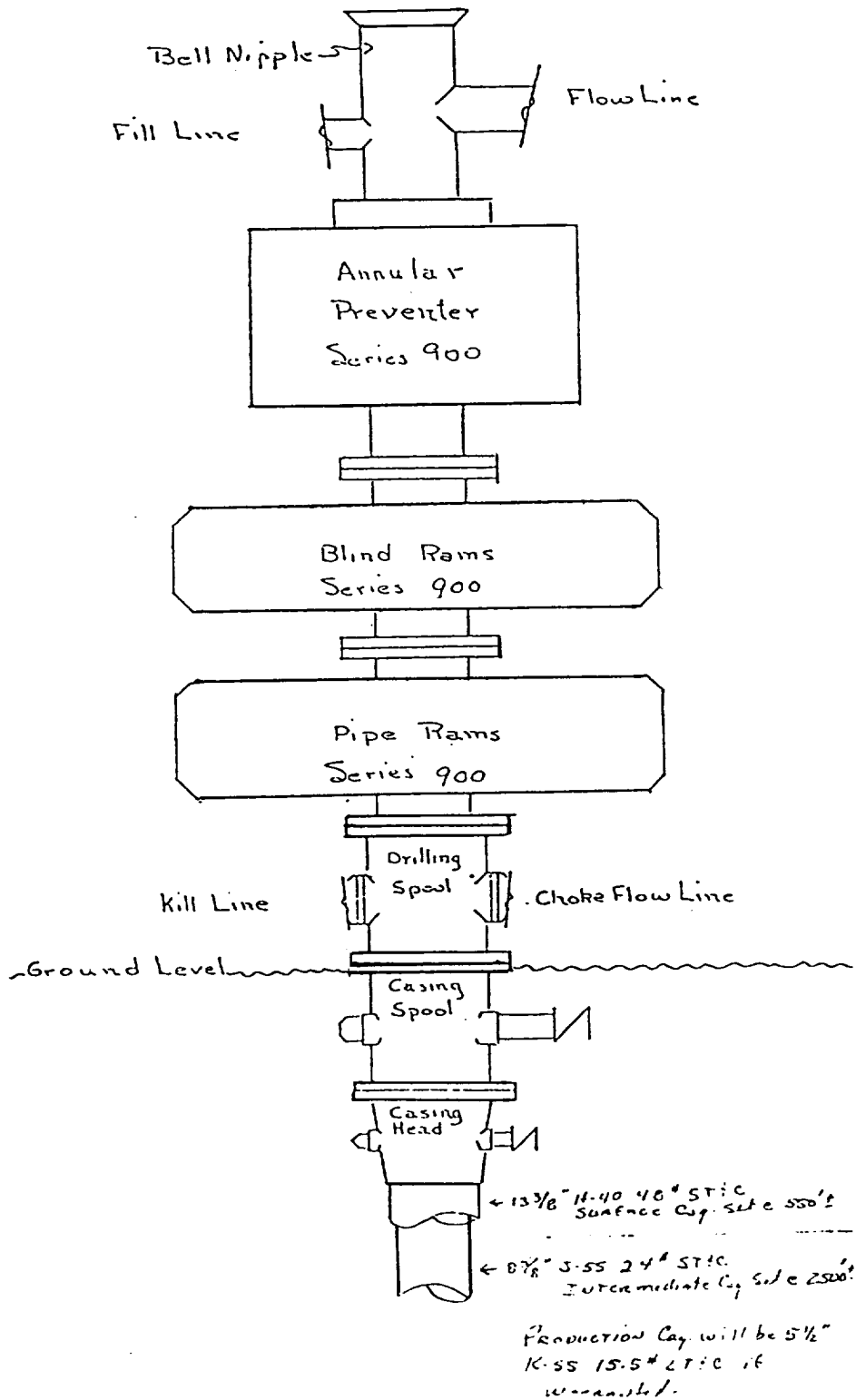
Registered Professional Engineer
and/or Land Surveyor

Richard B. Duniven
Certificate No. **4882**

0 330 660 990 1320 1650 1980 2310 2640 2000 1500 1000 500 0

MONSANTO OIL COMPANY
 No.15 Burton Flat Deep Unit
 SE $\frac{1}{4}$ NW $\frac{1}{4}$ Sec.27-20S-28E
 Eddy County, N.M.

THE BLOWOUT PREVENTER STACK
 3000 psi Working Pressure



SUPPLEMENTAL DRILLING DATA

MONSANTO OIL COMPANY
No.15 Burton Flat Deep Unit
1980'FNL 1980'FWL Sec.27-20S-28E
Eddy County, N.M.

NM 0428854

The following items supplement Form 9-331C in accordance with instructions contained in NTL-6.

1. SURFACE FORMATION: Recent (Aeolian)

2. ESTIMATED TOPS OF GEOLOGIC MARKERS:

Rustler	100'
Yates	1150'
Delaware	2800'
Bone Spring	5300'

3. ESTIMATED DEPTHS TO WATER, OIL OR GAS FORMATIONS:

Fresh Water - Surface to about 200'
Oil and Gas - 2800' to Total Depth of 5300'±

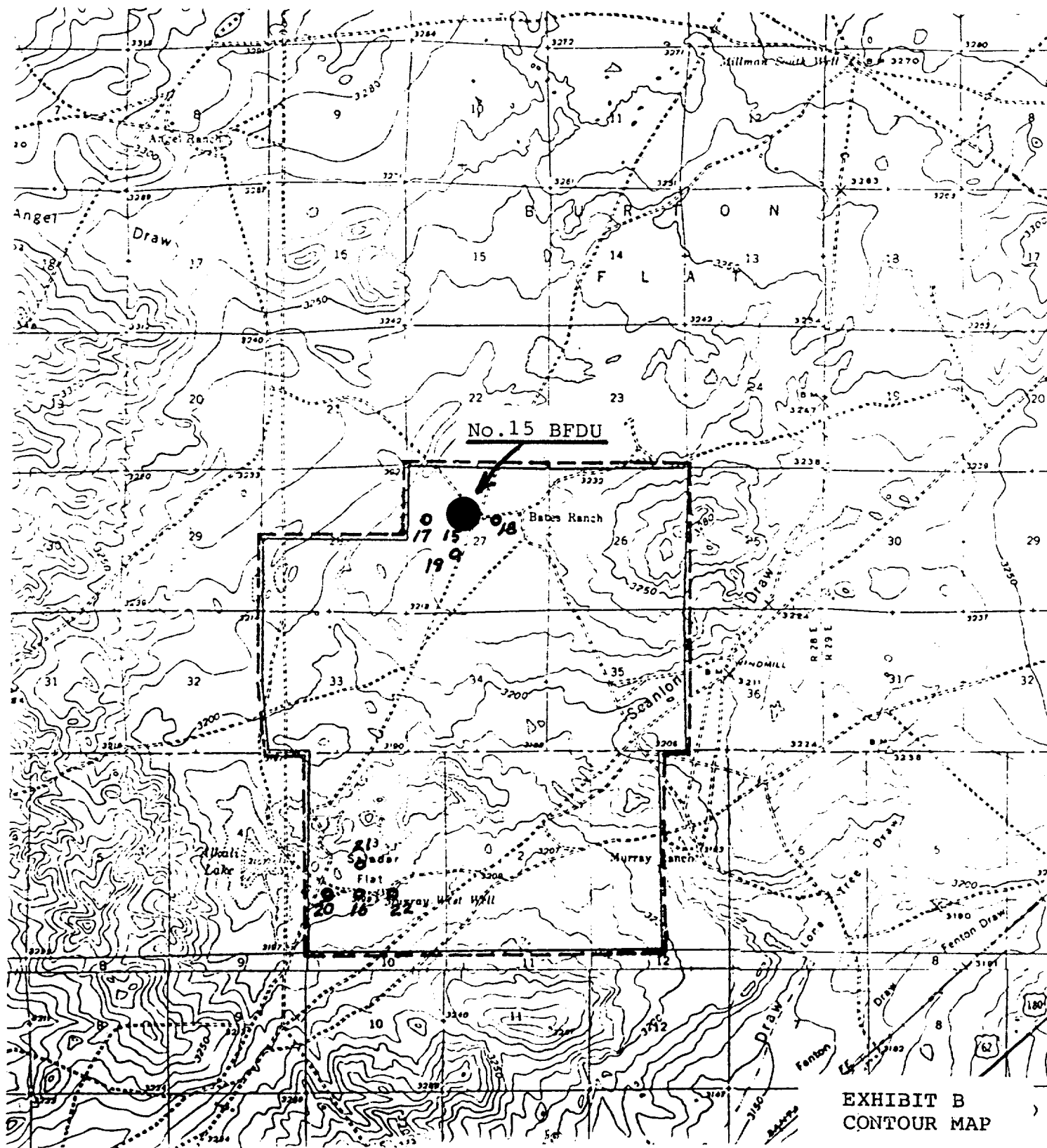
4. PROPOSED CASING PROGRAM:

13-3/8" Casing - H-40, 48# ST&C casing will be set to 500'± with cement circulated.
8-5/8" Casing - J-55, 24# ST&C casing will be set to 2500'± with cement circulated.
5-1/2" Casing - K-55, 15.5# LT&C casing will be set thru the producing zone and cemented to isolate all oil, gas and water zones.

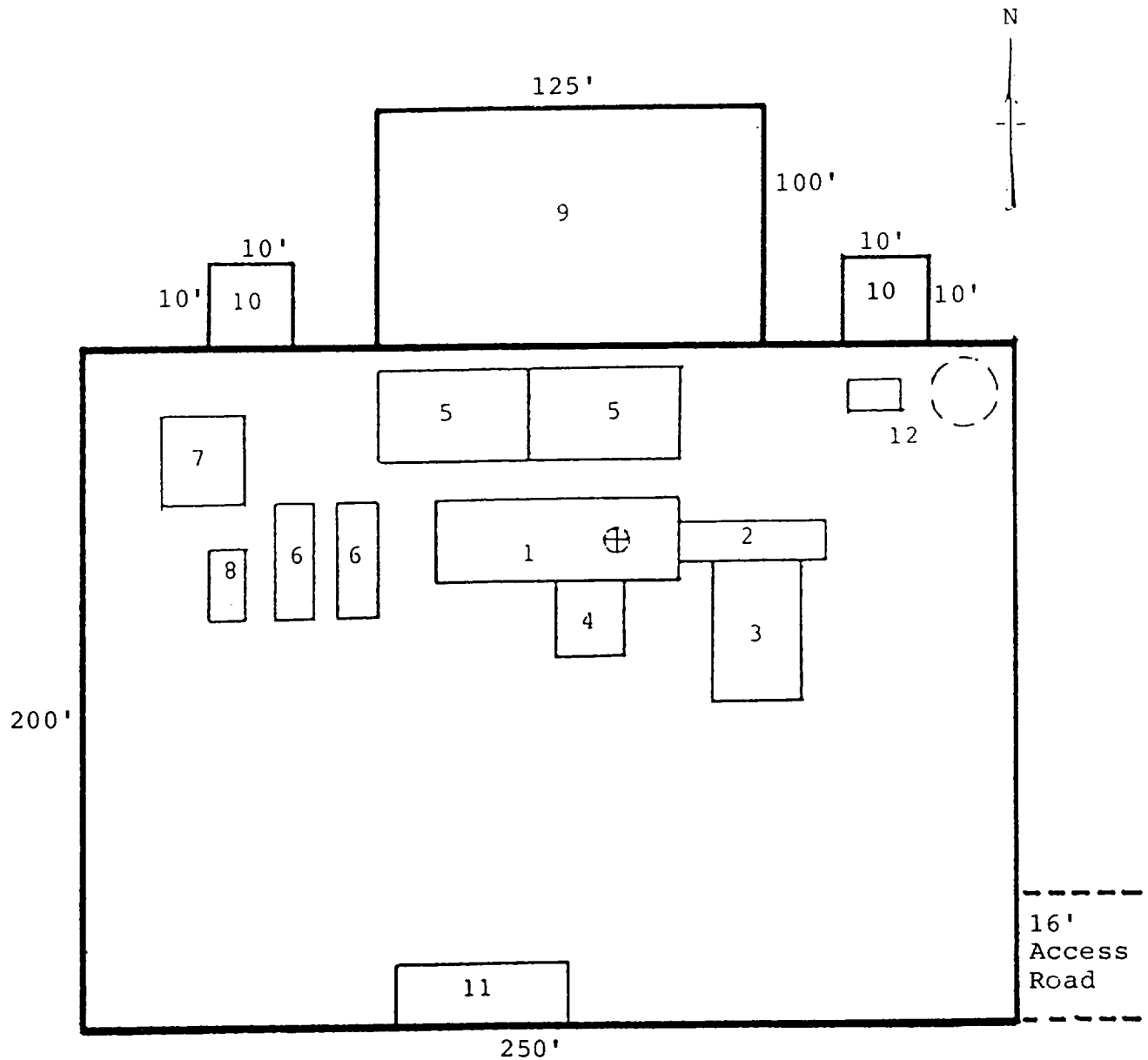
The intermediate and production casing strings will be tested to 1000 psi.

5. PRESSURE CONTROL EQUIPMENT: Pressure control equipment will include a 3000#WP blowout preventer stack with Series 900 annular preventer and Series 900 blind and pipe rams. The BOP stack will include a kill line and a choke manifold tested to 2000 psi. BOP hydraulic controls will be operated at least daily.

MONSANTO OIL COMPANY
No.15 Burton Flat Deep Unit
SE $\frac{1}{4}$ NW $\frac{1}{4}$ Sec.27-20S-28E
Eddy County, N.M.



MONSANTO OIL COMPANY
 No.15 Burton Flat Deep Unit
 SE¼NW¼ Sec.27-20S-28E
 Eddy County, N.M.



RIG LAYOUT

- | | |
|-----------------|---------------------------|
| 1. Substructure | 7. Water Tank |
| 2. Catwalk | 8. Light Plant |
| 3. Pipe Rack | 9. Reserve Pit |
| 4. Doghouse | 10. Trash Pit |
| 5. Mud Pits | 11. Trailer House |
| 6. Mud Pumps | 12. Production Facilities |