

UNIT STATES
DEPARTMENT OF THE INTERIOR
BUREAU OF LAND MANAGEMENT

FORM APPROVED
Budget Bureau No. 1004-0135
Expires: March 31, 1993

SUNDRY NOTICES AND REPORTS ON WELLS

Do not use this form for proposals to drill or to deepen or reenter a different reservoir.
Use "APPLICATION FOR PERMIT -" for such proposals

5. Lease Designation and Serial No.
NMNM0428854

6. If Indian, Allottee or Tribe Name

7. If Unit or CA, Agreement Designation

SUBMIT IN TRIPLICATE

1. Type of Well

☒ Oil Well ☐ Gas Well ☐ Other

type other description or delete

8. Well Name and No.

Burton Flat Deep Unit #15

2. Name of Operator

Ocean Energy Inc.

9. API Well No.

30-015-24664

3. Address and Telephone No.

1001 Fannin, Suite 1600, Houston, TX 77002 (713) 265-6834

10. Field and Pool, or Exploratory Area

Burton Flat Deep

4. Location of Well (Footage, Sec., T., R., M., or Survey Description)

T20S, R28E, NMP, S27, SE NW

11. County or Parish, State

Eddy Co., NM

12. CHECK APPROPRIATE BOX(es) TO INDICATE NATURE OF NOTICE, REPORT, OR OTHER DATA

TYPE OF SUBMISSION

☐ Notice of Intent
☒ Subsequent Report
☐ Final Abandonment Notice

TYPE OF ACTION

☐ Abandonment
☐ Recompletion
☐ Plugging Back
☐ Casing Repair
☐ Altering Casing
☒ Other Temp. Abandon
☐ Change of Plans
☐ New Construction
☐ Non-Routine Fracturing
☐ Water Shut-Off
☐ Conversion to Injection
☐ Dispose Water

(Note: Report results of multiple completion on Well
Completion or Recompletion Report and Log form.)

13. Describe Proposed or Completed Operations (Clearly state all pertinent details, and give pertinent dates, including estimated date of starting any proposed work. If well is directionally drilled, give subsurface locations and measured and true vertical depths for all markers and zones pertinent to this work.)*

Well was temporarily abandoned by setting CIBP @ 4950' w/35' of cmt on top.
Attached is the MIT that was ran after setting the plug.

John
2002

Accepted for record - NMOCD

14. I hereby certify that the foregoing is true and correct

Signed *Jeannie McMillan*

Title Regulatory Specialist

Date 02/13/02

(This space for Federal or State office use)

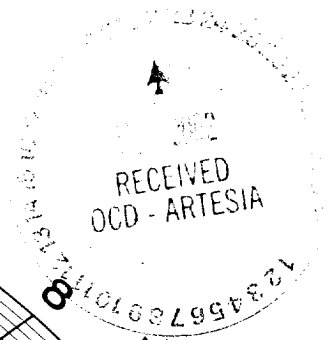
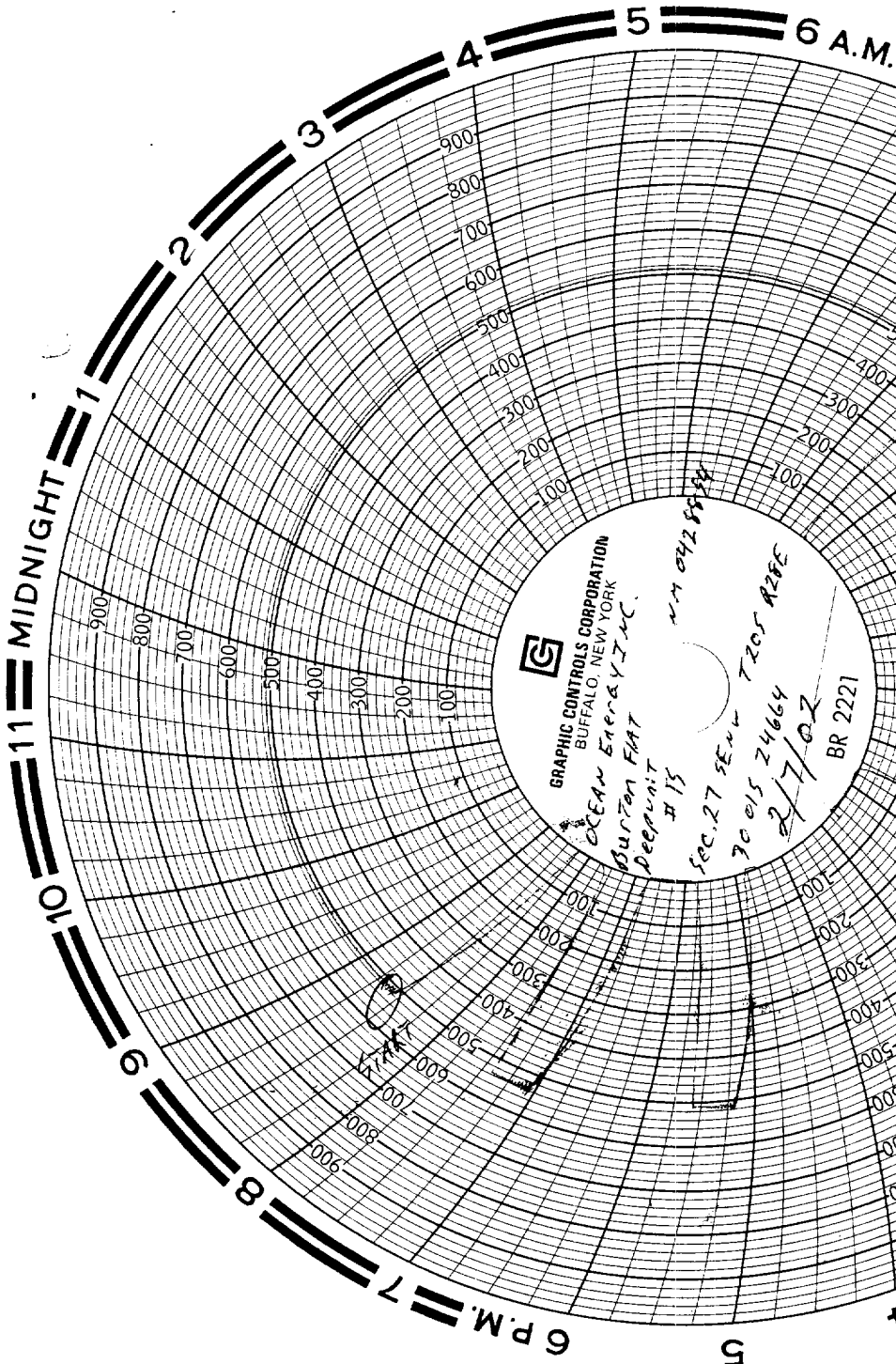
Approved by

Title

Date

Conditions of approval, if any:

RECEIVED
2002 FEB 14 AM 10:48
BUREAU OF LAND MGMT.
ROSWELL OFFICE



Handwritten notes:
P. A. 2nd block
P. A. 1st block
P. A. 3rd block
P. A. 4th block
P. A. 5th block
P. A. 6th block
P. A. 7th block
P. A. 8th block
P. A. 9th block
P. A. 10th block
P. A. 11th block
P. A. 12th block
P. A. 13th block
P. A. 14th block
P. A. 15th block
P. A. 16th block
P. A. 17th block
P. A. 18th block
P. A. 19th block
P. A. 20th block
P. A. 21st block
P. A. 22nd block
P. A. 23rd block
P. A. 24th block
P. A. 25th block
P. A. 26th block
P. A. 27th block
P. A. 28th block
P. A. 29th block
P. A. 30th block
P. A. 31st block
P. A. 32nd block
P. A. 33rd block
P. A. 34th block
P. A. 35th block
P. A. 36th block
P. A. 37th block
P. A. 38th block
P. A. 39th block
P. A. 40th block
P. A. 41st block
P. A. 42nd block
P. A. 43rd block
P. A. 44th block
P. A. 45th block
P. A. 46th block
P. A. 47th block
P. A. 48th block
P. A. 49th block
P. A. 50th block
P. A. 51st block
P. A. 52nd block
P. A. 53rd block
P. A. 54th block
P. A. 55th block
P. A. 56th block
P. A. 57th block
P. A. 58th block
P. A. 59th block
P. A. 60th block
P. A. 61st block
P. A. 62nd block
P. A. 63rd block
P. A. 64th block
P. A. 65th block
P. A. 66th block
P. A. 67th block
P. A. 68th block
P. A. 69th block
P. A. 70th block
P. A. 71st block
P. A. 72nd block
P. A. 73rd block
P. A. 74th block
P. A. 75th block
P. A. 76th block
P. A. 77th block
P. A. 78th block
P. A. 79th block
P. A. 80th block
P. A. 81st block
P. A. 82nd block
P. A. 83rd block
P. A. 84th block
P. A. 85th block
P. A. 86th block
P. A. 87th block
P. A. 88th block
P. A. 89th block
P. A. 90th block
P. A. 91st block
P. A. 92nd block
P. A. 93rd block
P. A. 94th block
P. A. 95th block
P. A. 96th block
P. A. 97th block
P. A. 98th block
P. A. 99th block
P. A. 100th block

RECEIVED
2002 FEB 14 AM 10:48
BUREAU OF LAND MGMT.
ROSWELL OFFICE