

NM OIL CONS. COMMISSION
 Drawer
 Artesia, NM 88210
UNITED STATES
DEPARTMENT OF THE INTERIOR
 GEOLOGICAL SURVEY

SUBMIT IN **PLICATE**
 (Other instructions on reverse side)

30-015-24695
 Form approved.
 Budget Bureau No. 42-R1425.

0187

APPLICATION FOR PERMIT TO DRILL, DEEPEN, OR PLUG BACK

1a. TYPE OF WORK
 DRILL DEEPEN PLUG BACK

b. TYPE OF WELL
 OIL WELL GAS WELL OTHER
 SINGLE ZONE MULTIPLE ZONE

2. NAME OF OPERATOR
 Exxon Corporation ✓

3. ADDRESS OF OPERATOR
 P.O. Box 1600; Midland, Texas 79702

4. LOCATION OF WELL (Report location clearly and in accordance with any State requirements.)*
 At surface
 660' FSL & 1980' FEL of Section
 At proposed prod. zone

RECEIVED BY
 NOV 28 1983
 O. C. D.
 ARTESIA, OFFICE

14. DISTANCE IN MILES AND DIRECTION FROM NEAREST TOWN OR POST OFFICE*
 8.8 miles NE from Carlsbad

15. DISTANCE FROM PROPOSED* LOCATION TO NEAREST PROPERTY OR LEASE LINE, FT.
 660' lse. line
 (Also to nearest drlg. unit line, if any) 660' drlg. line

18. DISTANCE FROM PROPOSED LOCATION* TO NEAREST WELL, DRILLING, COMPLETED, OR APPLIED FOR, ON THIS LEASE, FT.
 2700' N to #2

21. ELEVATIONS (Show whether DF, RT, GR, etc.)
 3203' GR

23. PROPOSED CASING AND CEMENTING PROGRAM

SIZE OF HOLE	SIZE OF CASING	WEIGHT PER FOOT	SETTING DEPTH	QUANTITY OF CEMENT
26"	20"	94#	40'	25 sx Redimix-TOC Surface
17 1/2"	13 3/8"	48#	600'	350 sx-TOC Surface
11"	8 5/8"	24#	2500' 2800'	600 sx-TOC Surface
7 7/8"	5 1/2"	14, 15.5#	6100'	700 sx-TOC-Tie into int. csg.

5. LEASE DESIGNATION AND SERIAL NO.
 NM-55124
 6. IF INDIAN, ALLOTTEE OR TRIBE NAME

 7. UNIT AGREEMENT NAME

 8. FARM OR LEASE NAME
 Burton Flat "C" Federal
 9. WELL NO.
 3
 10. FIELD AND POOL, OR WILDCAT
 Undesig. Avalon
 11. SEC., T., R., M., OR BLK. AND SURVEY OR AREA
 Sec. 35-20S-28E
 12. COUNTY OR PARISH
 Eddy
 13. STATE
 New Mexico
 16. NO. OF ACRES IN LEASE
 240
 17. NO. OF ACRES ASSIGNED TO THIS WELL
 40
 20. ROTARY OR CABLE TOOLS
 Rotary
 22. APPROX. DATE WORK WILL START*
 11-83



Posted a.k.
 JD-10 of Book
 12-6-83

IN ABOVE SPACE DESCRIBE PROPOSED PROGRAM: If proposal is to deepen or plug back, give data on present productive zone and proposed new productive zone. If proposal is to drill or deepen directionally, give pertinent data on subsurface locations and measured and true vertical depths. Give blowout preventer program, if any.

24. SIGNED Melba Kripling TITLE Unit Head DATE 11-1-83

PERMIT NO. _____ APPROVAL DATE NOV 25 1983

ORIG. SIGNED JAMES A. GILLHAM
 APPROVED BY _____ TITLE ACTING DM - ROSWELL DATE NOV 25 1983

CONDITIONS OF APPROVAL, IF ANY:

APPROVAL SUBJECT TO
 GENERAL REQUIREMENTS AND
 SPECIAL STIPULATIONS

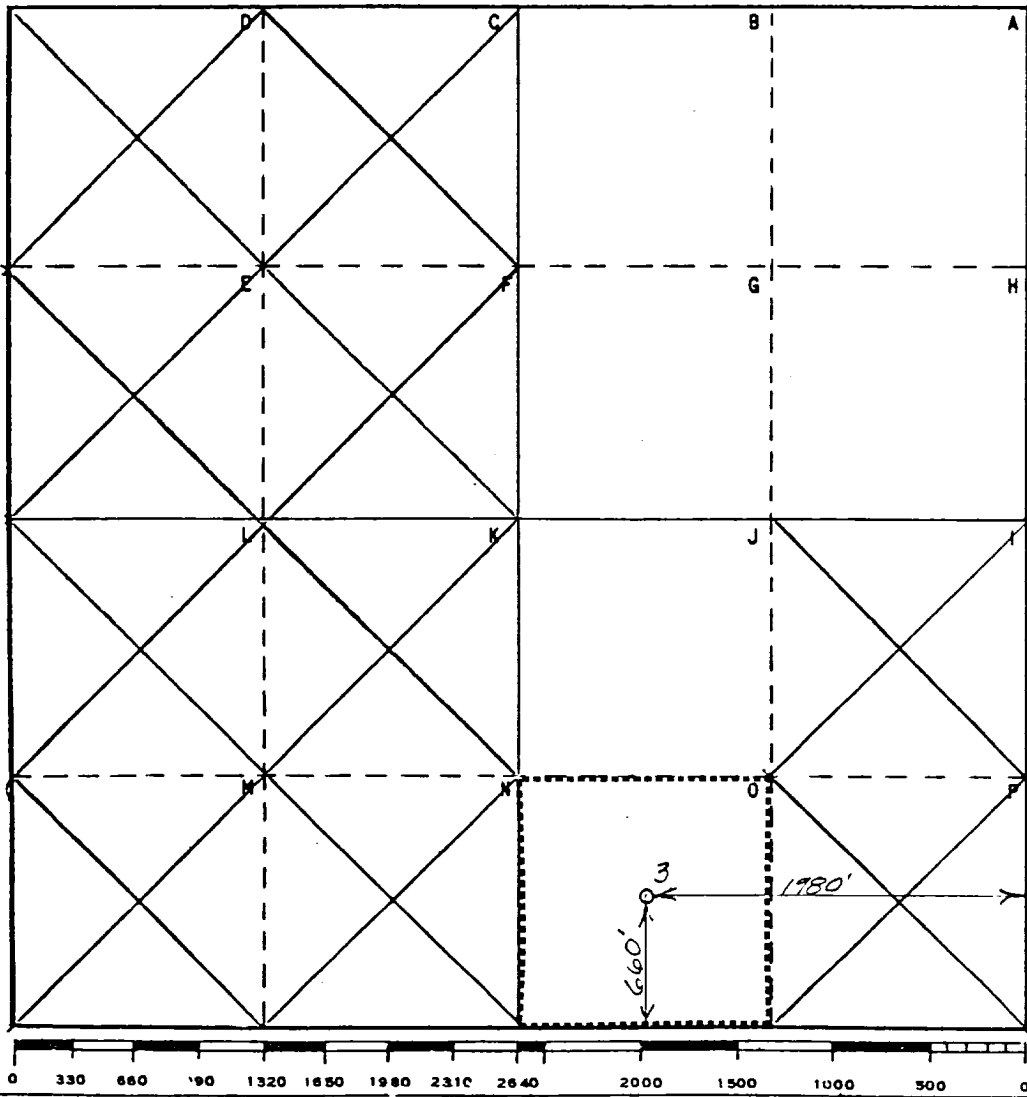
Operator Exxon Corporation		Lease BURTON FLAT "C" FEDERAL			Well No. 3
Unit Letter 0	Section 35	Township 20 S	Range 28 E	County EDDY	
Actual Footage Location of Well: 660 feet from the SOUTH line and 1980 feet from the EAST line					
Ground Level Elev. 3203	Producing Formation BONE SPRING		Pool UNDESIG. AVALON		Dedicated Acreage: 40 Acres

1. Outline the acreage dedicated to the subject well by colored pencil or hachure marks on the plat below.
2. If more than one lease is dedicated to the well, outline each and identify the ownership thereof (both as to working interest and royalty).
3. If more than one lease of different ownership is dedicated to the well, have the interests of all owners been consolidated by communitization, unitization, force-pooling, etc?

Yes No If answer is "yes," type of consolidation _____

If answer is "no," list the owners and tract descriptions which have actually been consolidated. (Use reverse side of this form if necessary.) _____

No allowable will be assigned to the well until all interests have been consolidated (by communitization, unitization, forced-pooling, or otherwise) or until a non-standard unit, eliminating such interests, has been approved by the Commission.



CERTIFICATION

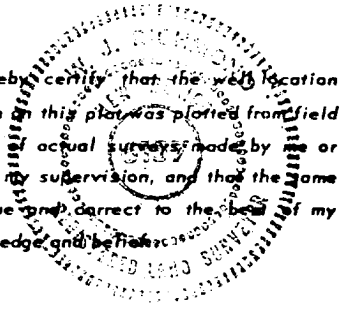
I hereby certify that the information contained herein is true and complete to the best of my knowledge and belief.

Name
Melba Knippling
Position
UNIT HEAD

Company Exxon Corporation
Box 1600 Midland, Texas

Date
10-28-83

I hereby certify that the well location shown on this plat was plotted from field notes of actual surveys made by me or under my supervision, and that the same is true and correct to the best of my knowledge and belief.



Date Surveyed
10-21-83

Registered Professional Engineer and/or Land Surveyor
W J Richmond
Certificate No.

6157

All distances must be from the outer boundaries of the Section.

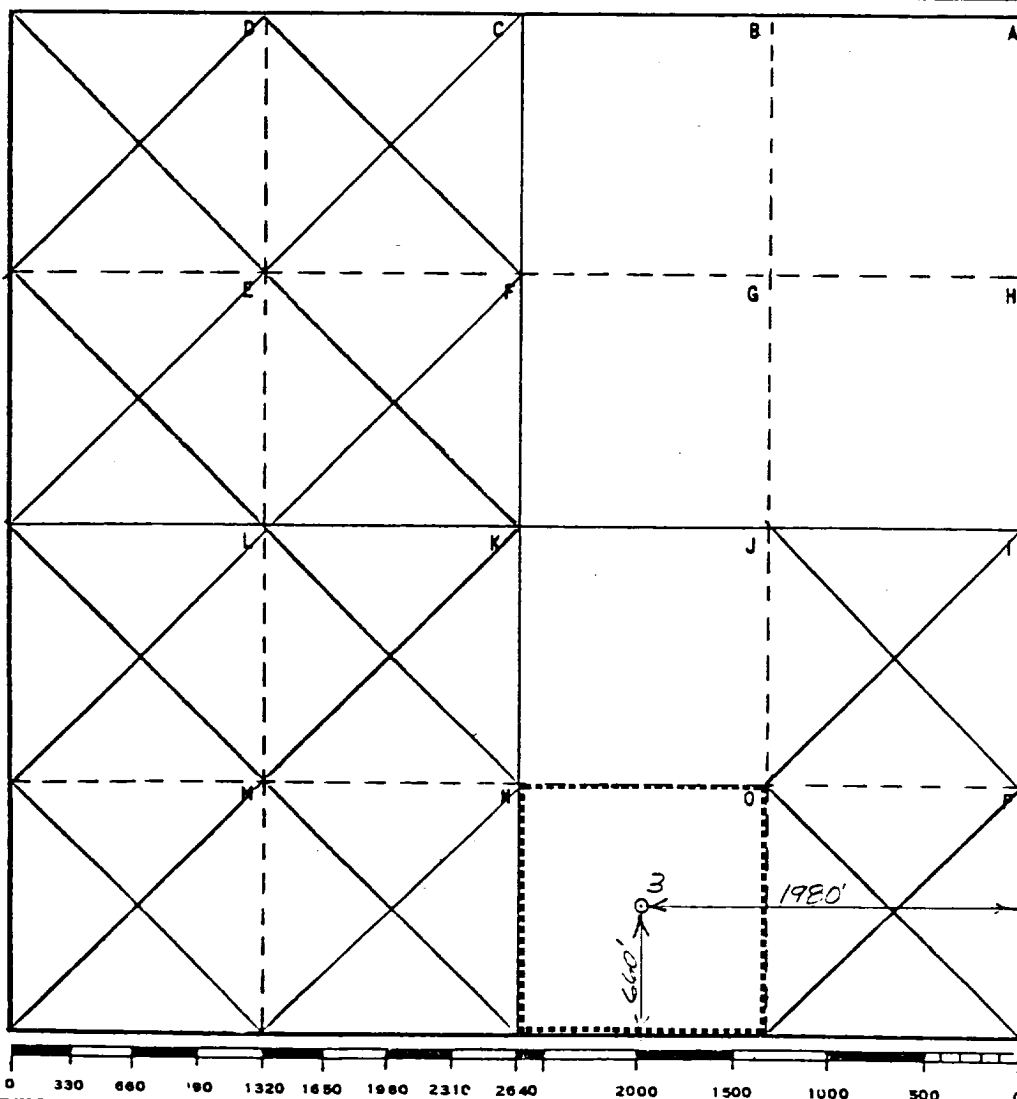
Operator Exxon Corporation		Lease BURTON FLAT "C" FEDERAL		Well No. 3
Unit Letter 0	Section 35	Township 20S	Range 28E	County Eddy
Actual Footage Location of Well: 660 feet from the SOUTH line and 1980 feet from the EAST line				
Ground Level Elev: 3203	Producing Formation DELAWARE	Pool UNDESIG. AVALON	Dedicated Acreage: 40 Acres	

1. Outline the acreage dedicated to the subject well by colored pencil or hachure marks on the plat below.
2. If more than one lease is dedicated to the well, outline each and identify the ownership thereof (both as to working interest and royalty).
3. If more than one lease of different ownership is dedicated to the well, have the interests of all owners been consolidated by communitization, unitization, force-pooling, etc?

Yes No If answer is "yes," type of consolidation _____

If answer is "no," list the owners and tract descriptions which have actually been consolidated. (Use reverse side of this form if necessary.) _____

No allowable will be assigned to the well until all interests have been consolidated (by communitization, unitization, forced-pooling, or otherwise) or until a non-standard unit, eliminating such interests, has been approved by the Commission.



CERTIFICATION

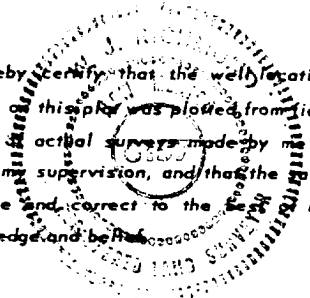
I hereby certify that the information contained herein is true and complete to the best of my knowledge and belief.

Name
Melba Knippling
Position
UNIT HEAD

Company **Exxon Corporation**
Box 1600 Midland, Texas

Date
10-28-83

I hereby certify that the well location shown on this plat was plotted from field notes actual surveys made by me or under my supervision, and that the same is true and correct to the best of my knowledge and belief.



Date Surveyed
10-21-83

Registered Professional Engineer and/or Land Surveyor

W. J. Richmond
Certificate No.
6157

10 POINT PLAN
 BURTON FLAT FEDERAL C-3
 Section 35, 20S, 28E
 Eddy County, New Mexico
 October 19, 1983

1. The geologic name of the surface formation: Recent

2. The estimated tops of important geologic markers:

Delaware Mt. Grp. : 2500'
 Bone Spring : 5000'

3. The estimated depths at which anticipated water, oil, gas, or other mineral bearing formations are expected to occur:

Deepest FW : 500'
 Oil
 Bone Spring : 5000'

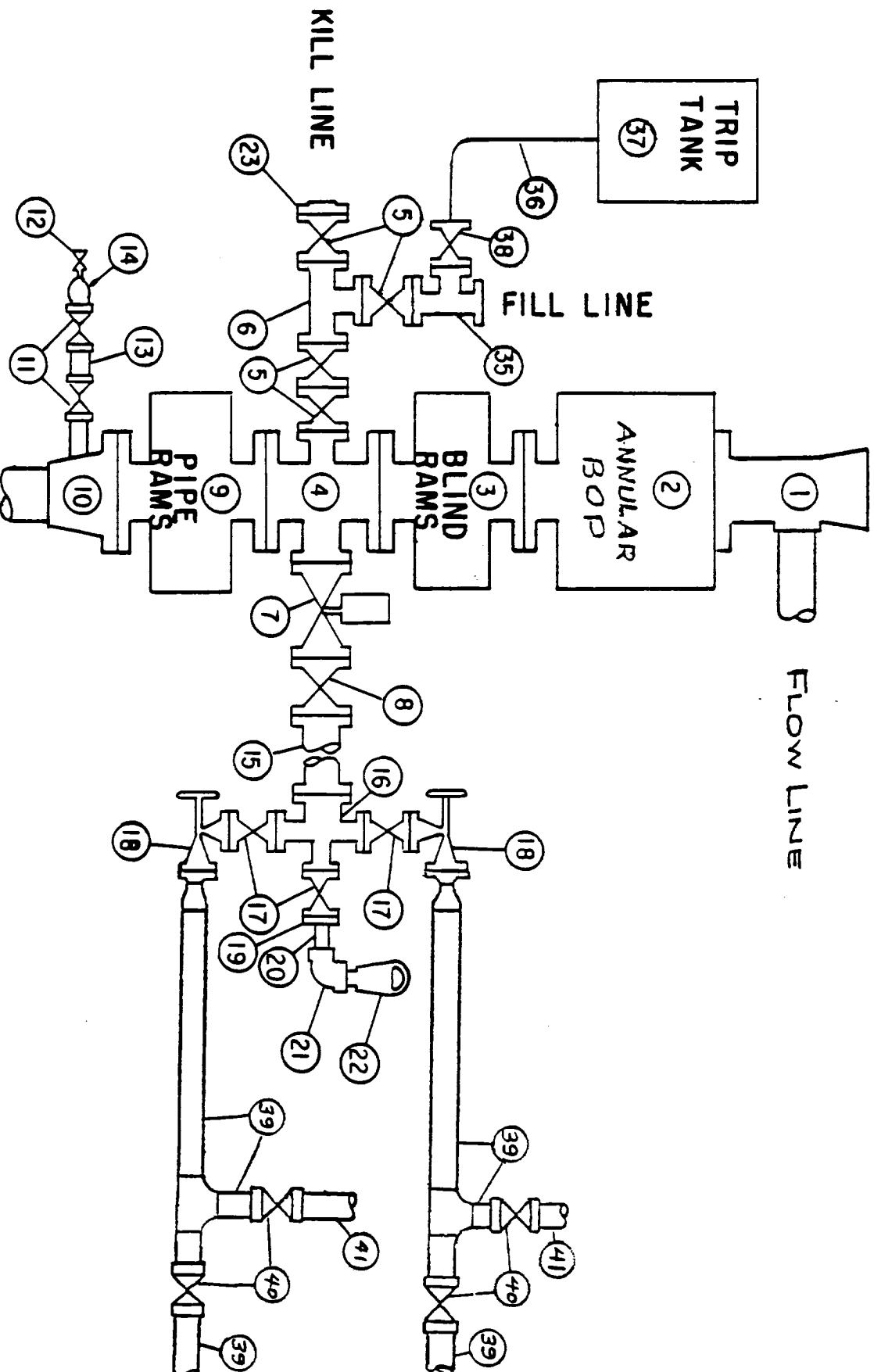
4. Proposed casing program:

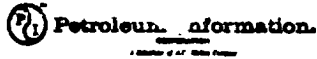
<u>STRING</u>	<u>SIZE</u>	<u>WEIGHT/GRADE</u>	<u>CONDITION</u>	<u>DEPTH INTERVAL</u>
Conductor	20"	94#/H-40	New	0- 40'
Surface	13-3/8"	48#/K-55	New	0- 600'
Intermediate	8-5/8"	24#/K-55	New	0-2800'
Production	5-1/2"	14#&15.5#	/K-55 New	0-6100'

5. Minimum specifications for pressure control equipment:

- A. Wellhead equipment - Threaded type, 2000 psi WP for 13-3/8" x 8-5/8" x 5-1/2" casing program with 2-7/8" tubing hanger.
- B. Blowout preventers - Refer to attached drawings and lists of equipment titled "Type II-C" for description of BOP stacks and choke manifold.
- C. BOP control unit - Unit will be hydraulically operated and have at least two control stations.
- D. Testing - Upon installation, the Type II-C BOP's for the 13-3/8" surface casing and the 8-5/8" intermediate casing will be tested to a low pressure (200-300 psi) and to a high pressure of 2000 psi. Casing rams will be body tested in a like manner. An operational test of the blowout preventers will be performed on each round trip, (but not more than once each day); the annular and pipe rams preventers will be closed on drill pipe and the blind rams will be closed while pipe is out of the hole.

MIDLAND DRILLING ORGANIZATION
 BLOWOUT PREVENTER SPECIFICATION
 TYPE II - C





RE-ISSUED COMPLETION

© Copyrighted Reproduction Prohibited

COUNTY EDDY FIELD Avalon STATE NM
 OPR EXXON CORP API 30-015-24695
 NO 3 LEASE Burton Flat "C" Federal MAP
Sec 35, T20S, R28E CO-ORD
660 FSL, 1980 FEL of Sec 7-2-9 NM
8 mi NE/Carlsbad SPD 2-15-84 CMP 5-26-84

CSC	WELL CLASS: INIT D FIN DO LSE. CODE			
	FORMATION	DATUM	FORMATION	DATUM
13 3/8-605-700 sx				
8 5/8-2569-1260 sx				
5 1/2-2730-1100 sx				
2 7/8-2215				
	TD 5740 (BSPG)		PBD 5205	

IP (Delaware) Perfs 3222-3227 P 18 BOPD + 411 BW. Pot based on 24 hr test. GOR 276; gty 41.4

CONTR _____ OPRSELEV 3203 GR SUBS _____

F.R. 11-14-83
 PD 6100 RT (Delaware)
 7-14-84 AMEND FIELD & ZONE: Formerly Undesignated (Bone Spring)
 7-9-84 TD 5740; PBD 5205; Complete
 Cored (Bone Spring) 5520-5580, rec 60 FT, no desc
 SDWL Cores (NR)
 No DST's
 Perf (Bone Spring) 5258-5264 w/2 SPF
 Acid (5258-5264) 1000 gals (15% HCL)
 Frac (5258-5264) 29,300 gals foam + 39,000# sd
 *Ppd 8 BO + 228 BW in 24 hrs (5258-5264)
 CIBP @ 5205

7-2-9 NM