

30-015-24696

UNITED STATES
DEPARTMENT OF THE INTERIOR
GEOLOGICAL SURVEY

APPLICATION FOR PERMIT TO DRILL, DEEPEN, OR PLUG BACK

1a. TYPE OF WORK

DRILL ☒

DEEPEN ☐

PLUG BACK ☐

b. TYPE OF WELL

OIL WELL ☒

GAS WELL ☐

OTHER

SINGLE ZONE ☒

MULTIPLE ZONE ☐

2. NAME OF OPERATOR

Exxon Corporation

3. ADDRESS OF OPERATOR

P.O. Box 1600; Midland, Texas 79702

4. LOCATION OF WELL (Report location clearly and in accordance with any State requirements.)*

At surface

563' FNL & 560' FEL of Section

At proposed prod. zone

(irregular section)

14. DISTANCE IN MILES AND DIRECTION FROM NEAREST TOWN OR POST OFFICE*

8 miles North from Carlsbad

15. DISTANCE FROM PROPOSED* 563' lse. line

LOCATION TO NEAREST PROPERTY OR LEASE LINE, FT.

(Also to nearest drlg. unit line, if any) 410' drlg. line

16. NO. OF ACRES IN LEASE

2,261.75

17. NO. OF ACRES ASSIGNED TO THIS WELL

29.85

18. DISTANCE FROM PROPOSED LOCATION* TO NEAREST WELL, DRILLING, COMPLETED, OR APPLIED FOR, ON THIS LEASE, FT.

±1980' E to #35

19. PROPOSED DEPTH

3400'

20. ROTARY OR CABLE TOOLS

Rotary

21. ELEVATIONS (Show whether DF, RT, GR, etc.)

3207' GR

22. APPROX. DATE WORK WILL START*

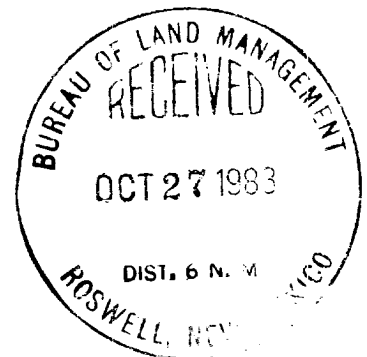
11-83

23.

PROPOSED CASING AND CEMENTING PROGRAM

SIZE OF HOLE	SIZE OF CASING	WEIGHT PER FOOT	SETTING DEPTH	QUANTITY OF CEMENT
26"	20"	94#	40'	25 sx Redimix TOC-surface
17 1/2"	13 3/8"	48#	600'	350 sx TOC-surface
11"	8 5/8"	24#	2500'	500 sx TOC-surface
7 7/8"	5 1/2"	14#	3400'	500 sx TOC-Tie into surface csg.

Revised 2/29
SD to 7' BWH
12-2-83



IN ABOVE SPACE DESCRIBE PROPOSED PROGRAM: If proposal is to deepen or plug back, give data on present productive zone and proposed new productive zone. If proposal is to drill or deepen directionally, give pertinent data on subsurface locations and measured and true vertical depths. Give blowout preventer program, if any.

24.

SIGNED

Inelva Kripling

TITLE

Unit Head

DATE

10-24-83

(This space for Federal or State office use)

PERMIT NO.

APPROVAL DATE

APPROVED BY

CONDITIONS OF APPROVAL, IF ANY:

TITLE

APPROVAL SUBJECT TO
GENERAL REQUIREMENTS AND
SPECIAL STIPULATIONS
ATTACHED

DATE

10-24-83

Federal Lse.No. _____

All distances must be from the outer boundaries of the Section.

Operator Exxon Corporation		Lease YATES "C" FEDERAL		Well No. 35
Unit Letter 1	Section 5	Township 21S	Range 27E	County EDDY
Actual Footage Location of Well: 560 feet from the EAST line and 6945' feet from the SOUTH line				
Ground Level Elev. 3207	Producing Formation DELAWARE	Pool UNDESIG. DELAWARE AVALON	Dedicated Acreage: 29.85 Acres	

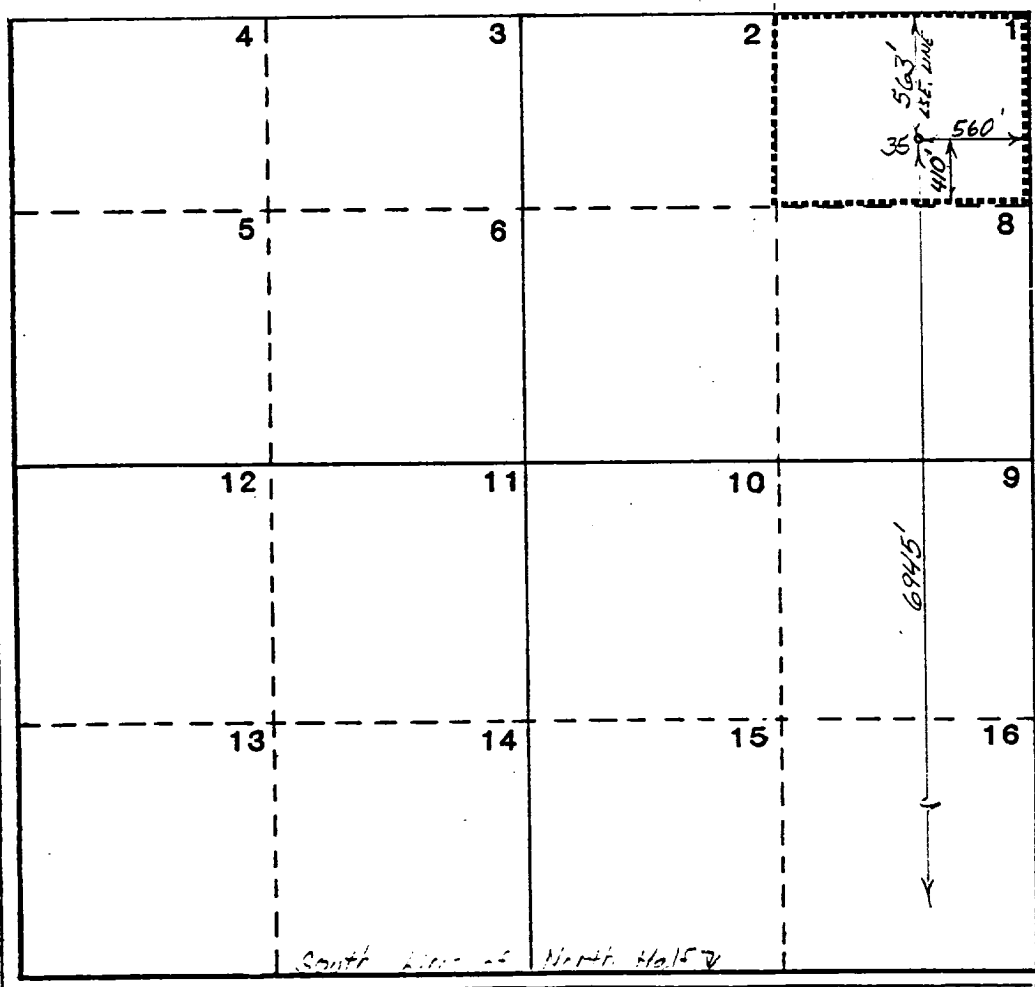
1. Outline the acreage dedicated to the subject well by colored pencil or hachure marks on the plat below.
2. If more than one lease is dedicated to the well, outline each and identify the ownership thereof (both as to working interest and royalty).
3. If more than one lease of different ownership is dedicated to the well, have the interests of all owners been consolidated by communitization, unitization, force-pooling, etc?

☐ Yes ☐ No

If answer is "yes," type of consolidation _____

If answer is "no," list the owners and tract descriptions which have actually been consolidated. (Use reverse side of this form if necessary.) _____

No allowable will be assigned to the well until all interests have been consolidated (by communitization, unitization, forced-pooling, or otherwise) or until a non-standard unit, eliminating such interests, has been approved by the Commission.



CERTIFICATION

I hereby certify that the information contained herein is true and complete to the best of my knowledge and belief.

Name
Melba Knippling

Position
UNIT HEAD

Company
Exxon Corporation

Box 1600 Midland, Texas

Date
10-19-83

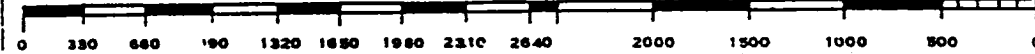
I hereby certify that the well location shown on this plat was derived from field notes of actual surveys made by me or under my supervision and that the same is true and correct to the best of my knowledge and belief.

Date Surveyed
10-14-83

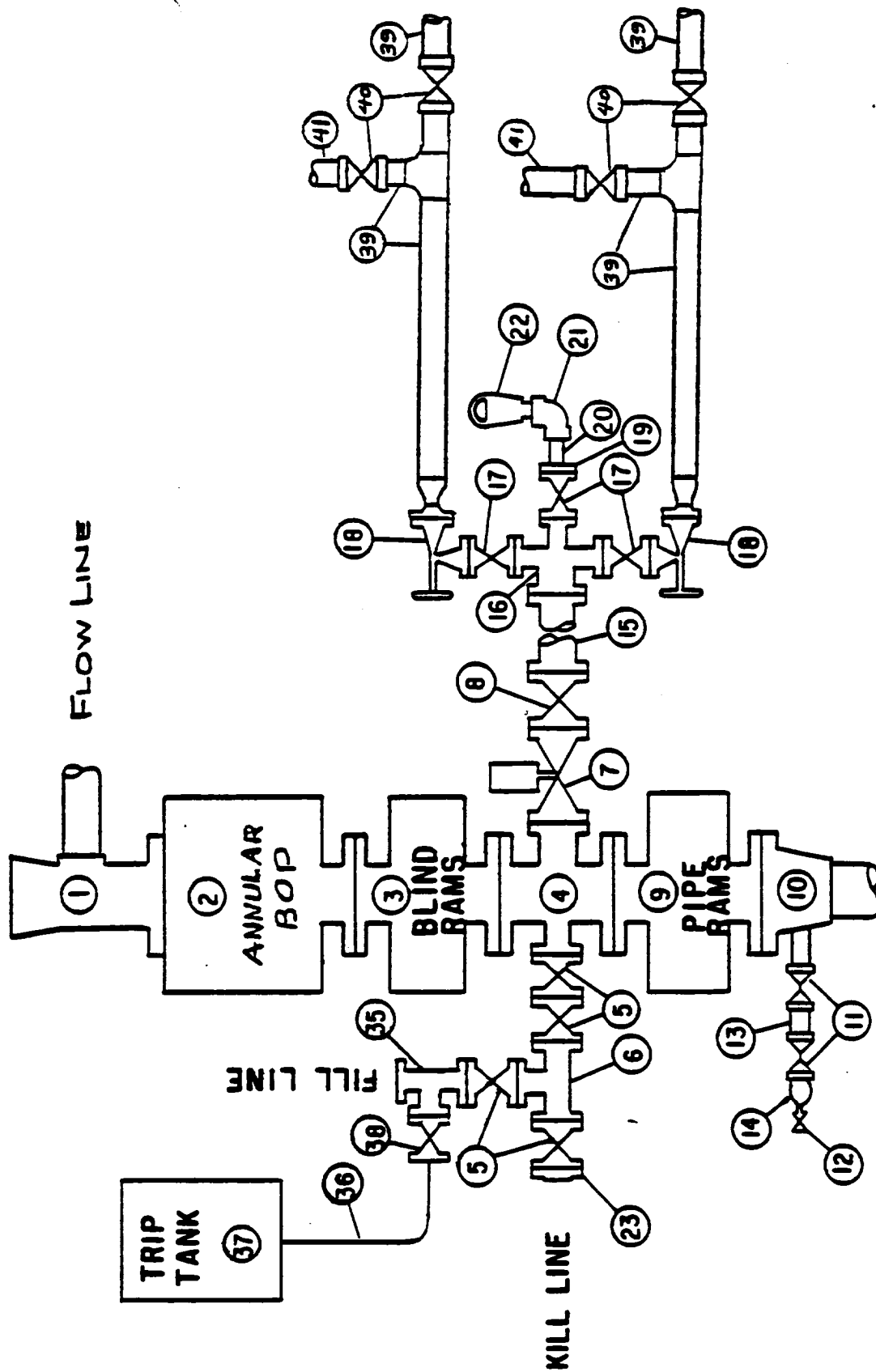
Registered Professional Engineer and/or Land Surveyor

John Wallis

Certificate No.
8699



MIDLAND DRILLING ORGANIZATION BLOWOUT PREVENTER SPECIFICATION TYPE II - C



10 POINT PLAN
YATES FEDERAL C-35
Section 5, 21S, 27E
Eddy County, New Mexico
October 19, 1983

1. The geologic name of the surface formation: Recent

2. The estimated tops of important geologic markers:

Delaware Mt. Grp. : 2500'

3. The estimated depths at which anticipated water, oil, gas, or other mineral bearing formations are expected to occur:

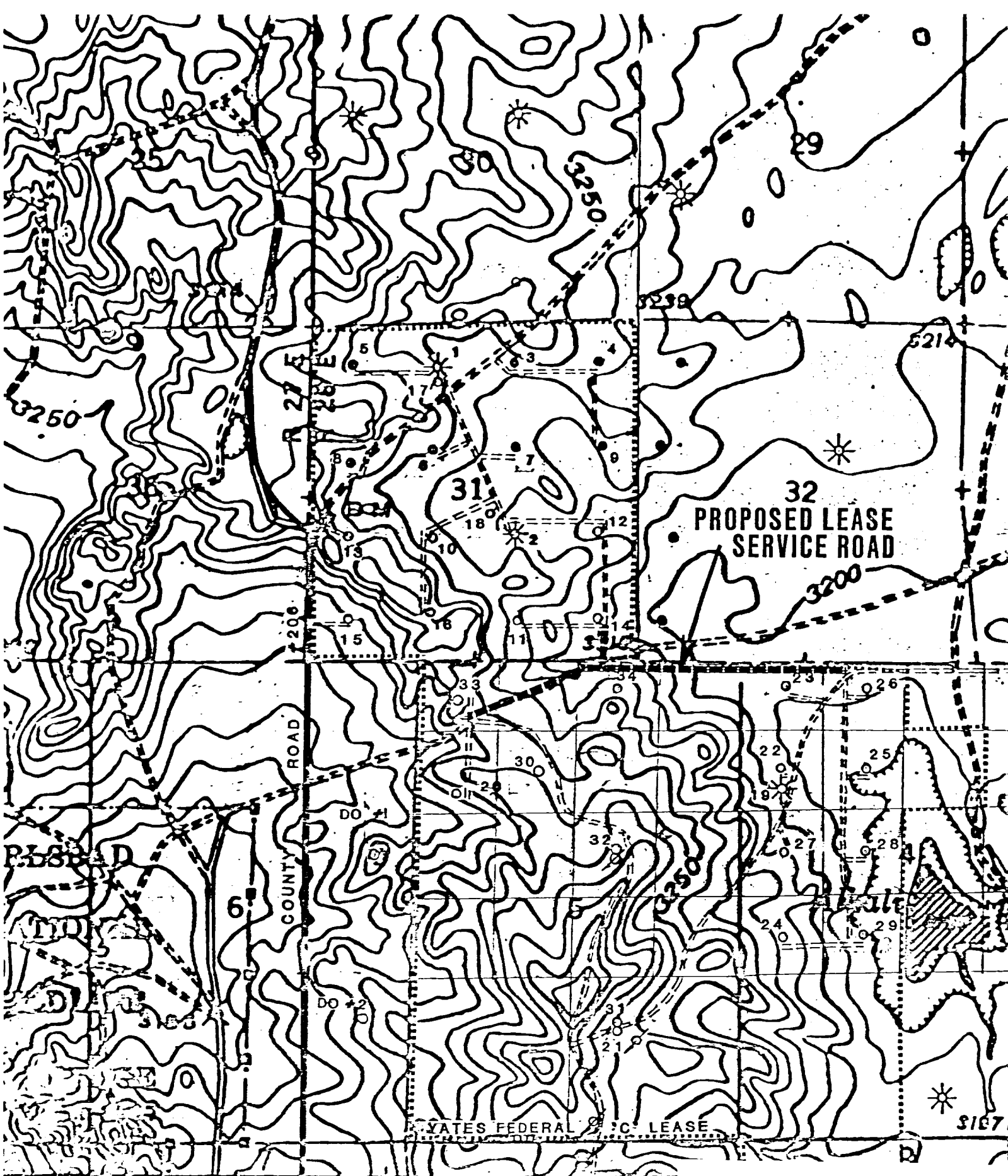
Deepest FW : 500'

4. Proposed casing program:

<u>STRING</u>	<u>SIZE</u>	<u>WEIGHT/GRADE</u>	<u>CONDITION</u>	<u>DEPTH INTERVAL</u>
Conductor	20"	94#/H-40	New	0- 40'
Surface	13-3/8"	48#/K-55	New	0- 600'
Intermediate	8-5/8"	24#/K-55	New	0-2500'
Production	5-1/2"	14#/K-55	New	0-3400'

5. Minimum specifications for pressure control equipment:

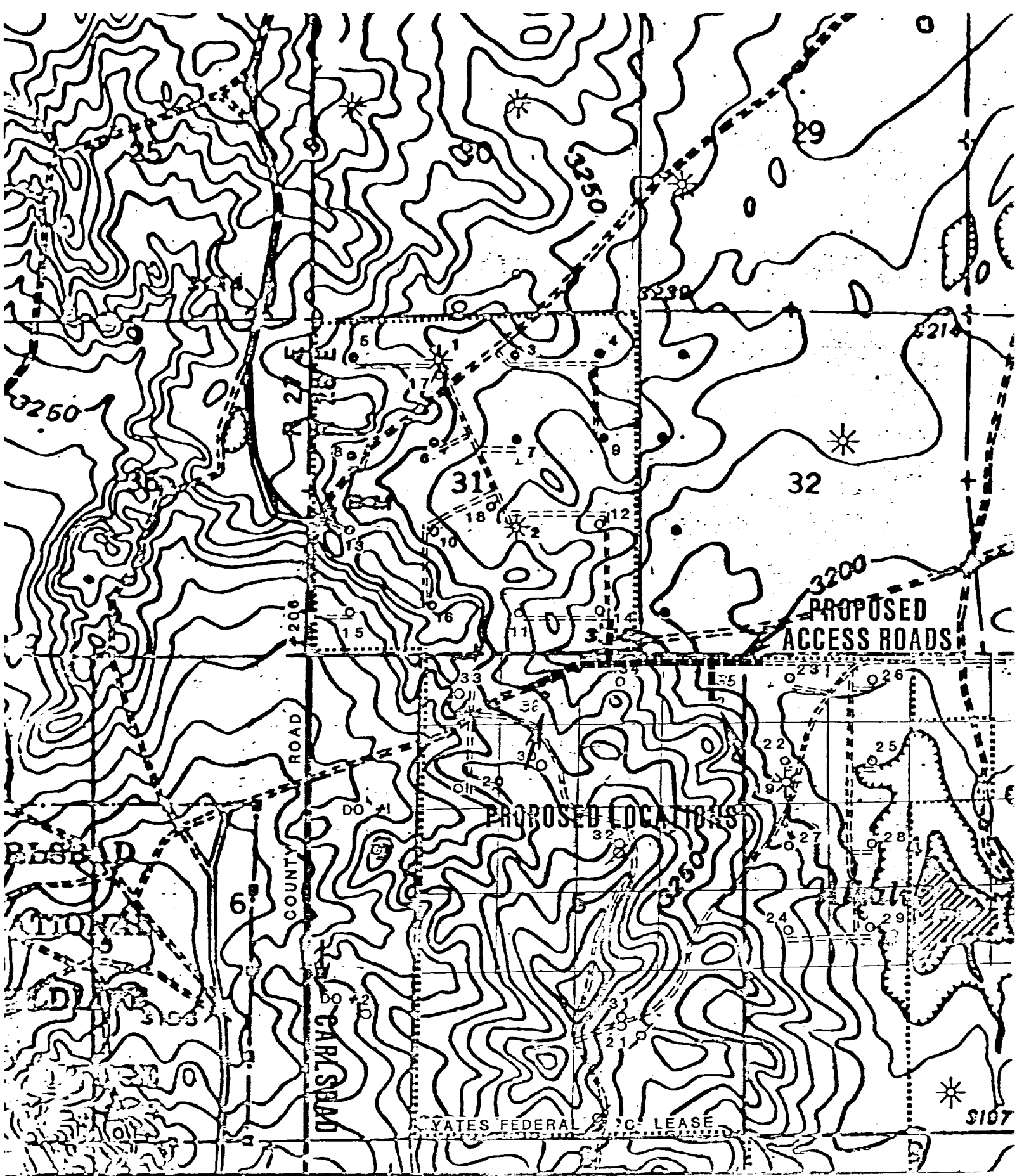
- A. Wellhead equipment - Threaded type, 2000 psi WP for 13-3/8" x 8-5/8" x 5-1/2" casing program with 2-7/8" tubing hanger.
- B. Blowout preventers - Refer to attached drawings and lists of equipment titled "Type II-C" for description of BOP stacks and choke manifold.
- C. BOP control unit - Unit will be hydraulically operated and have at least two control stations.
- D. Testing - Upon installation, the Type II-C BOP's for the 13-3/8" surface casing and the 8-5/8" intermediate casing will be tested to a low pressure (200-300 psi) and to a high pressure of 2000 psi. Casing rams will be body tested in a like manner. An operational test of the blowout preventers will be performed on each round trip, (but not more than once each day); the annular and pipe rams preventers will be closed on drill pipe and the blind rams will be closed while pipe is out of the hole.



E. | 108000 YARDS

EXHIBIT "A"
LEASE SERVICE ROAD
SECTIONS 4,5 T21S R27E
SECTION 31 T20S R28E

by Max J. Gleissner, S. T. Penick,
 Mellan, and C. E. Walker



E. | 1080000 YARDS

y by Max J. Gleissner, S. T. Penick,
 Hollan, and C. E. Walker

EXHIBIT "A"
YATES FEDERAL "C" #35 & #36
LOTS 1,3 SEC. 5
T-21-S R-27-E
FRY COUNTY NEW MEXICO