

Exxon Lse. No. _____ NE MEXICO OIL CONSERVATION COMMISSION
State Lse. No. _____ WELL LOCATION AND ACREAGE DEDICATION PLAT
Federal Lse. No. _____ All distances must be from the outer boundaries of the Section.

Form C-102
Supersedes C-128
Effective 1-1-65

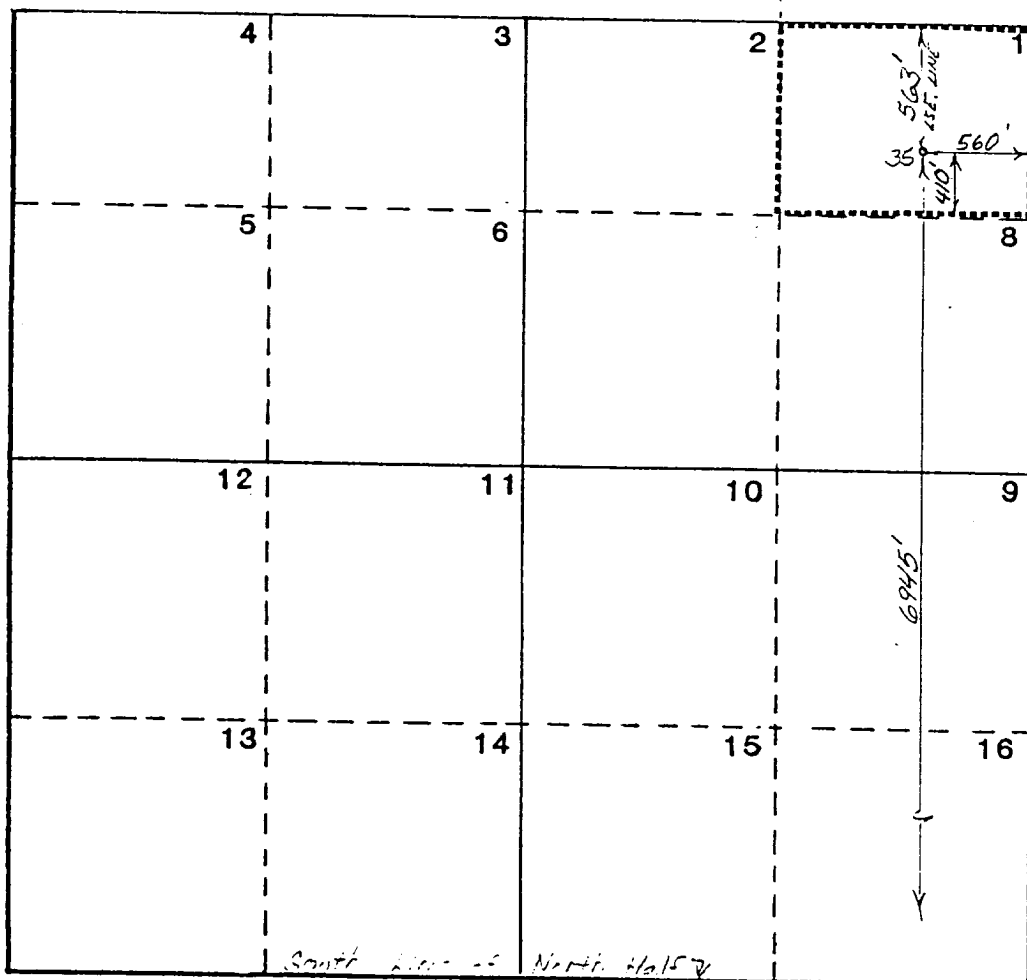
Operator Exxon Corporation			Lease YATES "C" FEDERAL		Well No. 35
Unit Letter 1	Section 5	Township 21 S	Range 27 E	County EDDY	
Actual Footage Location of Well: 560 feet from the EAST line and 6945' feet from the SOUTH line					
Ground Level Elev. 3207	Producing Formation DELAWARE		Pool UNDESIG. AVALON	Dedicated Acreage: 29.85 Acres	

1. Outline the acreage dedicated to the subject well by colored pencil or hachure marks on the plat below.
2. If more than one lease is dedicated to the well, outline each and identify the ownership thereof (both as to working interest and royalty).
3. If more than one lease of different ownership is dedicated to the well, have the interests of all owners been consolidated by communitization, unitization, force-pooling, etc?

☐ Yes ☐ No If answer is "yes," type of consolidation _____

If answer is "no," list the owners and tract descriptions which have actually been consolidated. (Use reverse side of this form if necessary.) _____

No allowable will be assigned to the well until all interests have been consolidated (by communitization, unitization, forced-pooling, or otherwise) or until a non-standard unit, eliminating such interests, has been approved by the Commission.



CERTIFICATION

I hereby certify that the information contained herein is true and complete to the best of my knowledge and belief.

Name
Melba Knippling
Position
UNIT HEAD
Company **Exxon Corporation**
Box 1600 Midland, Texas
Date
10-19-83

I hereby certify that the well location shown on this plat was plotted from field notes of actual surveys made by me or under my supervision and that the same is true and correct to the best of my knowledge and belief.

Date Surveyed
10-14-83

Registered Professional Engineer
and Land Surveyor

John Wallis
Certificate No.
81699