

NM OIL CORP.
Drawer DD
Artesia, N.M. 88210

SUBMIT IN ' LIGATE'
(Other instructions on
reverse side)

Form approved.
Budget Bureau No. 42-R1425.

UNITED STATES
DEPARTMENT OF THE INTERIOR
GEOLOGICAL SURVEY

30-015-24702

APPLICATION FOR PERMIT TO DRILL, DEEPEN, OR PLUG BACK

1a. TYPE OF WORK

DRILL ☒X

DEEPEN ☐

PLUG BACK ☐

b. TYPE OF WELL

OIL WELL ☒X

GAS WELL ☐

OTHER

2. NAME OF OPERATOR

Exxon Corporation

3. ADDRESS OF OPERATOR

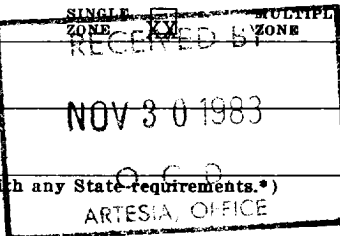
P.O. Box 1600; Midland, Texas 79702

4. LOCATION OF WELL (Report location clearly and in accordance with any State requirements.)

At surface

407' FNL & 660' FWL of Section

At proposed prod. zone



14. DISTANCE IN MILES AND DIRECTION FROM NEAREST TOWN OR POST OFFICE*

8 miles N from Carlsbad

15. DISTANCE FROM PROPOSED* 407' lse. line

LOCATION TO NEAREST

PROPERTY OR LEASE LINE, FT.

(Also to nearest drlg. unit line, if any)

407' drlg. line

16. NO. OF ACRES IN LEASE

228.35

17. NO. OF ACRES ASSIGNED TO THIS WELL

28.35

18. DISTANCE FROM PROPOSED LOCATION* 1200' S to #1 TO NEAREST WELL, DRILLING, COMPLETED, OR APPLIED FOR, ON THIS LEASE, FT.

19. PROPOSED DEPTH

6100'

20. ROTARY OR CABLE TOOLS

Rotary

21. ELEVATIONS (Show whether DF, RT, GR, etc.)

3198' GR

22. APPROX. DATE WORK WILL START*

11-83

PROPOSED CASING AND CEMENTING PROGRAM

SIZE OF HOLE	SIZE OF CASING	WEIGHT PER FOOT	SETTING DEPTH	QUANTITY OF CEMENT
26"	20"	94#	40'	25 sx Redimix-TOC Surface
17 1/2"	13 3/8"	48#	600'	350 sx-TOC Surface
11"	8 5/8"	24#	2500'	600 sx-TOC Surface
7 7/8"	5 1/2"	14,15.5#	6100'	700 sx-TOC-Tie into int. csg.

2500'
2800'
6100'

Posted Apr
Revised 11-2-83



IN ABOVE SPACE DESCRIBE PROPOSED PROGRAM: If proposal is to deepen or plug back, give data on present productive zone and proposed new productive zone. If proposal is to drill or deepen directionally, give pertinent data on subsurface locations and measured and true vertical depths. Give blowout preventer program, if any.

24.

SIGNED

Malva Kripling

TITLE

Unit Head

DATE

11-1-83

(This space for Federal or State office use)

PERMIT NO.

APPROVAL DATE

APPROVED BY

Orig. Sgd. Earl R. Cunningham

TITLE

District Manager

DATE

NOV 28 1983

CONDITIONS OF APPROVAL, IF ANY:

APPROVAL SUBJECT TO
GENERAL REQUIREMENTS AND
SPECIAL STIPULATIONS
ATTACHED

Howard
11-28-83

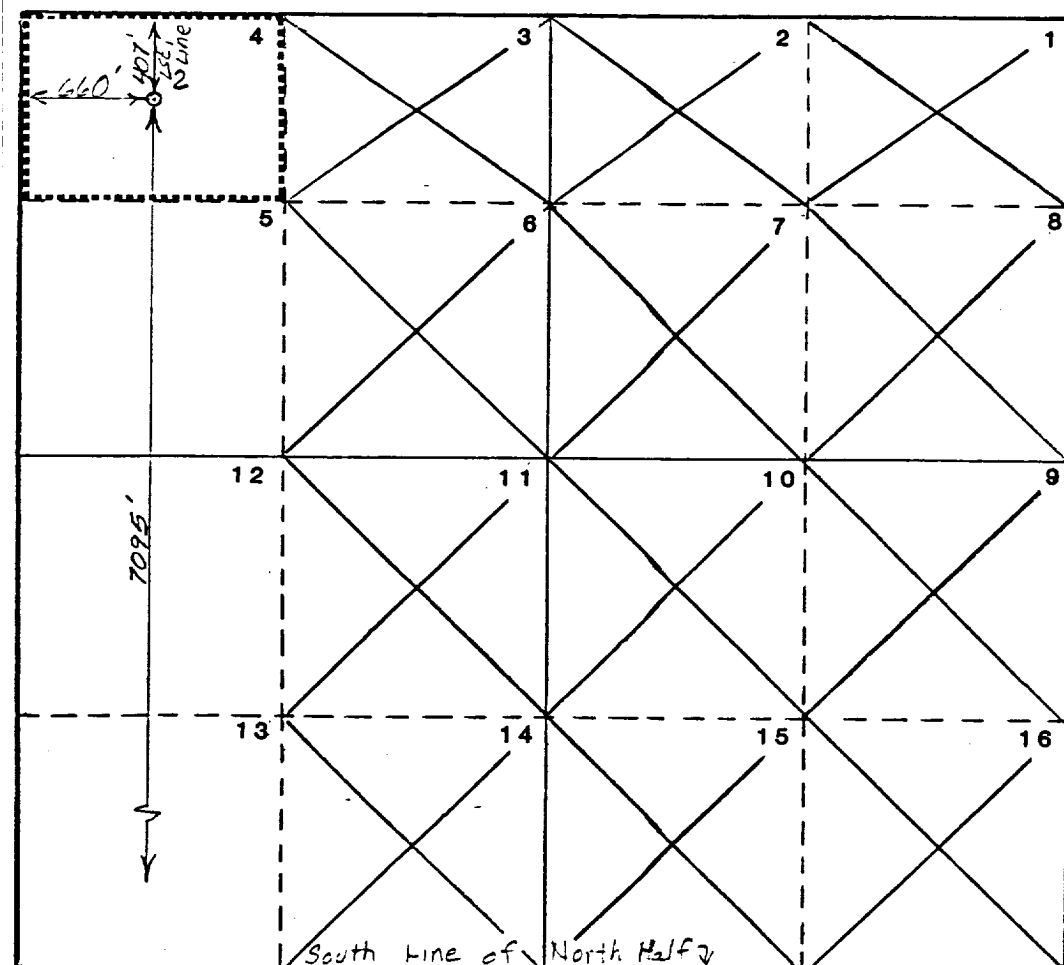
Operator Exxon Corporation		Lease BURTON FLAT FEDERAL "B"		Well No. 2
Unit Letter 4	Section 1	Township 21 S	Range 27 E	County EDDY
Actual Footage Location of Well: 7095' 427 feet from the SOUTH North line and 660 feet from the WEST line				
Ground Level Elev. 3198	Producing Formation BONE SPRING	Pool UNDESIG. AVALON	Dedicated Acreage: 28.35 Acres	

1. Outline the acreage dedicated to the subject well by colored pencil or hachure marks on the plat below.
2. If more than one lease is dedicated to the well, outline each and identify the ownership thereof (both as to working interest and royalty).
3. If more than one lease of different ownership is dedicated to the well, have the interests of all owners been consolidated by communitization, unitization, force-pooling, etc?

☐ Yes ☐ No If answer is "yes," type of consolidation _____

If answer is "no," list the owners and tract descriptions which have actually been consolidated. (Use reverse side of this form if necessary.) _____

No allowable will be assigned to the well until all interests have been consolidated (by communitization, unitization, forced-pooling, or otherwise) or until a non-standard unit, eliminating such interests, has been approved by the Commission.



CERTIFICATION

I hereby certify that the information contained herein is true and complete to the best of my knowledge and belief.

Name
Melba Knippling
 Position
UNIT HEAD
 Company Exxon Corporation
 Box 1600 Midland, Texas
 Date
10-28-83

I hereby certify that the well location shown on this plat was plotted from field notes and actual surveys made by me or under my supervision and that the same is true and correct to the best of my knowledge and belief.

Date Surveyed
10-21-83
 Registered Professional Engineer and/or Land Surveyor
W. J. Edmund
 Certificate No.
6157

8 Miles N of CARLSBAD, New Mexico

C.E. Sec. File No. WA-8094-B1

Exxon Lse. No. _____
State Lse. No. _____
Federal Lse. No. _____

NEW MEXICO OIL CONSERVATION COMMISSION
WE LOCATION AND ACREAGE DEDICAT PLAT

Form C-102
Supersedes C-128
Effective 1-1-65

All distances must be from the outer boundaries of the Section.

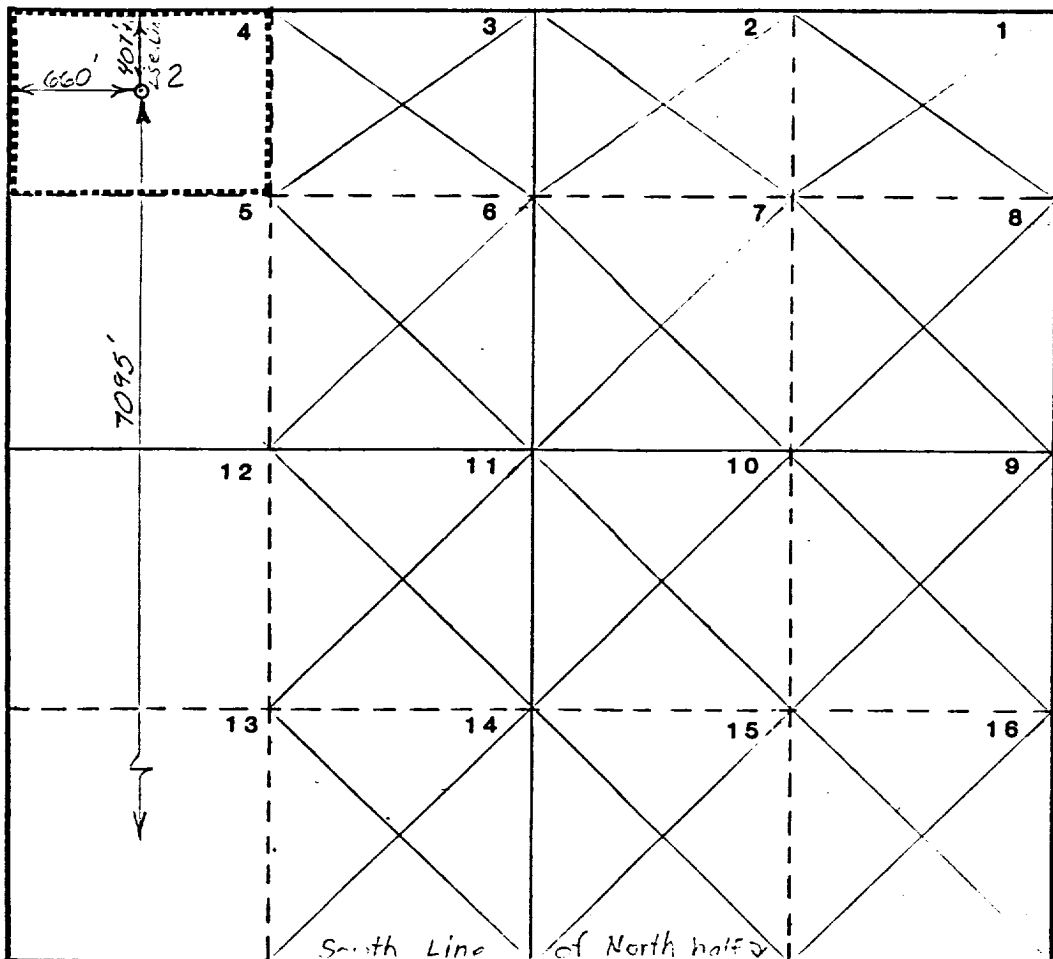
Operator Exxon Corporation			Lease BURTON FLAT FEDERAL "B"		Well No. 2
Unit Letter 4	Section 1	Township 21 S	Range 27 E	County Eddy	
Actual Footage Location of Well: 7095' 407 feet from the <u>North</u> line and 660 feet from the <u>West</u> line					
Ground Level Elev. 3198	Producing Formation DELAWARE		Pool UNDESIG. AVALON		Dedicated Acreage: 28.35 Acres

1. Outline the acreage dedicated to the subject well by colored pencil or hachure marks on the plat below.
2. If more than one lease is dedicated to the well, outline each and identify the ownership thereof (both as to working interest and royalty).
3. If more than one lease of different ownership is dedicated to the well, have the interests of all owners been consolidated by communitization, unitization, force-pooling, etc?

☐ Yes ☐ No If answer is "yes," type of consolidation _____

If answer is "no," list the owners and tract descriptions which have actually been consolidated. (Use reverse side of this form if necessary.) _____

No allowable will be assigned to the well until all interests have been consolidated (by communitization, unitization, forced-pooling, or otherwise) or until a non-standard unit, eliminating such interests, has been approved by the Commission.

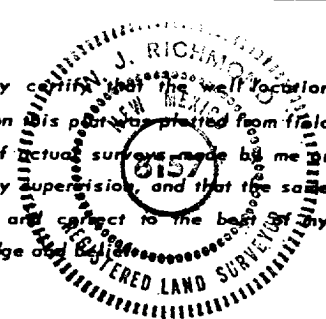


CERTIFICATION

I hereby certify that the information contained herein is true and complete to the best of my knowledge and belief.

Name
Melba Kripling
Position
UNIT HEAD
Company
Exxon Corporation
Box 1600 Midland, Texas
Date
10-28-83

I hereby certify that the well location shown on this plat was plotted from field notes of actual surveys made by me or under my supervision, and that the same is true and correct to the best of my knowledge and belief.



Date Surveyed
10-21-83
Registered Professional Engineer
and/or Land Surveyor
J. Richmond
Certificate No.
6157

8 Miles North of Carlsbad, New Mexico

C.E. Sec. File No. WA-8094-B-2

BLOWOUT PREVENTER SPECIFICATIONS
EQUIPMENT DESCRIPTION

TYPE II-C

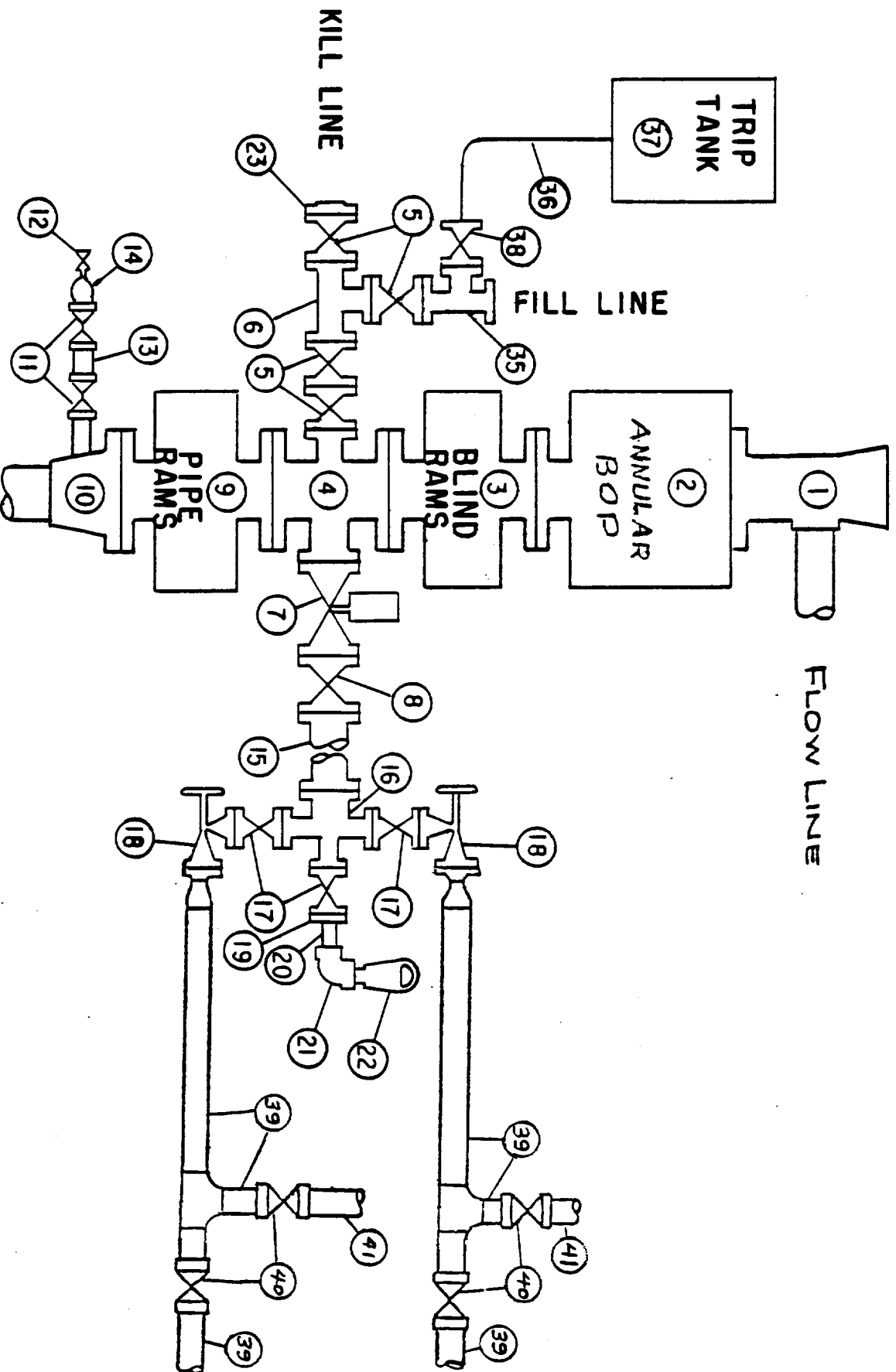
All equipment should be at least 2000 psi WP or higher unless otherwise specified.

1. Bell nipple.
2. Hydril or Shaffer bag type preventer.
3. Ram type pressure operated blowout preventer with blind rams.
4. Flanged spool with one 4-inch and one 2-inch (minimum) outlet.
5. 2-inch (minimum) flanged plug or gate valve.
6. 2-inch by 2-inch by 2-inch (minimum) flanged tee.
7. 4-inch pressure operated gate valve.
8. 4-inch flanged gate or plug valve.
9. Ram type pressure operated blowout preventer with pipe rams.
10. Flanged type casing head with one side outlet (furnished by Exxon).
11. 2-inch threaded (or flanged) plug or gate valve (furnished by Exxon).
Flanged on 5000# WP, threaded on 3000# WP or less.
12. Needle valve (furnished by Exxon).
13. 2-inch nipple (furnished by Exxon).
14. Tapped bull plug (furnished by Exxon).
15. 4-inch flanged spacer spool.
16. 4-inch by 2-inch by 2-inch by 2-inch flanged cross.
17. 2-inch flanged plug or gate valve.
18. 2-inch flanged adjustable choke.
19. 2-inch threaded flange.
20. 2-inch XXH nipple.
21. 2-inch forged steel 90° Ell.
22. Cameron (or equal.) threaded pressure gage.
23. Threaded flange.
35. 2-inch flanged tee.
36. 3-inch (minimum) hose. (Furnished by Exxon).
37. Trip tank. (Furnished by Exxon).
38. 2-inch flanged plug or gate valve.
39. 2-1/2-inch pipe, 300' to pit, anchored.
40. 2-1/2-inch SE valve.
41. 2-1/2-inch line to steel pit or separator.

NOTES:

1. Items 3, 4 and 9 may be replaced with double ram type preventer with side outlets between the rams.
2. The two valves next to the stack on the fill and kill line to be closed unless drill string is being pulled.
3. Kill line is for emergency use only. This connection shall not be used for filling.
4. Replacement pipe rams and blind rams shall be on location at all times.
5. Only type U, LWS and QRC ram type preventers with secondary seals are acceptable for 5000 psi WP and higher BOP stacks.
6. Type E ram-type BOP's with factory modified side outlets may be used on 3000 psi or lower WP BOP stacks.

MIDLAND DRILLING ORGANIZATION BLOWOUT PREVENTER SPECIFICATION TYPE II - C



10 POINT PLAN
BURTON FLAT FEDERAL B-2
Section 1, 21S, 27E
Eddy County, New Mexico
October 19, 1983

1. The geologic name of the surface formation: Recent
2. The estimated tops of important geologic markers:

Delaware Mt. Grp. : 2500'
Bone Spring : 5000'

3. The estimated depths at which anticipated water, oil, gas, or other mineral bearing formations are expected to occur:

Deepest FW : 500'
Oil
Bone Spring : 5000'

4. Proposed casing program:

<u>STRING</u>	<u>SIZE</u>	<u>WEIGHT/GRADE</u>	<u>CONDITION</u>	<u>DEPTH INTERVAL</u>
Conductor	20"	94#/H-40	New	0- 40'
Surface	13-3/8"	48#/K-55	New	0- 600'
Intermediate	8-5/8"	24#/K-55	New	0-2800'
Production	5-1/2"	14#&15.5# /K-55	New	0-6100'

5. Minimum specifications for pressure control equipment:

- A. Wellhead equipment - Threaded type, 2000 psi WP for 13-3/8" x 8-5/8" x 5-1/2" casing program with 2-7/8" tubing hanger.
- B. Blowout preventers - Refer to attached drawings and lists of equipment titled "Type II-C" for description of BOP stacks and choke manifold.
- C. BOP control unit - Unit will be hydraulically operated and have at least two control stations.
- D. Testing - Upon installation, the Type II-C BOP's for the 13-3/8" surface casing and the 8-5/8" intermediate casing will be tested to a low pressure (200-300 psi) and to a high pressure of 2000 psi. Casing rams will be body tested in a like manner. An operational test of the blowout preventers will be performed on each round trip, (but not more than once each day); the annular and pipe rams preventers will be closed on drill pipe and the blind rams will be closed while pipe is out of the hole.