

Submit to Appropriate  
District Office  
State Lease - 4 copies  
Fee Lease - 3 copies

State of New Mexico  
Energy, Minerals and Natural Resources Department

Form C-102  
Revised 1-1-89

OIL CONSERVATION DIVISION

P.O. Box 2088  
Santa Fe, New Mexico 87504-2088

WELL LOCATION AND ACREAGE DEDICATION PLAT

All Distances must be from the outer boundaries of the section

DISTRICT I  
P.O. Box 1980, Hobbs, NM 88240

DISTRICT II  
P.O. Drawer DD, Artesia, NM 88210

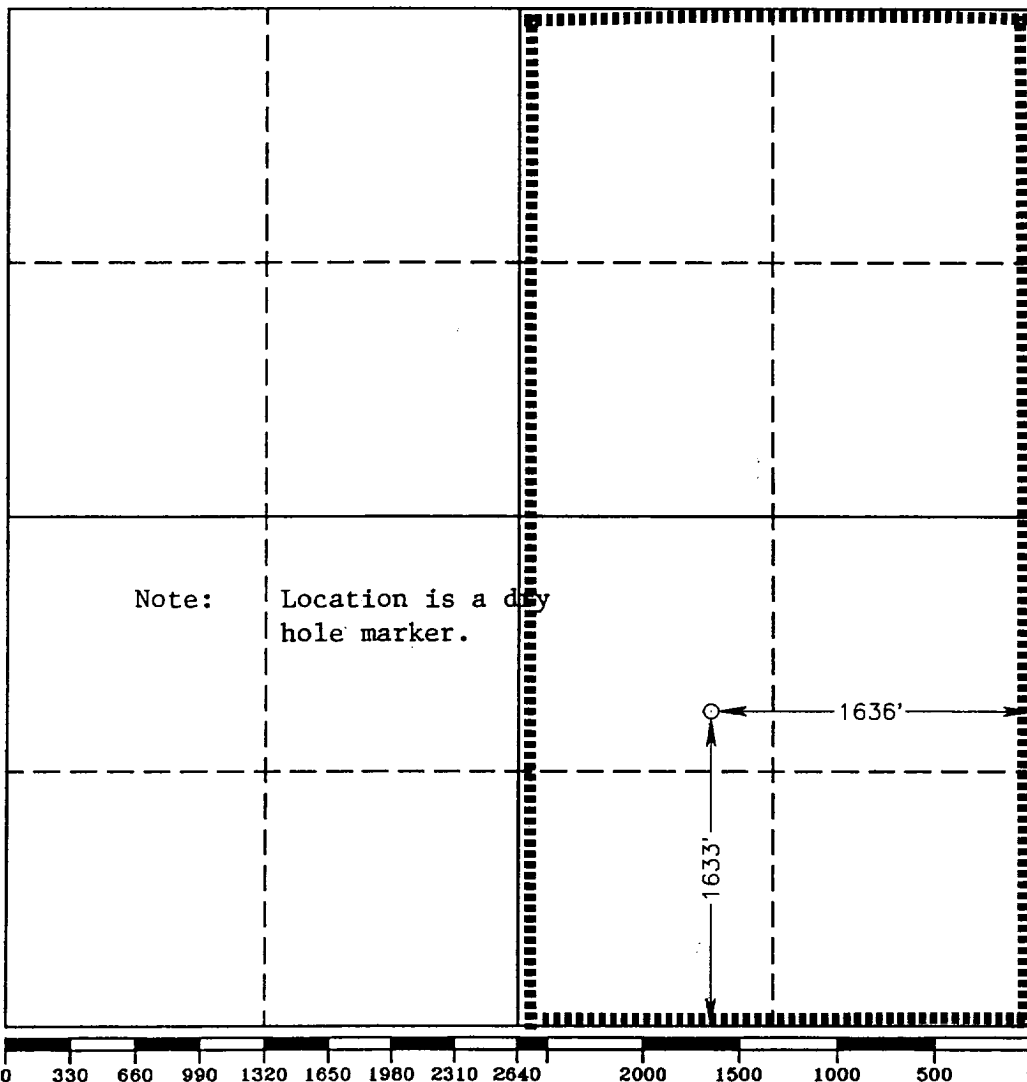
DISTRICT III  
1000 Rio Brazos Rd., Aztec, NM 87410

Operator SANTA FE ENERGY OPERATING PARTNERS, L.P.		Lease NAGOOTTEE PEAK "5" FEDERAL COM.		Well No. 1
Unit Letter J	Section 5	Township 22 SOUTH	Range 24 EAST NMPM	County EDDY
Actual Footage Location of Well: 1633 feet from the SOUTH line and 1636 feet from the EAST line				
Ground Level Elev. 4280.3'	Producing Formation	Pool	Dedicated Acreage: Acres	

- Outline the acreage dedicated to the subject well by colored pencil or hachure marks on the plat below.
- If more than one lease is dedicated to the well, outline each and identify the ownership thereof (both as to working interest and royalty).
- If more than one lease of different ownership is dedicated to the well, have the interest of all owners been consolidated by communitization, unitization, force-pooling, etc.?  
☐ Yes ☐ No If answer is "yes" type of consolidation \_\_\_\_\_

If answer is "no" list of owners and tract descriptions which have actually been consolidated. (Use reverse side of this form necessary.)

No allowable will be assigned to the well unit all interests have been consolidated (by communitization, unitization, forced-pooling, otherwise) or until a non-standard unit, eliminating such interest, has been approved by the Division.



OPERATOR CERTIFICATION

I hereby certify the the information contained herein is true and complete to the best of my knowledge and belief.

Signature  
*Mike Burton*  
Printed Name  
Mike Burton  
Position  
Drilling Manager  
Company  
Santa Fe Snyder Corporation  
Date  
December 3, 1999

SURVEYOR CERTIFICATION

I hereby certify that the well location shown on this plat was plotted from field notes of actual surveys made by me or under my supervision, and that the same is true and correct to the best of my knowledge and belief.

Date Surveyed  
JUNE 17, 1993  
Signature & Seal of  
Professional Surveyor

*James L. Jones*  
Certificate No. JOHN W. WEST, 676  
RONALD J. EIDSON, 3239  
GARY L. JONES, 7377

93-11-1151