

STATE OF NEW MEXICO
ENERGY AND MINERALS DEPARTMENT

OIL CONSERVATION DIVISION

Form C-101
Revised 10-1-78

P. O. BOX 2088
SANTA FE, NEW MEXICO 87501

NO. OF COPIES RECEIVED	
DISTRIBUTION	
SANTA FE	<input checked="" type="checkbox"/>
FILE	<input checked="" type="checkbox"/>
U.S.G.S.	<input checked="" type="checkbox"/>
LAND OFFICE	<input checked="" type="checkbox"/>
OPERATOR	<input checked="" type="checkbox"/>

RECEIVED BY
DEC 28 1983
O.C.D.

Indicate Type of Lease
STATE ☒ FEE ☐
State Oil & Gas Lease No.
L-2766

APPLICATION FOR PERMIT TO DRILL, DEEPEN, OR PLUG BACK

1a. Type of Work DRILL <input checked="" type="checkbox"/> DEEPEN <input type="checkbox"/> PLUG BACK <input type="checkbox"/>		2. Unit Agreement Name Burton Flat Deep Unit No. 14-08-0001-12391
b. Type of Well OIL WELL <input checked="" type="checkbox"/> GAS WELL <input type="checkbox"/> OTHER <input type="checkbox"/>		8. Farm or Lease Name Burton Flat Deep Unit
2. Name of Operator MONSANTO OIL COMPANY		9. Well No. 23
3. Address of Operator First City Center, Ste. 1300 500 West Texas, Midland, Texas 79701		10. Field and Pool, or Wildcat Undesignated-Bone Spring
4. Location of Well UNIT LETTER Lot 8 H LOCATED 1527' FEET FROM THE North LINE AND 744' FEET FROM THE East LINE OF SEC. 2 TWP. 21 S RGE. 27 E NMPM		12. County Eddy
19. Proposed Depth 5700'±		19A. Formation Bone Spring
20. Rotary or C.T. Rotary		21. Elevations (Show whether DF, RT, etc.) 3180' G.L.
21A. Kind & Status Plug. Bond Statewide		21B. Drilling Contractor Unknown
22. Approx. Date Work will start February 1, 1984		

23. PROPOSED CASING AND CEMENT PROGRAM

SIZE OF HOLE	SIZE OF CASING	WEIGHT PER FOOT	SETTING DEPTH	SACKS OF CEMENT	EST. TOP
17-1/2"	13-3/8" H-40	48.0# ST&C	500'±	500 sx	Circulated
11"	8-5/8" J-55	24.0# ST&C	2500'±	700 sx	Circulated
7-7/8"	5-1/2" K-55	15.5# LT&C	5700'±	750 sx	Sufficient to isolate all water, oil, and gas zones.

Propose to drill to approximately 5700' to test Bone Spring and intermediate formations.

See attached "Supplemental Data" for casing program and pressure control details.

If commercial production is indicated, the well will be completed in the deepest formation, by cementing production casing, perforating and stimulating. Run 2-7/8" tubing and test well.

APPROVED BY 180 DAYS
6-39-84
JERRY W. LONG

IN ABOVE SPACE DESCRIBE PROPOSED PROGRAM: IF PROPOSAL IS TO DEEPEN OR PLUG BACK, GIVE DATA ON PRESENT PRODUCTIVE ZONE AND PROPOSED NEW PRODUCTION ZONE. GIVE BLOWOUT PREVENTER PROGRAM, IF ANY.

I hereby certify that the information above is true and complete to the best of my knowledge and belief.

Signed Jerry W. Long Title Agent Date December 22, 1983
(This space for State Use)

APPROVED BY Mike Walker TITLE OIL AND GAS INSPECTOR DATE DEC 29 1983
CONDITIONS OF APPROVAL, IF ANY

Noted & OK'd
DD-1a h/ Book
12-30-83

NEW MEXICO OIL CONSERVATION COMMISSION
WELL LOCATION AND ACREAGE DEDICATION PLAT

Form C-102
Supersedes C-128
Effective 1-1-65

All distances must be from the outer boundaries of the Section.

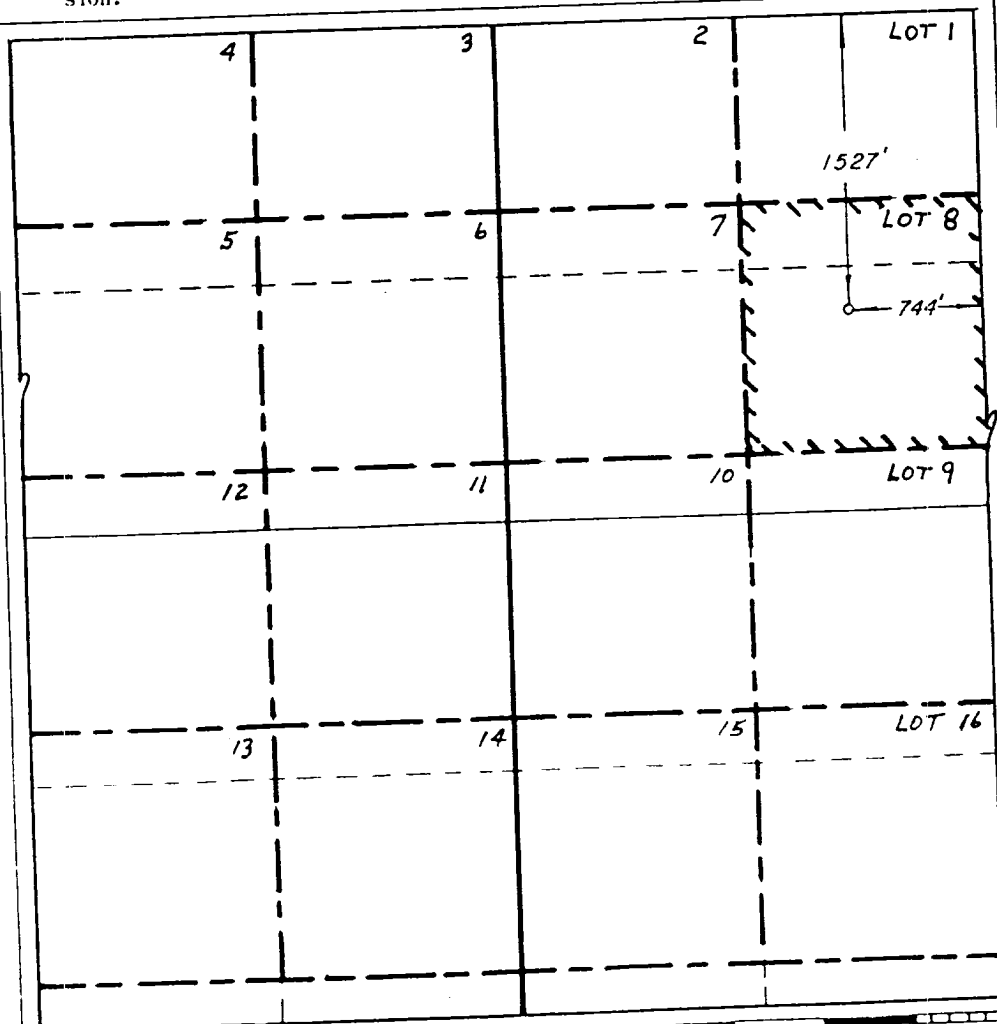
Operator MONSANTO		Lease Burton Flat Deep Unit		Well No. #23
Unit Letter Lot 8	Section 2	Township T-21-S	Range 27	County EDDY
Actual Footage Location of Well: 1527' feet from the NORTH line and 744' feet from the EAST line				
Ground Level Elev. 3180'	Producing Formation Bone Spring	Pool Undesignated	Dedicated Acreage: 40 Acres	

1. Outline the acreage dedicated to the subject well by colored pencil or hatchure marks on the plat below.
2. If more than one lease is dedicated to the well, outline each and identify the ownership thereof (both as to working interest and royalty). SINGLE LEASE
3. If more than one lease of different ownership is dedicated to the well, have the interests of all owners been consolidated by communitization, unitization, force-pooling, etc?

☐ Yes ☐ No If answer is "yes," type of consolidation Unitization

If answer is "no," list the owners and tract descriptions which have actually been consolidated. (Use reverse side of this form if necessary.)

No allowable will be assigned to the well until all interests have been consolidated (by communitization, unitization, forced-pooling, or otherwise) or until a non-standard unit, eliminating such interests, has been approved by the Commission.



CERTIFICATION

I hereby certify that the information contained herein is true and complete to the best of my knowledge and belief.

Jerry W. Long
Name
JERRY W. LONG

Position
Agent

Company
MONSANTO OIL COMPANY

Date
December 19, 1983

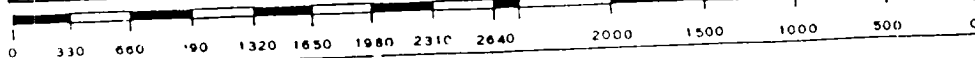
I hereby certify that the well location shown on this plat was plotted from field notes of actual surveys made by me or under my supervision, and that the same is true and correct to the best of my knowledge and belief.

DECEMBER 9, 1983

Date Surveyed
RICHARD B. DUNIVEN

Registered Professional Engineer and/or Licensed Surveyor

Richard B. Duniven
Certificate No. **1 4882**



SUPPLEMENTAL DRILLING DATA

MONSANTO OIL COMPANY
No.23 Burton Flat Deep Unit
Lot 8, Sec.2-21S-27E
Eddy County, N.M.
L-2766

The following items supplement the information on Form C-101.

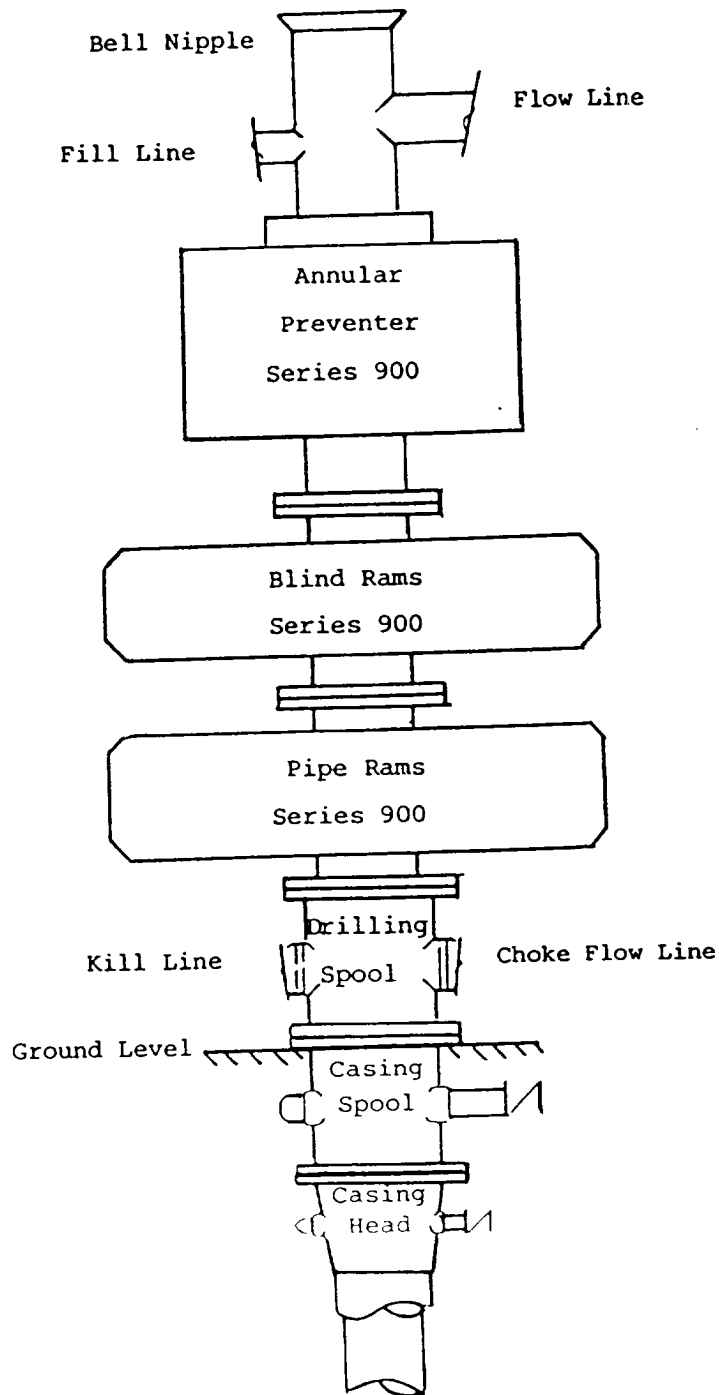
1. PROPOSED CASING PROGRAM:

- 13-3/8" Casing - H-40, 48# ST&C casing will be set to 500'± with cement circulated.
- 8-5/8" Casing - J-55, 24# ST&C casing will be set to 2500'± with cement circulated.
- 5-1/2" Casing - K-55, 15.5# LT&C casing will be set thru the producing zone and cemented with sufficient cement to isolate all oil, gas and water zones.

Intermediate and production casing strings will be tested to 1000 psi.

- ### 2. PRESSURE CONTROL EQUIPMENT:
- Pressure control equipment will include a 3000#WP blowout preventer stack with Series 900 annular preventer and Series 900 blind and pipe rams. The BOP stack will include a kill line and choke manifold tested to 2000 psi. BOP hydraulic controls will be operated at least daily. Mud weight will be maintained between 8.8 and 9.5#/Gal. to control bottom hole pressure. A kelly cock will be installed on the kelly joint and a full opening safety valve will be available on the rig floor.

MONSANTO OIL COMPANY
No.23 Burton Flat Deep Unit
Lot 8, Sec.2-21S-27E
Eddy County, N.M.



BLOWOUT PREVENTER STACK
Rams Operated Daily