

30-015-14735

STATE OF NEW MEXICO  
ENERGY AND MINERALS DEPARTMENT

OIL CONSERVATION DIVISION

Form C-101  
Revised 10-1-78

P. O. BOX 2088  
SANTA FE, NEW MEXICO 87501

NO. OF COPIES RECEIVED	
DISTRIBUTION	
SANTA FE	✓
FILE	✓
U.S.G.S.	2
LAND OFFICE	✓
OPERATOR	✓

RECEIVED BY  
DEC 28 1983  
SPECIAL SERVICE

5A. Indicate Type of Lease  
STATE ☒ FEE ☐  
5. State Oil & Gas Lease No.  
L-2766

APPLICATION FOR PERMIT TO DRILL, DEEPEN, OR PLUG BACK

1a. Type of Work <i>Jerry Long</i>	DRILL <input checked="" type="checkbox"/> DEEPEN <input type="checkbox"/> PLUG BACK <input type="checkbox"/>	7. Lease Agreement Name Burton Flat Deep Unit MOS 14-08-0001-12391
b. Type of Well OIL WELL <input checked="" type="checkbox"/> GAS WELL <input type="checkbox"/> OTHER <input type="checkbox"/>	SINGLE ZONE <input checked="" type="checkbox"/> MULTIPLE ZONE <input type="checkbox"/>	8. Farm or Lease Name Burton Flat Deep Unit
2. Name of Operator MONSANTO OIL COMPANY ✓		9. Well No. 24
3. Address of Operator First City Center, Ste. 1300 500 West Texas, Midland, Texas 79701		10. If not a Pool, or Wildcat Undesignated-Bone Spring
4. Location of Well UNIT LETTER Lot 1 <i>H</i> LOCATED 426' FEET FROM THE North LINE AND 660' FEET FROM THE East LINE OF SEC. 2 TWP. 21 S RGE. 27 E NADRA		11. County Eddy
19. Proposed Depth 5700'±	19A. Formation Bone Spring	20. Rotary or C.T. Rotary
21. If new well, show whether DF, RL, etc.) 3188' G.L.	21A. Kind & Content Reg. Bond Statewide	21B. Drilling Contractor Unknown
		22. Approx. Date Work will start February 1, 1984

23.

PROPOSED CASING AND CEMENT PROGRAM

SIZE OF HOLE	SIZE OF CASING	WEIGHT PER FOOT	SETTING DEPTH	SACKS OF CEMENT	EST. TOP
17-1/2"	13-3/8" H-40	48.0# ST&C	500'±	500 sx	Circulated
11"	8-5/8" J-55	24.0# ST&C	2500'±	700 sx	Circulated
7-7/8"	5-1/2" K-55	15.5# LT&C	5700'±	750 sx	Sufficient to isolate all water, oil, and gas zones.

Propose to drill to approximately 5700' to test Bone Spring and intermediate formations.  
See Attached "Supplemental Data" for casing program and pressure control details.

If commercial production is indicated, the well will be completed in the deepest formation, by cementing production casing, perforating and stimulating. Run 2-7/8" tubing and test well.

180 DAYS  
6-29-84  
SPECIAL SERVICE

IN ABOVE SPACE DESCRIBE PROPOSED PROGRAM; IF PROPOSAL IS TO DEEPEN OR PLUG BACK, GIVE DATA ON PRESENT PRODUCTIVE ZONE AND PROPOSED NEW PRODUCTIVE ZONE. GIVE BLOWOUT PREVENTER PROGRAM, IF ANY.

I hereby certify that the information above is true and complete to the best of my knowledge and belief.

Signed *Jerry H. Long* Title Agent Date December 22, 1983  
(This space for State Use)

OIL AND GAS INSPECTOR

APPROVED BY *Mike Walker* TITLE DATE DEC 29 1983

CONDITIONS OF APPROVAL, IF ANY:

Posted 2/29/84  
JD-1221/Book  
12-30-83

8.5/0 casing

NEW MEXICO OIL CONSERVATION COMMISSION  
WELL LOCATION AND ACREAGE DEDICATION PLAT

Form C-102  
Supersedes C-128  
Effective 1-1-65

All distances must be from the outer boundaries of the Section.

Operator <b>MONSANTO</b>			Lease <b>Burton Flat Deep Unit</b>		Well No. <b>#24</b>
Unit Letter <b>Lot 1 A</b>	Section <b>2</b>	Township <b>1-21-S</b>	Range <b>27</b>	County <b>EDDY</b>	
Actual Footage Location of Well: <b>476'</b> feet from the <b>NORTH</b> line and <b>660'</b> feet from the <b>EAST</b> line					
Ground Level Elev. <b>3188'</b>	Producing Formation <b>Bone Spring</b>		Pool <b>Undesignated</b>		Dedicated Acreage: <b>28.46</b> Acres

1. Outline the acreage dedicated to the subject well by colored pencil or hachure marks on the plat below.

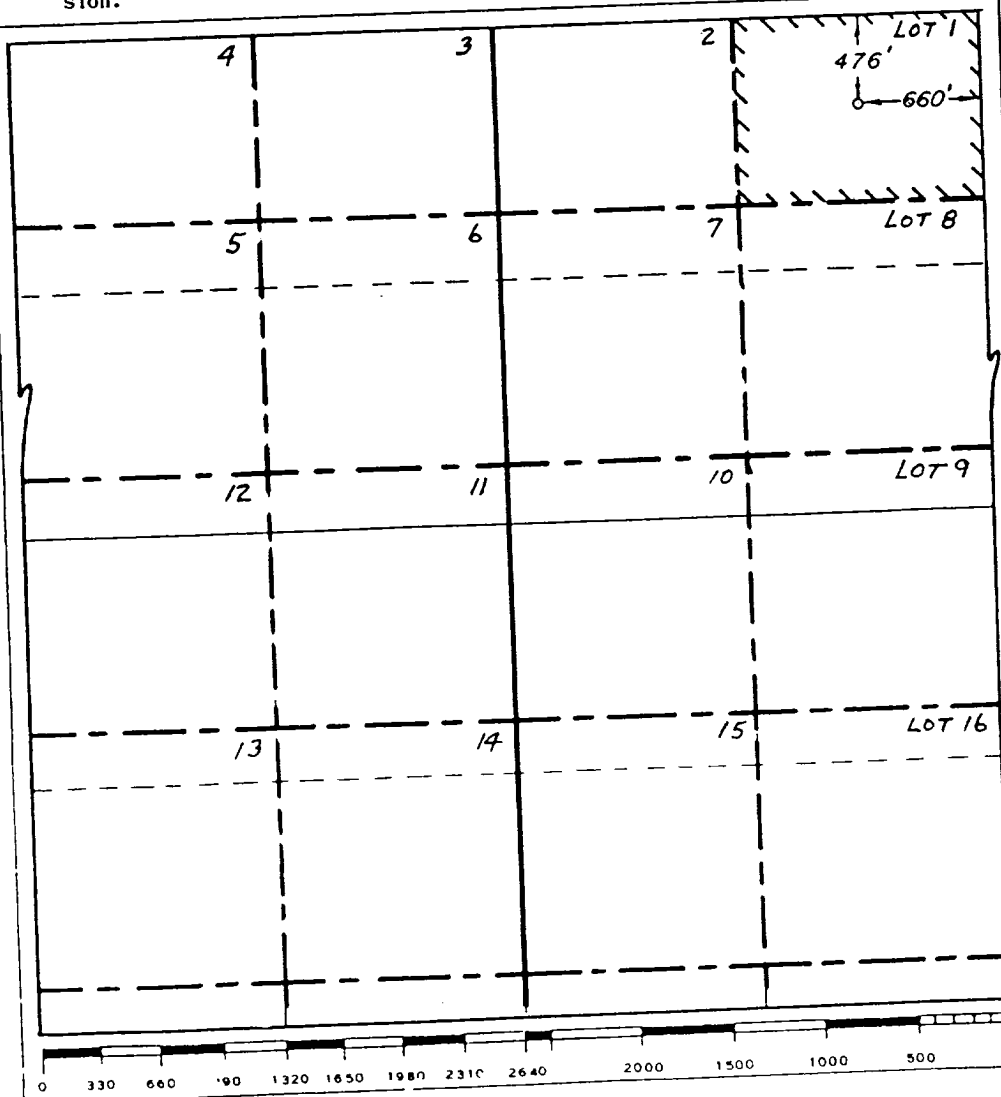
2. If more than one lease is dedicated to the well, outline each and identify the ownership thereof (both as to working interest and royalty). SINGLE LEASE

3. If more than one lease of different ownership is dedicated to the well, have the interests of all owners been consolidated by communitization, unitization, force-pooling, etc?

☐ Yes ☐ No If answer is "yes," type of consolidation Unitization

If answer is "no," list the owners and tract descriptions which have actually been consolidated. (Use reverse side of this form if necessary.)

No allowable will be assigned to the well until all interests have been consolidated (by communitization, unitization, forced-pooling, or otherwise) or until a non-standard unit, eliminating such interests, has been approved by the Commission.



CERTIFICATION

I hereby certify that the information contained herein is true and complete to the best of my knowledge and belief.

*Jerry W. Long*  
Name  
**JERRY W. LONG**

Position  
**Agent**

Company  
**MONSANTO OIL COMPANY**

Date  
**December 19, 1983**

I hereby certify that the well location shown on this plat was plotted from field notes of actual surveys made by me or under my supervision, and that the same is true and correct to the best of my knowledge and belief.

**DECEMBER 9, 1983**

Date Surveyed  
**RICHARD B. DUNIVEN**

Registered Professional Engineer  
and/or Land Surveyor

*Richard B. Duniven*  
Certificate No.

**4882**

## SUPPLEMENTAL DRILLING DATA

MONSANTO OIL COMPANY  
No. 24 Burton Flat Deep Unit  
Lot 1, Sec. 2-21S-27E  
Eddy County, N.M.  
L-2766

The following items supplement the information on Form C-101.

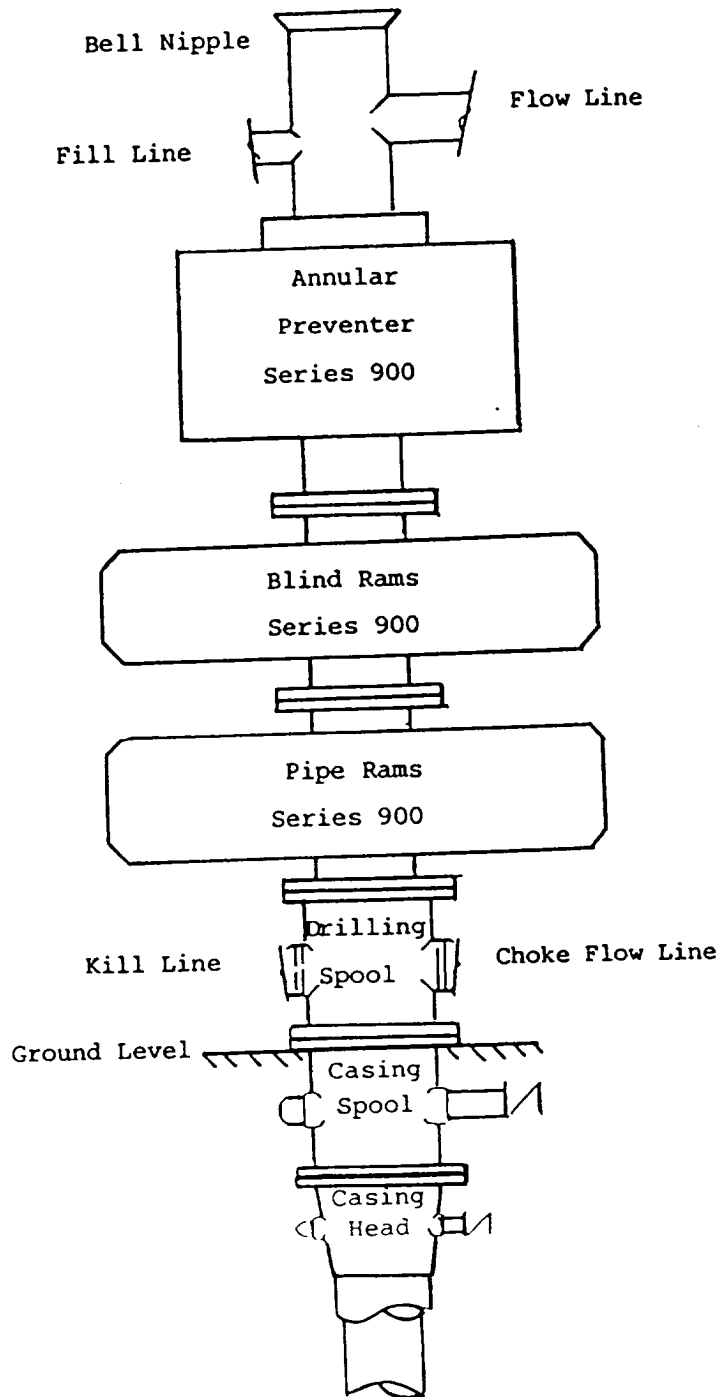
### 1. PROPOSED CASING PROGRAM:

- 13-3/8" Casing - H-40, 48# ST&C casing will be set to 500'± with cement circulated.
- 8-5/8" Casing - J-55, 24# ST&C casing will be set to 2500'± with cement circulated.
- 5-1/2" Casing - K-55, 15.5# LT&C casing will be set thru the producing zone and cemented with sufficient cement to isolate all oil, gas and water zones.

Intermediate and production casing strings will be tested to 1000 psi.

- ### 2. PRESSURE CONTROL EQUIPMENT:
- Pressure control equipment will include a 3000#WP blowout preventer stack with Series 900 annular preventer and Series 900 blind and pipe rams. The BOP stack will include a kill line and choke manifold tested to 2000 psi. BOP hydraulic controls will be operated at least daily. Mud weight will be maintained between 8.8 and 9.5#/Gal. to control bottom hole pressure. A kelly cock will be installed on the kelly joint and a full opening safety valve will be available on the rig floor.

MONSANTO OIL COMPANY  
No.24 Burton Flat Deep Unit  
Lot 1, Sec.2-21S-27E  
Eddy County, N.M.



BLOWOUT PREVENTER STACK  
Rams Operated Daily