

UNITED STATES
DEPARTMENT OF THE INTERIOR
BUREAU OF LAND MANAGEMENT

RECEIVED BY
SUBMIT IN TRIPLICATE*

(Other instructions on
reverse)

JAN 14 1984

Form approved.
Budget Bureau No. 1004-0136
Expires August 31, 1985

LEASE DESIGNATION AND SERIAL NO.

NM-0354232

IF INDIAN, ALLOTTEE OR TRIBE NAME

APPLICATION FOR PERMIT TO DRILL, DEEPEN, OR PLUG BACK

1a. TYPE OF WORK

DRILL ☒

DEEPEN ☐

PLUG BACK ☐

b. TYPE OF WELL

OIL
WELL ☐

GAS
WELL ☒

OTHER

SINGLE
ZONE ☒

MULTIPLE
ZONE ☐

2. NAME OF OPERATOR

TXO PRODUCTION CORP.

3. ADDRESS OF OPERATOR

900 WILCO BUILDING, MIDLAND, TEXAS 79701

4. LOCATION OF WELL (Report location clearly and in accordance with any State requirements.)*

At surface

1980' FNL & 1740' FEL OF SECTION 19

At proposed prod. zone

14. DISTANCE IN MILES AND DIRECTION FROM NEAREST TOWN OR POST OFFICE*

2 MILES NORTH OF CARLSBAD, NEW MEXICO

15. DISTANCE FROM PROPOSED*

LOCATION TO NEAREST
PROPERTY OR LEASE LINE, FT.
(Also to nearest drlg. unit line, if any)

660'

16. NO. OF ACRES IN LEASE

1840

17. NO. OF ACRES ASSIGNED
TO THIS WELL

320

18. DISTANCE FROM PROPOSED LOCATION*

TO NEAREST WELL, DRILLING, COMPLETED,
OR APPLIED FOR, ON THIS LEASE, FT.

-

19. PROPOSED DEPTH

11,700'

20. ROTARY OR CABLE TOOLS

ROTARY

21. ELEVATIONS (Show whether DF, RT, GR, etc.)

3181.5 GL

22. APPROX. DATE WORK WILL START*

UPON APPROVAL

23. PROPOSED CASING AND CEMENTING PROGRAM

SIZE OF HOLE	SIZE OF CASING	WEIGHT PER FOOT	SETTING DEPTH	QUANTITY OF CEMENT
17-1/2"	13-3/8"	48#	500'	SUFFICIENT TO CIRCULATE
12-1/4"	8-5/8"	24# & 32#	2700'	SUFFICIENT TO CIRCULATE
7-7/8"	4-1/2"	11.6#	11,700	500 SACKS

PAY ZONES WILL BE PERFORATED AND STIMULATED AS NECESSARY.

SEE ATTACHED FOR: SUPPLEMENTAL DRILLING DATA
BOP SKETCH
SURFACE USE AND OPERATIONS PLAN
OPERATOR-LAND OWNER AGREEMENT

THIS UNORTHOXOX LOCATION APPROVED BY ADMINISTRATIVE ORDER NSL 1781.

GAS IS NOT DEDICATED.

IN ABOVE SPACE DESCRIBE PROPOSED PROGRAM: If proposal is to deepen or plug back, give data on present productive zone and proposed new productive zone. If proposal is to drill or deepen directionally, give pertinent data on subsurface locations and measured and true vertical depths. Give blowout preventer program, if any.

24.

SIGNED

Arthur R. Brown

TITLE

Agent

DATE

February 3, 1984

(This space for Federal or State office use)

PERMIT NO.

APPROVAL DATE

District Manager

APPROVED BY

*Orig. Sgd. Earl R. Cunningham

TITLE

DATE

FEB 14 1984

CONDITIONS OF APPROVAL, IF ANY:

This Approval does not constitute
authority to communitize,

*See Instructions On Reverse Side

APPROVAL SUBJECT TO
GENERAL REQUIREMENTS AND
SPECIAL STIPULATIONS

ATTACHED

NEW MEXICO OIL CONSERVATION COMMISSION
WELL LOCATION AND ACREAGE DEDICATION PLAT

Form O-101
Supersedes O-101
Effective 10/1/81

All distances must be from the outer boundaries of the Section

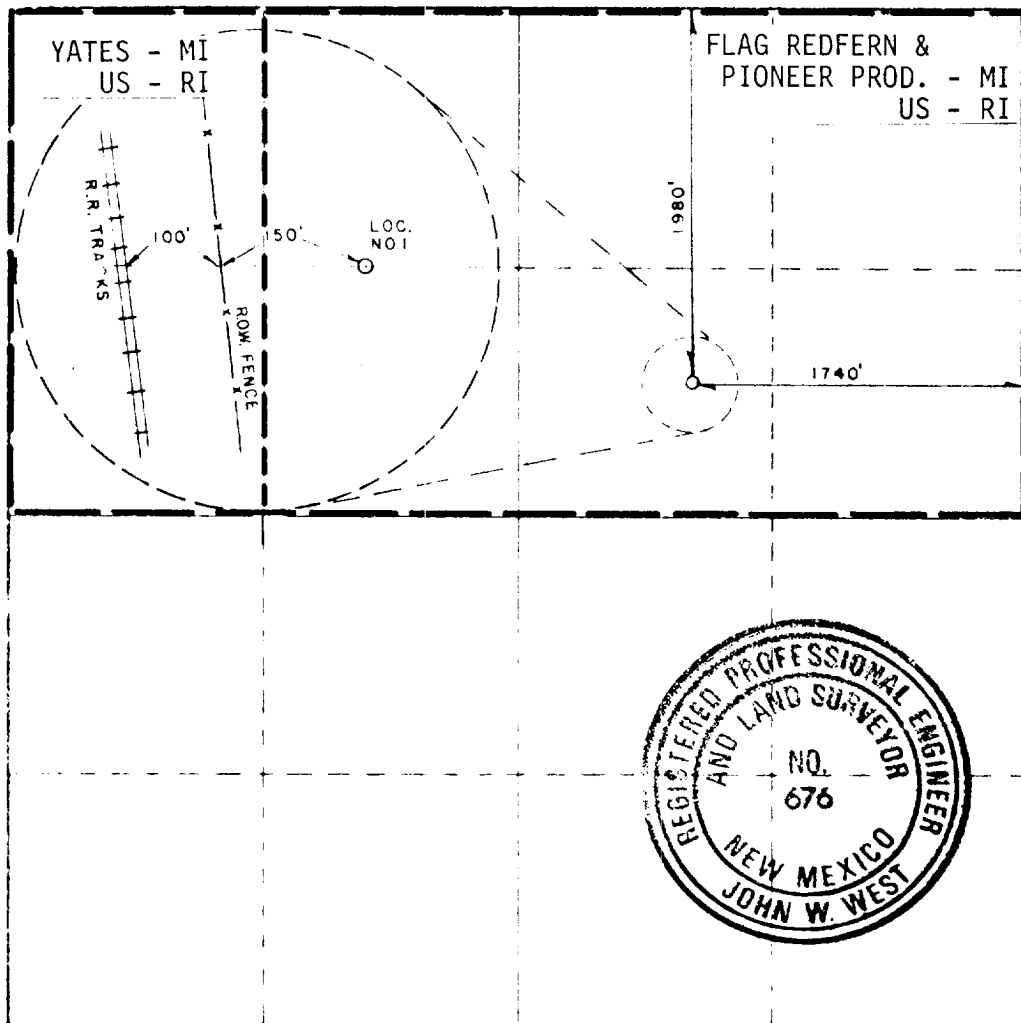
TXO PRODUCTION CO.			PIONEER FEDERAL COM		
Section G	Section 19	Township 21S	Range 27E	County EDDY	Acres 1
Well Location of Well:					
1980		NORTH		1740	
feet from the		line and		feet from the	
3181.5		MORROW		UNDES, CATCLAW DRAW MORROW	
				320	

- Outline the acreage dedicated to the subject well by colored pencil or hachure marks on the plat below.
- If more than one lease is dedicated to the well, outline each and identify the ownership thereof (both as to working interest and royalty).
- If more than one lease of different ownership is dedicated to the well, have the interests of all owners been consolidated by communitization, unitization, force-pooling, etc?

☐ Yes ☒ No If answer is "yes," type of consolidation TO BE COMMUNITIZED

If answer is "no," list the owners and tract descriptions which have actually been consolidated. (Use reverse side of this form if necessary.)

No allowable will be assigned to the well until all interests have been consolidated (by communitization, unitization, force-pooling, or otherwise) or until a non-standard unit, eliminating such interests, has been approved by the Commission.



CERTIFICATION

I hereby certify that the information contained herein is true and complete to the best of my knowledge and belief.

Arthur R. Brown
Arthur R. Brown

Agent

Company

TXO PRODUCTION CORP.

Date

FEBRUARY 3, 1984

I hereby certify that the well location shown on this plat was plotted from field notes of actual surveys made by me or under my supervision and that the same is true and correct to the best of my knowledge and belief.

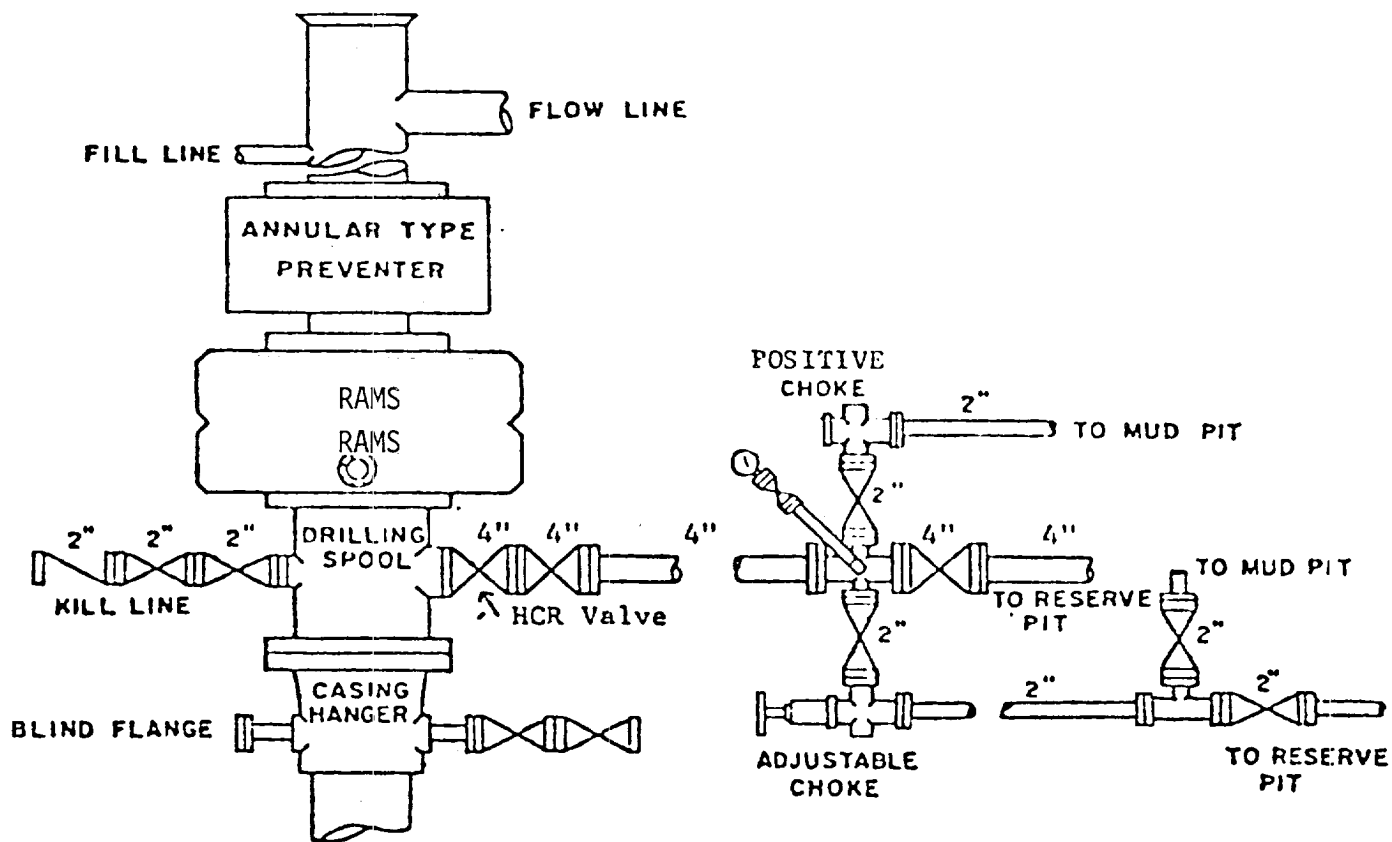
Date Surveyed

11/29/83

Registered Professional Engineer and Land Surveyor

John W. West

Certificate No. JOHN W. WEST, 676
RONALD J. EIDSON, 3239



BOP STACK

3000 PSI WORKING PRESSURE

BOP ARRANGEMENT

SUPPLEMENTAL DRILLING DATA

TXO PRODUCTION CORP.
WELL NO. 1 PIONEER FEDERAL COM

1. SURFACE FORMATION: Rustler

2. ESTIMATED TOPS OF GEOLOGIC MARKERS:

Yates	500
Delaware	2500
Bone Springs	5000
Wolfcamp	8800
Canyon	9800
Strawn	10,150
Atoka	10,700
Morrow	11,000

3. ANTICIPATED POSSIBLE HYDROCARBON BEARING ZONES:

Morrow	Gas
--------	-----

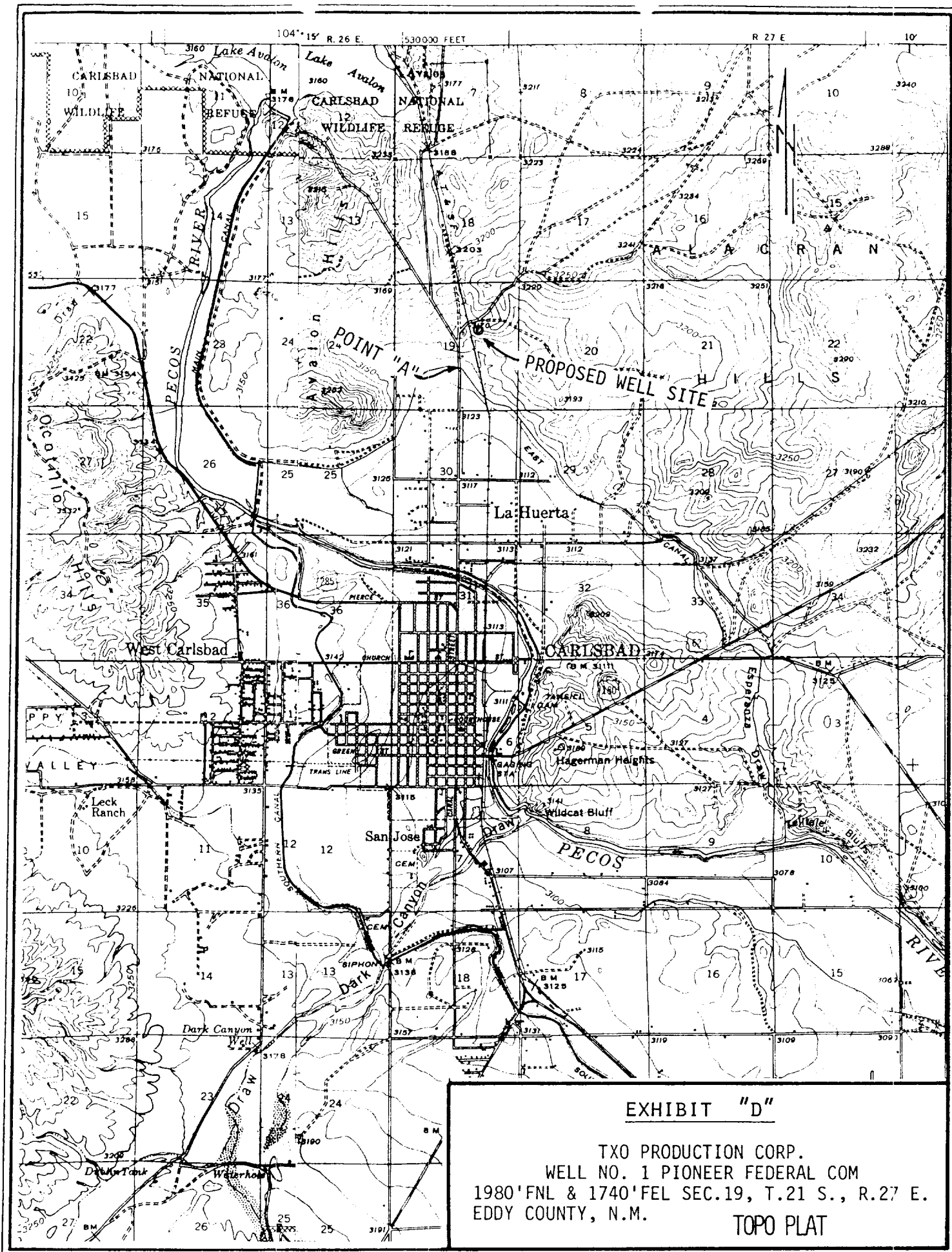
4. PROPOSED CASING AND CEMENTING PROGRAM:

CASING SIZE	SETTING DEPTH		WEIGHT	GRADE	JOINT
	FROM	TO			
13-3/8"	0	500'	48#	H-40	STC
8-5/8"	0	2500'	24#	K-55	STC
	2500'	2700'	32#	K-55	STC
4-1/2"	0	1000'	11.6#	N-80	BUTT
	1000'	11,000'	11.6#	N-80	LTC
	11,000'	11,700'	11.6#	S-95	LTC

13-3/8" casing will be cemented with sufficient Light cement, tailed-in with 200 sacks of Class "C", to circulate.

8-5/8" casing will be cemented with sufficient Light cement, tailed-in with 200 sacks of Class "C", to circulate.

4-1/2" casing will be cemented with approximately 500 sacks.



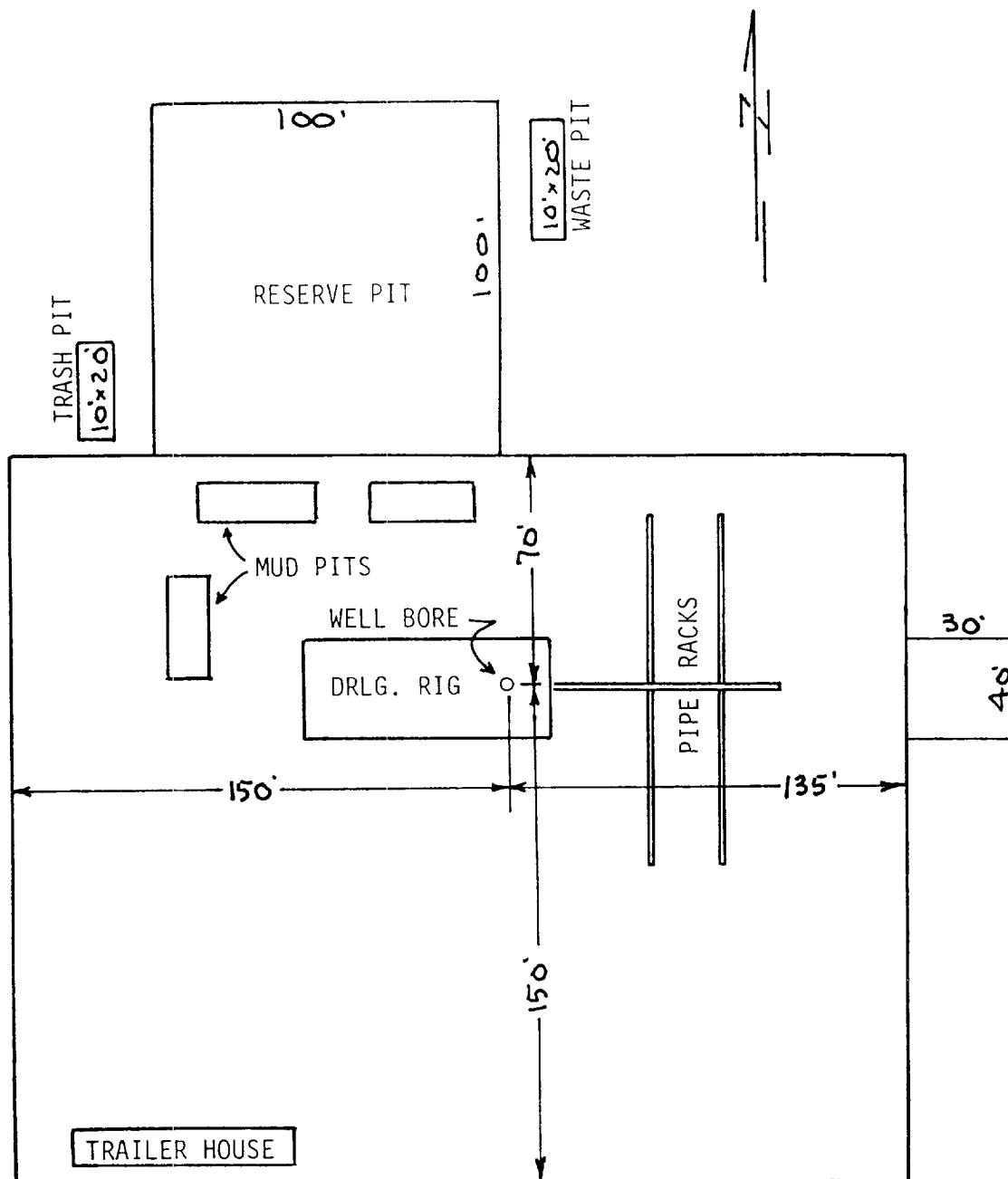


EXHIBIT "C"

TXO PRODUCTION CORP.
WELL NO. 1 PIONEER FEDERAL COM
DRILLING RIG LAYOUT
SCALE: None