

30-015-24818

5. LEASE DESIGNATION AND SERIAL NO.
NM 0442882

6. IF INDIAN, ALLOTTEE OR TRIBE NAME

7. UNIT AGREEMENT NAME
Burton Flat Deep Unit
No. 14-08-0001-12391

8. FARM OR LEASE NAME
Burton Flat Deep Unit

9. WELL NO.
33

10. FIELD AND POOL, OR WILDCAT
Wildcat-*Long Spring*

11. SEC., T., R., M., OR BLK.
AND SURVEY OR AREA
Sec. 35-20S-28E

12. COUNTY OR PARISH
Eddy

13. STATE
N.M.

14. DISTANCE IN MILES AND DIRECTION FROM NEAREST TOWN OR POST OFFICE*
Approximately 8 miles northeast of Carlsbad, N.M.

15. DISTANCE FROM PROPOSED*
LOCATION TO NEAREST
PROPERTY OR LEASE LINE, FT.
(Also to nearest drlg. unit line, if any)
330'

16. NO. OF ACRES IN LEASE
400

17. NO. OF ACRES ASSIGNED
TO THIS WELL
40

18. DISTANCE FROM PROPOSED LOCATION*
TO NEAREST WELL, DRILLING COMPLETED,
OR APPLIED FOR, ON THIS LEASE, FT.
1320'

19. PROPOSED DEPTH
5700'

20. ROTARY OR CABLE TOOLS
Rotary

21. ELEVATIONS (Show whether DF, RT, GR, etc.)
3197' GL

22. APPROX. DATE WORK WILL START*
As soon as possible

PROPOSED CASING AND CEMENTING PROGRAM					
SIZE OF HOLE	SIZE OF CASING	WEIGHT PER FOOT	SETTING DEPTH	QUANTITY OF CEMENT	
17-1/2"	13-3/8" H-40	48.0# ST&C	600'±	500 sx Circulated	
11"	8-5/8" J-55	24.0# ST&C	2500'±	700 sx Circulated	
7-7/8"	5-1/2" K-55	15.5# LT&C	5700'±	750 sx Sufficient to isolate all water, oil and gas zones.	

Propose to drill to approximately 5700' to test Bone Spring and intermediate formations.

See attached "Supplemental Data" for casing program and pressure control details.

If commercial production is indicated, the well will be completed in the deepest formation, by cementing production casing, perforating and stimulating. Run 2-7/8" tubing and test well.

IN ABOVE SPACE DESCRIBE PROPOSED PROGRAM: If proposal is to deepen or plug back, give data on present productive zone and proposed new productive zone. If proposal is to drill or deepen directionally, give pertinent data on subsurface locations and measured and true vertical depths. Give blowout preventer program, if any.

24. SIGNED *Jerry H. Long* TITLE Agent DATE March 5, 1984

JERRY W. LONG

(This space for Federal or State office use)

PERMIT NO. APPROVAL DATE

APPROVED BY 'Orig. Sgd.' Earl R. Cunningham TITLE District Manager

CONDITIONS OF APPROVAL, IF ANY:

Post. & R.
JE-107/BP
3-30-84

DATE MAR 26 1984
APPROVAL SUBJECT TO
GENERAL REQUIREMENTS AND
SPECIAL STIPULATIONS
ATTACHED

NEW MEXICO OIL CONSERVATION COMMISSION
WELL LOCATION AND ACREAGE DEDICATION PLAT

Form O-100
Supersedes C-128
Effective 1-1-85

All distances must be from the outer boundaries of the Section

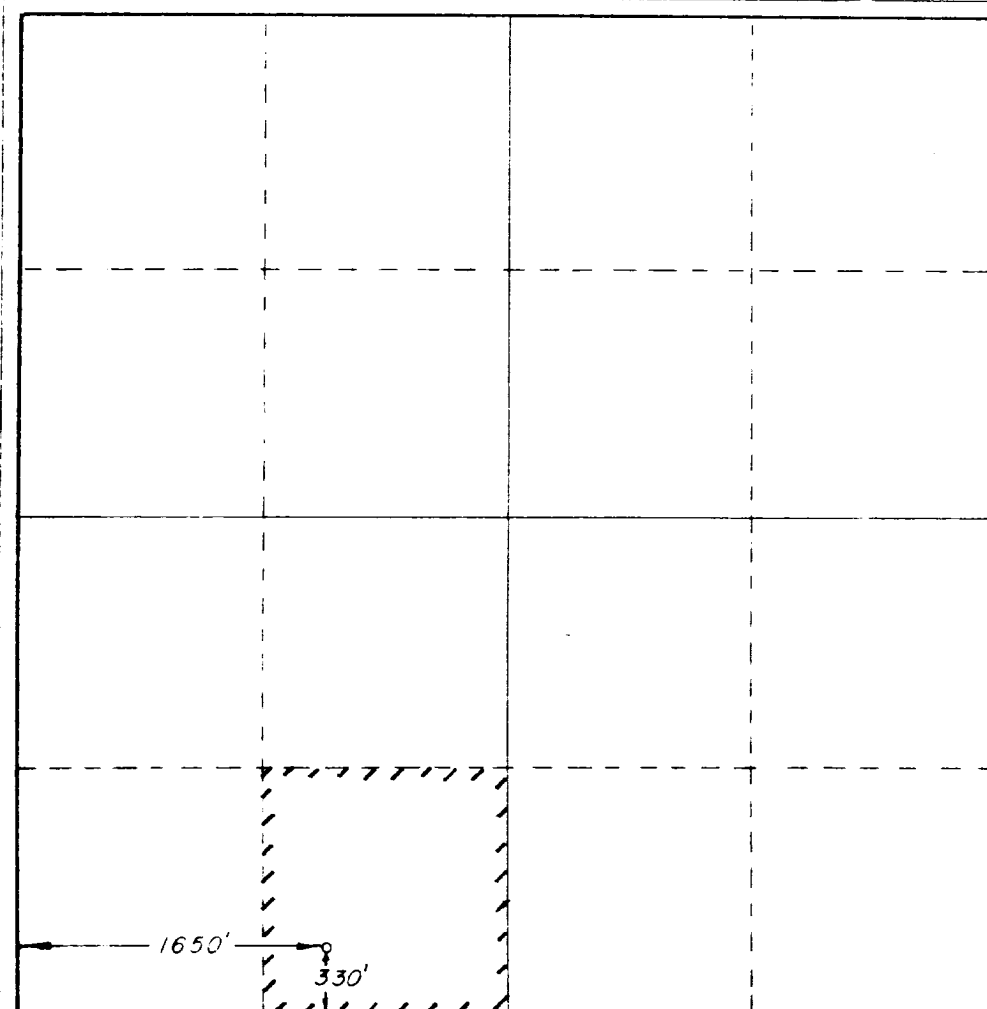
MONSANTO		COMPANY		BURTON FLAT UNIT		#33	
N	35	20-S	28-E	EDDY			
330'		SOUTH		1650'		WEST	
3197'		Bone Spring		Wildcat		Dedicated Acreage: 40	

1. Outline the acreage dedicated to the subject well by colored pencil or hachure marks on the plat below.
2. If more than one lease is dedicated to the well, outline each and identify the ownership thereof (both as to working interest and royalty).
3. If more than one lease of different ownership is dedicated to the well, have the interests of all owners been consolidated by communitization, unitization, force-pooling, etc?

☒ Yes ☐ No If answer is "yes," type of consolidation Unitization

If answer is "no," list the owners and tract descriptions which have actually been consolidated. (Use reverse side of this form if necessary.)

No allowable will be assigned to the well until all interests have been consolidated (by communitization, unitization, forced-pooling, or otherwise) or until a non-standard unit, eliminating such interests, has been approved by the Commission.



CERTIFICATION

I hereby certify that the information contained herein is true and complete to the best of my knowledge and belief.

Jerry W. Long
JERRY W. LONG

Agent

MONSANTO OIL COMPANY

March 5, 1984

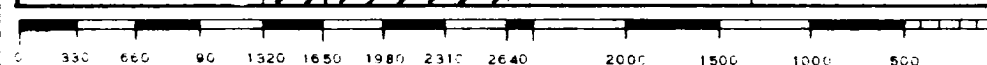
I hereby certify that the well location shown on this plat was plotted from field notes of actual surveys made by me or under my supervision and that the same is true and correct to the best of my knowledge and belief.

FEB 22 1984

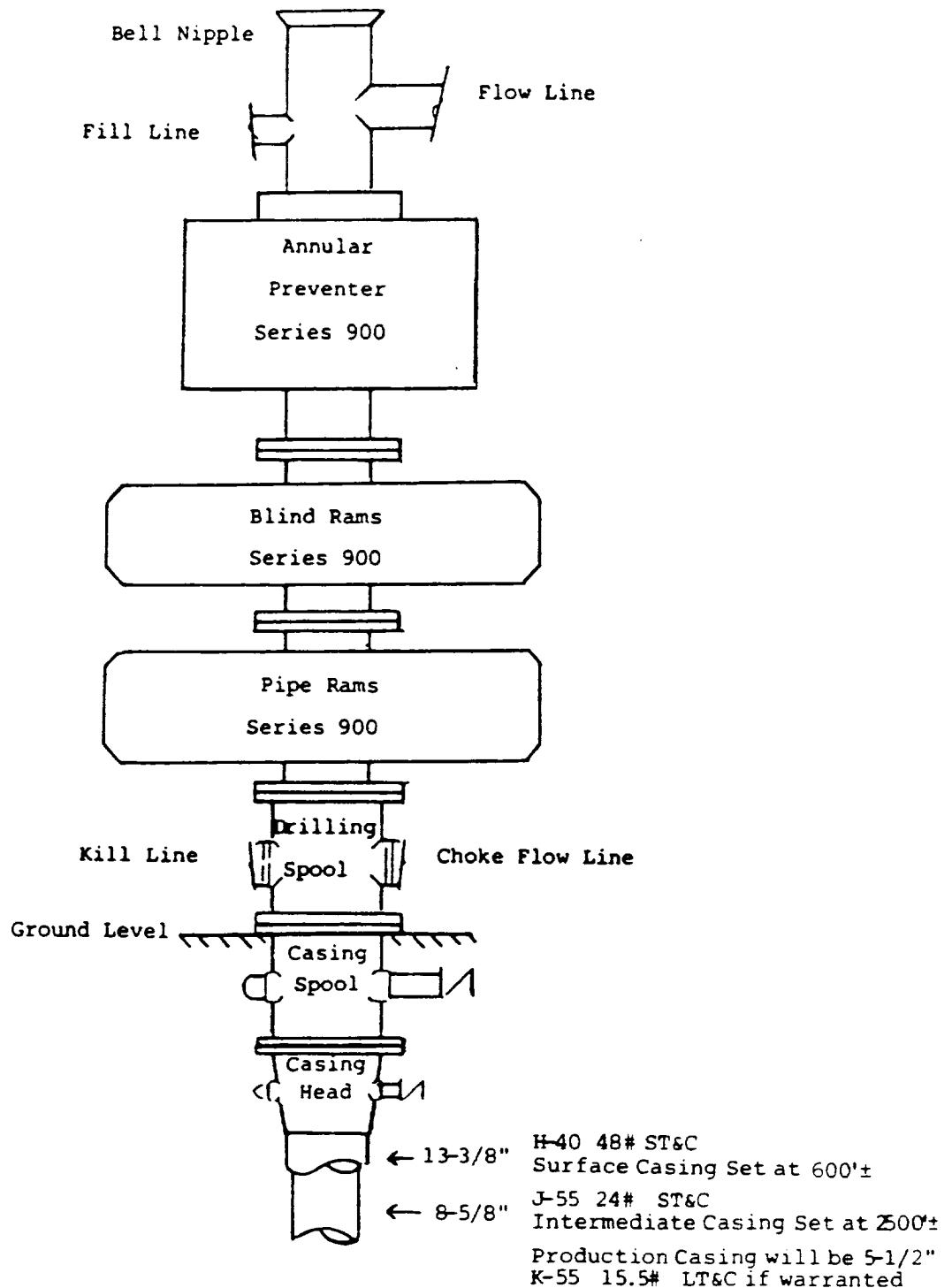
Date Surveyed
RICHARD B. DUNIVEN

Registered Professional Engineer and/or Land Surveyor

Richard B. Duniven
Certificate No. 4882



MONSANTO OIL COMPANY
 No.33 Burton Flat Deep Unit
 SE $\frac{1}{4}$ SW $\frac{1}{4}$ Sec.35-20S-28E
 Eddy County, N.M.



THE BLOWOUT PREVENTER STACK

3000 Psi Working Pressure

EXHIBIT D

SUPPLEMENTAL DRILLING DATA

MONSANTO OIL COMPANY
No.33 Burton Flat Deep Unit
SE $\frac{1}{4}$ SW $\frac{1}{4}$ Sec.35-20S-28E
Eddy County, N.M.

NM 0442882

The following items supplement Form 9-331C in accordance with Onshore Oil and Gas Order No.1:

1. SURFACE FORMATION: Recent (Aeolian)

2. ESTIMATED TOPS OF GEOLOGIC MARKERS:

Rustler	100'	Brushy Canyon	3995'
Yates	1150'	"F2" Marker	4205'
Cherry Canyon	2785'	Bone Spring	5375'
"D" Marker	3915'	Bone Spring Pay	5505'

3. ESTIMATED DEPTHS TO WATER, OIL OR GAS FORMATIONS:

Fresh Water - Surface to about 200'
Oil and Gas - 2785' to Total Depth of 5700'

4. PROPOSED CASING PROGRAM:

13-3/8" Casing - H-40, 48# ST&C casing will be set to 600' with cement circulated.

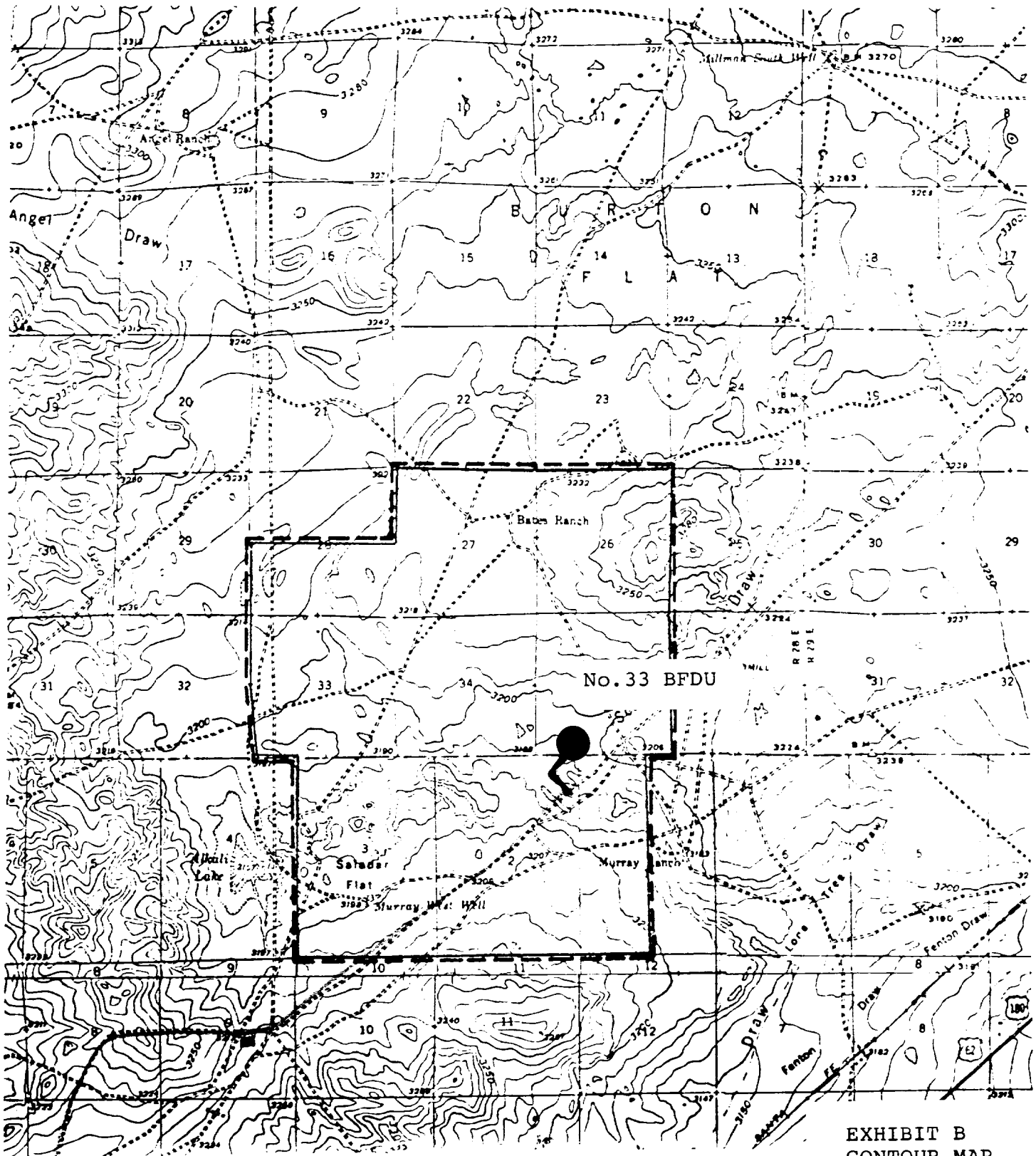
8-5/8" Casing - J-55, 24# ST&C casing will be set to 2500'± with cement circulated.

5-1/2" Casing - K-55, 15.5# LT&C casing will be set thru the producing zone and cemented to isolate all oil, gas and water zones.

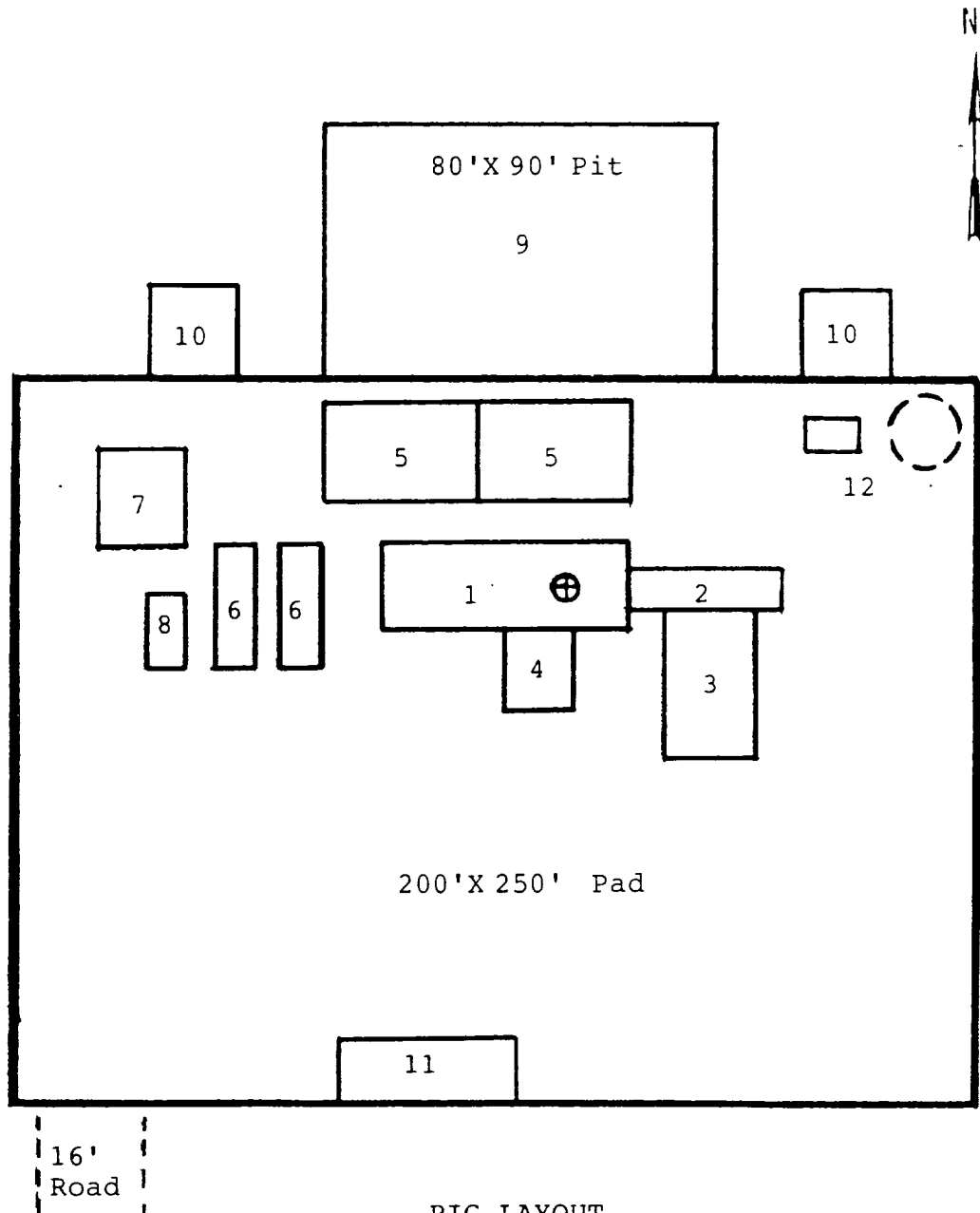
Intermediate and production casing strings will be tested to 1000 psi.

5. PRESSURE CONTROL EQUIPMENT: Pressure control equipment will include a 3000#WP blowout preventer stack with Series 900 annular preventer and Series 900 blind and pipe rams. The BOP stack will include a kill line and choke manifold tested to 2000 psi. BOP hydraulic controls will be operated at least daily.

MONSANTO OIL COMPANY
No.33 Burton Flat Deep Unit
SE¼SW¼ Sec.35-20S-28E
Eddy County, N.M.



MONSANTO OIL COMPANY
No.33 Burton Flat Deep Unit
SE¼SW¼ Sec.35-20S-28E
Eddy County, N.M.



RIG LAYOUT

- | | |
|-----------------|---------------------------|
| 1. Substructure | 7. Water Tank |
| 2. Catwalk | 8. Light Plant |
| 3. Pipe Rack | 9. Reserve Pit |
| 4. Doghouse | 10. Trash Pit |
| 5. Mud Pits | 11. Trailer House |
| 6. Mud Pumps | 12. Production Facilities |