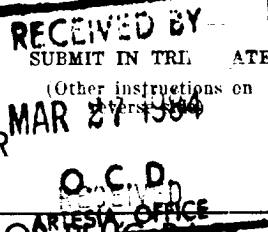


UNITED STATES
DEPARTMENT OF THE INTERIOR
GEOLOGICAL SURVEYForm approved.
Budget Bureau No. 42-R1425.

30-015-24820

5. LEASE DESIGNATION AND SERIAL NO.

NM 0442882

6. IF INDIAN, ALLOTTEE OR TRIBE NAME

7. UNIT AGREEMENT NAME

Burton Flat Deep Unit
No. 14-08-0001-12391

8. FARM OR LEASE NAME

Burton Flat Deep Unit

9. WELL NO.

32

10. FIELD AND POOL, OR WILDCAT

Wildcat - Bone Spring

11. SEC., T., R., M., OR BLK.
AND SURVEY OR AREA

Sec. 35-20S-28E

12. COUNTY OR PARISH 13. STATE

Eddy

N.M.

1a. TYPE OF WORK

DRILL ☒DEEPEN ☐PLUG BACK ☐

b. TYPE OF WELL

OIL
WELL ☒GAS
WELL ☐OTHER ☐SINGLE
ZONE ☒MULTIPLE
ZONE ☐

2. NAME OF OPERATOR

MONSANTO OIL COMPANY

3. ADDRESS OF OPERATOR

1300 One First City Center
500 West Texas, Midland, Texas 79701

4. LOCATION OF WELL (Report location clearly and in accordance with any State requirements.)*

At surface

330' FSL 330' FWL Sec. 35-20S-28E

At proposed prod. zone

Same

14. DISTANCE IN MILES AND DIRECTION FROM NEAREST TOWN OR POST OFFICE*

Approximately 8 miles northeast of Carlsbad, N.M.

15. DISTANCE FROM PROPOSED*

LOCATION TO NEAREST
PROPERTY OR LEASE LINE, FT.
(Also to nearest drlg. unit line, if any)

330'

16. NO. OF ACRES IN LEASE

400

17. NO. OF ACRES ASSIGNED
TO THIS WELL

40

18. DISTANCE FROM PROPOSED LOCATION*

TO NEAREST WELL, DRILLING, COMPLETED,
OR APPLIED FOR, ON THIS LEASE, FT.

1320'

19. PROPOSED DEPTH

5700'

20. ROTARY OR CABLE TOOLS

Rotary

21. ELEVATIONS (Show whether DF, RT, GR, etc.)

3186' GL

22. APPROX. DATE WORK WILL START*

As soon as possible

23. PROPOSED CASING AND CEMENTING PROGRAM

SIZE OF HOLE	SIZE OF CASING	WEIGHT PER FOOT	SETTING DEPTH	QUANTITY OF CEMENT
17-1/2"	13-3/8" H-40	48.0# ST&C	600'±	500 sx Circulated
11"	8-5/8" J-55	24.0# ST&C	2500'±	700 sx Circulated
7-7/8"	5-1/2" K-55	15.5# LT&C	5700'±	750 sx Sufficient to isolate all water, oil and gas zones.

Propose to drill to approximately 5700' to test Bone Spring and intermediate formations.

See attached "Supplemental Data" for casing program and pressure control details.

If commercial production is indicated, the well will be completed in the deepest formation, by cementing production casing, perforating and stimulating. Run 2-7/8" tubing and test well.

IN ABOVE SPACE DESCRIBE PROPOSED PROGRAM: If proposal is to deepen or plug back, give data on present productive zone and proposed new productive zone. If proposal is to drill or deepen directionally, give pertinent data on subsurface locations and measured and true vertical depths. Give blowout preventer program, if any.

24.

SIGNED

JERRY W. LONG

TITLE Agent

DATE March 5, 1984

(This space for Federal or State office use)

PERMIT NO.

APPROVAL DATE

APPROVED BY 'Orig. Sgd.' Earl R. Cunningham

TITLE

DATE

MAR 28 1984

CONDITIONS OF APPROVAL, IF ANY:

APPROVAL SUBJECT TO
GENERAL REQUIREMENTS AND
SPECIAL STIPULATIONS
ATTACHED

Post a well
18-1-7-7/8" BB
3-31-84

N. MEXICO OIL CONSERVATION COMMISS.
WELL LOCATION AND ACREAGE DEDICATION PLAT

Form O-128
Supersedes O-128
Effective 1-1-65

All distances must be from the outer boundaries of the Section

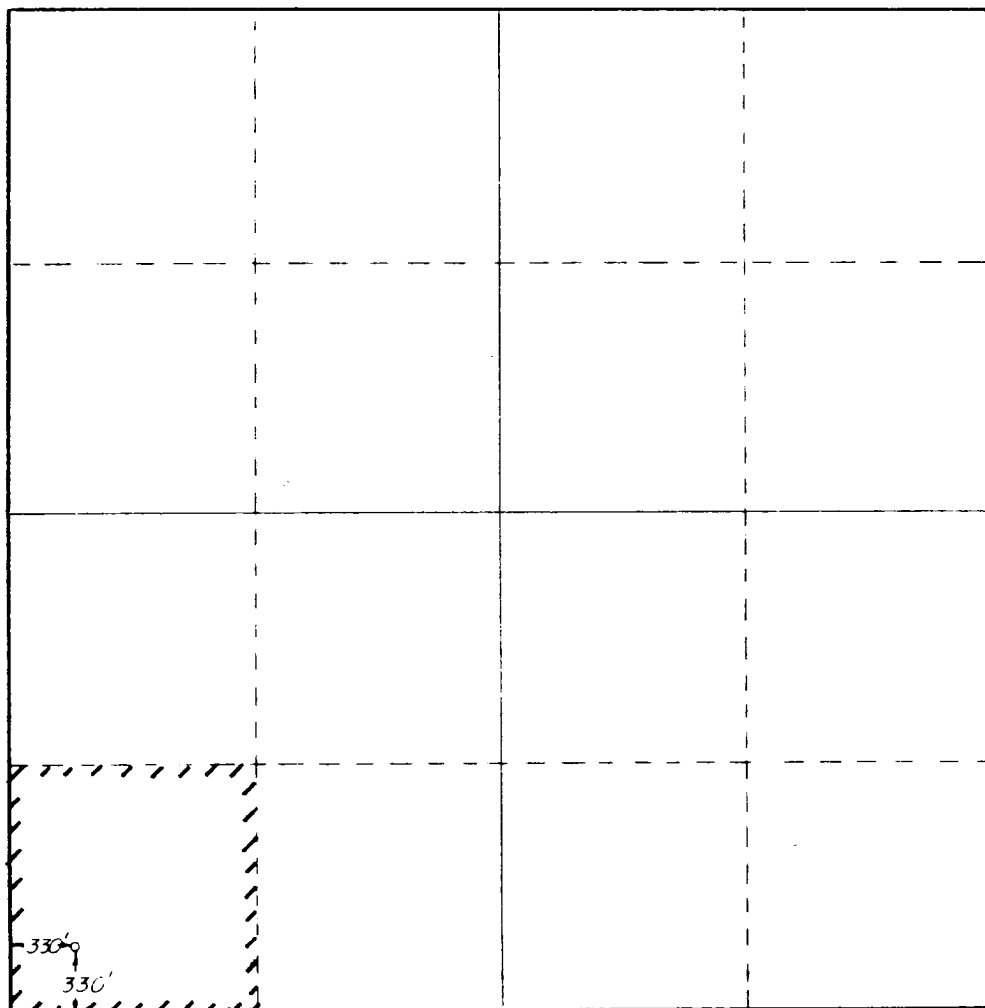
MONSANTO COMPANY		BURTON FLAT UNIT		Well No. #32
M	35	20-S	28-E	EDDY
330' SOUTH 330' WEST				
3186'	Bone Spring	Wildcat	40 Acres	

1. Outline the acreage dedicated to the subject well by colored pencil or hatchure marks on the plat below.
2. If more than one lease is dedicated to the well, outline each and identify the ownership thereof (both as to working interest and royalty).
3. If more than one lease of different ownership is dedicated to the well, have the interests of all owners been consolidated by communitization, unitization, force-pooling, etc?

☒ Yes ☐ No If answer is "yes," type of consolidation Unitization

If answer is "no," list the owners and tract descriptions which have actually been consolidated. (Use reverse side of this form if necessary.)

No allowable will be assigned to the well until all interests have been consolidated (by communitization, unitization, forced-pooling, or otherwise) or until a non-standard unit, eliminating such interests, has been approved by the Commission.



CERTIFICATION

I hereby certify that the information contained herein is true and complete to the best of my knowledge and belief.

Jerry W. Long
JERRY W. LONG

Position
Agent

Company
MONSANTO OIL COMPANY

Date
March 5, 1984

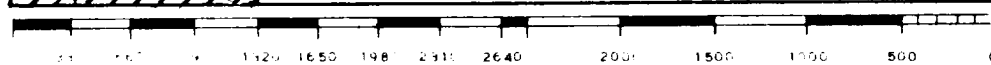
I hereby certify that the well location shown on this plat was plotted from field notes of actual surveys made by me or under my supervision, and that the same is true and correct to the best of my knowledge and belief.

FEB. 22, 1984

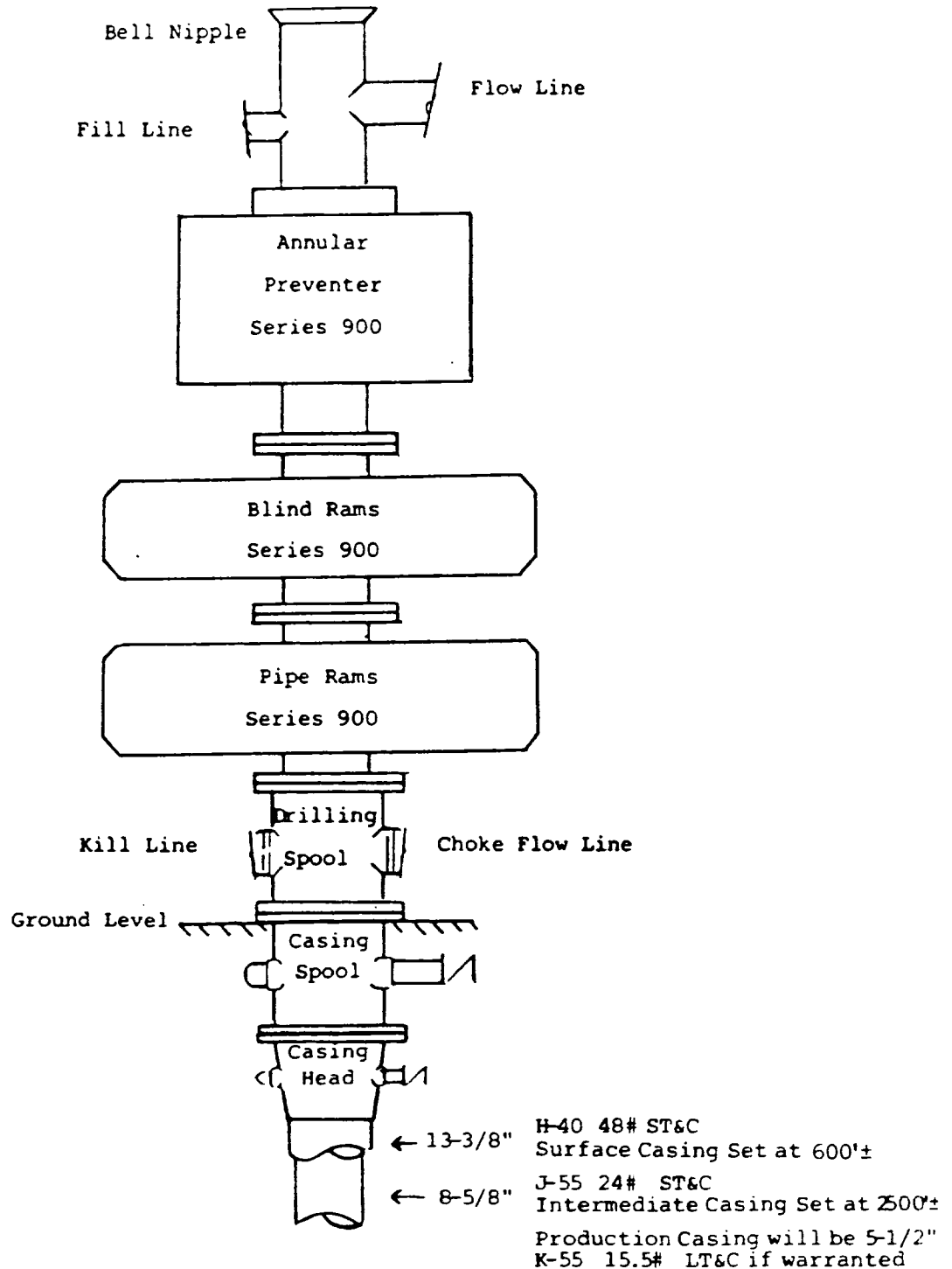
Date Surveyed
RICHARD B. DUNIVEN

Registered Professional Engineer
in Oil and Land Surveying

Richard B. Duniven
Certificate No. 4882



MONSANTO OIL COMPANY
 No.32 Burton Flat Deep Unit
 SW $\frac{1}{4}$ SW $\frac{1}{4}$ Sec.35-20S-28E
 Eddy County, N.M.



THE BLOWOUT PREVENTER STACK
 3000 Psi Working Pressure

EXHIBIT D

SUPPLEMENTAL DRILLING DATA

MONSANTO OIL COMPANY
No.32 Burton Flat Deep Unit
SW $\frac{1}{4}$ SW $\frac{1}{4}$ Sec.35-20S-28E
Eddy County, N.M.

NM 0442882

The following items supplement Form 9-331C in accordance with Onshore Oil and Gas Order No.1:

1. SURFACE FORMATION: Recent (Aeolian)

2. ESTIMATED TOPS OF GEOLOGIC MARKERS:

Rustler	100'	Brushy Canyon	3975'
Yates	1150'	"F2" Marker	4185'
Cherry Canyon	2765'	Bone Spring	5315'
"D" Marker	3895'	Bone Spring Pay	5465'

3. ESTIMATED DEPTHS TO WATER, OIL OR GAS FORMATIONS:

Fresh Water - Surface to about 200'
Oil and Gas - 2765' to Total Depth of 5700'

4. PROPOSED CASING PROGRAM:

13-3/8" Casing - H-40, 48# ST&C casing will be set to 600' with cement circulated.

8-5/8" Casing - J-55, 24# ST&C casing will be set to 2500'± with cement circulated.

5-1/2" Casing - K-55, 15.5# LT&C casing will be set thru the producing zone and cemented to isolate all oil, gas and water zones.

Intermediate and production casing strings will be tested to 1000 psi.

5. PRESSURE CONTROL EQUIPMENT: Pressure control equipment will include a 3000#WP blowout preventer stack with Series 900 annular preventer and Series 900 blind and pipe rams. The BOP stack will include a kill line and choke manifold tested to 2000 psi. BOP hydraulic controls will be operated at least daily.

MONSANTO OIL COMPANY
No.32 Burton Flat Deep Unit
SW $\frac{1}{4}$ SW $\frac{1}{4}$ Sec.35-20S-28E
Eddy County, N.M.

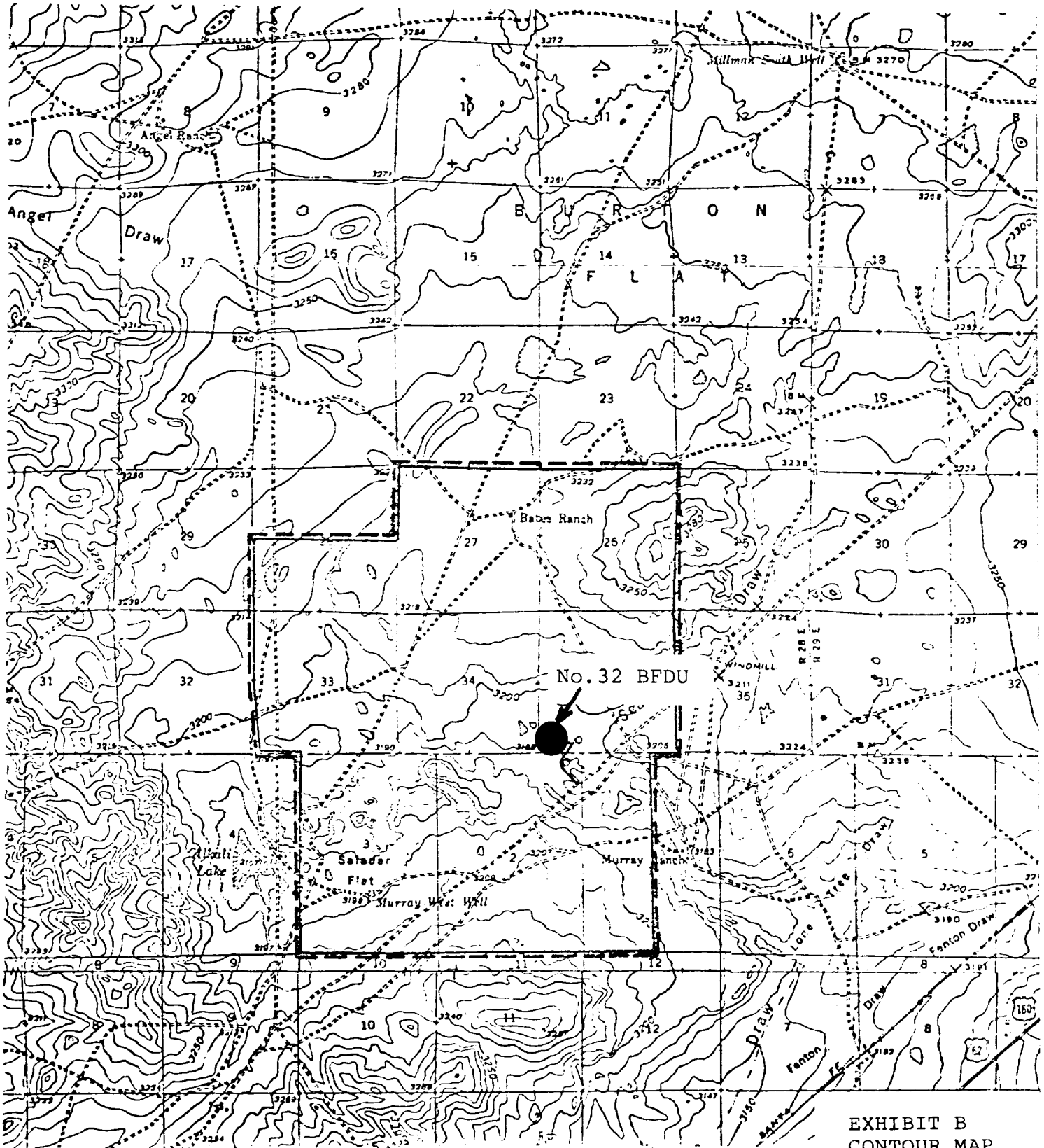
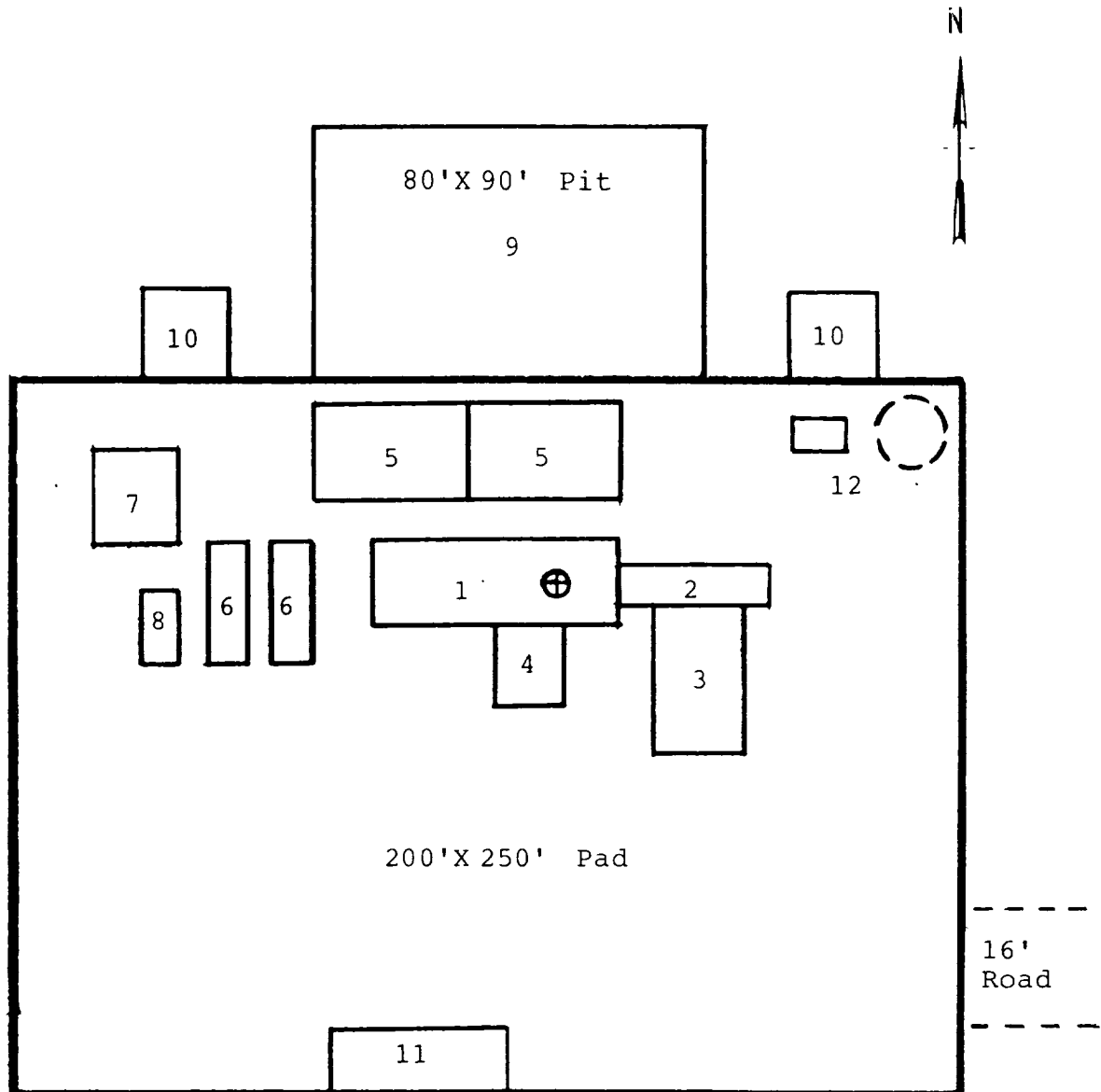


EXHIBIT B
CONTOUR MAP

MONSANTO OIL COMPANY
No.32 Burton Flat Deep Unit
SW $\frac{1}{4}$ SW $\frac{1}{4}$ Sec.35-20S-28E
Eddy County, N.M.



RIG LAYOUT

- | | |
|-----------------|---------------------------|
| 1. Substructure | 7. Water Tank |
| 2. Catwalk | 8. Light Plant |
| 3. Pipe Rack | 9. Reserve Pit |
| 4. Doghouse | 10. Trash Pit |
| 5. Mud Pits | 11. Trailer House |
| 6. Mud Pumps | 12. Production Facilities |