

RECEIVED BY
P. O. BOX 2088
MAR 26 1984
SANTA FE, NEW MEXICO 87501

30-015-24822

Form C-101
Revised 10-1-78

NO. OF COPIES RECEIVED	
DISTRIBUTION	
SANTA FE	<input checked="" type="checkbox"/>
FILE	<input checked="" type="checkbox"/>
U.S.G.S.	<input checked="" type="checkbox"/>
LAND OFFICE	<input checked="" type="checkbox"/>
OPERATOR	<input checked="" type="checkbox"/>

O. C. D.
ARTESIA, OFFICE

5A. Indicate Type of Lease STATE <input type="checkbox"/> FEE <input checked="" type="checkbox"/>
5. State Oil & Gas Lease No. --
7. Unit Agreement Name --
8. Farm or Lease Name Roy Renfro
9. Well No. 1
10. Field and Pool, or Wildcat Undesig. <i>Low Spring</i>
12. County Eddy

APPLICATION FOR PERMIT TO DRILL, DEEPEN, OR PLUG BACK

a. Type of Work
DRILL ☒ DEEPEN ☐ PLUG BACK ☐

b. Type of Well
OIL WELL ☒ GAS WELL ☐ OTHER ☐ SINGLE ZONE ☒ MULTIPLE ZONE ☐

c. Name of Operator
Exxon Corporation

d. Address of Operator
P. O. Box 1600, Midland, Texas 79702

e. Location of Well
UNIT LETTER Lot 14 LOCATED 1980 3300 FEET FROM THE West South LINE
1980 FEET FROM THE West LINE OF SEC. 1 TWP. 21S RGE. 27E NMPM

19. Proposed Depth 6100'	19A. Formation Bone Spring	20. Rotary or C.T. Rotary
21A. Kind & Status Plug. Bond Blanket	21B. Drilling Contractor Unknown	22. Approx. Date Work will start 2nd Quarter 1984

SIZE OF HOLE	SIZE OF CASING	WEIGHT PER FOOT	SETTING DEPTH	SACKS OF CEMENT	EST. TOP
26"	20"	94#	40'	25 sx Redimix	Surface
17 1/2"	13 3/8"	48#	600'	350 SX	Surface
11"	8 5/8"	24#	2500'	600 sx	Surface
7 7/8"	5 1/2"	14, 15.5, 17#	6100'	700 sx	Tie into int. csg.

Mud Program:
0-2800' FW 8.4 - 8.8#
2800-6100' Cut BW 8.8# - 9.5#

Type II-C, 2000 psi
BOPs will be used

APPROVAL VALID FOR 180 DAYS
9-27-84
UNLESS DRILLING UNDERWAY

ABOVE SPACE DESCRIBE PROPOSED PROGRAM: IF PROPOSAL IS TO DEEPEN OR PLUG BACK, GIVE DATA ON PRESENT PRODUCTIVE ZONE AND PROPOSED NEW PRODUCTION ZONE. GIVE BLOWOUT PREVENTER PROGRAM, IF ANY.

I hereby certify that the information above is true and complete to the best of my knowledge and belief.

Signed Melba Kripling Title Unit Head Date 3-21-84

(This space for State Use)

PROVED BY M. Williams TITLE OIL AND GAS INSPECTOR DATE MAR 27 1984

CONDITIONS OF APPROVAL, IF ANY:

8 5/8 casing

Post. & Rd.
RD-10-1/2 P.B. 2
3-30-84

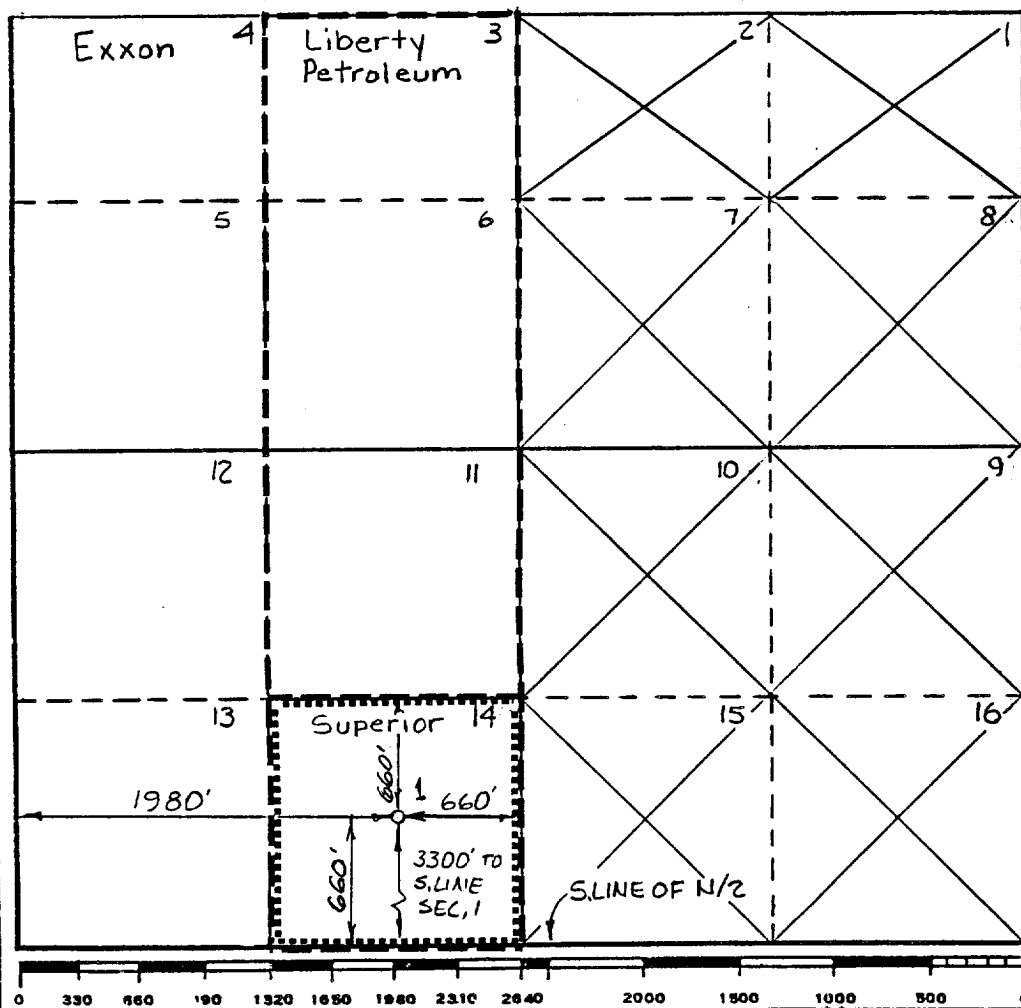
Operator Exxon Corporation			Lease ROY RENFROE		Well No. 1
Unit Letter LOT 14	Section 1	Township 21S	Range 27E	County EDDY	
Actual Footage Location of Well: 3300 feet from the SOUTH line and 1980 feet from the WEST line					
Ground Level Elev: 3196'	Producing Formation BONE SPRINGS	Pool UNDES. BONE SPRINGS	Dedicated Acreage: 40 Acres		

1. Outline the acreage dedicated to the subject well by colored pencil or hachure marks on the plat below.
2. If more than one lease is dedicated to the well, outline each and identify the ownership thereof (both as to working interest and royalty).
3. If more than one lease of different ownership is dedicated to the well, have the interests of all owners been consolidated by communitization, unitization, force-pooling, etc?

☐ Yes ☐ No If answer is "yes," type of consolidation _____

If answer is "no," list the owners and tract descriptions which have actually been consolidated. (Use reverse side of this form if necessary.) _____

No allowable will be assigned to the well until all interests have been consolidated (by communitization, unitization, forced-pooling, or otherwise) or until a non-standard unit, eliminating such interests, has been approved by the Commission.



CERTIFICATION

I hereby certify that the information contained herein is true and complete to the best of my knowledge and belief.

Name
Melba Kripling
Position
UNIT HEAD
Company
Exxon Corporation
Box 1600 Midland, Texas
Date
3-21-84

I hereby certify that the well location shown on this plat was obtained from field notes of actual surveys made by me or under my supervision and that the same is true and correct to the best of my knowledge and belief.

Date Surveyed
2-15-84

Registered Professional Engineer
and/or Land Surveyor

Certificate No.
6157

BLOWOUT PREVENTER SPECIFICATION
EQUIPMENT DESCRIPTION

TYPE II-C

All equipment should be at least 2000 psi WP or higher unless otherwise specified.

1. Bell nipple.
2. Hydril or Shaffer bag type preventer.
3. Ram type pressure operated blowout preventer with blind rams.
4. Flanged spool with one 4-inch and one 2-inch (minimum) outlet.
5. 2-inch (minimum) flanged plug or gate valve.
6. 2-inch by 2-inch by 2-inch (minimum) flanged tee.
7. 4-inch pressure operated gate valve.
8. 4-inch flanged gate or plug valve.
9. Ram type pressure operated blowout preventer with pipe rams.
10. Flanged type casing head with one side outlet (furnished by Exxon).
11. 2-inch threaded (or flanged) plug or gate valve (furnished by Exxon).
Flanged on 5000# WP, threaded on 3000# WP or less.
12. Needle valve (furnished by Exxon).
13. 2-inch nipple (furnished by Exxon).
14. Tapped bull plug (furnished by Exxon).
15. 4-inch flanged spacer spool.
16. 4-inch by 2-inch by 2-inch by 2-inch flanged cross.
17. 2-inch flanged plug or gate valve.
18. 2-inch flanged adjustable chokes.
19. 2-inch threaded flange.
20. 2-inch XXH nipple.
21. 2-inch forged steel 90° Ell.
22. Cameron (or equal.) threaded pressure gage.
23. Threaded flange.
35. 2-inch flanged tee.
36. 3-inch (minimum) hose. (Furnished by Exxon).
37. Trip tank. (Furnished by Exxon).
38. 2-inch flanged plug or gate valve.
39. 2-1/2-inch pipe, 300' to pit, anchored.
40. 2-1/2-inch SE valve.
41. 2-1/2-inch line to steel pit or separator.

NOTES:

1. Items 3, 4 and 9 may be replaced with double ram type preventer with side outlets between the rams.
2. The two valves next to the stack on the fill and kill line to be closed unless drill string is being pulled.
3. Kill line is for emergency use only. This connection shall not be used for filling.
4. Replacement pipe rams and blind rams shall be on location at all times.
5. Only type U, LWS and QRC ram type preventers with secondary seals are acceptable for 5000 psi WP and higher BOP stacks.
6. Type E ram-type BOP's with factory modified side outlets may be used on 3000 psi or lower WP BOP stacks.

MIDLAND DRILLING ORGANIZATION BLOWOUT PREVENTER SPECIFICATION TYPE II - C

