

UNITED STATES
DEPARTMENT OF THE INTERIOR
BUREAU OF LAND MANAGEMENT

NM OIL CONS. COMMISSION
Drawer 100
Artesia, N.M. 88210
SUBMIT IN TRI-STATE
on reverse side

50-015-24833
Form approved.
Budget Bureau No. 1004-0136
Expires August 31, 1985

APPLICATION FOR PERMIT TO DRILL, DEEPEN, OR PLUG BACK

1a. TYPE OF WORK

DRILL ☒

DEEPEN ☐

PLUG BACK ☐

b. TYPE OF WELL

OIL WELL ☒

GAS WELL ☐

OTHER

SINGLE ZONE ☒

MULTIPLE ZONE ☐

2. NAME OF OPERATOR

Liberty Oil & Gas Corporation

3. ADDRESS OF OPERATOR

1776 Woodstead Court, Suite 200, The Woodlands, Tx. 77380

4. LOCATION OF WELL (Report location clearly and in accordance with any State requirements.)*

At surface

1780' FSL & 1980' FEL NW/4 SE/4 Unit J

At proposed prod. zone

Same

14. DISTANCE IN MILES AND DIRECTION FROM NEAREST TOWN OR POST OFFICE*

7 miles northeast of Carlsbad, N.M.

15. DISTANCE FROM PROPOSED*

LOCATION TO NEAREST

PROPERTY OR LEASE LINE, FT.

(Also to nearest drlg. unit line, if any)

1780' S

18. DISTANCE FROM PROPOSED LOCATION*

TO NEAREST WELL, DRILLING, COMPLETED,
OR APPLIED FOR, ON THIS LEASE, FT.

200' N

16. NO. OF ACRES IN LEASE

640

19. PROPOSED DEPTH

5700'

17. NO. OF ACRES ASSIGNED

TO THIS WELL

40

20. ROTARY OR CABLE TOOLS

Rotary

21. ELEVATIONS (Show whether DF, RT, GR, etc.)

3262.2' GR

22. APPROX. DATE WORK WILL START*

April 2, 1984

23. PROPOSED CASING AND CEMENTING PROGRAM

SIZE OF HOLE	SIZE OF CASING	WEIGHT PER FOOT	SETTING DEPTH	QUANTITY OF CEMENT
17 1/2"	13 3/8"	48.0#	600' 400'	640 sx(Circulate)
12 1/4"	9 5/8"	36.0#	2900'	1125 sx(Circulate)
7 7/8"	5 1/2"	17.0#	T.D.	400 sx

Proposed plans are to drill through the Bone Spring formation and test Bone Spring and intermediate formations for possible commercial production of oil & gas.

Designation of Operator is filed under Doris Federal No. 1 well.

BOP sketch is attached.

RECEIVED

MAR 27 1984

OIL & GAS

ROSWEEL, NEW MEXICO

IN ABOVE SPACE DESCRIBE PROPOSED PROGRAM: If proposal is to deepen or plug back, give data on present productive zone and proposed new productive zone. If proposal is to drill or deepen directionally, give pertinent data on subsurface locations and measured and true vertical depths. Give blowout preventer program, if any.

24.

SIGNED

Jerry W. Franklin

TITLE

Agent

DATE

3/27/84

(This space for Federal or State office use)

PERMIT NO.

APPROVAL DATE

APPROVED BY

Orig. Sgd. Earl R. Cunningham

TITLE

District Manager

CONDITIONS OF APPROVAL, IF ANY:

DATE

APR 2 1984

APPROVAL SUBJECT TO
GENERAL REQUIREMENTS AND
SPECIAL STIPULATIONS

ATTACHED

*See Instructions On Reverse Side

**NEW MEXICO OIL CONSERVATION COMMISSION
WELL LOCATION AND ACREAGE DEDICATION PLAT**

Form C-102
Supersedes C-128
Effective 1-1-65

All distances must be from the outer boundaries of the Section

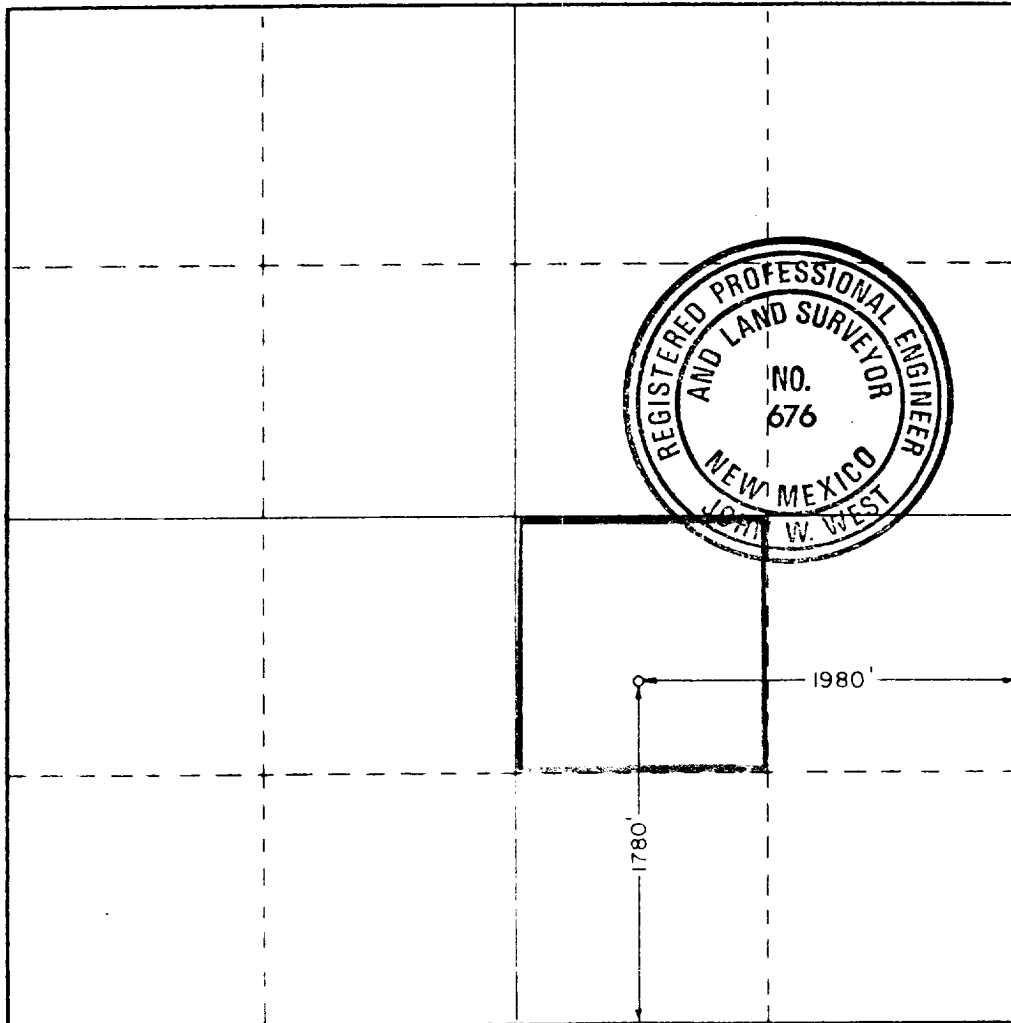
Operator LIBERTY OIL & GAS CORP.			Lessee DORIS FEDERAL			Acres 2		
Well Letter J	Section 26	Township 20 SOUTH	Range 28 EAST	County EDDY				
Actual Footage Location of Well:								
1780		feet from the	SOUTH	line and	1980		feet from the	EAST
Ground Level Elev. 3262.2	Producing Formation Bone Spring		Pool Wildcat		Dedicated Acreage 40			

1. Outline the acreage dedicated to the subject well by colored pencil or hachure marks on the plat below.
2. If more than one lease is dedicated to the well, outline each and identify the ownership thereof (both as to working interest and royalty).
3. If more than one lease of different ownership is dedicated to the well, have the interests of all owners been consolidated by communitization, unitization, force-pooling, etc?

☐ Yes ☐ No If answer is "yes," type of consolidation _____

If answer is "no," list the owners and tract descriptions which have actually been consolidated (Use reverse side of this form if necessary.) _____

No allowable will be assigned to the well until all interests have been consolidated (by communitization, unitization, forced-pooling, or otherwise) or until a non-standard unit, eliminating such interests, has been approved by the Commission.



CERTIFICATION

I hereby certify that the information contained herein is true and complete to the best of my knowledge and belief.

Name
Terry W. Franklin

Position
Agent

Company
Liberty Oil & Gas Corp.

Date
3/27/84

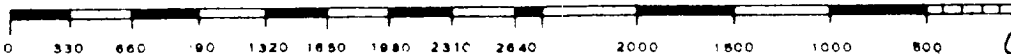
I hereby certify that the well location shown on this plat was plotted from field notes of actual surveys made by me or under my supervision, and that the same is true and correct to the best of my knowledge and belief.

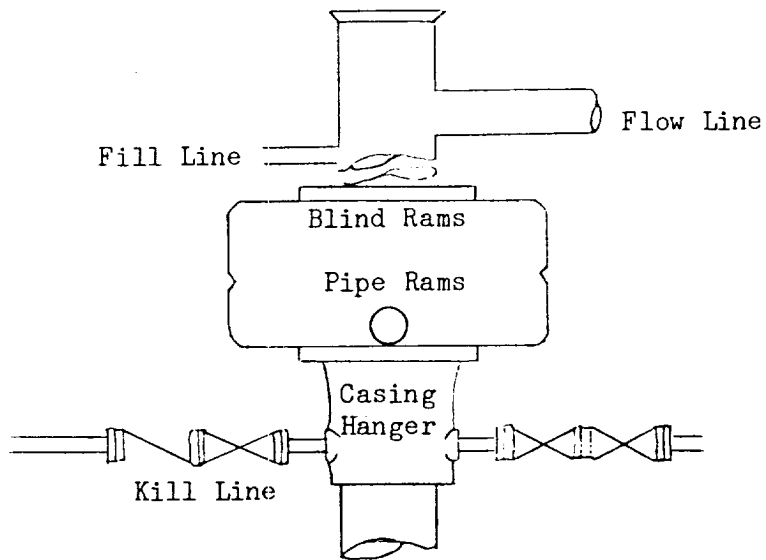
Date Surveyed
MARCH 19, 1984

Registered Professional Engineer and/or Land Surveyor

John W. West

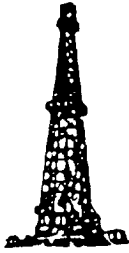
Certificate No. **JOHN W. WEST, 676**
RONALD J. EIDSON, 3239





BOP STACK

~~2000~~ ³⁰⁰⁰ psi working pressure



Oil & Gas Administrative Services

TERRY W. FRANKLIN

P.O. Box 2664
Roswell, NM 88201

SUPPLEMENTAL DRILLING DATA

Liberty Oil & Gas Corp.
Doris Federal No. 2
1780' FSL & 1980' FEL
Sec. 26, T20S, R28E
Eddy County, N.M.
NM-15873

1. Surface Formation: Alluvium

2. Estimated Geological Marker Tops:

Yates	1150'	Delaware	2992'
El Capitan	1401'	Bone Spring	5362'

3. Mineral Bearing Formations: Delaware-oil, Bone Spring-oil

4. Proposed Casing and Cement Program:

- 13 3/8" - In a 17 1/2" hole, set approximately ^{400'}~~600'~~, 13 3/8", 48#, J-55, ST&C casing and cement with 640 sx cement to surface.
- 9 5/8" - In a 12 1/4" hole, set approximately 2900', 9 5/8", 36#, K-55, ST&C casing and cement with 1125 sx cement to surface.
- 5 1/2" - In a 7 7/8" hole, set to total depth, 5 1/2", 17#, K-55, ST&C casing and cement to cover all pay zones.

5. Pressure Control Equipment: A ³⁰⁰⁰~~2000~~ psi working pressure BOP will be installed after 9 5/8" casing is set and cemented.

6. Testing, Logging, and Coring Programs:

Testing: None
Logging: CNL & DLL
Coring : None

7. Auxiliary Equipment: A kelly cock will be installed on the rig floor while drilling operations are commenced.

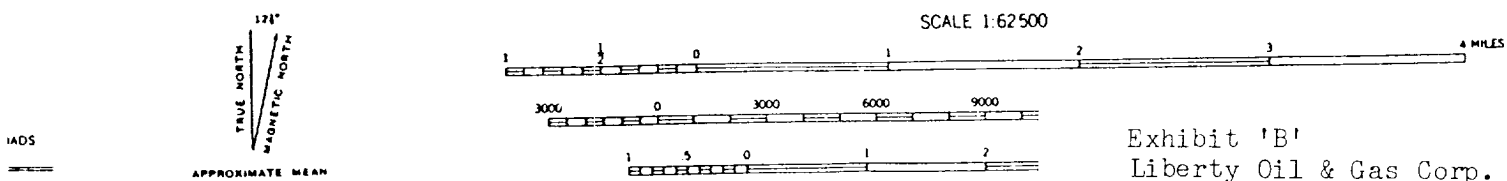
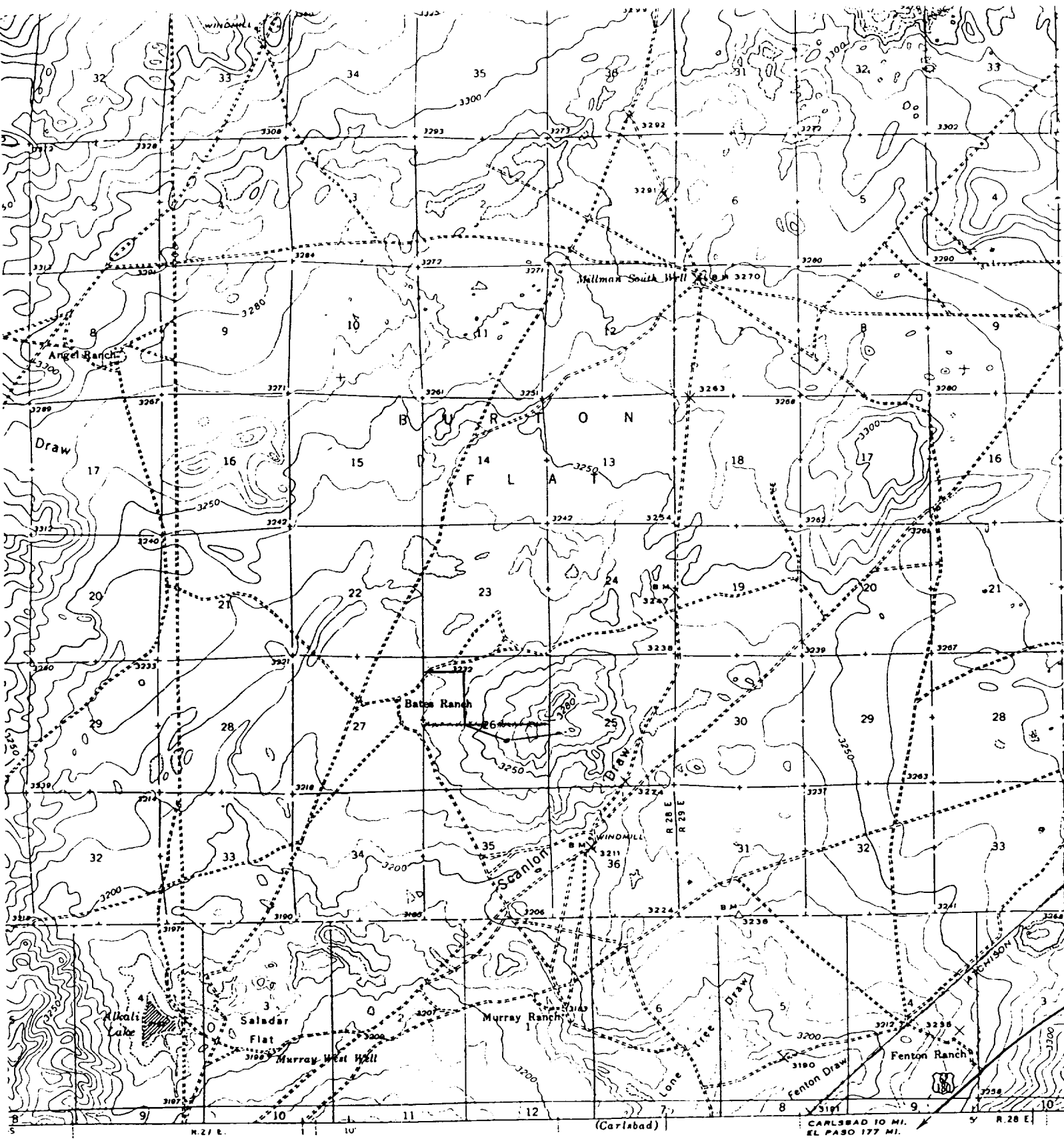
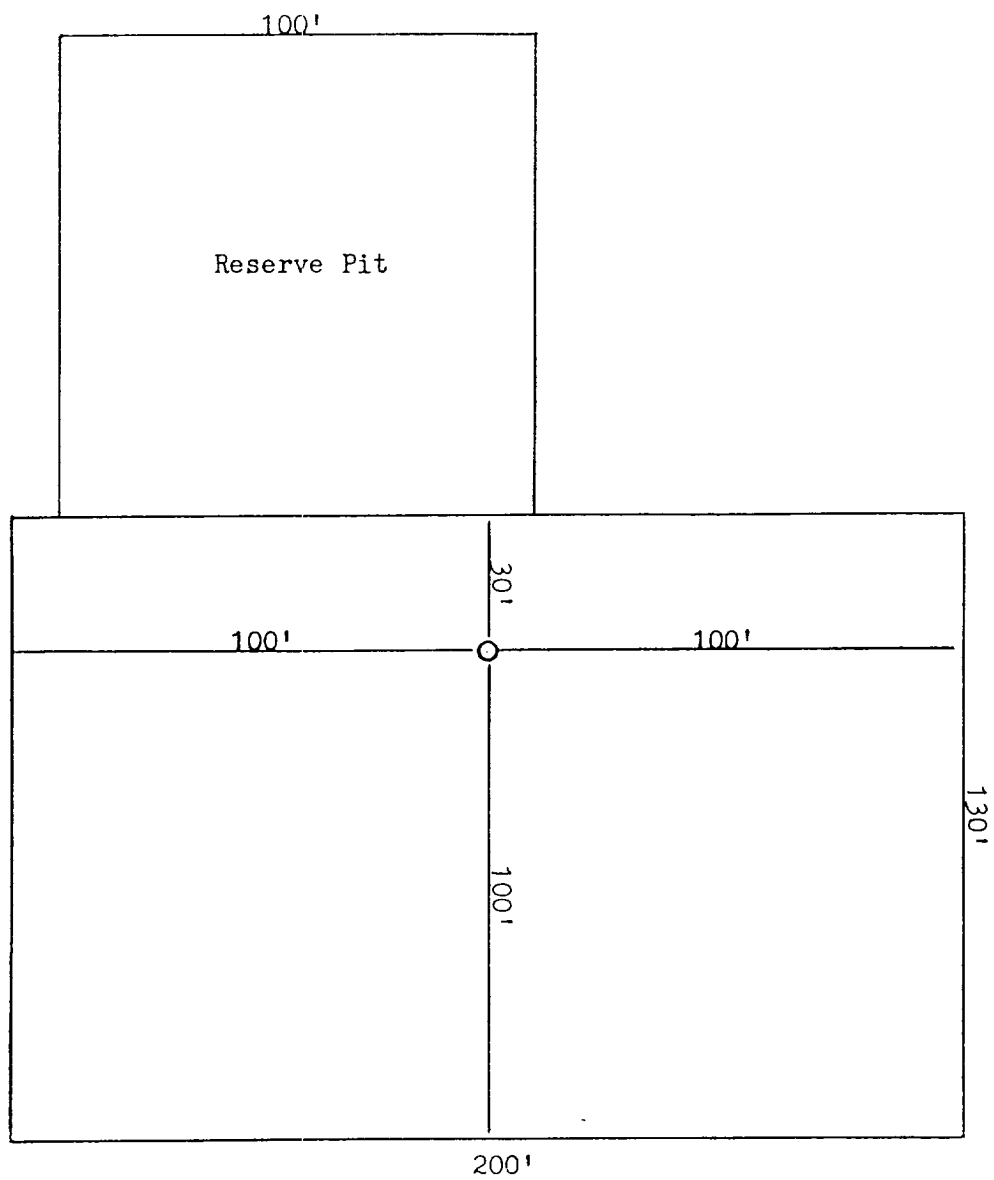


Exhibit 'B'
 Liberty Oil & Gas Corp.
 Doris Federal No. 2
 1780' FSL & 1980' FEL
 Sec. 26, T20S, R28E
 Eddy County, N.M.

Contour Interval
 Datum is mean sea

S



N

Exhibit 'C'
Liberty Oil & Gas Corp.
Doris Federal No. 2