

F OIL CONS. COMMISSION
Drawer DD
Artesia, N.M. 88210
RECEIVED BY
SUBMIT IN T. Llicate*
(Other instructions on
reverse side)
UNITED STATES
DEPARTMENT OF THE INTERIOR
GEOLOGICAL SURVEY O. C. D.

Form approved.
Budget Bureau No. 42-R1425.

30-015-24850

c/87

APPLICATION FOR PERMIT TO DRILL, DEEPEN, OR PLUG BACK

1a. TYPE OF WORK

DRILL ☒DEEPEEN ☐PLUG BACK ☐

b. TYPE OF WELL

OIL
WELL ☒GAS
WELL ☐

OTHER

SINGLE
ZONE ☒MULTIPLE
ZONE ☐

2. NAME OF OPERATOR

PERRY R. BASS ✓

3. ADDRESS OF OPERATOR

P. O. BOX 2760 MIDLAND, TEXAS 79702

4. LOCATION OF WELL (Report location clearly and in accordance with any State requirements.)*

At surface

2280' FNL & 1980' FWL SECTION 27, T20S, R31E

At proposed prod. zone

SAME AS ABOVE

14. DISTANCE IN MILES AND DIRECTION FROM NEAREST TOWN OR POST OFFICE*

24 MILES EAST OF CARLSBAD, NEW MEXICO

15. DISTANCE FROM PROPOSED*

LOCATION TO NEAREST

PROPERTY OR LEASE LINE, FT.

(Also to nearest drlg. unit line, if any)

1980'

18. DISTANCE FROM PROPOSED LOCATION*

TO NEAREST WELL, DRILLING, COMPLETED,
OR APPLIED FOR, ON THIS LEASE, FT.

+1500'

16. NO. OF ACRES IN LEASE

--

19. PROPOSED DEPTH

6000'

17. NO. OF ACRES ASSIGNED
TO THIS WELL

40

20. ROTARY OR CABLE TOOLS

ROTARY

21. ELEVATIONS (Show whether DF, RT, GR, etc.)

GL 3533.8'

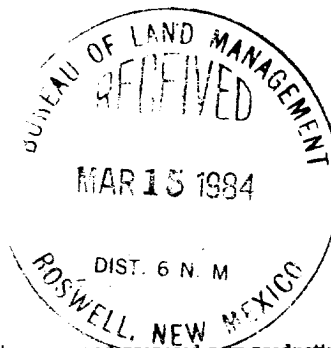
22. APPROX. DATE WORK WILL START*

UPON APPROVAL

23. PROPOSED CASING AND CEMENTING PROGRAM

SIZE OF HOLE	SIZE OF CASING	WEIGHT PER FOOT	SETTING DEPTH	QUANTITY OF CEMENT
20"	16"	65#	40' +	Ready-Mix (Conductor)
15"	11 3/4"	42#	835' +	850 sks. Circ. to Surface
11"	8 5/8"	24#	2560' +	750 sks. Circ. to Surface
7 7/8"	5 1/2"	14#	5850' +	550 sks. Est. TOC @ 2300'

BOP diagrams, Drilling Prognosis, Formation tops and surface use plans are attached.



IN ABOVE SPACE DESCRIBE PROPOSED PROGRAM: If proposal is to deepen or plug back, give data on present productive zone and proposed new productive zone. If proposal is to drill or deepen directionally, give pertinent data on subsurface locations and measured and true vertical depths. Give blowout preventer program, if any.

24.

SIGNED

Stephen D. Smith

TITLE

Engineering Assistant

DATE

February 23, 1984

(This space for Federal or State office use)

PERMIT NO.

APPROVAL DATE

District Manager

APPROVED BY

'Orig. Sgd' Earl R. Cunningham

TITLE

DATE

APR 10 1984

CONDITIONS OF APPROVAL, IF ANY:

APPROVAL SUBJECT TO
GENERAL REQUIREMENTS AND
SPECIAL STIPULATIONS
ATTACHEDPost. Rpt.
AD-107-138
4-27-84

**MEXICO OIL CONSERVATION COMMISSION
WELL LOCATION AND ACREAGE DEDICATION PLAT**

Form C-102
Supersedes C-128
Effective 1-1-85

All distances must be from the outer boundaries of the Section

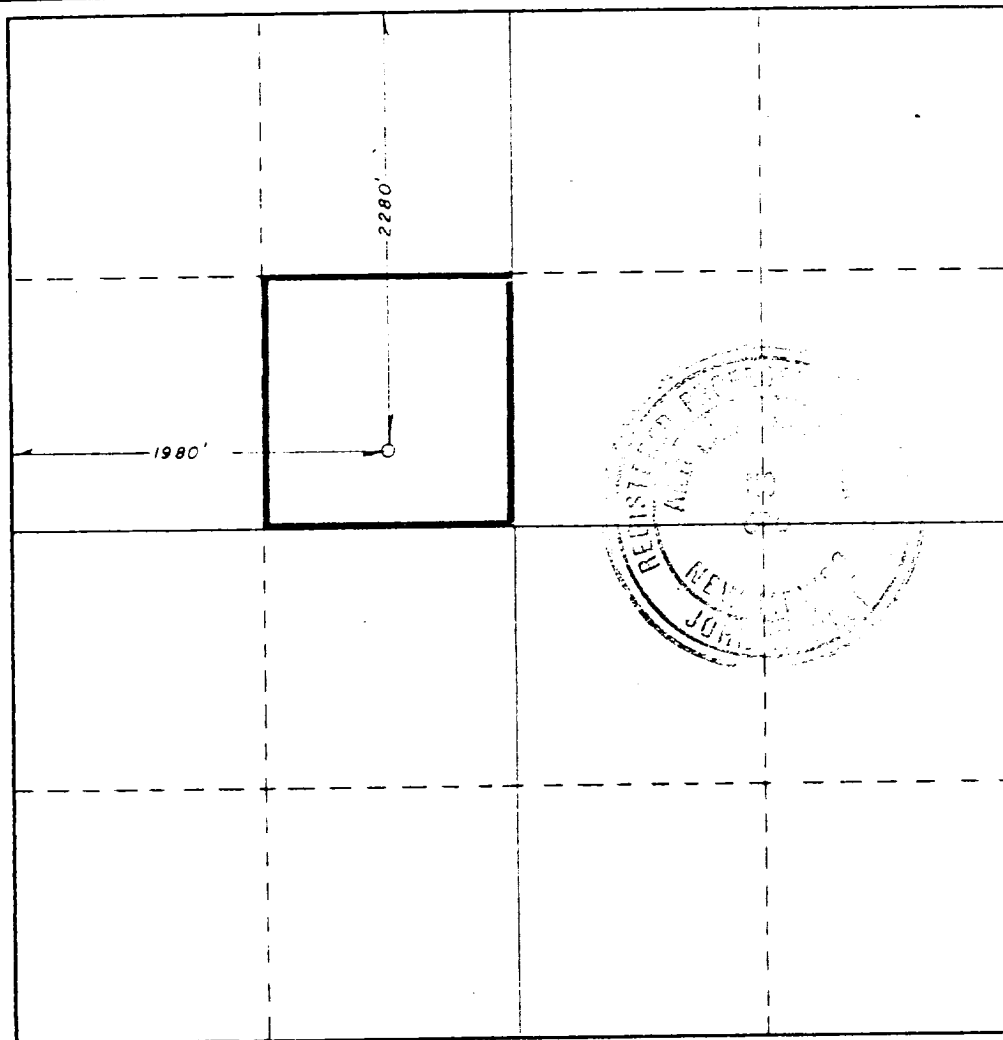
Operator PERRY R. BASS			Lease JOSEPHINE RODKE FED.		Well No. 101-3
Post Letter F	Section 27	Township 20S	Range 31E	County EDDY	
Actual Portage Location of Well: 1980 feet from the WEST line and 2280 feet from the NORTH line					
Ground Level Elev. 3533.8	Producing Formation DELAWARE	Pool PARALLEL DELAWARE		Dedicated Acreage: 40 Acres	

1. Outline the acreage dedicated to the subject well by colored pencil or hatchure marks on the plat below.
2. If more than one lease is dedicated to the well, outline each and identify the ownership thereof (both as to working interest and royalty).
3. If more than one lease of different ownership is dedicated to the well, have the interests of all owners been consolidated by communitization, unitization, force-pooling, etc?

☒ Yes ☐ No If answer is "yes," type of consolidation Unit

If answer is "no," list the owners and tract descriptions which have actually been consolidated. (Use reverse side of this form if necessary.) _____

No allowable will be assigned to the well until all interests have been consolidated (by communitization, unitization, forced-pooling, or otherwise) or until a non-standard unit, eliminating such interests, has been approved by the Commission.



CERTIFICATION

I hereby certify that the information contained herein is true and complete to the best of my knowledge and belief.

Stephen D. Smith

Stephen D. Smith

Engineering Assistant

Perry R. Bass

March 5, 1984

I hereby certify that the well location shown on this plat was plotted from field notes of actual surveys made by me or under my supervision, and that the same is true and correct to the best of my knowledge and belief.

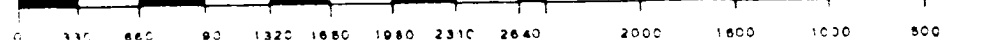
Date Surveyed:
3/1/84

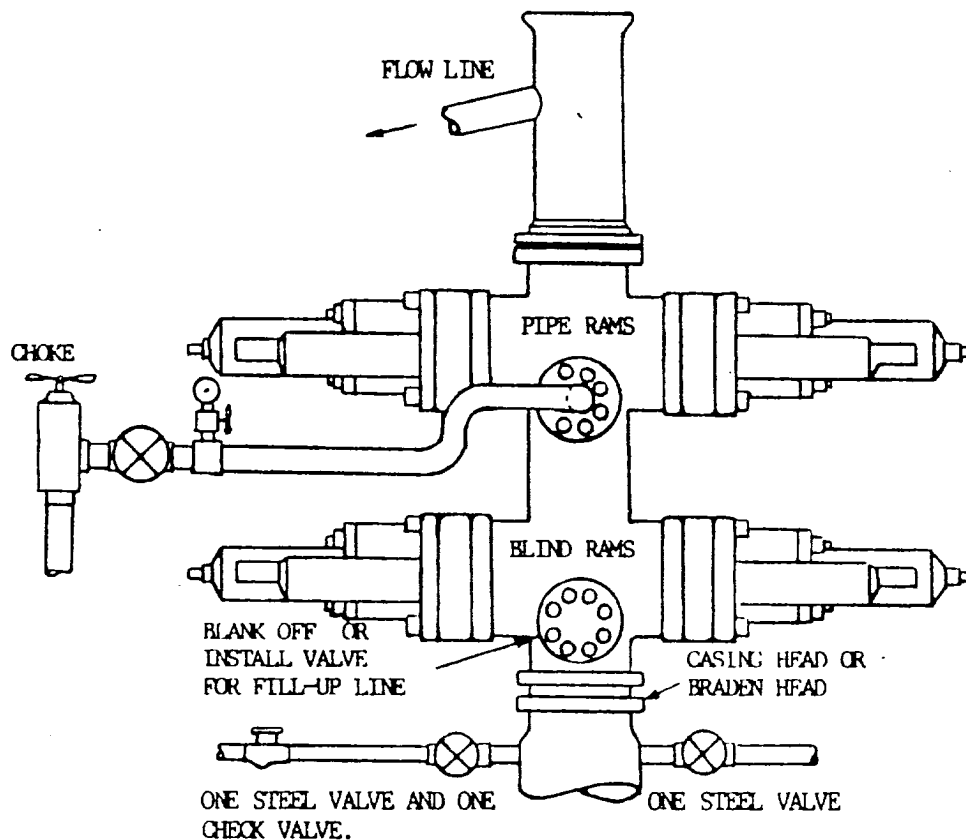
Registered Professional Engineer
and/or Land Surveyor

John W. West

Certificate No. **JOHN W. WEST, 676**

RONALD J. EIDSON, 3239





THE FOLLOWING CONSTITUTE MINIMUM BLOWOUT PREVENTER REQUIREMENTS

- A. One double gate blowout preventer with lower rams blind and upper rams for pipe, all hydraulically controlled.
- B. Opening on preventers between rams to be flanged, studded or clamped and at least two inches diameter.
- C. All connections from operating manifold to preventers to be all steel hose or tube a minimum of one inch in diameter.
- D. The available closing pressure shall be at least 15% in excess of that required with sufficient volume to operate (close, open, and re-close) the preventers.
- E. All connections to and from preventers to have a pressure rating equivalent to that of the BOP's.
- F. Manual controls to be installed before drilling cement plug.
- G. Valve to control flow through drill pipe to be located on rig floor.
- H. Choke may be either positive or adjustable. Choke spool may be used between rams.

BEPCO II

ONE HYDRAULIC DUAL BLOWOUT PREVENTER

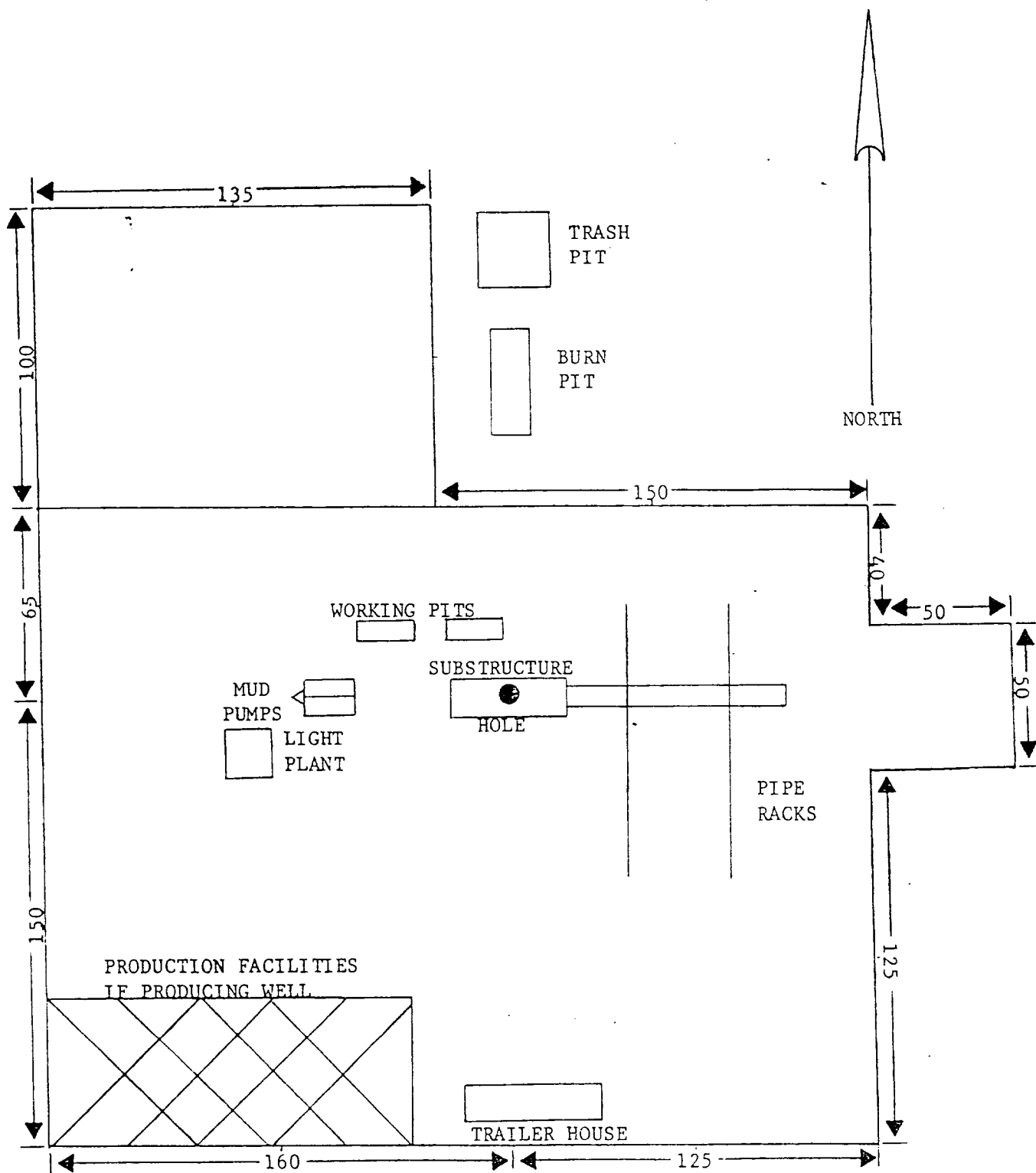


EXHIBIT "B"