

AM OIL CONS. COMMISSION
Drawer DD
UNITED STATES 88210
DEPARTMENT OF THE INTERIOR
BUREAU OF LAND MANAGEMENT

RECEIVED
SUBMIT IN TRIPLICATE
MAY 8 1984
O. C. D.
ARTESIA, OFFICE

30-015-24868
Form approved.
Budget Bureau No. 1004-0136
Expires August 31, 1985

APPLICATION FOR PERMIT TO DRILL, DEEPEN, OR PLUG BACK

1. TYPE OF WORK
DRILL ☒ DEEPEN ☐ PLUG BACK ☐

2. TYPE OF WELL
OIL WELL ☒ GAS WELL ☐ OTHER ☐
SINGLE ZONE ☒ MULTIPLE ZONE ☐

3. NAME OF OPERATOR
Liberty Oil & Gas Corporation

4. ADDRESS OF OPERATOR
1776 Woodstead Court, Suite 200, The Woodlands, Tx., 77380

5. LOCATION OF WELL (Report location clearly and in accordance with any State requirements.)
At surface
1980' FSL & 660' FEL NE/4 SE/4 Unit letter I
At proposed prod. zone Same

6. DISTANCE IN MILES AND DIRECTION FROM NEAREST TOWN OR POST OFFICE
7 miles northeast of Carlsbad, New Mexico

7. DISTANCE FROM PROPOSED LOCATION TO NEAREST PROPERTY OR LEASE LINE, FT.
(Also to nearest drlg. unit line, if any)
660' E

8. DISTANCE FROM PROPOSED LOCATION TO NEAREST WELL, DRILLING, COMPLETED, OR APPLIED FOR, ON THIS LEASE, FT.
1320' W

9. ELEVATIONS (Show whether DF, RT, GR, etc.)
3278' GR

PROPOSED CASING AND CEMENTING PROGRAM

SIZE OF HOLE	SIZE OF CASING	WEIGHT PER FOOT	SETTING DEPTH	QUANTITY OF CEMENT
17 1/2"	13 3/8"	48.0#	400'	400 sx(Circulate)
11.0"	8 5/8"	24.0#	2700'	1050 sx(Circulate)
7 7/8"	5 1/2"	17.0#	T.D.	Sufficient to cover all pay zones.

Proposed plans are to drill to the Bone Spring formation and test the Bone Spring and intermediate formations for possible commercial production of oil and gas.

ROP sketch is attached.

Also request approval to run a DV tool and a cement basket at approximately 1450' on the intermediate casing string for two stage cement.

IN ABOVE SPACE DESCRIBE PROPOSED PROGRAM: If proposal is to deepen or plug back, give data on present productive zone and proposed new productive zone. If proposal is to drill or deepen directionally, give pertinent data on subsurface location and measured and true vertical depths. Give blowout preventer program, if any.

SIGNED Henry V. Franklin TITLE Agent DATE 4/30/84

(This space for Federal or State office use)

PERMIT NO. _____ APPROVAL DATE _____

APPROVED BY _____ TITLE AREA MANAGER DATE _____

CONDITIONS OF APPROVAL, IF ANY:

APPROVAL SUBJECT TO
GENERAL REQUIREMENTS AND
SPECIAL STIPULATIONS
ATTACHED

*See Instructions On Reverse Side

All distances must be from the outer boundaries of the Section.

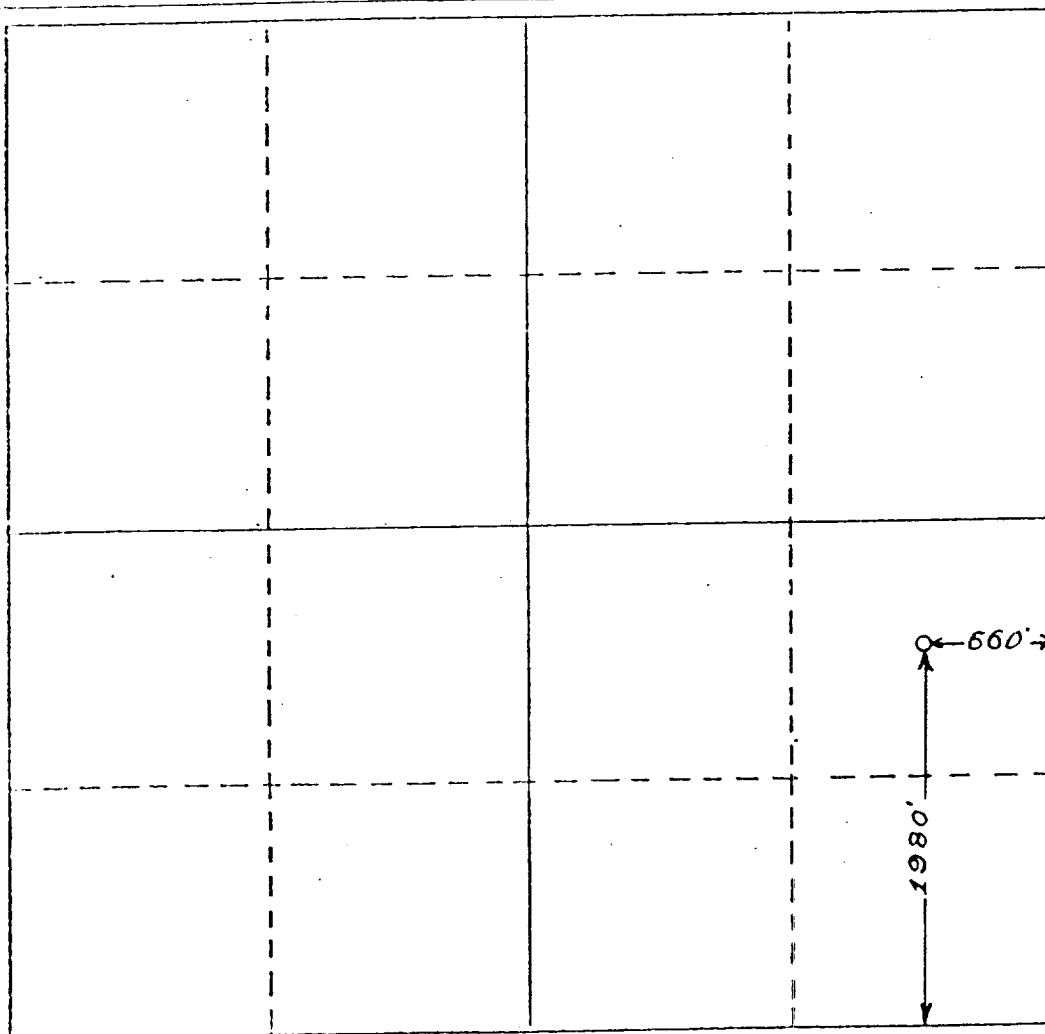
Operator Liberty Oil & Gas		Lease Doris Federal		Well No. # 3
Unit Letter I	Section 26	Township 20 South	Range 28 East	County Eddy
Actual Footage Location of Well: 1980 feet from the South line and 660 feet from the East line				
Ground Level Elev. 3278 LS	Producing Formation Bone Spring		Pool Wildcat	Dedicated Acreage: 40 Acres

1. Outline the acreage dedicated to the subject well by colored pencil or hatchure marks on the plat below.
2. If more than one lease is dedicated to the well, outline each and identify the ownership thereof (both as to working interest and royalty).
3. If more than one lease of different ownership is dedicated to the well, have the interests of all owners been consolidated by communitization, unitization, force-pooling, etc?

☐ Yes ☐ No If answer is "yes," type of consolidation _____

If answer is "no," list the owners and tract descriptions which have actually been consolidated. (Use reverse side of this form if necessary.) _____

No allowable will be assigned to the well until all interests have been consolidated (by communitization, unitization, forced-pooling, or otherwise) or until a non-standard unit, eliminating such interests, has been approved by the Division.



CERTIFICATION

I hereby certify that the information contained herein is true and complete to the best of my knowledge and belief.

Name
Terry W. Franklin
Position
Agent
Company
Liberty Oil & Gas Corp.
Date
4/30/84

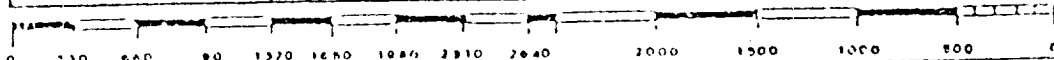
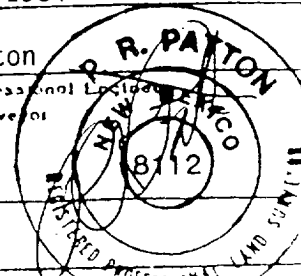
I hereby certify that the well location shown on this plat was plotted from field notes of actual surveys made by me or under my supervision, and that the same is true and correct to the best of my knowledge and belief.

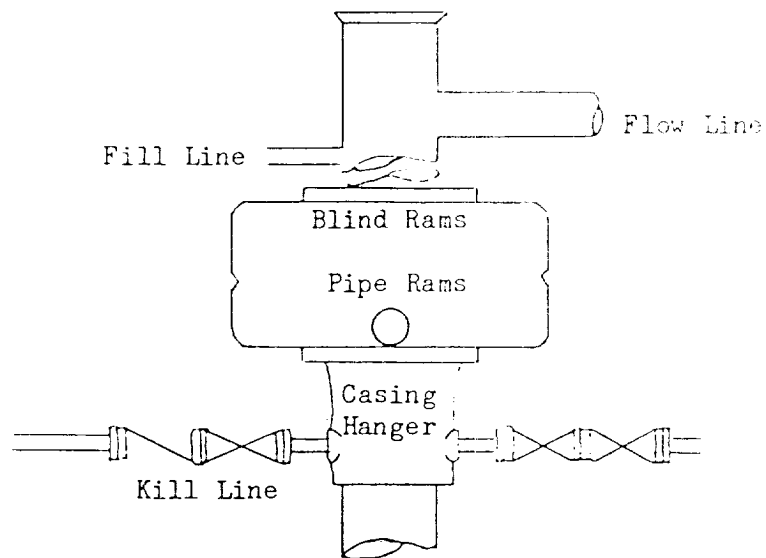
April 23, 1984

Date Surveyed
P. R. Patton
Registered Professional Land Surveyor
and/or Land Surveyor

8112

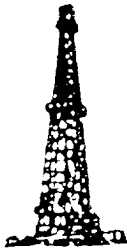
Certificate No.





BOP STACK

3000 psi working pressure



Oil & Gas Administrative Services

TERRY W. FRANKLIN

P.O. Box 2664

Roswell, NM 88201

SUPPLEMENTAL DRILLING DATA

Liberty Oil & Gas Corp.
Doris Federal No. 3
1980' FSL & 660' FEL
Sec. 26, T20S, R28E
Eddy County, N.M.
NM-15873

1. Surface Formation: Alluvium
2. Estimated Geological Marker Tops:

Yates	1158'	Delaware	3026'
El Capitan	1418'	Bone Spring	5396'
3. Mineral Bearing Formations: Delaware-oil, Bone Spring-oil
4. Proposed Casing and Cement Program:
 - 13 3/8" - In a 17 1/2" hole, set approximately 400', 13 3/8", 48#, J-55, ST&C casing. Cement to surface with 400 sx cement.
 - 8 5/8" - In an 11" hole, set approximately 2700'. 8 5/8". 24#. K-55. ST&C casing. Cement to surface with 1050 sx cement.
 - 5 1/2" - In a 7 7/8" hole, set to total depth, 5 1/2" 17#, K-55, ST&C casing. Cement to isolate all oil, water, and gas zones.
5. Pressure Control Equipment: A 3000 psi working pressure BOP will be installed after 8 5/8" casing is set.
6. Testing, Logging, and Coring Program:

Testing:	None
Logging:	CNL & DLL
Coring :	None
7. Auxiliary Equipment: A kelly cock will be installed on the rig floor while drilling operations are commenced.

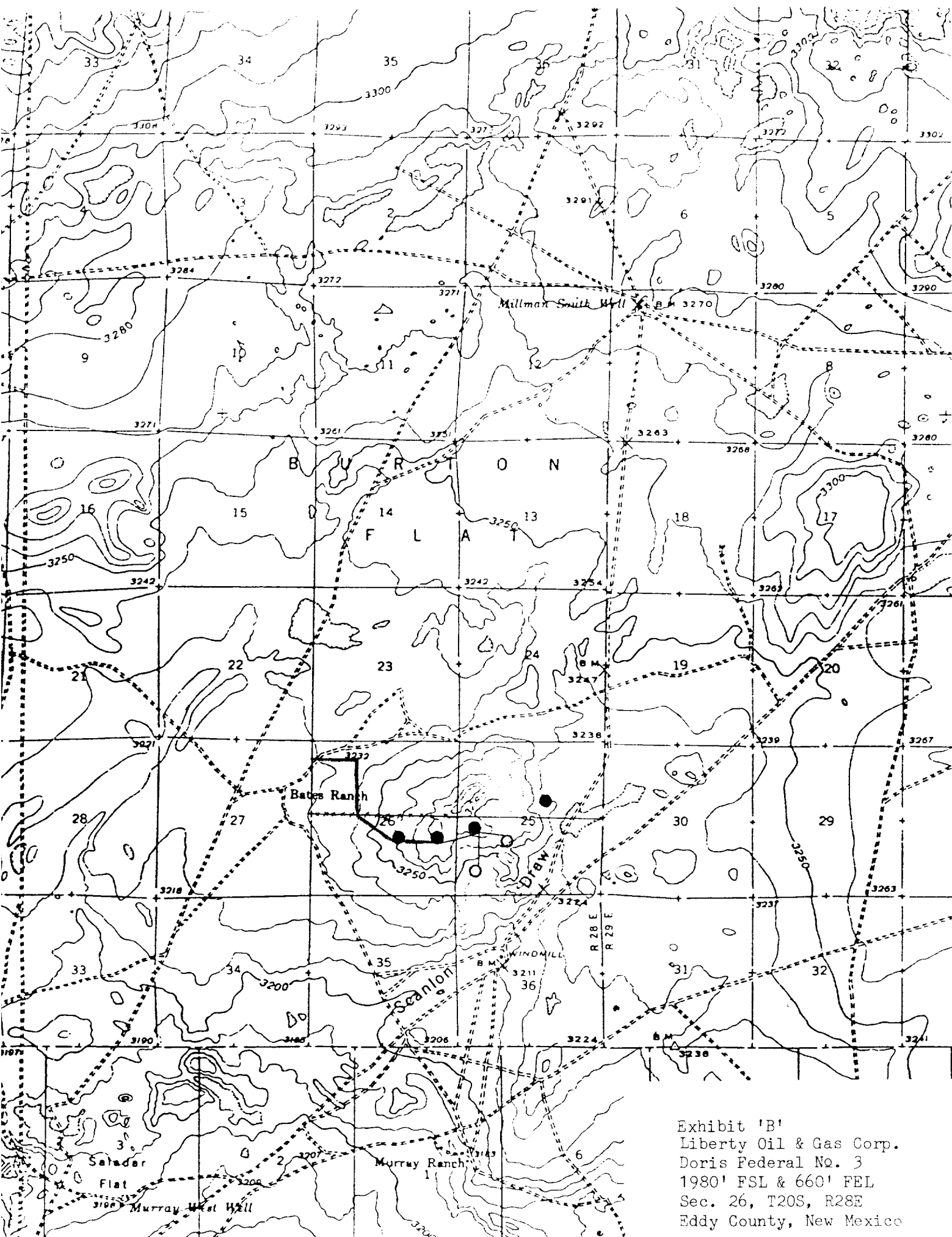
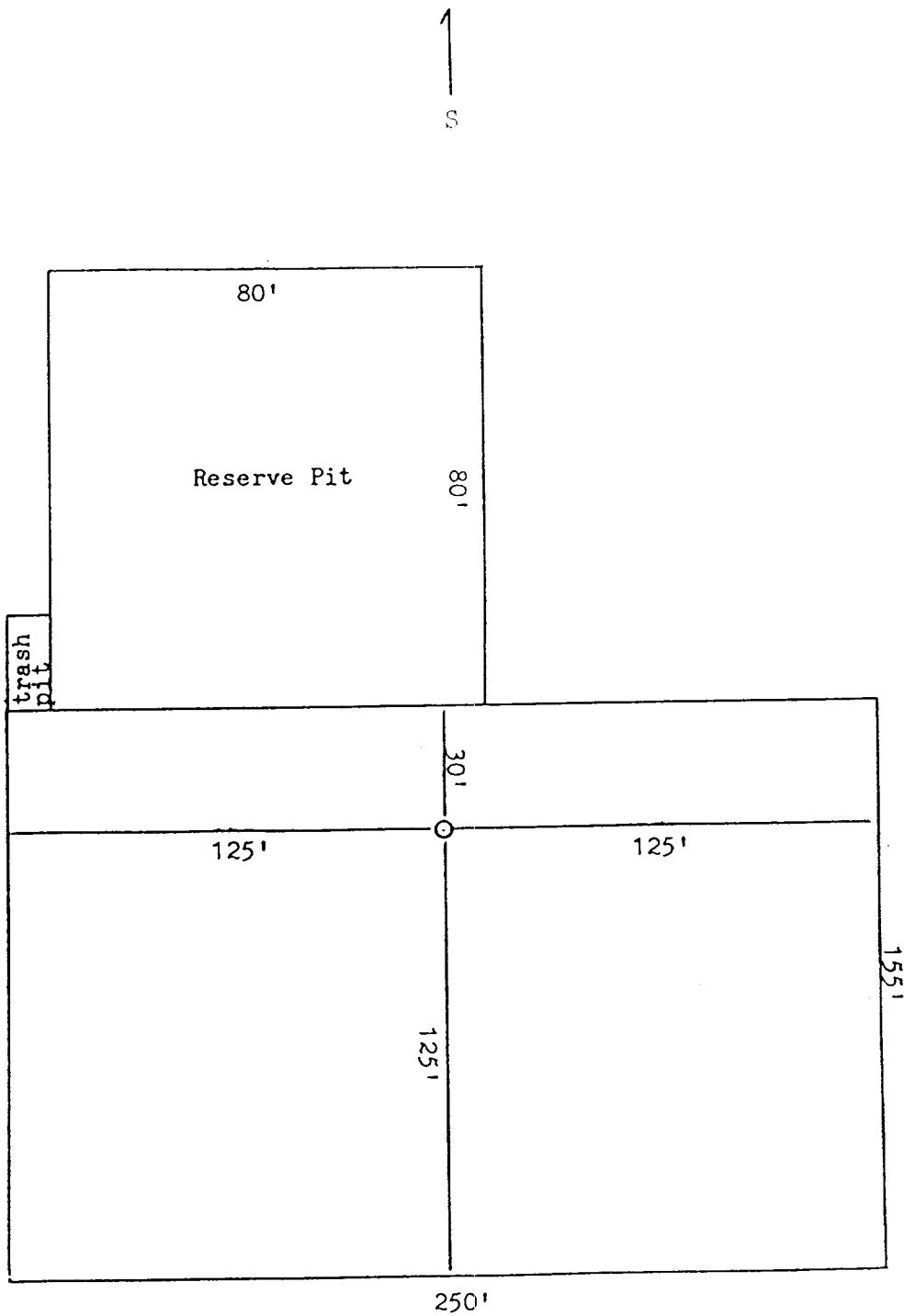


Exhibit 'B'
Liberty Oil & Gas Corp.
Doris Federal No. 3
1980' FSL & 660' FEL
Sec. 26, T20S, R28E
Eddy County, New Mexico



* Reserve pits to face the south due to location falling 50' south of the existing access road.

Exhibit 'C'
 Liberty Oil & Gas Corp.
 Doris Federal No. 3
 1980' FSL & 660' FEL
 Sec. 26, T20S, R28E
 Eddy County, New Mexico