

UNITED STATES
DEPARTMENT OF THE INTERIOR
BUREAU OF LAND MANAGEMENT

RECEIVED BY

JUN 07 1984

O. C. D.

ARTESIA OFFICE

5. LEASE DESIGNATION AND SERIAL NO.

RM-17101

6. IF INDIAN, ALLOTTEE OR TRIBE NAME

7. UNIT AGREEMENT NAME

8. FARM OR LEASE NAME

Lee Federal

9. WELL NO.

5

10. FIELD AND POOL, OR WILDCAT

Wildcat-Bone Spring

11. SEC., T., E., M., OR BLE.
AND SURVEY OR AREA

Sec. 25, T20S, R28E

12. COUNTY OR PARISH 13. STATE

Eddy

N.M.

1a. TYPE OF WORK

DRILL ☒

DEEPEEN ☐

PLUG BACK ☐

b. TYPE OF WELL

OIL
WELL ☒

GAS
WELL ☐

OTHER

2. NAME OF OPERATOR

Liberty Oil & Gas Corporation

3. ADDRESS OF OPERATOR

1776 Woodstead Court, Suite 200, The Woodlands, Tx., 77380

4. LOCATION OF WELL (Report location clearly and in accordance with any State requirements.)*

At surface

860' FSL & 660' FWL SW/4 SW/4 Unit letter M

At proposed prod. zone

Same

14. DISTANCE IN MILES AND DIRECTION FROM NEAREST TOWN OR POST OFFICE*

7 miles northeast of Carlsbad, New Mexico

15. DISTANCE FROM PROPOSED*

LOCATION TO NEAREST

PROPERTY OR LEASE LINE, FT.

(Also to nearest drlg. unit line, if any)

660'

18. DISTANCE FROM PROPOSED LOCATION*
TO NEAREST WELL, DRILLING, COMPLETED,
OR APPLIED FOR, ON THIS LEASE, FT.

1240' S

16. NO. OF ACRES IN LEASE

560

19. PROPOSED DEPTH

6600'

17. NO. OF ACRES ASSIGNED
TO THIS WELL

56

20. ROTARY OR CABLE TOOLS

Rotary

21. ELEVATIONS (Show whether DF, RT, GR, etc.)

3247' GR

22. APPROX. DATE WORK WILL START*

May 25, 1984

23. PROPOSED CASING AND CEMENTING PROGRAM

SIZE OF HOLE	SIZE OF CASING	WEIGHT PER FOOT	SETTING DEPTH	QUANTITY OF CEMENT
17 1/2"	13 3/8"	48.0#	400'	400sx(Circulate)
11.0"	8 5/8"	24.0#	2700'	1050 sx(Circulate)
7 7/8"	5 1/2"	17.0#	T.D.	Sufficient to cover all pay zones.

Proposed plans are to drill to the Bone Spring formation and test the Bone Spring and intermediate formations for possible commercial production of oil and gas.

BOP sketch is attached.

Also request approval to run a DV tool and a cement basket at approximately 1450' on the intermediate casing string for two stage cement.

IN ABOVE SPACE DESCRIBE PROPOSED PROGRAM: If proposal is to deepen or plug back, give data on present productive zone and proposed new productive zone. If proposal is to drill or deepen directionally, give pertinent data on subsurface locations and measured and true vertical depths. Give blowout preventer program, if any.

24

SIGNED

Ray W. Franklin

TITLE

Agent

DATE

4/30/84

(This space for Federal or State office use)

PERMIT NO.

APPROVAL DATE

AREA MANAGER

CARLSBAD RESOURCE AREA

APPROVED BY

CONDITIONS OF APPROVAL, IF ANY:

6-6-84
APPROVAL SUBJECT TO
GENERAL REQUIREMENTS AND
SPECIAL STIPULATIONS
ATTACHED

*See Instructions On Reverse Side

OIL CONSERVATION DIVISION

STATE OF NEW MEXICO
ENERGY AND MINERALS DEPARTMENTP. O. BOX 2088
SANTA FE, NEW MEXICO 87501Form C-102
Revised 10-1-78

All distances must be from the outer boundaries of the Section.

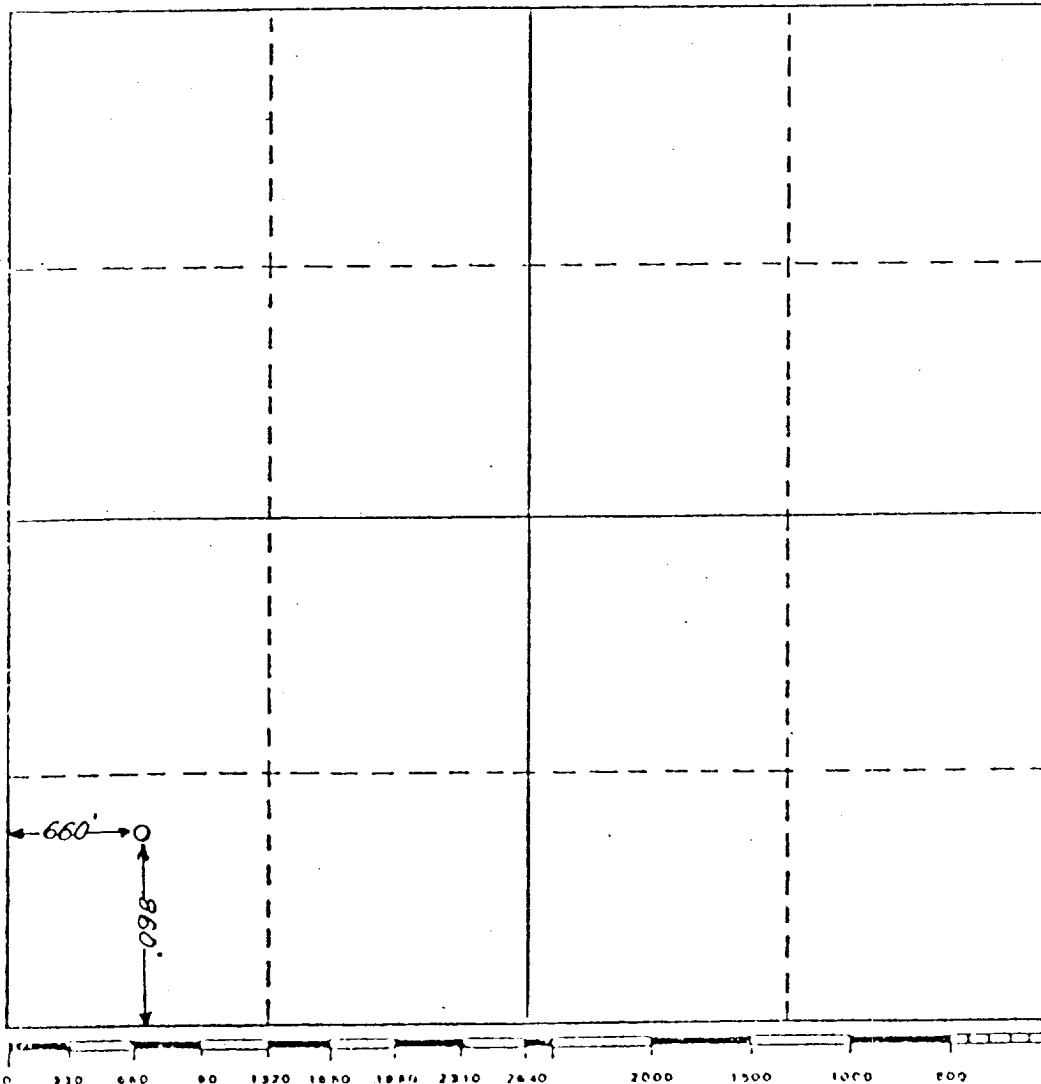
Operator Liberty Oil & Gas		Lease Lee Federal		Well No. # 5	
Unit Letter M	Section 25	Township 20 South	Range 28 East	County Eddy	
Actual Postage Location of Well: 860 feet from the South line and 660 feet from the West line					
Ground Level Elev. 3247 LS	Producing Formation Bone Spring		Pool Wildcat	Dedicated Acreage: 40 Acres	

1. Outline the acreage dedicated to the subject well by colored pencil or hatchure marks on the plat below.
2. If more than one lease is dedicated to the well, outline each and identify the ownership thereof (both as to working interest and royalty).
3. If more than one lease of different ownership is dedicated to the well, have the interests of all owners been consolidated by communitization, unitization, force-pooling, etc?

☐ Yes ☐ No If answer is "yes," type of consolidation _____

If answer is "no," list the owners and tract descriptions which have actually been consolidated. (Use reverse side of this form if necessary.) _____

No allowable will be assigned to the well until all interests have been consolidated (by communitization, unitization, forced-pooling, or otherwise) or until a non-standard unit, eliminating such interests, has been approved by the Division.



CERTIFICATION

I hereby certify that the information contained herein is true and complete to the best of my knowledge and belief.

Name
Terry W. Franklin
Position
Agent
Company
Liberty Oil & Gas Corp.

Date
4/30/84

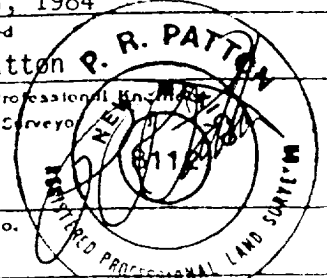
I hereby certify that the well location shown on this plat was plotted from field notes of actual surveys made by me or under my supervision, and that the same is true and correct to the best of my knowledge and belief.

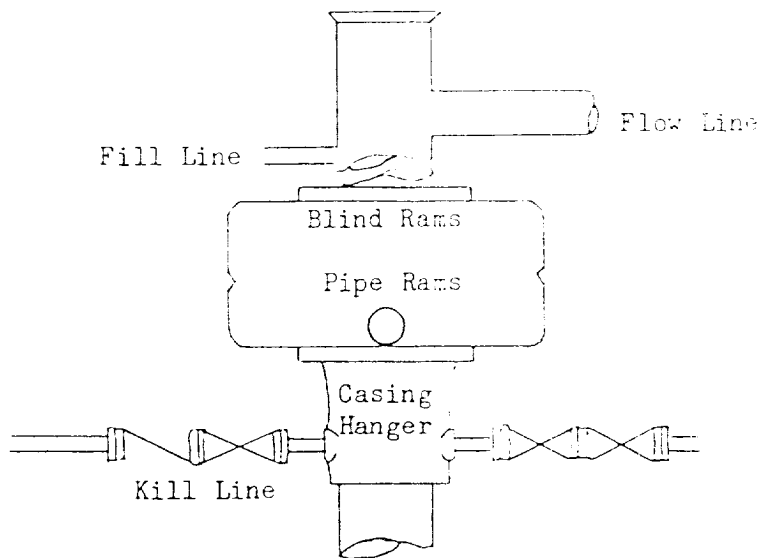
April 23, 1984

Date Surveyed
P. R. Patton
Registered Professional Engineer
and/or Land Surveyor

8112

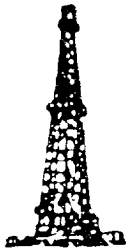
Certificate No.





BOP STACK

3000 psi working pressure



Oil & Gas Administrative Services

TERRY W. FRANKLIN

P.O. Box 2664

Roswell, NM 88201

SUPPLEMENTAL DRILLING DATA

Liberty Oil & Gas Corp.

Lee Federal No. 5

860' FSL & 660' FWL

Sec. 25, T20S, R28E

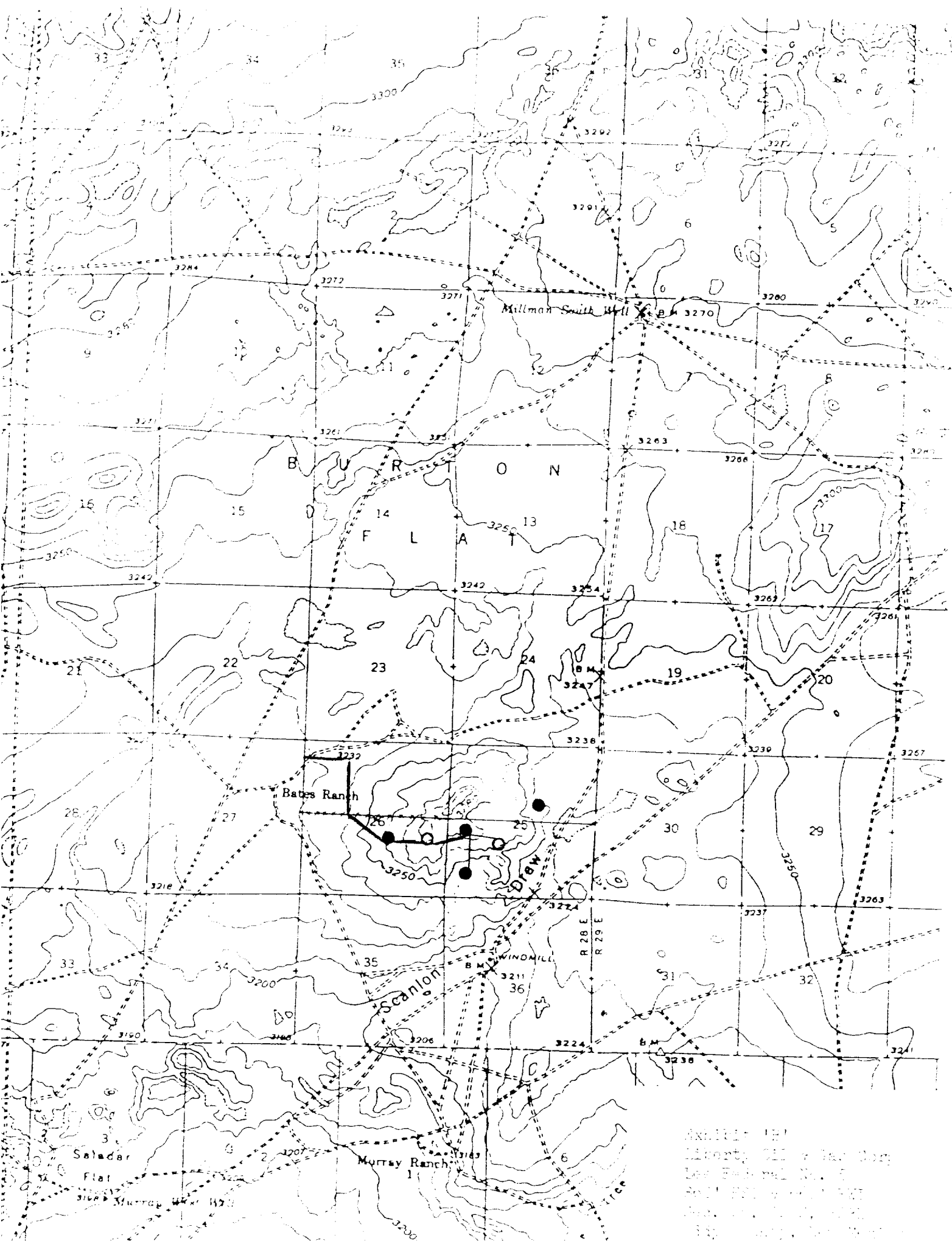
Eddy County, N.M.

NM-17103

1. Surface Formation: Alluvium
2. Estimated Geological Marker Tops:

Yates	1160'	Delaware	3072'
El Capitan	1430'	Bone Spring	5379'
3. Mineral Bearing Formations: Delaware-oil, Bone Spring-oil
4. Proposed Casing and Cement Program:
 - 13 3/8" - In a 17 1/2" hole, set approximately 400', 13 3/8", 48#, J-55, ST&C casing. Cement to surface with 400 sx cement.
 - 8 5/8" - In an 11" hole, set approximately 2700', 8 5/8", 24#, K-55, ST&C casing. Cement to surface with 1050 sx cement.
 - 5 1/2" - In a 7 7/8" hole, set to total depth, 5 1/2" 17#, K-55, ST&C casing. Cement to isolate all oil, water, and gas zones.
5. Pressure Control Equipment: A 3000 psi working pressure BOP will be installed after 8 5/8" casing is set.
6. Testing, Logging, and Coring Program:

Testing:	None
Logging:	CNL & DLL
Coring:	None
7. Auxiliary Equipment: A kelly cock will be installed on the rig floor while drilling operations are commenced.



Appendix 1B
Liberty, Ill. & Mac Don
Lee, E. & M. L. N. E.
Rd. 1, 1/2 mi. S. of
Liberty, Ill.
1/2 mi. S. of Liberty, Ill.

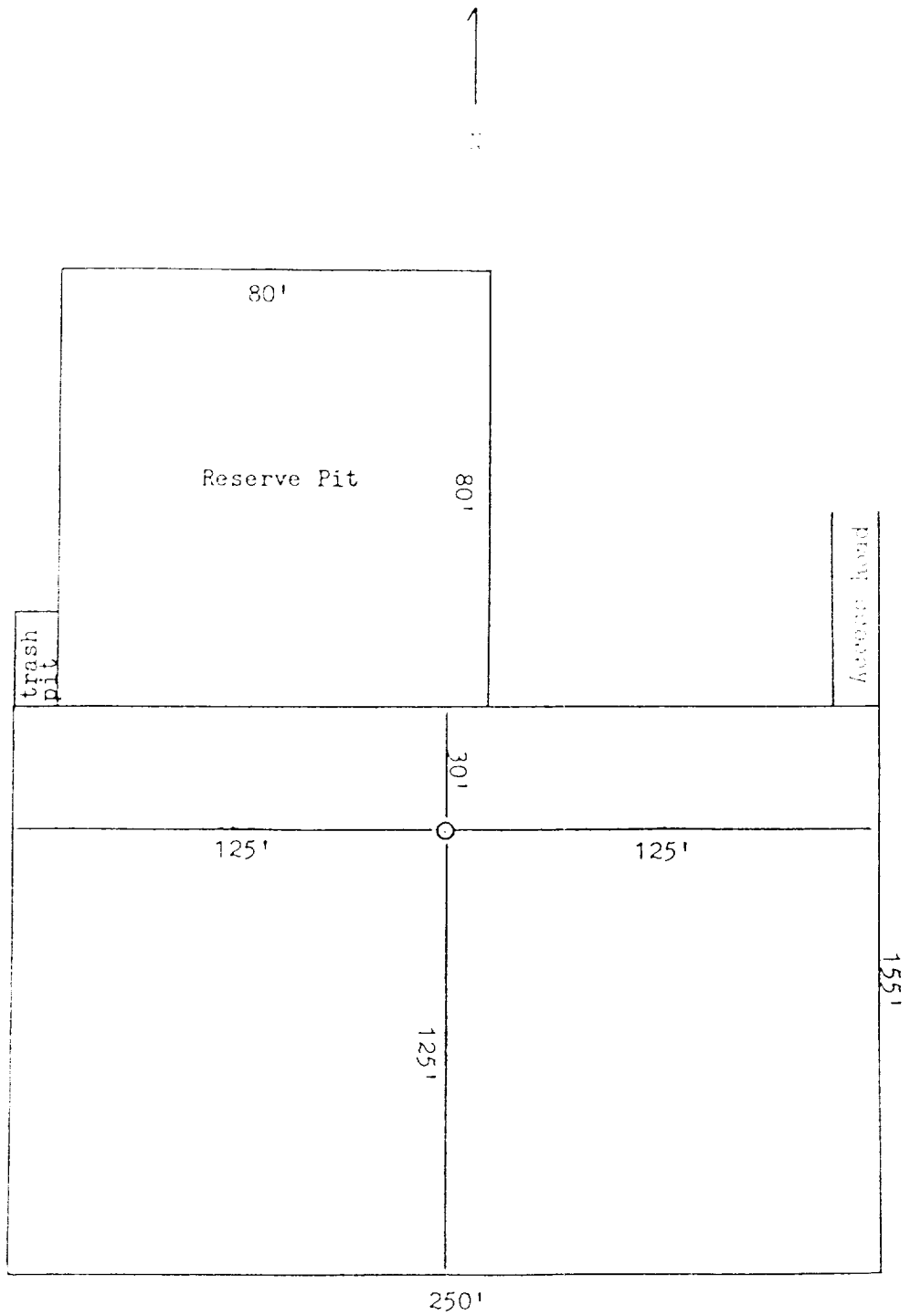


Exhibit 101
 Liberty Oil & Gas Corp.
 Lee Federal No. 5
 860' x 100' x 100' P&L
 Feb. 1, 1987
 El Paso County, New Mexico