

OIL CONSERVATION DIVISION

P O BOX 2088
SANTA FE, NEW MEXICO 87501

Form C-102
Revised 10-1-78

All distances must be from the outer boundaries of the Section

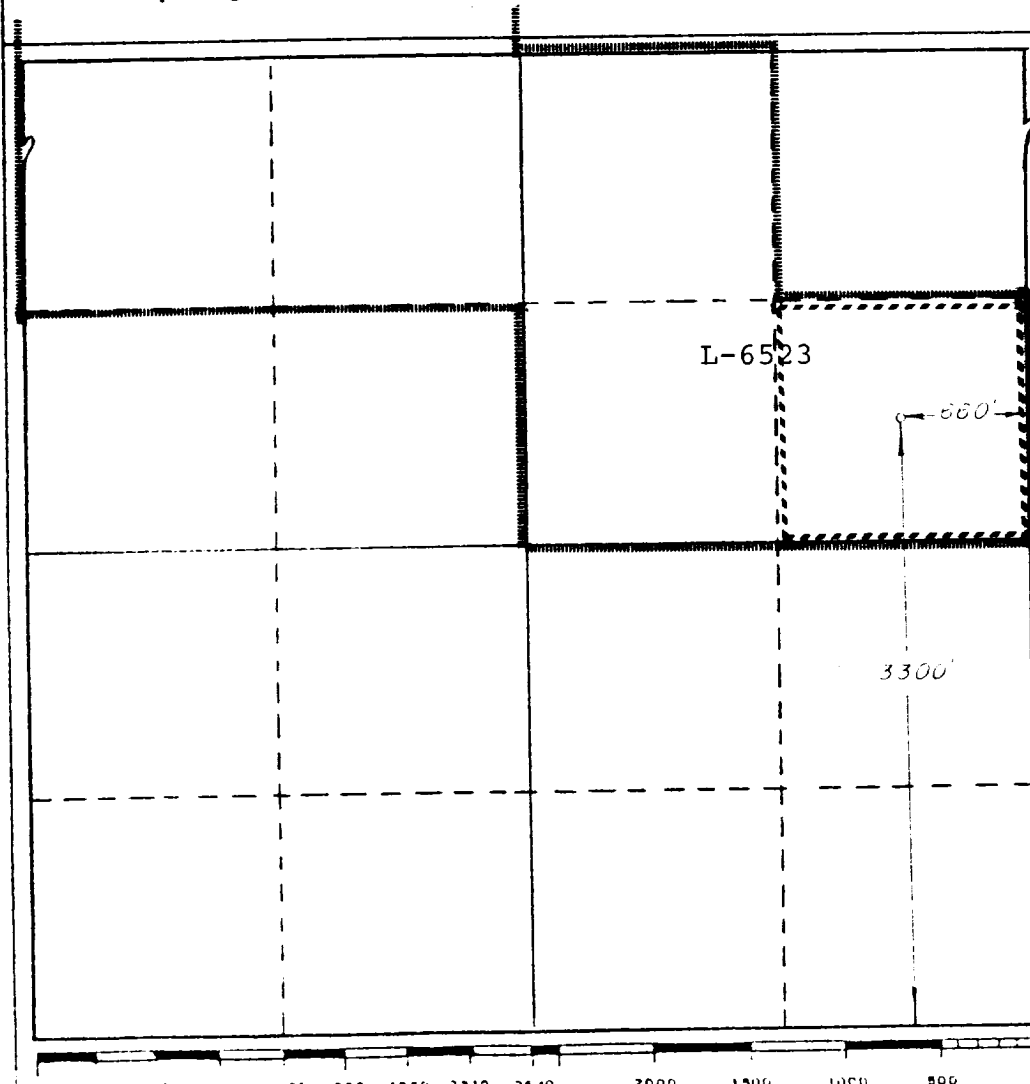
Operator MONSANTO COMPANY			Lease BURTON-FLAT UNIT		Well No. 36
Unit Letter P	Section 2	Township 21-S	Range 27-E	County EDDY	
Actual Footage Location of Well: 3300 feet from the South line and 660 feet from the East line					
Ground Level Elev. 3210'	Producing Formation Bone Spring		Pool Uvalde East Avalon-Bone Spring		Dedicated Acreage: 40 Acres

1. Outline the acreage dedicated to the subject well by colored pencil or hatchure marks on the plat below.
2. If more than one lease is dedicated to the well, outline each and identify the ownership thereof (both as to working interest and royalty).
3. If more than one lease of different ownership is dedicated to the well, have the interests of all owners been consolidated by communitization, unitization, force-pooling, etc?

☒ Yes ☐ No If answer is "yes," type of consolidation Unitization

If answer is "no," list the owners and tract descriptions which have actually been consolidated. (Use reverse side of this form if necessary.)

No allowable will be assigned to the well until all interests have been consolidated (by communitization, unitization, forced-pooling, or otherwise) or until a non-standard unit, eliminating such interests, has been approved by the Division.



CERTIFICATION

I hereby certify that the information contained herein is true and complete to the best of my knowledge and belief.

Jerry W. Long
Name **JERRY W. LONG**

Position
Agent

Company
MONSANTO OIL COMPANY

Date
August 30, 1984

I hereby certify that the well location shown on this plat was plotted from field notes of actual surveys made by me or under my supervision, and that the same is true and correct to the best of my knowledge and belief.

Date Surveyed
August 20, 1984

Registered Professional Engineer and/or Land Surveyor

[Signature]
Certificate No.

4882