

Form 3160-3
(November 1983)
(formerly 9-331C)

NEW OIL COM. COMMISSION

RECEIVED BY
APPROVED BY NM 88210

UNITED STATES
DEPARTMENT OF THE INTERIOR
BUREAU OF LAND MANAGEMENT

SUBMIT IN TRIPLICATE*
(Other instructions on
reverse side)

30-015-25112

Form approved.
Budget Bureau No. 1004-0136
Expires August 31, 1985

APPLICATION FOR PERMIT TO DRILL, DEEPEN, OR PLUG BACK

1a. TYPE OF WORK

DRILL ☒

DEEPEN ☐

PLUG BACK ☐

b. TYPE OF WELL

OIL
WELL ☒

GAS
WELL ☐

OTHER

SINGLE
ZONE ☒

MULTIPLE
ZONE ☐

2. NAME OF OPERATOR

Liberty Oil & Gas Corporation

3. ADDRESS OF OPERATOR

1776 Woodstead Court, Suite 200, The Woodlands, Texas 77380

4. LOCATION OF WELL (Report location clearly and in accordance with any State requirements.)

At surface

1980' FWL & 660' FSL SE/4 SW/4 Unit N

At proposed prod. zone Same

14. DISTANCE IN MILES AND DIRECTION FROM NEAREST TOWN OR POST OFFICE*

8 miles northeast of Carlsbad, New Mexico

10. DISTANCE FROM PROPOSED*

LOCATION TO NEAREST
PROPERTY OR LEASE LINE, FT.
(Also to nearest drig. unit line, if any)

660'

16. NO. OF ACRES IN LEASE

188.25

17. NO. OF ACRES ASSIGNED
TO THIS WELL

40

18. DISTANCE FROM PROPOSED LOCATION*

TO NEAREST WELL, DRILLING, COMPLETED,
OR APPLIED FOR, ON THIS LEASE, FT.

19. PROPOSED DEPTH

6100'

20. ROTARY OR CABLE TOOLS

Rotary

21. ELEVATIONS (Show whether DF, RT, GR, etc.)

3207' GR

22. APPROX. DATE WORK WILL START*

December 1, 1984

23.

PROPOSED CASING AND CEMENTING PROGRAM

SIZE OF HOLE	SIZE OF CASING	WEIGHT PER FOOT	SETTING DEPTH	QUANTITY OF CEMENT
17 1/2"	13 3/8"	54.50#	400'	400 sx(Circulate)
12 1/4" 11.0"	8 5/8"	24 & 28#	2550'	1150 sx(Circulate)
per 7 7/8"	5 1/2"	15.50#	T.D.	Sufficient to isolate all oil, gas, and water zones.

Proposed plans are to drill through the Bone Spring formation and test
for possible commercial production of oil and gas.

Attached is a copy of Liberty's lessee bond covering the lands described
under Lease No. NM-40256.

BOP sketch is attached.

IN ABOVE SPACE DESCRIBE PROPOSED PROGRAM: If proposal is to deepen or plug back, give data on present productive zone and proposed new productive zone. If proposal is to drill or deepen directionally, give pertinent data on subsurface locations and measured and true vertical depths. Give blowout preventer program, if any.

24.

SIGNED

Levy W. Franklin

TITLE

Agent

DATE

11/08/84

(This space for Federal or State office use)

PERMIT NO.

APPROVAL DATE

APPROVED BY

Don Work

TITLE

Asst. AREA

DATE

11-27-84

CONDITIONS OF APPROVAL, IF ANY:

APPROVAL SUBJECT TO
GENERAL REQUIREMENTS AND
SPECIAL STIPULATIONS

*See Instructions On Reverse Side

All distances must be from the outer boundaries of the Section.

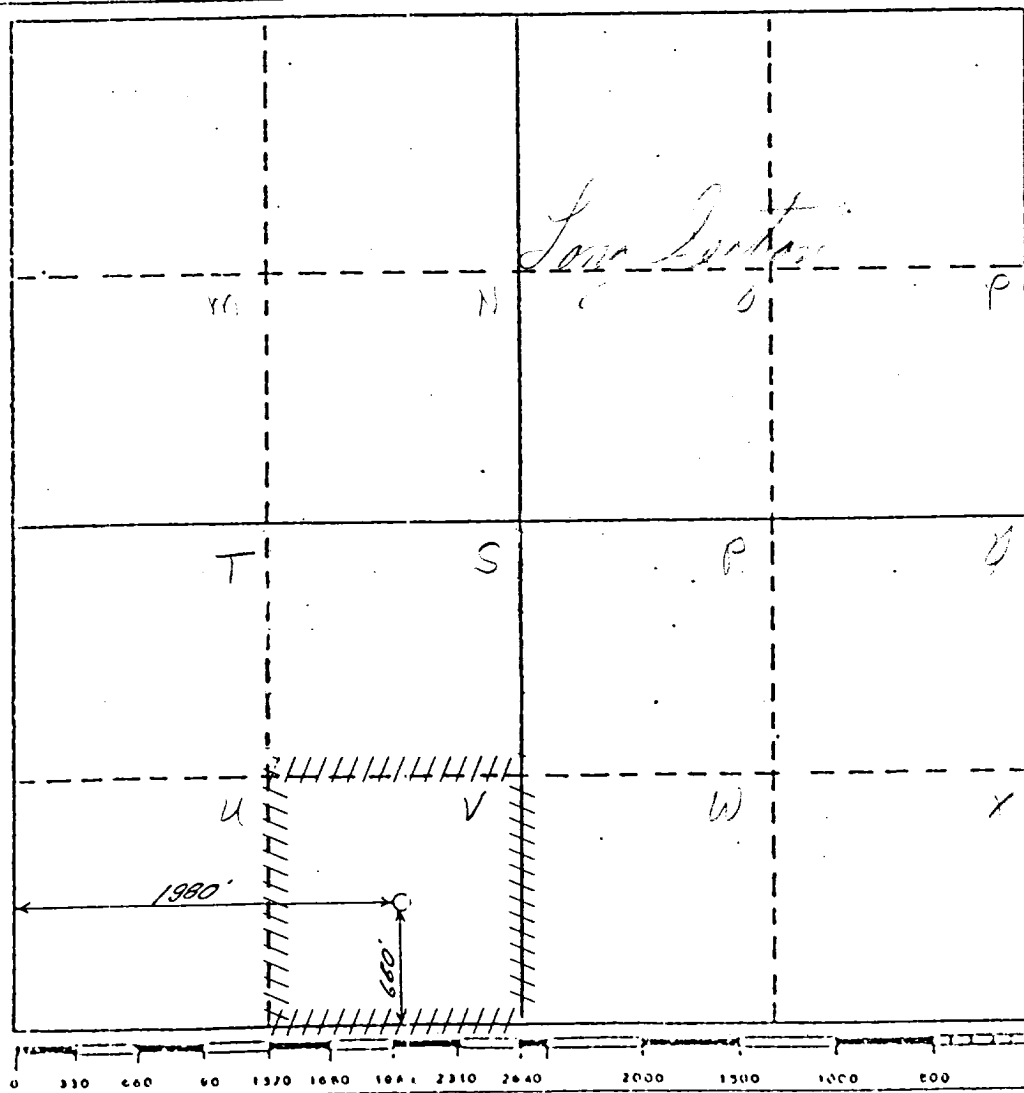
Operator Liberty Oil & Gas Corporation		Lease H.W. Stott - Federal		Well No. 2
Unit Letter	Section 1	Township 21 South	Range 27 East	County Eddy
Actual Postage Location of Well:				
660 feet from the South line and		1980 feet from the West line		
Ground Level Elev. 3207	Producing Formation Bone Spring	Pool Avalon East - BS	Dedicated Acreage: 40 Acres	

1. Outline the acreage dedicated to the subject well by colored pencil or hatchure marks on the plat below.
2. If more than one lease is dedicated to the well, outline each and identify the ownership thereof (both as to working interest and royalty).
3. If more than one lease of different ownership is dedicated to the well, have the interests of all owners been consolidated by communitization, unitization, force-pooling, etc?

☐ Yes ☐ No If answer is "yes," type of consolidation _____

If answer is "no," list the owners and tract descriptions which have actually been consolidated. (Use reverse side of this form if necessary.) _____

No allowable will be assigned to the well until all interests have been consolidated (by communitization, unitization, forced-pooling, or otherwise) or until a non-standard unit, eliminating such interests, has been approved by the Division.



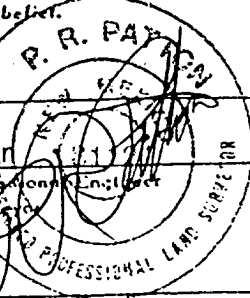
CERTIFICATION

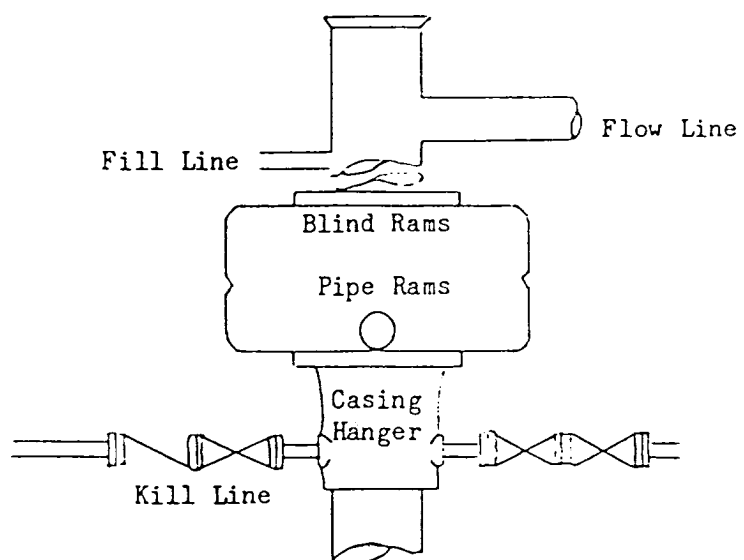
I hereby certify that the information contained herein is true and complete to the best of my knowledge and belief.

Name
Terry W. Franklin
Position
Agent
Company
Liberty Oil & Gas Corp.
Date
11/08/84

I hereby certify that the well location shown on this plat was plotted from field notes of actual surveys made by me or under my supervision, and that the same is true and correct to the best of my knowledge and belief.

6 Nov 84
Date Surveyed
P.R. Patton
Registered Professional Engineer
and/or Land Surveyor
8112
Certificate No.





BOP STACK

3000 psi working pressure

SUPPLEMENTAL DRILLING DATA

Liberty Oil & Gas Corp.
H.W. Stott Federal No. 2
1980' FWL & 660' FSL
Sec. 1, T21S, R27E
Eddy County, N.M.
NM - 40256

1. Surface Formation: Aluvium

2. Estimated Geological Marker Tops:

Capitan Reef	1350'
Delaware Sand	2835'
Bone Spring	5407'

3. Mineral Bearing Formation: Bone Spring - oil.

4. Proposed Casing and Cement Program:

Surface Casing: Set approximately 400', 13 3/8", 54.50#, J-55, ST&C casing and cement with 400 sx cement to surface.

Intermediate Casing: Set approximately 2550', 8 5/8", 24 & 28#, ST&C casing. Cement to surface using approximately 1150 sx of cement.

Production Casing: Set to total depth 5½", 15.5#, LT&C casing. Cement to isolate all oil, gas and water zones.

5. Pressure Control Equipment: A 3000 psi working pressure BOP will be used after 8 5/8" casing is set and cemented.

6. Testing, Logging, and Coring Programs:

Testing: no DST's are anticipated.

Logging: EPT, LDT-CNL, DLL-MSFL, NGT

Coring: None anticipated.

7. Auxiliary Equipment: A kelly cock will be installed on the rig floor while drilling operations are in progress.

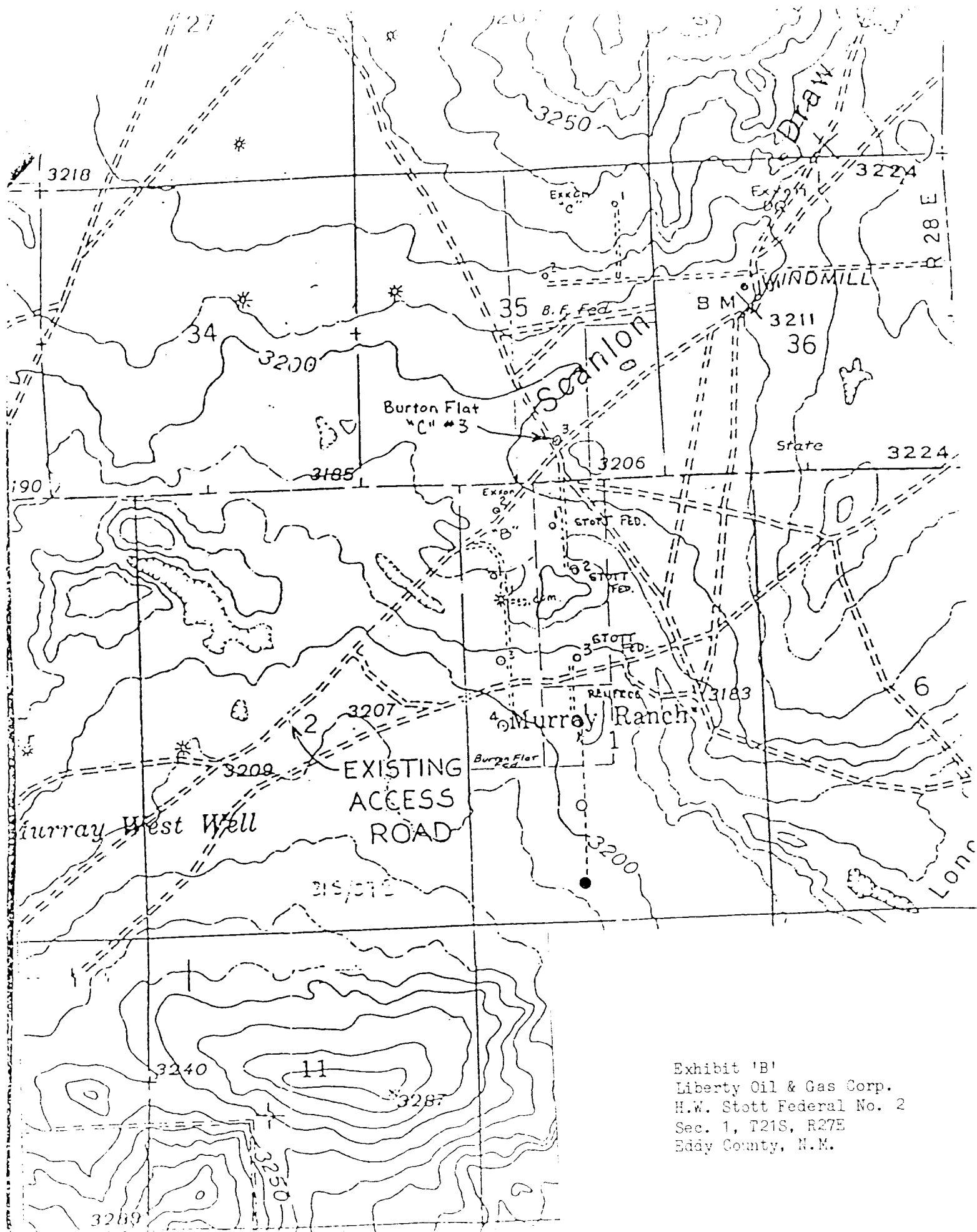
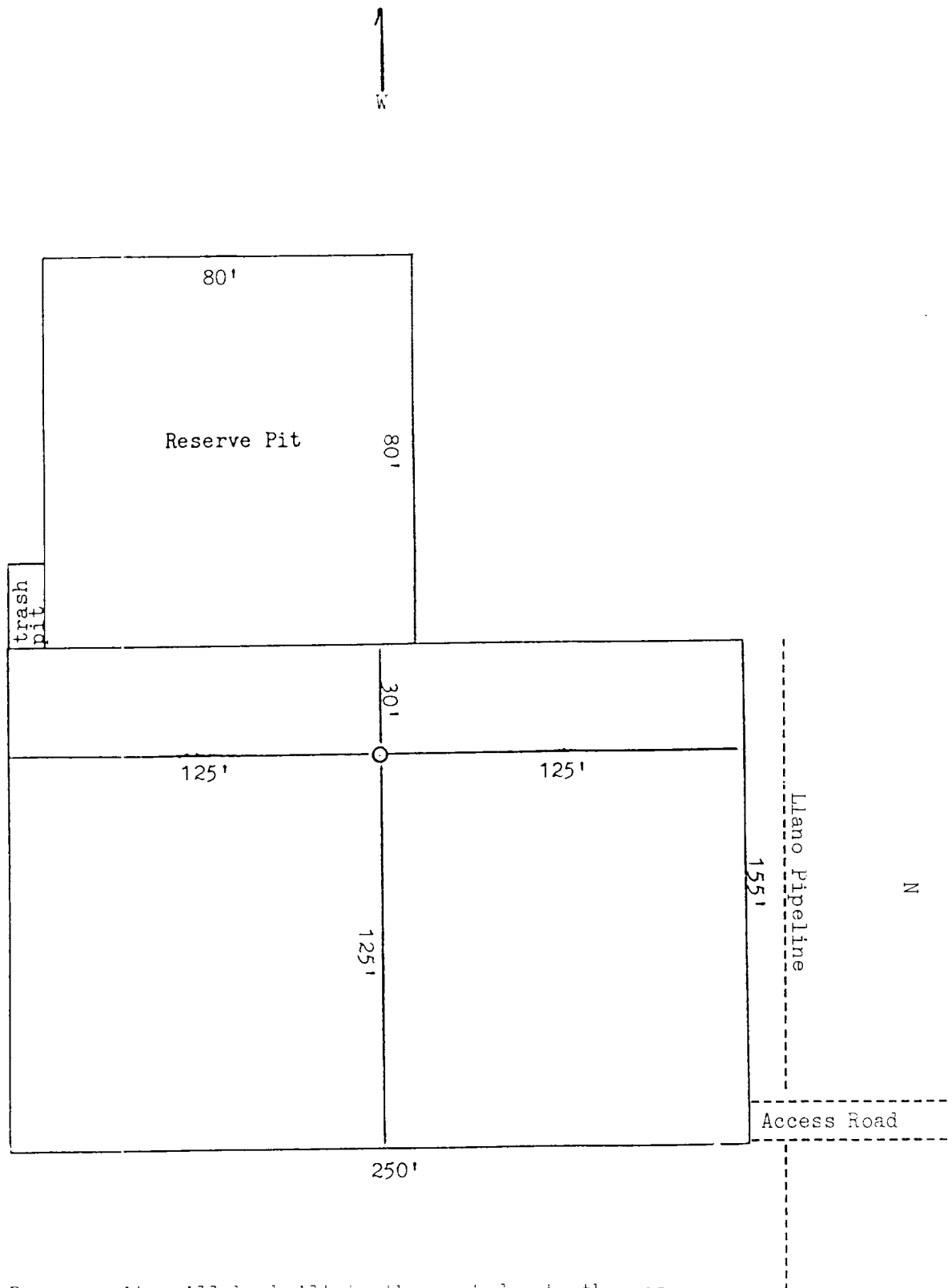


Exhibit 'B'
Liberty Oil & Gas Corp.
H.W. Stott Federal No. 2
Sec. 1, T21S, R27E
Eddy County, N.M.



Reserve pits will be built to the west due to the gas pipeline to the north of the center stake.