

NEW MEXICO OIL CONSERVATION COMMISSION
WELL LOCATION AND ACREAGE DEDICATION PLAT AUG 10 1992

Form C-102
Supersedes C-128
Effective 1-1-65

All distances must be from the outer boundaries of the Section.

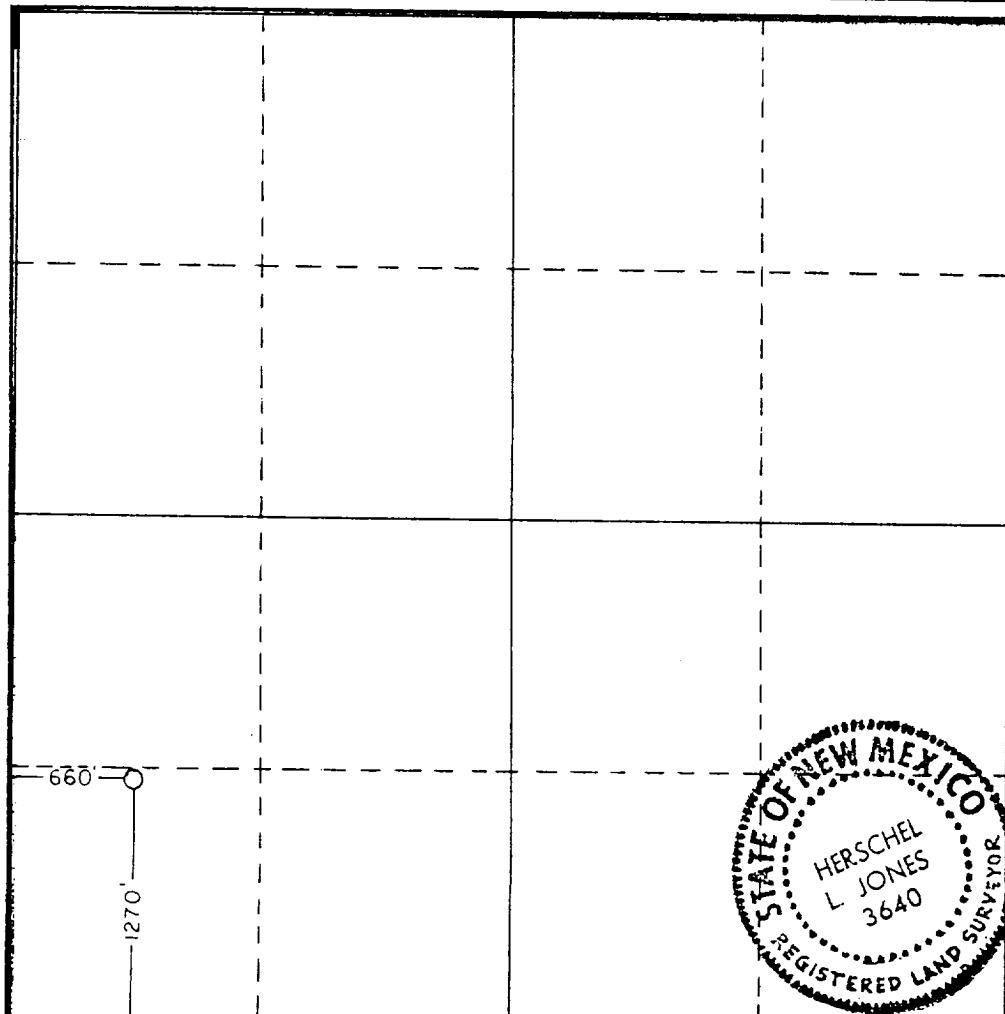
Operator Citation Oil & Gas		Lease IB 32 State		Well No. 1-Y
Unit Letter "M"	Section 32	Township 21 South	Range 24 East	County Eddy
Actual Footage Location of Well: 1270 feet from the South line and 660 feet from the West line				
Ground Level Elev. 4295.0	Producing Formation Upper Penn	Pool Indian Basin Upper Penn	Dedicated Acreage: 640 Acres	

- Outline the acreage dedicated to the subject well by colored pencil or hatchure marks on the plat below.
- If more than one lease is dedicated to the well, outline each and identify the ownership thereof (both as to working interest and royalty).
- If more than one lease of different ownership is dedicated to the well, have the interests of all owners been consolidated by communitization, unitization, force-pooling, etc?

☐ Yes ☐ No If answer is "yes," type of consolidation _____

If answer is "no," list the owners and tract descriptions which have actually been consolidated. (Use reverse side of this form if necessary.) _____

No allowable will be assigned to the well until all interests have been consolidated (by communitization, unitization, forced-pooling, or otherwise) or until a non-standard unit, eliminating such interests, has been approved by the Commission.



CERTIFICATION

I hereby certify that the information contained herein is true and complete to the best of my knowledge and belief.

Sharon Ward *Sharon Ward*

Name

Prod. Reg. Supv.

Position

Citation Oil & Gas Corp.

Company

August 5, 1992

Date

I hereby certify that the well location shown on this plat was plotted from field notes of actual surveys made by me or under my supervision, and that the same is true and correct to the best of my knowledge and belief.

Date Surveyed

12-5-84

Registered Professional Engineer and/or Land Surveyor

Certificate No.

3640

