

NEW MEXICO OIL CONSERVATION COMMISS.
WELL LOCATION AND ACREAGE DEDICATION PLAT

Form C-102
Supersedes C-128
Effective 1-1-65

All distances must be from the outer boundaries of the Section.

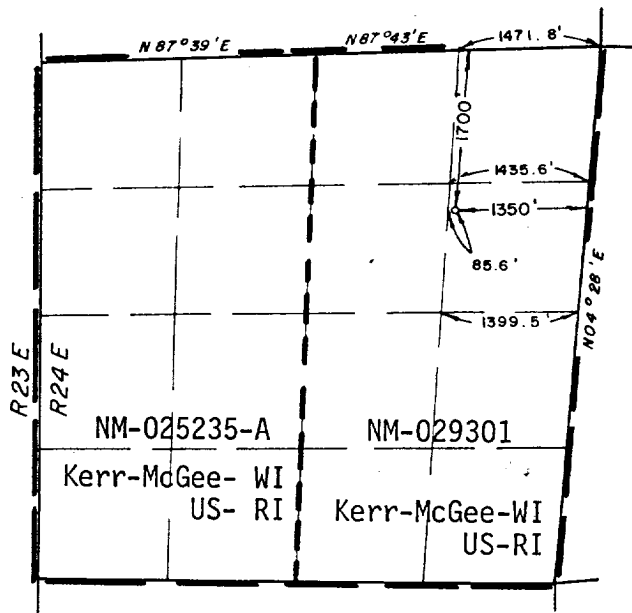
Operator KERR-MC GEE CORP. OIL & GAS DIVISION			Lease MARTHA CREEK GAS COM.		Well No. 2
Unit Letter H	Section 30	Township 21S	Range 24E	County EDDY	
Actual Footage Location of Well: 1700 feet from the NORTH line and 1350 feet from the EAST line					
Ground Level Elev. 3742	Producing Formation MORROW	Pool INDIAN BASIN MORROW GAS	Dedicated Acreage: 688.89 Acres		

1. Outline the acreage dedicated to the subject well by colored pencil or hachure marks on the plat below.
2. If more than one lease is dedicated to the well, outline each and identify the ownership thereof (both as to working interest and royalty).
3. If more than one lease of different ownership is dedicated to the well, have the interests of all owners been consolidated by communitization, unitization, force-pooling, etc?

☒ Yes ☐ No If answer is "yes," type of consolidation COMMUNITIZATION AGREEMENT SW-258

If answer is "no," list the owners and tract descriptions which have actually been consolidated. (Use reverse side of this form if necessary.)

No allowable will be assigned to the well until all interests have been consolidated (by communitization, unitization, forced-pooling, or otherwise) or until a non-standard unit, eliminating such interests, has been approved by the Commission.



SHOWING SECTION 30,
T.21 S., R.24 E.

Scale: 1" = 2000'



CERTIFICATION

I hereby certify that the information contained herein is true and complete to the best of my knowledge and belief.

Name Arthur R. Brown
Position
Agent

Company
KERR-McGEE CORPORATION

Date
JANUARY 2, 1985

I hereby certify that the well location shown on this plat was plotted from field notes of actual surveys made by me or under my supervision, and that the same is true and correct to the best of my knowledge and belief.

Date Surveyed
11/19/84

Registered Professional Engineer and/or Land Surveyor

Ronald J. Eidson
Certificate No. JOHN W. WEST 676

Ronald J. Eidson 3239