

STATE OF NEW MEXICO
ENERGY AND MINERALS DEPARTMENT

OIL CONSERVATION DIVISION
P. O. BOX 2048
SANTA FE, NEW MEXICO 87501

RECEIVED

MAR 11 1985

O. C. D.
ARTESIA, OFFICE

Form C-101

Rev. 10-1-79

30-015-25217

NO. OF COPIES RECEIVED	
DISTRIBUTION	
SANTA FE	✓
FILE	✓
U.S.G.S.	2
LAND OFFICE	
OPERATOR	✓

5A. Indicate Type of Lease
STATE ☐ FEE ☒

5. State Oil & Gas Lease No.

7. Unit Agreement Name

8. Farm or Lease Name

Baseball Park

9. Well No.

2

10. Field and Pool, or Wildcat

S. Carlsbad Delaware

12. County

Eddy

APPLICATION FOR PERMIT TO DRILL, DEEPEN, OR PLUG BACK

a. Type of Work
DRILL ☒ DEEPEN ☐ PLUG BACK ☐

b. Type of Well
OIL WELL ☒ GAS WELL ☐ OTHER ☐ SINGLE ZONE ☐ MULTIPLE ZONE ☐

c. Name of Operator
Ray Westall

d. Address of Operator
Box 4, Loco Hills, New Mexico 88255

e. Location of Well
UNIT LETTER P LOCATED 990 FEET FROM THE South LINE
NO 660 FEET FROM THE East LINE OF SEC. 24 TWP. 22S RGE. 26E NMPM

15. Proposed Depth 4600
16A. Formation Delaware
16B. Rotary or C.T. Rotary
17. Elevation (Show whether ft, kl, etc.) 3168
18A. Find & Status Prev. Prod Blanket
18B. Drilling Contractor WEK
19. Approx. Date Work will start ASAP

3. PROPOSED CASING AND CEMENT PROGRAM

SIZE OF HOLE	SIZE OF CASING	WEIGHT PER FOOT	SETTING DEPTH	SACKS OF CEMENT	EST. TOP
12 1/4"	8 5/8"	24 1/2"	400	Circulate	
8"	5 1/2"	17 1/2"	4600	Circulate	

We propose to drill and test the Delaware formation. Approximately 400' of 8 5/8" surface casing will be set to shut off gravel and caving. 5 1/2" production casing will be run, perforated and frac'd for production.

BOP PROGRAM: A 10" Series 900 Shaffer Type F Dougle BOP will be used in drilling this well.

MUD PROGRAM: Fresh water will be used to drill the surface. Brine water to within 150' of TD and mud up to log and run casing.

APPROVAL VALID FOR 180 DAYS
PERMIT EXPIRES 9-11-85
UNLESS DRILLING UNDERWAY

ABOVE SPACE DESCRIBE PROPOSED PROGRAM; IF PROPOSAL IS TO DEEPEN OR PLUG BACK, GIVE DATA ON PRESENT PRODUCTIVE ZONE AND PROPOSED NEW PRODUCTION ZONE. GIVE BLOW-OUT PREVENTER PROGRAM, IF ANY.

I hereby certify that the information above is true and complete to the best of my knowledge and belief.

Signed Ray Westall Title Operator Date 3/8/85

(This space for State Use)

APPROVED BY M. L. Williams TITLE OIL AND GAS INSPECTOR DATE MAR 12 1985

CONDITIONS OF APPROVAL, IF ANY:

NE MEXICO OIL CONSERVATION COMMISS.
WELL LOCATION AND ACREAGE DEDICATION PLAT

Form C-102
Supersedes C-128
Effective 1-1-65

All distances must be from the outer boundaries of the Section.

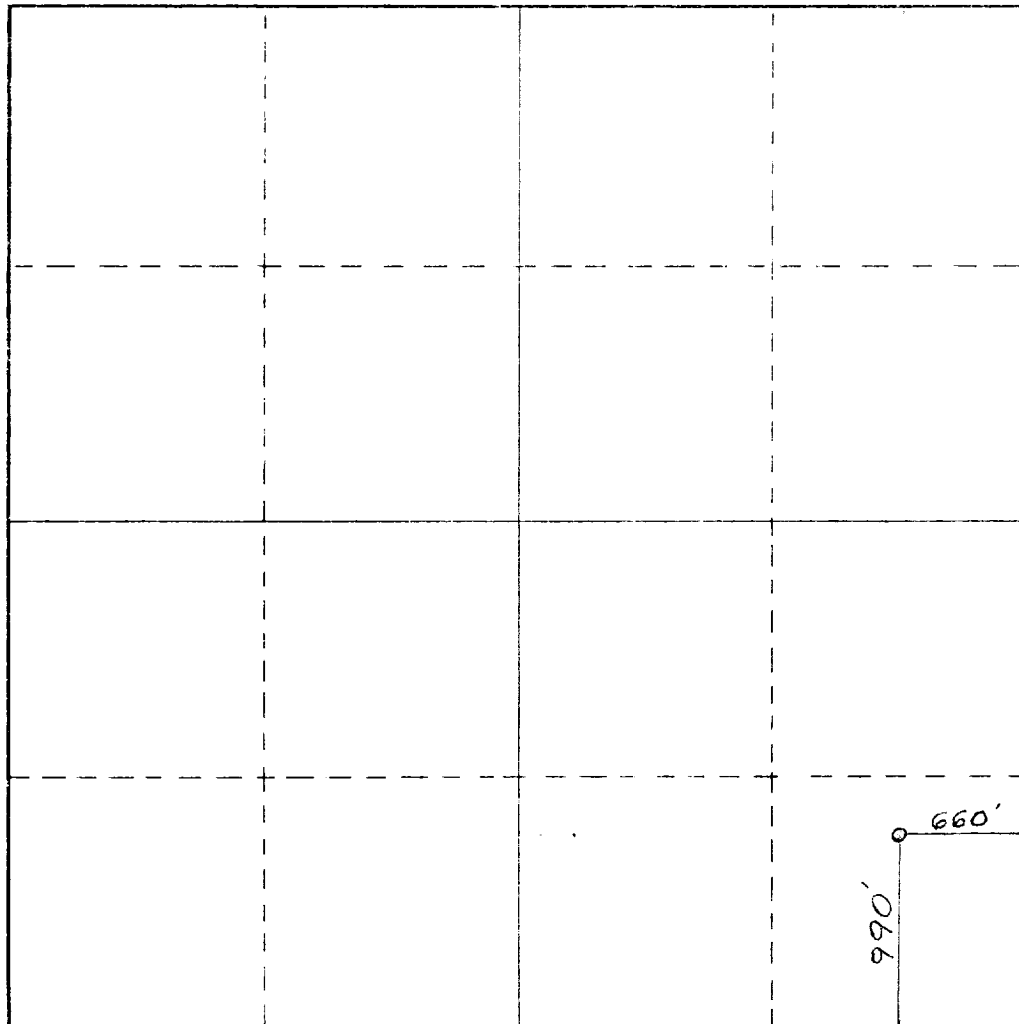
Operator RAY WESTALL			Lease Baseball Park			Well No. 2		
Unit Letter P	Section 24	Township 22 South	Range 26 East	County Eddy				
Actual Footage Location of Well: 990 feet from the South line and 660 feet from the East line								
Ground Level Elev. 3168.	Producing Formation Delaware		Pool S. to 1st 1/2 Sec. 24, T. 22S., R. 26E., Co. Eddy			Dedicated Acreage: 40 Acres		

1. Outline the acreage dedicated to the subject well by colored pencil or hachure marks on the plat below.
2. If more than one lease is dedicated to the well, outline each and identify the ownership thereof (both as to working interest and royalty).
3. If more than one lease of different ownership is dedicated to the well, have the interests of all owners been consolidated by communitization, unitization, force-pooling, etc?

☐ Yes ☐ No If answer is "yes," type of consolidation _____

If answer is "no," list the owners and tract descriptions which have actually been consolidated. (Use reverse side of this form if necessary.) _____

No allowable will be assigned to the well until all interests have been consolidated (by communitization, unitization, forced-pooling, or otherwise) or until a non-standard unit, eliminating such interests, has been approved by the Commission.



CERTIFICATION

I hereby certify that the information contained herein is true and complete to the best of my knowledge and belief.

Name
Ray Westall
Position
Operator
Company

Date
3-1-85

I hereby certify that the well location shown on this plat was plotted from field notes of actual surveys made by me or under my supervision, and that the same is true and correct to the best of my knowledge and belief.

Date Surveyed
March 4, 1985

Registered Professional Engineer and/or Land Surveyor

Dan R. Reddy
Certificate No.

NM PE&LS NO. 5412

