

# FM OIL CONS. COMMISSION

Draw: DD

Artesia, NM 88210

SUBMIT IN TRI. DATE\*  
(Other instructions on reverse side)

Form approved.  
Budget Bureau No. 1004-0136  
Expires August 31, 1985

For RECEIVED BY  
(November 1983)  
(formerly 9-331C)

APR 30 1985

## UNITED STATES DEPARTMENT OF THE INTERIOR BUREAU OF LAND MANAGEMENT

### APPLICATION FOR PERMIT TO DRILL, DEEPEN, OR PLUG BACK

DRILL ☒

DEEPEN ☐

PLUG BACK ☐

b. TYPE OF WELL

OIL WELL ☒

GAS WELL ☐

OTHER

SINGLE ZONE ☒

MULTIPLE ZONE ☐

2. NAME OF OPERATOR

Canon Energy, Inc.

3. ADDRESS OF OPERATOR

P.O. Box 2491, Midland, Texas 79702

4. LOCATION OF WELL (Report location clearly and in accordance with any State requirements.)\*

At surface

2201' FSL & 556' FWL NW/4 SW/4 Unit letter L

At proposed prod. zone Same

14. DISTANCE IN MILES AND DIRECTION FROM NEAREST TOWN OR POST OFFICE\*

8 miles west of Carlsbad, New Mexico

10. DISTANCE FROM PROPOSED\*

LOCATION TO NEAREST PROPERTY OR LEASE LINE, FT. (Also to nearest drlg. unit line, if any)

556'

18. DISTANCE FROM PROPOSED LOCATION\*

TO NEAREST WELL, DRILLING, COMPLETED, OR APPLIED FOR, ON THIS LEASE, FT.

920' SE

21. ELEVATIONS (Show whether DF, RT, GR, etc.)

3597' GR

23. PROPOSED CASING AND CEMENTING PROGRAM

SIZE OF HOLE	SIZE OF CASING	WEIGHT PER FOOT	SETTING DEPTH	QUANTITY OF CEMENT
17 1/2"	13 3/8"	54.5#	200'	Sufficient to Circulate
12 1/4"	8 5/8"	24.0#	1500'	Sufficient to Circulate
7 7/8"	5 1/2"	15.5#	T.D.	Sufficient to isolate all oil, gas, and water zones

Proposed plans are to drill to the Bone Spring formation and test the Bone Spring and intermediate formations for possible commercial production of oil and gas.

Designation of Operator from W.G. Abbott(Lessee) will be filed under a separate cover.

A \$25,000.00 Statewide Bond will cover subject well.

LEASE EXPIRES MAY 31, 1985.

IN ABOVE SPACE DESCRIBE PROPOSED PROGRAM: If proposal is to deepen or plug back, give data on present productive zone and proposed new productive zone. If proposal is to drill or deepen directionally, give pertinent data on subsurface locations and measured and true vertical depths. Give blowout preventer program, if any.

24.

SIGNED

*Leary W. Franklin*

TITLE

Agent

DATE 4/5/85

(This space for Federal or State office use)

PERMIT NO.

APPROVAL DATE

Orig: Sgd. Charles S. Doherty

APPROVED BY

*Area Manager*

TITLE

DATE

4-29-85

CONDITIONS OF APPROVAL, IF ANY:

APPROVAL SUBJECT TO  
GENERAL REQUIREMENTS AND  
SPECIAL STIPULATIONS

\*See Instructions On Reverse Side

18 U.S.C. Section 1001, makes it a crime for any person knowingly and willfully to make to any department or agency of the United States any false, fictitious or fraudulent statements or representations as to any matter within its jurisdiction.

N MEXICO OIL CONSERVATION COMMISS  
WELL LOCATION AND ACREAGE DEDICATION PLAT

Form C-102  
Supersedes C-128  
Effective 1-1-65

All distances must be from the outer boundaries of the Section.

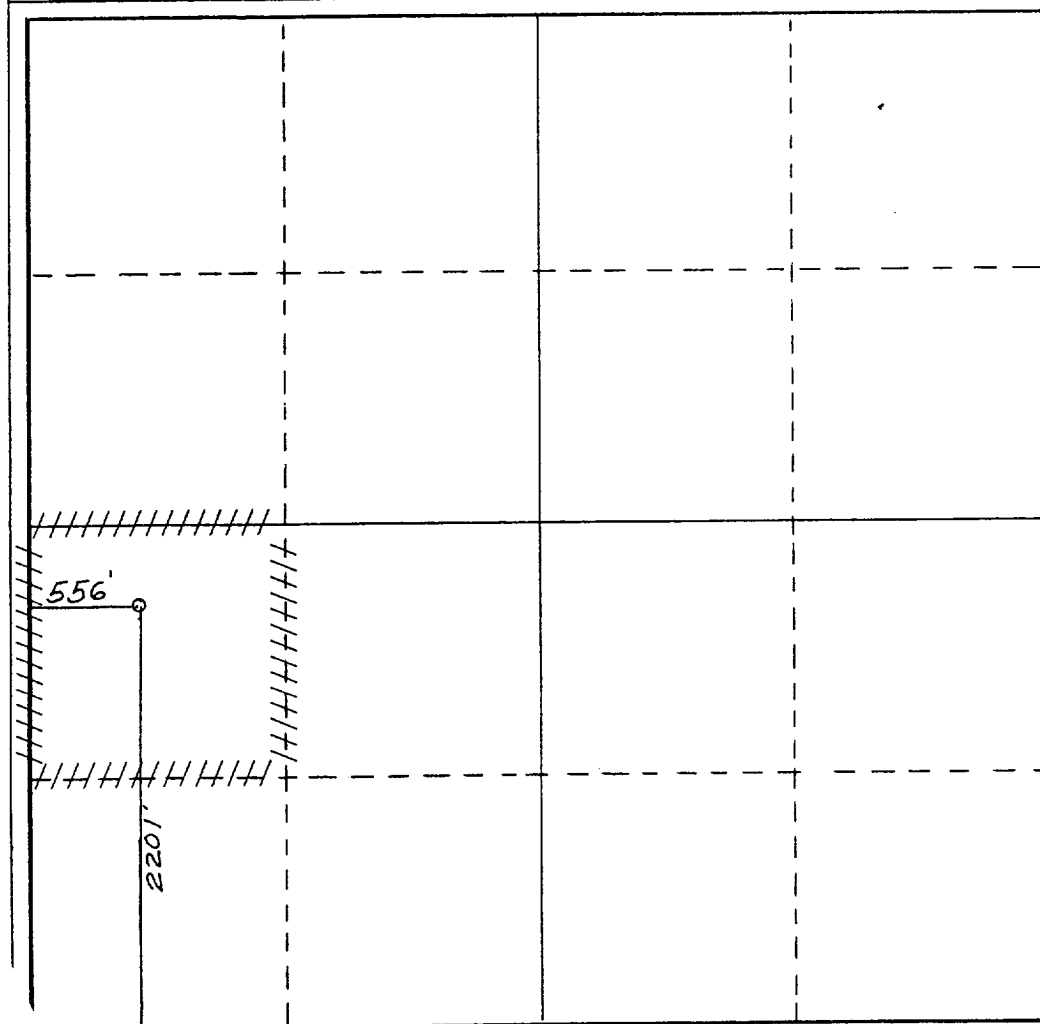
Operator <b>CANON ENERGY INC.</b>			Lease <b>Canon Abbott Federal</b>		Well No. <b>1</b>
Unit Letter <b>L</b>	Section <b>29</b>	Township <b>21 South</b>	Range <b>25 East</b>	County <b>Eddy</b>	
Actual Footage Location of Well: <b>2201</b> feet from the <b>South</b> line and <b>556</b> feet from the <b>West</b> line					
Ground Level Elev. <b>3597.</b>	Producing Formation <b>Bone Spring</b>		Pool <b>Wildcat</b>		Dedicated Acreage: <b>40</b> Acres

1. Outline the acreage dedicated to the subject well by colored pencil or hachure marks on the plat below.
2. If more than one lease is dedicated to the well, outline each and identify the ownership thereof (both as to working interest and royalty).
3. If more than one lease of different ownership is dedicated to the well, have the interests of all owners been consolidated by communitization, unitization, force-pooling, etc?

☐ Yes ☐ No If answer is "yes," type of consolidation \_\_\_\_\_

If answer is "no," list the owners and tract descriptions which have actually been consolidated. (Use reverse side of this form if necessary.) \_\_\_\_\_

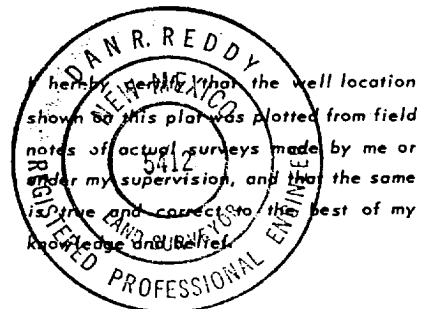
No allowable will be assigned to the well until all interests have been consolidated (by communitization, unitization, forced-pooling, or otherwise) or until a non-standard unit, eliminating such interests, has been approved by the Commission.



**CERTIFICATION**

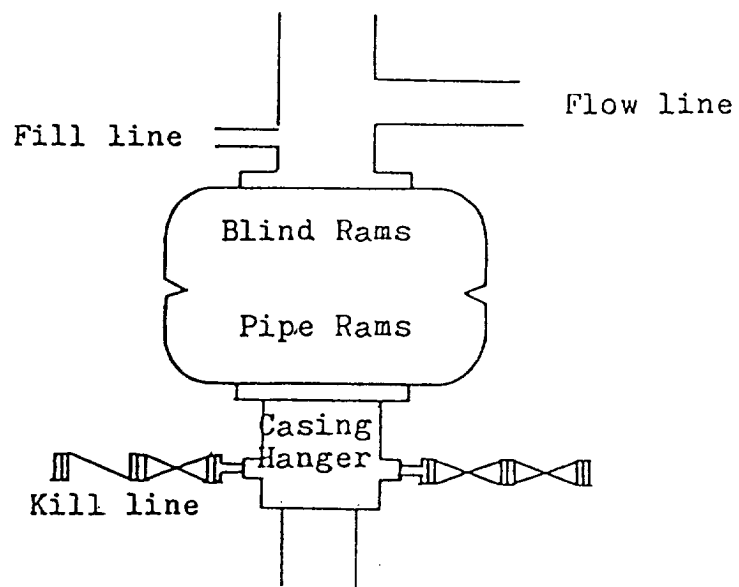
*I hereby certify that the information contained herein is true and complete to the best of my knowledge and belief.*

Name  
**Terry W. Franklin**  
Position  
**Agent**  
Company  
**Canon Energy, Inc.**  
Date  
**4/5/85**



Date Surveyed  
**April 1, 1985**  
Registered Professional Engineer and/or Land Surveyor  
*Dan R. Reddy*  
Certificate No.  
**NM PE&LS NO. 5412**

330 660 990 1320 1650 1980 2310 2640 2970 3300 3630 3960 4290 4620 4950 5280 5610 5940 6270 6600



Blowout Preventer  
3000 psi working pressure

## SUPPLEMENTAL DRILLING DATA

Canon Energy, Inc.  
Canon Abbott Federal No. 1  
2201' FSL & 556' FWL  
Sec. 29, T21S, R25E  
Eddy County, N.M.  
NM - 25345

1. Surface Formation: Permian.

2. Estimated Geological Marker Tops:

Capitan Reef	Surface
Delaware Sand	1475'
Bone Spring	3560'

3. Estimated Depths to Oil, Gas and Water:

Water	190'
Oil or Gas	Delaware 1475 - 3450'
	Bone Spring 3670' - 3720'

4. Proposed Casing and Cement Program:

Surface Casing: Set approximately 200', 13 3/8", 54.5#, J-55 ST&C casing. Cement sufficient to circulate cement to surface.

Intermediate Casing: Set approximately 1500', 8 5/8", 24.0#, J-55 ST&C casing. Cement sufficient to circulate cement to surface.

Production Casing: Set to total depth, 5 1/2", 15.5#, J-55 ST&C casing. Cement to isolate all oil, gas and water zones.

5. Pressure Control Equipment: A 3000 P.S.I. working pressure B.O.P. will be installed after 8 5/8" casing is set and cemented.

6. Testing, Logging and Coring Programs:

Testing: None.

Logging: DLL - FDC - CNL - GR - EPT. Mud logging unit from 1500' to total depth.

7. Auxiliary Equipment: A kelly cock will be installed on the rig floor while drilling operations are in progress.



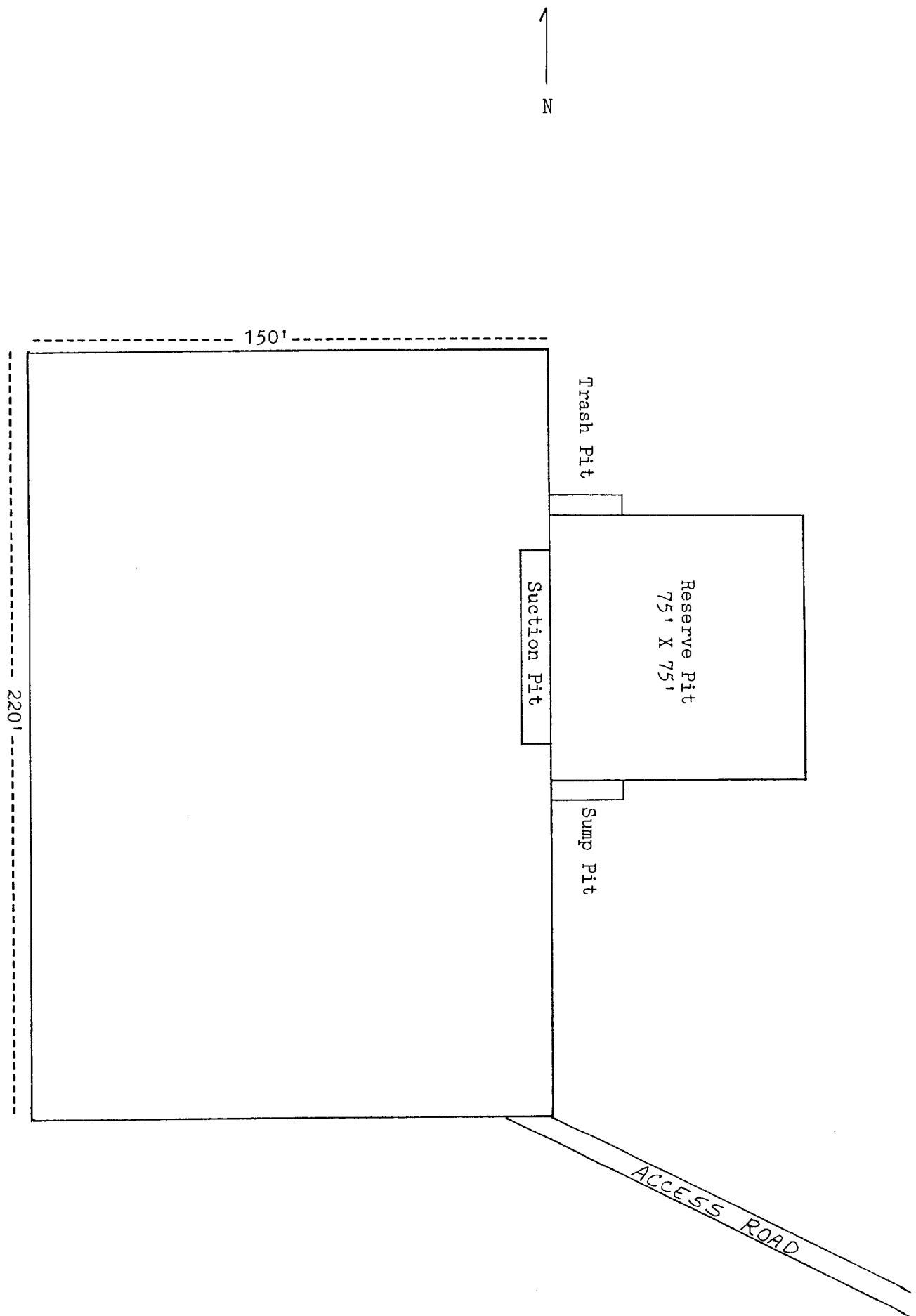


Exhibit 'C'  
Canon Energy, Inc.  
Canon Abbott Federal No. 1  
Sec. 29, T21S, R25E  
Eddy County, N.M.