

Form 3160-3
(November 1983)
(form 10-3310)

Drawer DD
Artesia, NM 88210

SUBMIT IN TRIPPLICATE*
(Other instructions on
reverse side)

Form approved.
Budget Bureau No. 1004-0136
Expires August 31, 1985

UNITED STATES
DEPARTMENT OF THE INTERIOR
BUREAU OF LAND MANAGEMENT

APPLICATION FOR PERMIT TO DRILL, DEEPEN, OR PLUG BACK

1a. TYPE OF WORK

DRILL ☒

DEEPEN ☐

PLUG BACK ☐

b. TYPE OF WELL

OIL
WELL ☒

GAS
WELL ☐

OTHER

SINGLE
ZONE ☒

MULTIPLE
ZONE ☐

2. NAME OF OPERATOR

J.M. HUBER CORPORATION

3. ADDRESS OF OPERATOR

1900 WILCO BUILDING, MIDLAND, TEXAS 79701

4. LOCATION OF WELL (Report location clearly and in accordance with any State requirements.)*
At surface

2310' FSL AND 990' FEL OF SECTION 12

At proposed prod. zone

14. DISTANCE IN MILES AND DIRECTION FROM NEAREST TOWN OR POST OFFICE*

7 MILES NORTHEAST OF CARLSBAD, NEW MEXICO

15. DISTANCE FROM PROPOSED*
LOCATION TO NEAREST
PROPERTY OR LEASE LINE, FT.
(Also to nearest drlg. unit line, if any)

330'

16. NO. OF ACRES IN LEASE

200

17. NO. OF ACRES ASSIGNED
TO THIS WELL

40

18. DISTANCE FROM PROPOSED LOCATION*
TO NEAREST WELL, DRILLING, COMPLETED,
OR APPLIED FOR, ON THIS LEASE, FT.

-

19. PROPOSED DEPTH

3100'

20. ROTARY OR CABLE TOOLS

ROTARY

21. ELEVATIONS (Show whether DF, RT, GR, etc.)

3183.3' GL

22. APPROX. DATE WORK WILL START*

UPON APPROVAL

23.

PROPOSED CASING AND CEMENTING PROGRAM

SIZE OF HOLE	SIZE OF CASING	WEIGHT PER FOOT	SETTING DEPTH	QUANTITY OF CEMENT
17-1/2"	13-3/8"	48#	500'	SUFFICIENT TO CIRCULATE
11"	8-5/8"	32#	2500'	SUFFICIENT TO CIRCULATE
7-7/8"	5-1/2"	15.5#	3100'	250 SACKS

AFTER SETTING PRODUCTION CASING, PAY ZONE WILL BE PERFORATED AND
STIMULATED AS NECESSARY.

SEE ATTACHED FOR: SUPPLEMENTAL DRILLING DATA
BOP SKETCH
SURFACE USE AND OPERATIONS PLAN

IN ABOVE SPACE DESCRIBE PROPOSED PROGRAM: If proposal is to deepen or plug back, give data on present productive zone and proposed new productive zone. If proposal is to drill or deepen directionally, give pertinent data on subsurface locations and measured and true vertical depths. Give blowout preventer program, if any.

24.

SIGNED

Arthur R. Brown

TITLE

Agent

DATE

April 26, 1985

(This space for Federal or State office use)

PERMIT NO.

APPROVAL DATE

APPROVED BY

TITLE

DATE

APPROVAL SUBJECT TO
GENERAL REQUIREMENTS AND
SPECIAL REGULATIONS

ATTACHED

*See Instructions On Reverse Side

Title 18 U.S.C. Section 1001, makes it a crime for any person knowingly and willfully to make to any department or agency of the United States any false, fictitious or fraudulent statements or representations as to any matter within its jurisdiction.

NEW MEXICO OIL CONSERVATION COMMISSION
WELL LOCATION AND ACREAGE DEDICATION - LAT

Form C-102
Supersedes C-128
Effective 1-1-65

All distances must be from the outer boundaries of the Section.

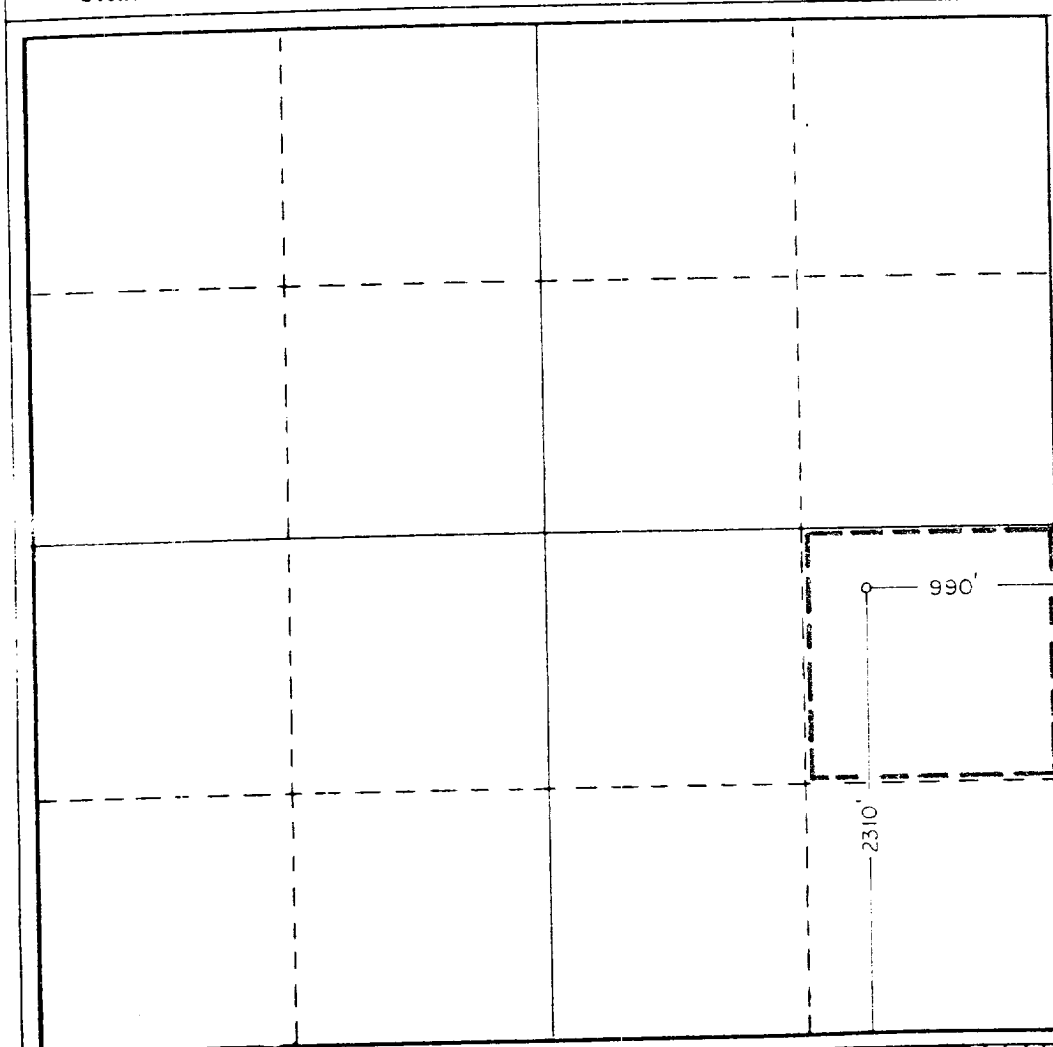
Operator J. M. HUBER CORP.			Lease FEDERAL 12		Well No. 1
Unit Letter I	Section 12	Township 21S	Range 27E	County EDDY	
Actual Footage Location of Well: 2310 feet from the SOUTH line and 990 feet from the EAST line					
Ground Level Elev. 3183.3	Producing Formation DELAWARE		Pool NORTHWEST FENTON DELAWARE		Dedicated Acreage: 40 Acres

1. Outline the acreage dedicated to the subject well by colored pencil or hachure marks on the plat below.
2. If more than one lease is dedicated to the well, outline each and identify the ownership thereof (both as to working interest and royalty).
3. If more than one lease of different ownership is dedicated to the well, have the interests of all owners been consolidated by communitization, unitization, force-pooling, etc?

☐ Yes ☐ No If answer is "yes," type of consolidation _____

If answer is "no," list the owners and tract descriptions which have actually been consolidated. (Use reverse side of this form if necessary.) _____

No allowable will be assigned to the well until all interests have been consolidated (by communitization, unitization, forced-pooling, or otherwise) or until a non-standard unit, eliminating such interests, has been approved by the Commission.



CERTIFICATION

I hereby certify that the information contained herein is true and complete to the best of my knowledge and belief.

Name Arthur R. Brown

Position
Agent

Company
J.M. HUBER CORPORATION

Date
April 26, 1985

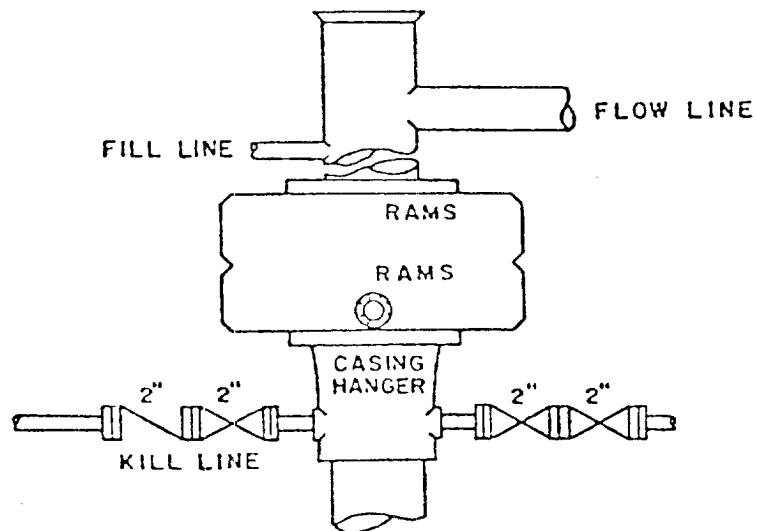
I hereby certify that the well location shown on this plat was plotted from field notes of actual surveys made by me or under my supervision, and that the same is true and correct to the best of my knowledge and belief.

Date Surveyed
4/10/85

Registered Professional Engineer
and/or Land Surveyor

John W. West

Certificate No. JOHN W. WEST, 676
RONALD J. EIDSON, 3239



BOP STACK

3000 PSI WORKING PRESSURE

BOP ARRANGEMENT

SUPPLEMENTAL DRILLING DATA

J.M. HUBER CORPORATION

WELL NO.1 FEDERAL 12

1. SURFACE FORMATION: Rustler Formation.

2. ESTIMATED TOPS OF GEOLOGICAL MARKERS:

Top Reef	978'
Base Reef	2495'
Top Delaware Pay	2953'

3. ANTICIPATED POSSIBLE HYDROCARBON BEARING ZONES:

Delaware	Oil
----------	-----

4. PROPOSED CASING AND CEMENTING PROGRAM:

CASING SIZE	SETTING DEPTH		WEIGHT	GRADE	JOINT
	FROM	TO			
13-3/8"	0	500'	48#	H-40	STC
8-5/8"	0	2500'	32#	K-55	STC
5-1/2"	0	3100'	15.5#	K-55	STC

Equivalent or adequate grades and weights of casing may be substituted at time casing is run, depending on availability.

13-3/8" casing will be cemented with approximately 500 sacks of Class "C" cement with 2% CaCl. Cement to circulate.

8-5/8" casing will be cemented with sufficient Light cement, tailed-in with 200 sacks of Class "C", to circulate.

5-1/2" casing will be cemented with 250 sacks of Class "C".

5. PRESSURE CONTROL EQUIPMENT:

Blowout prevention equipment will consist of a dual, 3000 psi working pressure, ram type preventer.

A BOP sketch is attached.

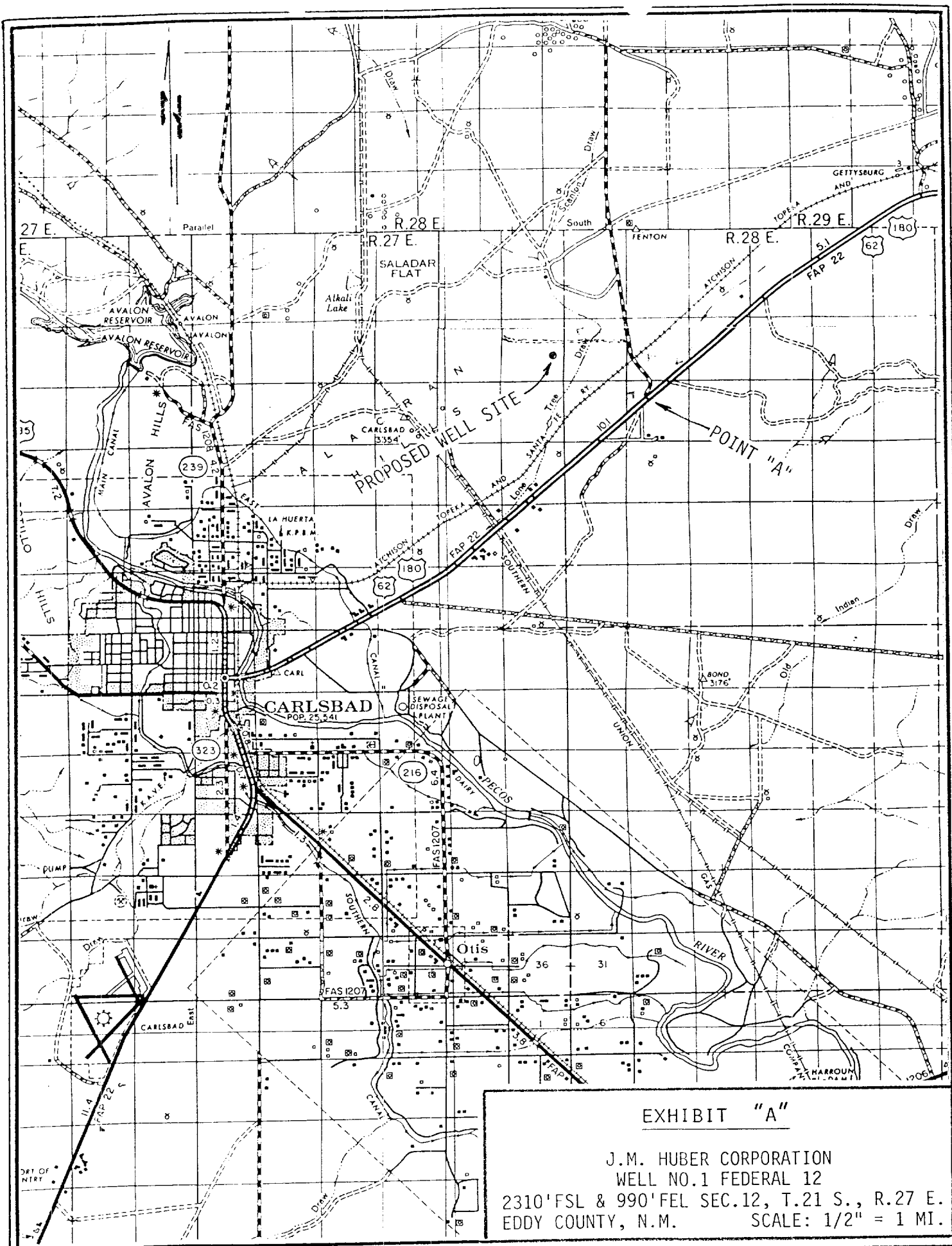


EXHIBIT "A"

J.M. HUBER CORPORATION
WELL NO.1 FEDERAL 12
2310'FSL & 990'FEL SEC.12, T.21 S., R.27 E.
EDDY COUNTY, N.M. SCALE: 1/2" = 1 MI.

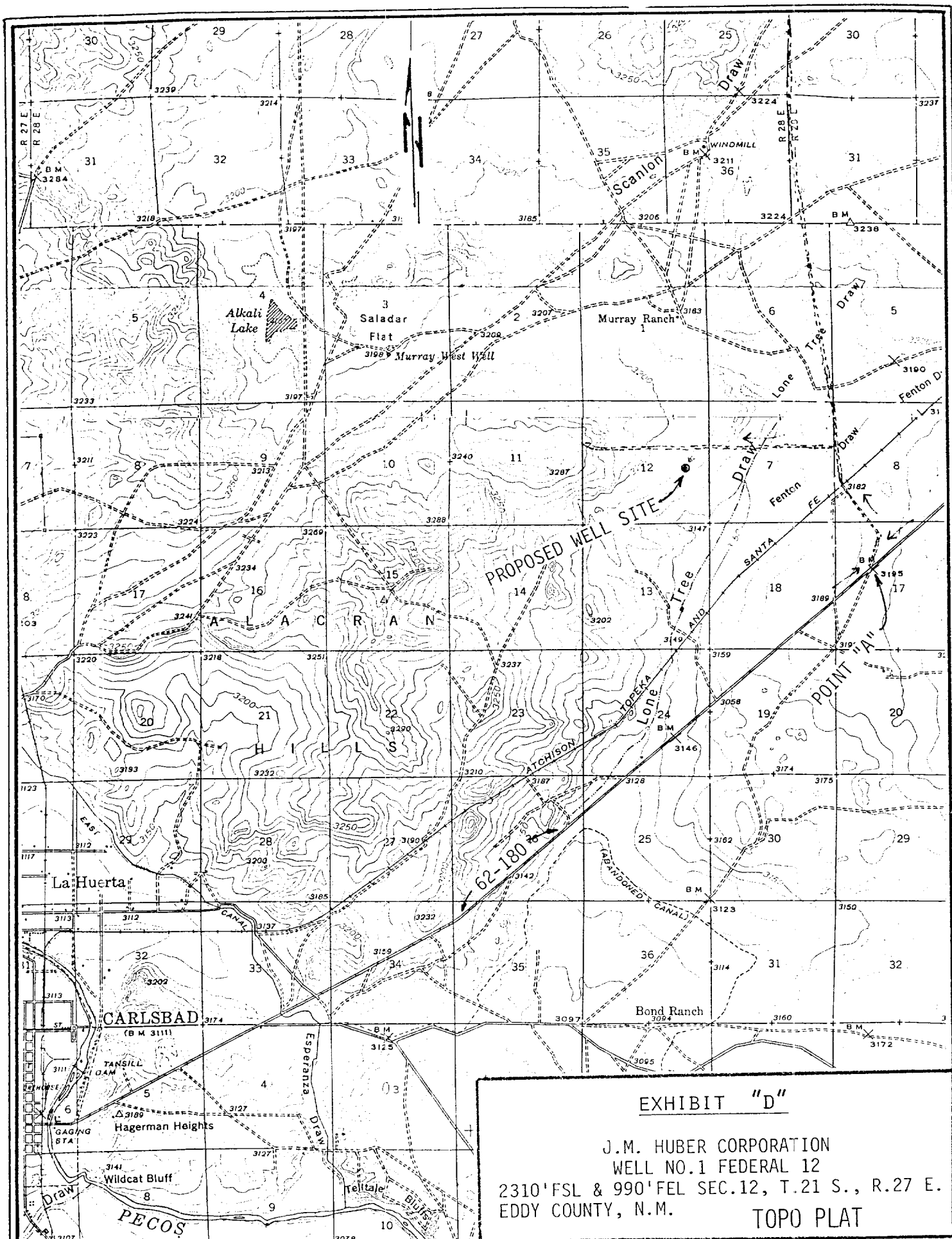


EXHIBIT "D"

J.M. HUBER CORPORATION
WELL NO.1 FEDERAL 12
2310' FSL & 990' FEL SEC.12, T.21 S., R.27 E.
EDDY COUNTY, N.M.
TOPO PLAT

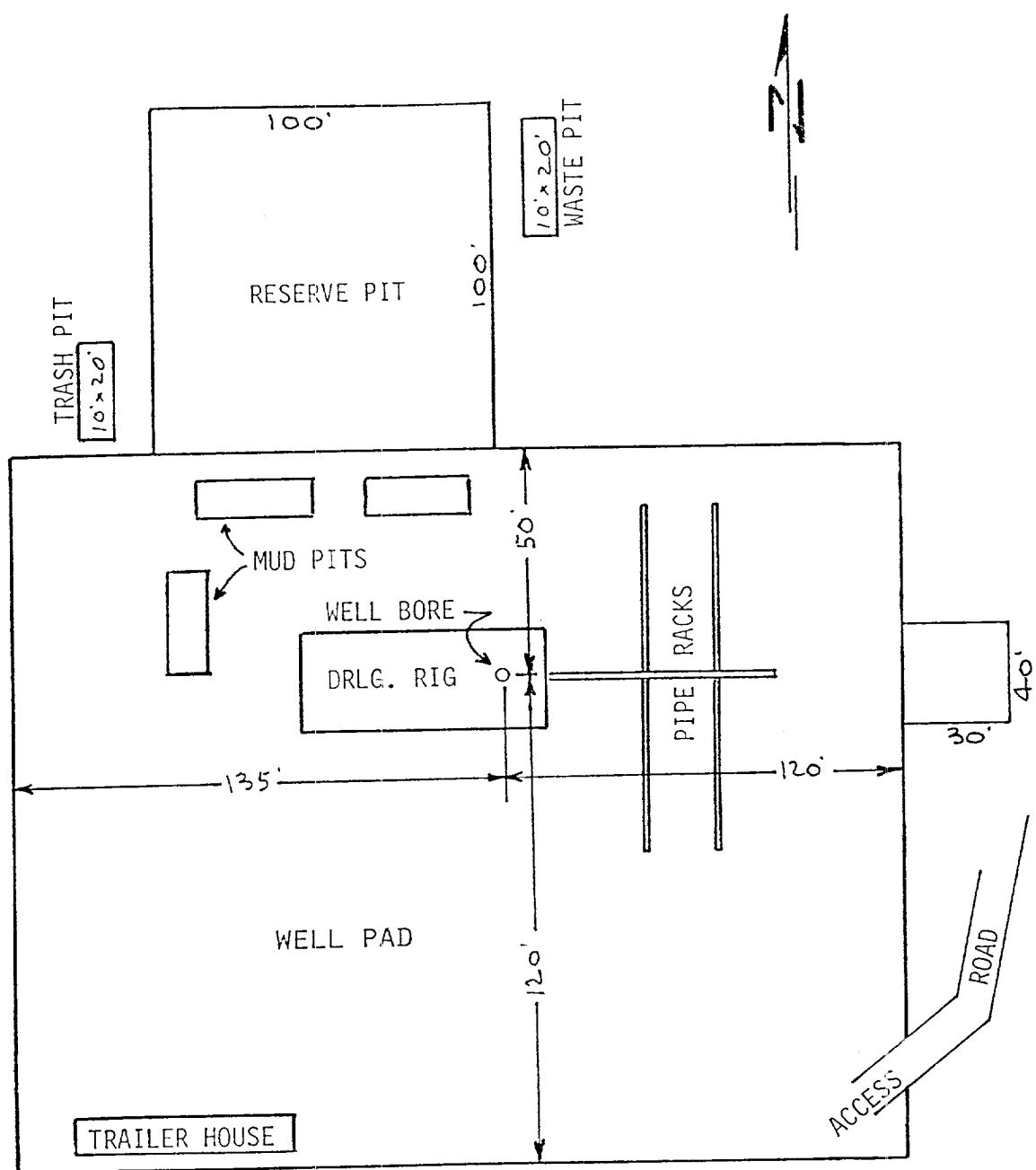


EXHIBIT "C"

J.M. HUBER CORPORATION
 WELL NO.1 FEDERAL 12
 DRILLING RIG LAYOUT
 SCALE: None