

UNITED STATES  
DEPARTMENT OF THE INTERIOR  
GEOLOGICAL SURVEY

## APPLICATION FOR PERMIT TO DRILL, DEEPEN, OR PLUG BACK

## 1a. TYPE OF WORK

DRILL ☐DEEPEN ☐PLUG BACK ☒

## b. TYPE OF WELL

OIL  
WELL ☒GAS  
WELL ☐OTHER ☐SINGLE  
ZONE ☒MULTIPLE  
ZONE ☐

## 2. NAME OF OPERATOR

Superior Oil Company, The

## 3. ADDRESS OF OPERATOR

9 Greenway Plaza, Suite 2700, Houston, TX 77046

P. O. Box 633, Midland, Texas 79702

## 4. LOCATION OF WELL (Report location clearly and in accordance with any State requirements.)\*

At surface

660' FNL, 1980' FEL of Section 12

At proposed prod. zone

Same

## 14. DISTANCE IN MILES AND DIRECTION FROM NEAREST TOWN OR POST OFFICE\*

8.5 miles NE from Carlsbad, NM

## 15. DISTANCE FROM PROPOSED\*

LOCATION TO NEAREST

PROPERTY OR LEASE LINE, FT.

(Also to nearest drlg. unit line, if any)

950' NW

660' North

## 16. NO. OF ACRES IN LEASE

776.2

17. NO. OF ACRES ASSIGNED  
TO THIS WELL

776.2

## 18. DISTANCE FROM PROPOSED LOCATION\*

TO NEAREST WELL, DRILLING, COMPLETED,  
OR APPLIED FOR, ON THIS LEASE, FT.

## 19. PROPOSED DEPTH

PB 5515'  
orig. 5666'

## 20. ROTARY OR CABLE TOOLS

Rotary

## 21. ELEVATIONS (Show whether DF, RT, GR, etc.)

3198' GR

## 22. APPROX. DATE WORK WILL START\*

Well Spudded 8/15/85

## 23.

## PROPOSED CASING AND CEMENTING PROGRAM

SIZE OF HOLE	SIZE OF CASING	WEIGHT PER FOOT	SETTING DEPTH	QUANTITY OF CEMENT
17 1/2"	13 3/8"	54.5#	665'	650 sk. + 250 sx.
12 1/2"	8 5/8"	24#	2615'	1200 sk. + 300 sx.
7 7/8"	5 1/2"	15.5#	5666'	650 sk. + 450 sx.

13 3/8" Csg. - 650 sx. Class C, 2% CaCl 2, 1/4 #/sx. flocele and 250 sx. Class C Neat.

8 5/8" Csg. - 1200 sx. HOWCO Lite w/1/4# 1 S. flocele, 300 sx. Class C w/2% CaCl 2.

5 1/2" Csg. - 650 sx. Trinity LW + 1/4# flocele and 450 sx. Class C Neat

Drld. to 5550' - well dry. Set CIBP at 5550' w/35' Class C on top of CIBP. Plugged back to Delaware zone.

\* Well originally permitted for Avalon-Bone Spring, East Field.

*New flat attached*  
*5 1/2" csg. depth changed*  
*from : 5800'*  
*to : 5666'*

IN ABOVE SPACE DESCRIBE PROPOSED PROGRAM: If proposal is to deepen or plug back, give data on present productive zone and proposed new productive zone. If proposal is to drill or deepen directionally, give pertinent data on subsurface locations and measured and true vertical depths. Give blowout preventer program, if any.

## 24.

## SIGNED

L. E. Tate

## TITLE

Env. &amp; Reg. Mgr.

DATE 11/26/85

an agent for the Superior Oil Company

(This space for Federal or State office use)

## PERMIT NO.

## APPROVAL DATE

## APPROVED BY

*Mark Jordan*

## TITLE

AREA MANAGER

CARLSBAD

## DATE

12.6.85

CONDITIONS OF APPROVAL, IF ANY:

All distances must be from the outer boundaries of the Section.

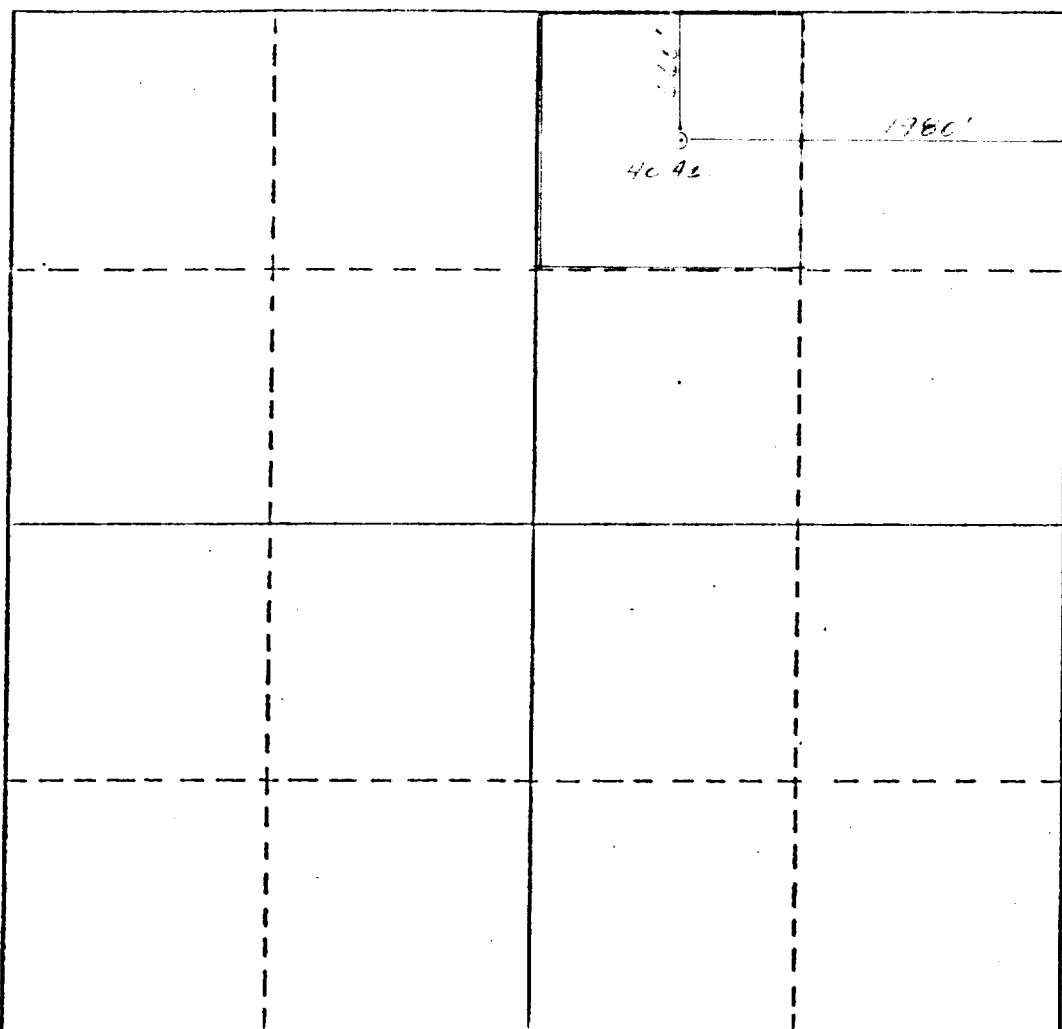
Operator Superior Oil Company			Lease Government "D"		Well No. 8
Unit Letter B	Section 12	Township 21-S	Range 27-E	County Eddy	
Actual Footage Location of Well: 660 feet from the north line and 1980 feet from the east line					
Ground Level Elev. 3198'	Producing Formation Delaware		Pool Fenton, Northwest		Dedicated Acreage: 40 Acres

1. Outline the acreage dedicated to the subject well by colored pencil or hachure marks on the plat below.
2. If more than one lease is dedicated to the well, outline each and identify the ownership thereof (both as to working interest and royalty).
3. If more than one lease of different ownership is dedicated to the well, have the interests of all owners been consolidated by communitization, unitization, force-pooling, etc?

☐ Yes ☐ No If answer is "yes," type of consolidation \_\_\_\_\_

If answer is "no," list the owners and tract descriptions which have actually been consolidated. (Use reverse side of this form if necessary.) \_\_\_\_\_

No allowable will be assigned to the well until all interests have been consolidated (by communitization, unitization, forced-pooling, or otherwise) or until a non-standard unit, eliminating such interests, has been approved by the Division.



CERTIFICATION

I hereby certify that the information contained herein is true and complete to the best of my knowledge and belief.

*G. E. Tate* G. E. Tate  
Name As Agent for the Superior Oil Co.

Position  
Env. & Reg. Manager

Company  
Mobil Producing Tx. & N.M., Inc

Date  
November 4, 1985

I hereby certify that the well location shown on this plat was plotted from field notes of actual surveys made by me or under my supervision, and that the same is true and correct to the best of my knowledge and belief.

Date Surveyed  
5-8-85

Registered Professional Engineer  
and/or Land Surveyor

J. N. Newton

Certificate No.  
5109

0 330 660 990 1320 1650 1980 2310 2640 2970 3300 3630 3960 4290 4620 4950 5280 5610 5940 6270 6600