

## OIL CONSERVATION DIVISION

STATE OF NEW MEXICO  
ENERGY AND MINERALS DEPARTMENTP. O. BOX 2088  
SANTA FE, NEW MEXICO 87501Form C-102  
Revised 10-1-78

All distances must be from the outer boundaries of the Section.

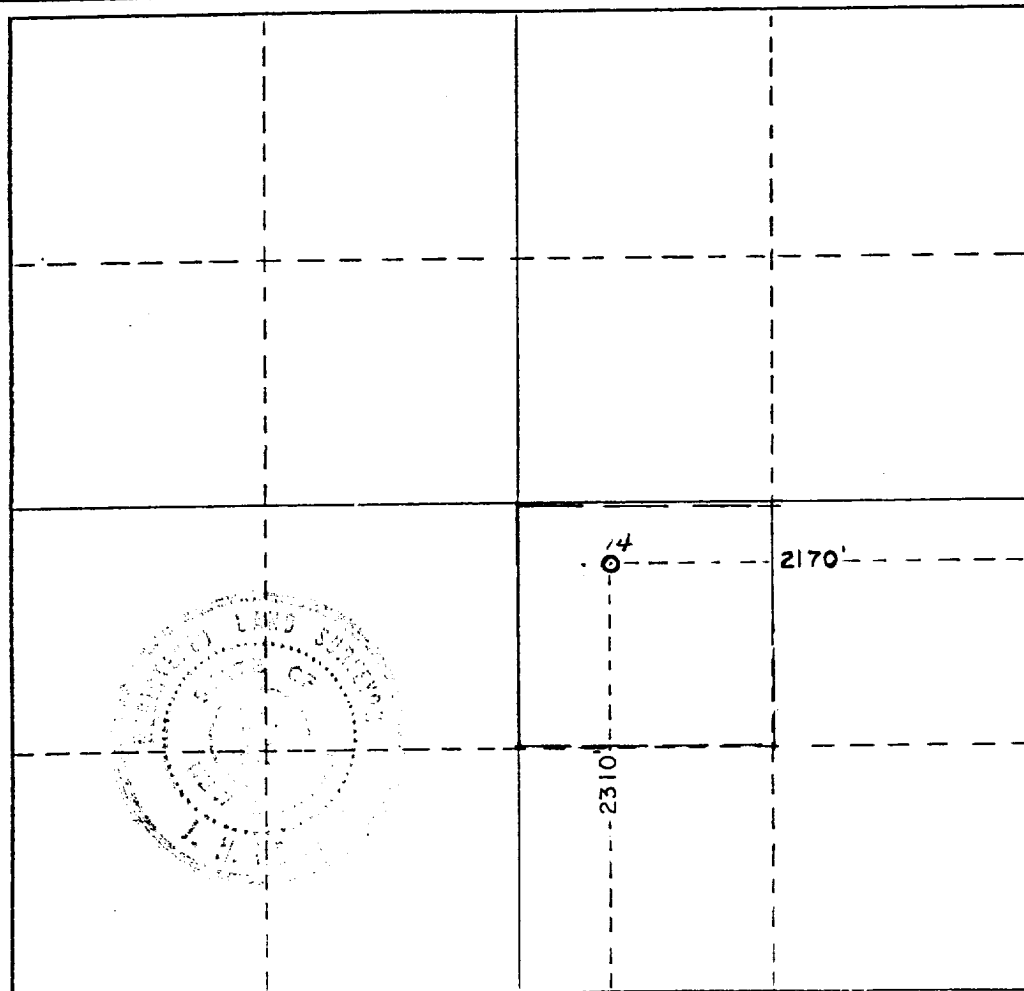
Operator Superior Oil Company, The		Lease Government "D"		Well No. 14
Unit Letter R	Section 1	Township 21 South	Range 27 East	County Eddy
Actual Footage Location of Well: 2310 feet from the South line and 2170 feet from the East line				
Ground Level Elev. 3188	Producing Formation Delaware	Pool Undesignated	Dedicated Acreage: 40 Acres	

1. Outline the acreage dedicated to the subject well by colored pencil or hachure marks on the plat below.
2. If more than one lease is dedicated to the well, outline each and identify the ownership thereof (both as to working interest and royalty).
3. If more than one lease of different ownership is dedicated to the well, have the interests of all owners been consolidated by communitization, unitization, force-pooling, etc?  
☐ Yes ☐ No If answer is "yes," type of consolidation \_\_\_\_\_

RECEIVED BY  
FEB 01 1986  
O. C. D.  
ARTESIA, OFFICE

If answer is "no," list the owners and tract descriptions which have actually been consolidated. (Use reverse side of this form if necessary.) \_\_\_\_\_

No allowable will be assigned to the well until all interests have been consolidated (by communitization, unitization, forced-pooling, or otherwise) or until a non-standard unit, eliminating such interests, has been approved by the Division.



## CERTIFICATION

I hereby certify that the information contained herein is true and complete to the best of my knowledge and belief.

G. E. Tate G. E. Tate  
Name

As Agent for The Superior Oil Co.  
Position

Env. & Reg. Mgr.

Company

Mobil Producing TX & NM Inc.

Date

1-21-86

I hereby certify that the well location shown on this plat was plotted from field notes of actual surveys made by me or under my supervision, and that the same is true and correct to the best of my knowledge and belief.

Date Surveyed  
December 10, 1985

Registered Professional Engineer  
and/or Land Surveyor

J. A. Newton  
Certificate No.  
5109

0 330 660 990 1320 1650 1980 2310 2640 2970 3300 3630 3960 4290 4620 4950 5280 5610 5940 6270 6600