

30-015-25584

STATE OF NEW MEXICO
ENERGY AND MINERALS DEPARTMENT

OIL CONSERVATION DIVISION

Form C-101
Revised 10-1-78

NO. OF COPIES RECEIVED	
DISTRIBUTION	
SANTA FE	✓
FILE	✓
U.S.G.S.	✓
LAND OFFICE	✓
OPERATOR	✓

RECEIVED BY P. O. BOX 2080
SANTA FE, NEW MEXICO 87501

MAR 03 1986

O. C. D.

ARTESIA OFFICE

5A. Indicate Type of Lease
STATE ☐ FEE ☒

5. State Oil & Gas Lease No.

APPLICATION FOR PERMIT TO DRILL, DEEPEN, OR PLUG BACK

1a. Type of Work

DRILL ☒DEEPEN ☐PLUG BACK ☐

b. Type of Well

OIL WELL ☒GAS WELL ☐

OTHER

SINGLE ZONE ☐MULTIPLE ZONE ☐

2. Name of Operator

Ray Westall ✓

3. Address of Operator

P. O. Box 4 Loco Hills, New Mexico 88255

4. Location of Well

UNIT LETTER H

LOCATED 2310

FEET FROM THE

North

LINE

AND 660

FEET FROM THE

East

LINE OF SEC. 24

TWP. 22S

RGE. 26E

NMPM

7. Unit Agreement Name

8. Farm or Lease Name

Baseball Park

9. Well No.

4

10. Field and Pool, or Wildcat
Unit
S. Carlsbad Delaware

12. County

Eddy

19. Proposed Depth

4600'

19A. Formation

Delaware

20. Rotary or C.I.

Rotary

21. Elevations (show whether DT, RT, etc.)

3150. GR

21A. Kind & Status Plug. Bond

Blanket

21B. Drilling Contractor

WEK Drlg. Co.

22. Approx. Date Work will start

ASAP

23.

PROPOSED CASING AND CEMENT PROGRAM

SIZE OF HOLE	SIZE OF CASING	WEIGHT PER FOOT	SETTING DEPTH	SACKS OF CEMENT	EST. TOP
12 1/4"	8 5/8"	23#	400'	Circulate	
8"	5 1/2"	15.5#	4600'	500 sxs	

We propose to drill and test the Delaware formation. Approximately 400' of 8 5/8" surface casing will be set to shut off gravel and caving. 5 1/2" production casing will be run, perforated and frac'd for production.

BOP Program: A 10" Series 900 Shaffer Type F double BOP will be used in drilling this well.

Mud Program: Fresh water will be used to drill the surface. Brine water to within 150' of TD and mud up to log and run casing.

Posted API.
ID-1, NL
3-7-86

APPROVAL FOR 180 DAYS
FRONT DESK 9-5-86
UNLESS DRILLING UNDERWAY

IN ABOVE SPACE DESCRIBE PROPOSED PROGRAM; IF PROPOSAL IS TO DEEPEN OR PLUG BACK, GIVE DATA ON PRESENT PRODUCTIVE ZONE AND PROPOSED NEW PRODUCTIVE ZONE. GIVE BLOWOUT PREVENTER PROGRAM, IF ANY.

I hereby certify that the information above is true and complete to the best of my knowledge and belief.

Signed Ray Westall Title Operator Date 2-28-86

(This space for State Use)

APPROVED BY Mark Williams TITLE OIL AND GAS INSPECTOR DATE MAR 5 1986

CONDITIONS OF APPROVAL, IF ANY:

**W MEXICO OIL CONSERVATION COMMISSION
WELL LOCATION AND ACREAGE DEDICATION PLAT**

Form C-102
Supersedes C-128
Effective 1-1-65

All distances must be from the outer boundaries of the Section.

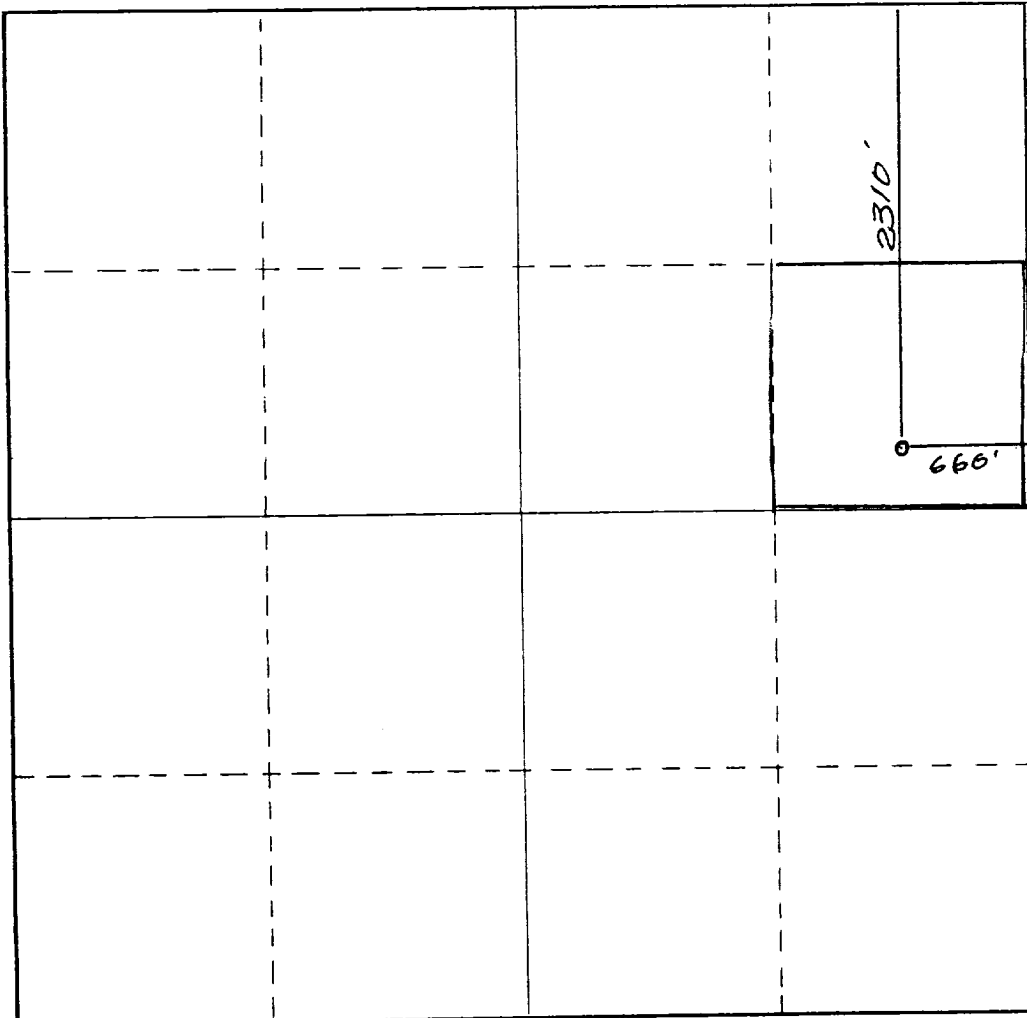
Operator RAY WESTALL			Lease Baseball Park		Well No. 4
Unit Letter H	Section 24	Township 22 South	Range 26 East	County Eddy	
Actual Footage Location of Well: 2310 feet from the North line and 660 feet from the East line					
Ground Level Elev. 3150.	Producing Formation Delaware		Pool Carlsbad		Dedicated Acreage: 40 Acres

1. Outline the acreage dedicated to the subject well by colored pencil or hachure marks on the plat below.
2. If more than one lease is dedicated to the well, outline each and identify the ownership thereof (both as to working interest and royalty).
3. If more than one lease of different ownership is dedicated to the well, have the interests of all owners been consolidated by communitization, unitization, forced-pooling, etc. D.
☐ Yes ☐ No If answer is "yes," type of consolidation _____

**RECEIVED BY
MAR 03 1986
O.C. D.
ARTESIA, OFFICE**

If answer is "no," list the owners and tract descriptions which have actually been consolidated. (Use reverse side of this form if necessary.) _____

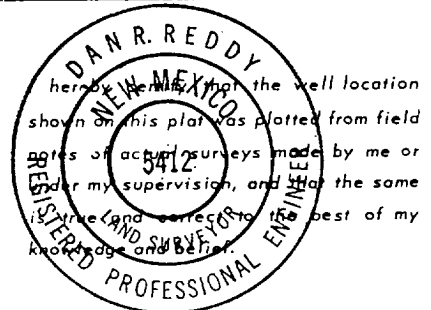
No allowable will be assigned to the well until all interests have been consolidated (by communitization, unitization, forced-pooling, or otherwise) or until a non-standard unit, eliminating such interests, has been approved by the Commission.



CERTIFICATION

I hereby certify that the information contained herein is true and complete to the best of my knowledge and belief.

Name Ray Westall
 Position Operator
 Company Ray Westall
 Date 2-25-86



Date Surveyed
February 13, 1986
 Registered Professional Engineer
 and/or Land Surveyor

Dan R. Reddy
 Certificate No.
NM PE&LS NO. 5412

