

UNITED STATES  
DEPARTMENT OF THE INTERIOR  
GEOLOGICAL SURVEY

## APPLICATION FOR PERMIT TO DRILL, DEEPEN, OR PLUG BACK

## 1a. TYPE OF WORK

DRILL ☒DEEPEN ☐PLUG BACK ☐

## b. TYPE OF WELL

OIL  
WELL ☒GAS  
WELL ☐

OTHER

## 2. NAME OF OPERATOR

Index Inc  
OGS Operating Company, Inc.

## 3. ADDRESS OF OPERATOR

550 W. Texas, Suite 1140 Midland, Texas

## 4. LOCATION OF WELL (Report location clearly and in accordance with State requirements)

At surface

2080' FNL &amp; 1980' FEL

At proposed prod. zone

Same

## 14. DISTANCE IN MILES AND DIRECTION FROM NEAREST TOWN OR POST OFFICE\*

7.3 miles west of Carlsbad, NM

## 15. DISTANCE FROM PROPOSED\*

LOCATION TO NEAREST  
PROPERTY OR LEASE LINE, FT.  
(Also to nearest drlg. unit line, if any)

660'

18. DISTANCE FROM PROPOSED LOCATION\*  
TO NEAREST WELL, DRILLING, COMPLETED,  
OR APPLIED FOR, ON THIS LEASE, FT.

None

## 16. NO. OF ACRES IN LEASE

311.93

## 19. PROPOSED DEPTH

4700'

17. NO. OF ACRES ASSIGNED  
TO THIS WELL

40

## 20. ROTARY OR CABLE TOOLS

Rotary

## 21. ELEVATIONS (Show whether DF, RT, GR, etc.)

3502 GL

## 22. APPROX. DATE WORK WILL START\*

June 15, 1987

## 23.

## PROPOSED CASING AND CEMENTING PROGRAM

SIZE OF HOLE	SIZE OF CASING	WEIGHT PER FOOT	SETTING DEPTH	QUANTITY OF CEMENT
17 1/2"	13 3/8"	61#	550'	650 sx "C" Circulate
12 1/4"	8 5/8"	24#	2000' *	530 sx HL & 200 sx "C" Circ.
7 7/8"	5 1/2"	15.5#	4700'	200 sx "C"

\* 2000' or 100' below the Capitan Reef.

## Mud Program:

0' - 550' Drill with fresh water mud and lost circulation mater. as needed.  
550' - 2000' Drill with native mud plus additives to clean hole as needed.  
2000' - 4700' Drill with fresh native mud plus additives.

## BOP Specifications:

Will install on the 8 5/8" surface casing a 3000 psi wp Schaeffer Type E  
Series 900 10" BOP. Will test daily.

IN ABOVE SPACE DESCRIBE PROPOSED PROGRAM: If proposal is to deepen or plug back, give data on present productive zone and proposed new productive zone. If proposal is to drill or deepen directionally, give pertinent data on subsurface locations and measured and true vertical depths. Give blowout preventer program, if any.

## 24.

## Agent for:

SIGNED

*[Signature]*

TITLE

OGS Operating Company, Inc. DATE May 21, 1987

(This space for Federal or State office use)

PERMIT NO.

APPROVAL DATE

APPROVED BY

Rajendra Giri

TITLE

AREA MANAGER

CARLSBAD RESOURCE AREA

DATE

6-16-87

CONDITIONS OF APPROVAL, IF ANY:



**MEXICO OIL CONSERVATION COMMISS**  
**WELL LOCATION AND ACREAGE DEDICATION PLAT**

Form C-102  
 Supersedes C-128  
 Effective 1-1-65

All distances must be from the outer boundaries of the Section.

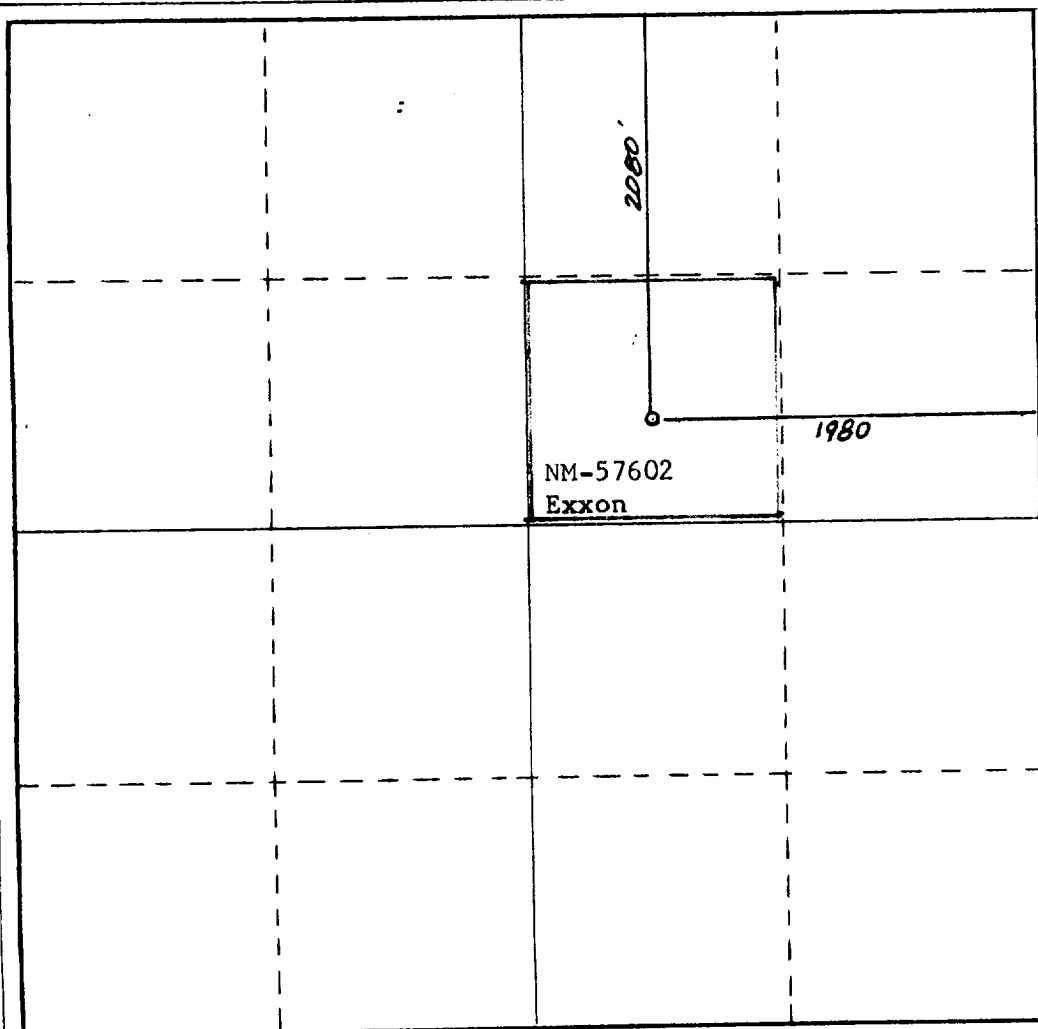
Operator <b>Indrex Inc.</b> <del>O G S OPERATING COMPANY</del>		Lease <b>Federal 15</b>		Well No. <b>1</b>
Unit Letter <b>G</b>	Section <b>15</b>	Township <b>22 South</b>	Range <b>25 East</b>	County <b>Eddy</b>
Actual Footage Location of Well: <b>2080</b> feet from the <b>North</b> line and <b>1980</b> feet from the <b>East</b> line				
Ground Level Elev. <b>3502.</b>	Producing Formation <b>Bone Springs</b>	Pool <b>wildcat</b>	Dedicated Acreage: <b>40</b> Acres	

1. Outline the acreage dedicated to the subject well by colored pencil or hachure marks on the plat below.
2. If more than one lease is dedicated to the well, outline each and identify the ownership thereof (both as to working interest and royalty).
3. If more than one lease of different ownership is dedicated to the well, have the interests of all owners been consolidated by communitization, unitization, force-pooling, etc?

☐ Yes ☐ No If answer is "yes," type of consolidation \_\_\_\_\_

If answer is "no," list the owners and tract descriptions which have actually been consolidated. (Use reverse side of this form if necessary.) \_\_\_\_\_

No allowable will be assigned to the well until all interests have been consolidated (by communitization, unitization, forced-pooling, or otherwise) or until a non-standard unit, eliminating such interests, has been approved by the Commission.



**CERTIFICATION**

I hereby certify that the information contained herein is true and complete to the best of my knowledge and belief.

Name \_\_\_\_\_

**George R. Smith**

Position

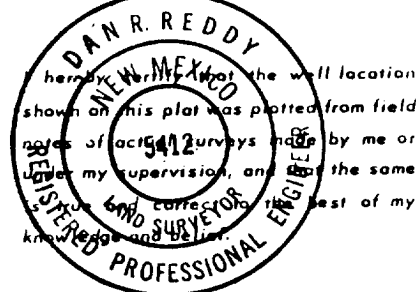
**Agent for:**

Company

**OGS Operating Company, Inc.**

Date

**May 21, 1987**



Date Surveyed

**May 16, 1987**

Registered Professional Engineer  
 and/or Land Surveyor

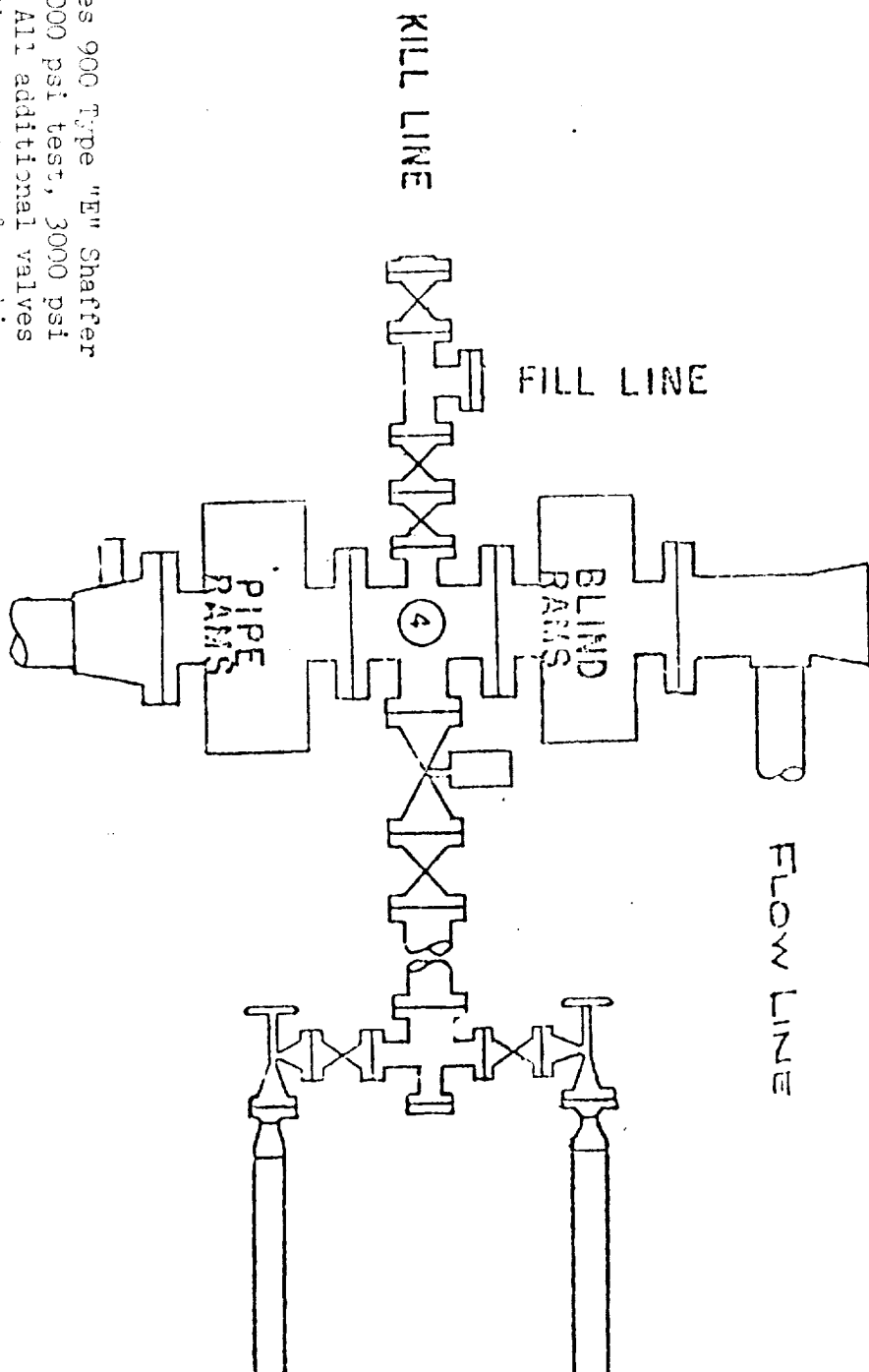
*Dan R. Reddy*

Certificate No.

**NM PE&LS NO. 5412**



# WEEK DRILLING CO., INC. - Rig 1 & 3 BLOWOUT PREVENTER SPECIFICATION



BOP's are 10" Series 900 Type "E" Shafter Double Hydraulic 6000 psi test, 3000 psi working pressure. All additional valves & connections are the same test & working pressures.



APPLICATION FOR DRILLING  
*Indrex Inc.*  
~~OGS OPERATING COMPANY, INC.~~  
FEDERAL 15, Well No. 1  
2080' FNL & 1980' FEL, Sec. 15-T22S-R25E  
Eddy County, New Mexico  
Lease No.: NM-57602  
(Exploratory Well)

In conjunction with Form 9-331C, Application for Permit to Drill subject well, OGS Operating Company, Inc. submits the following items of pertinent information in accordance with BLM requirements:

1. The geologic surface formation is recent Permian with quaternary alluvium and other surficial deposits.
2. The estimated tops of geologic markers are as follows:

Capitan Reef	600'	Bone Springs	4300'
Delaware Sand	2200'	T.D.	4700'
3. The estimated depth at which anticipated water, oil or gas formations are expected to encountered:

Water: Random fresh water sands from surface to 300'+/-.

Gas: None expected.

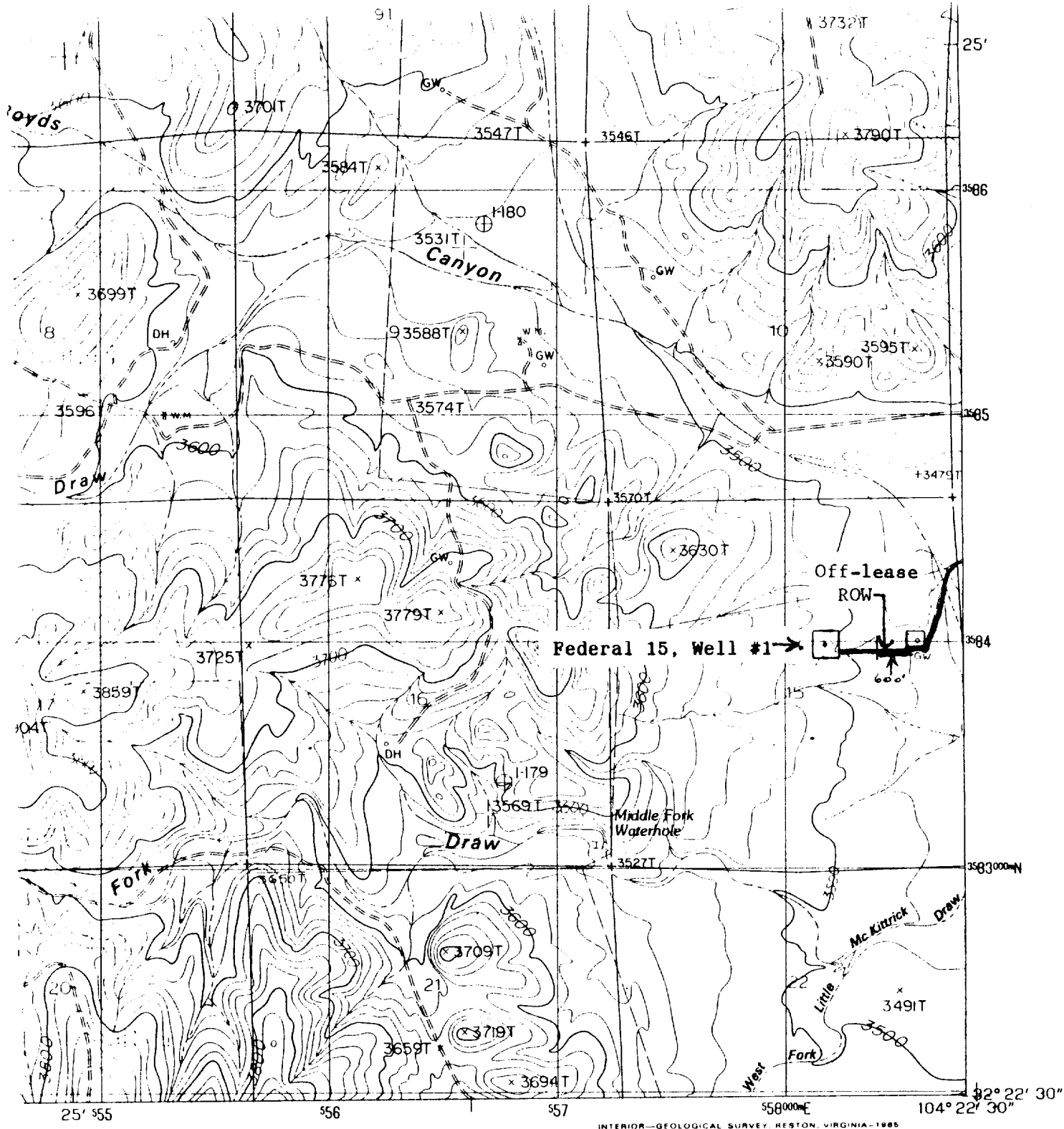
Oil: Possible in Bone Springs at or below 4300'.
4. Proposed Casing Program: See Form 9-331C.
5. Pressure Control Equipment: See Form 9-331C and Exhibit "E".
6. Mud Program: See Form 9-331C.
7. Auxiliary Equipment: Blowout preventer, gas detector, kelly cock, pit level monitor, flow sensors and stabbing valves.
8. Testing, Logging and Coring Program:

Drill Stem Tests: None planned.

Logging: CNL-LDT and DILL from surface casing to TD.

Coring: None.
9. No abnormal pressures or temperatures are anticipated. In the event abnormal pressures are encountered the proposed mud program will be modified to increase the mud weight.
10. Anticipated starting date of: June 15, 1987  
Anticipated completion of drilling operations: 30 days.





#### ROAD LEGEND

Improved Road .....  
 Unimproved Road .....  
 Trail .....

○ Interstate Route    ⬡ U.S. Route    ○ State Route

#### EXHIBIT "B"

~~OGS OPERATING COMPANY, INC.~~ Indrex Inc.

Federal 15, Well No. 1

2080' FNL & 1980' FEL, Sec. 15-T22S-R25E

Existing Access Road: —

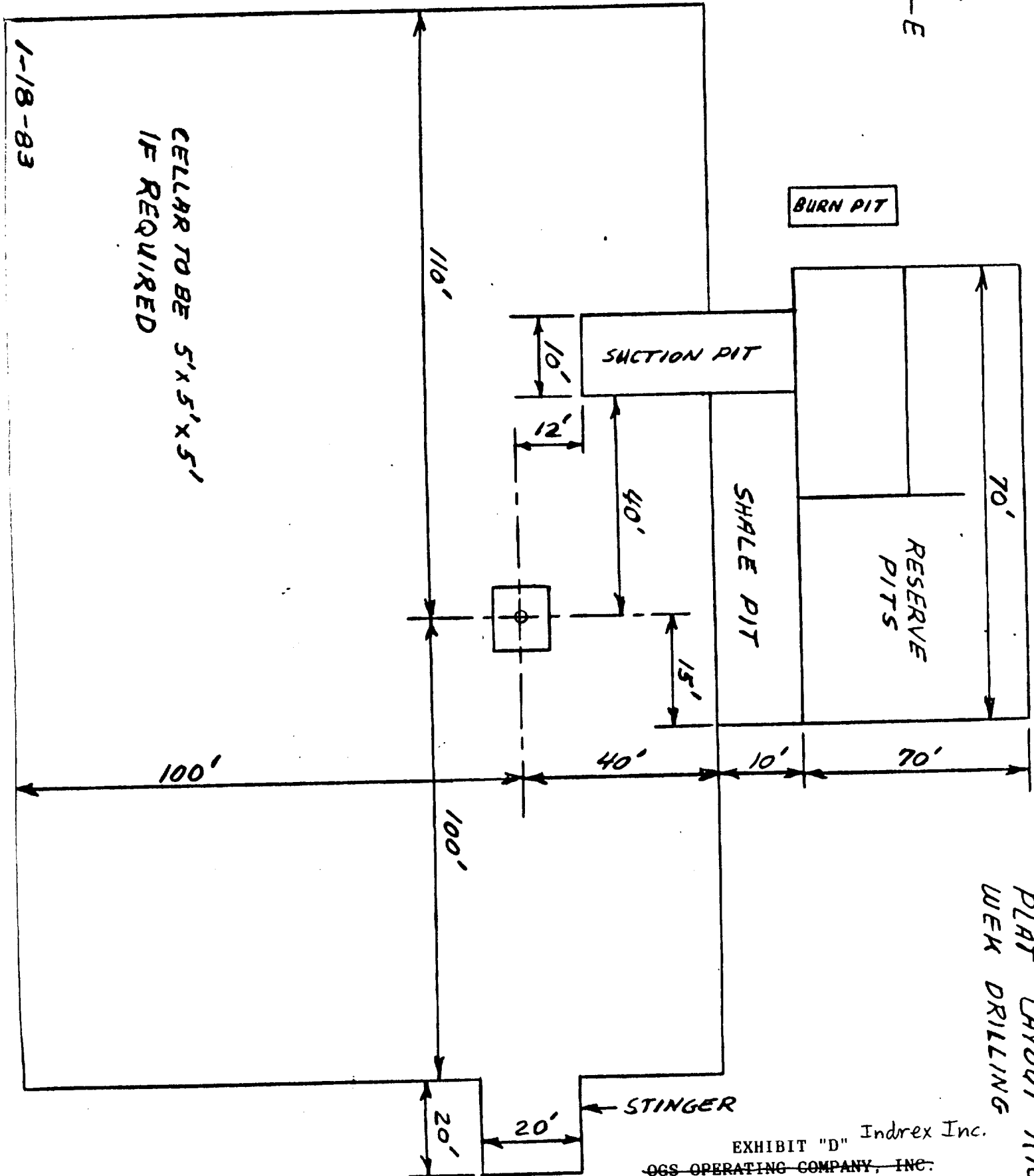
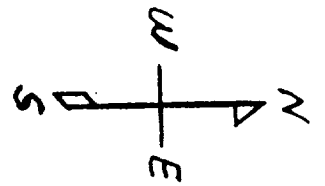
Proposed Access Road: —

**AZOTEA PEAK, NEW MEXICO**

**PROVISIONAL EDITION 1985**

32104-D4-TF-024





PLAT LAYOUT RIG 1  
WEEK DRILLING

EXHIBIT "D" Indrex Inc.  
~~OGS OPERATING COMPANY, INC.~~  
Federal 15, Well No. 1  
Rig Layout