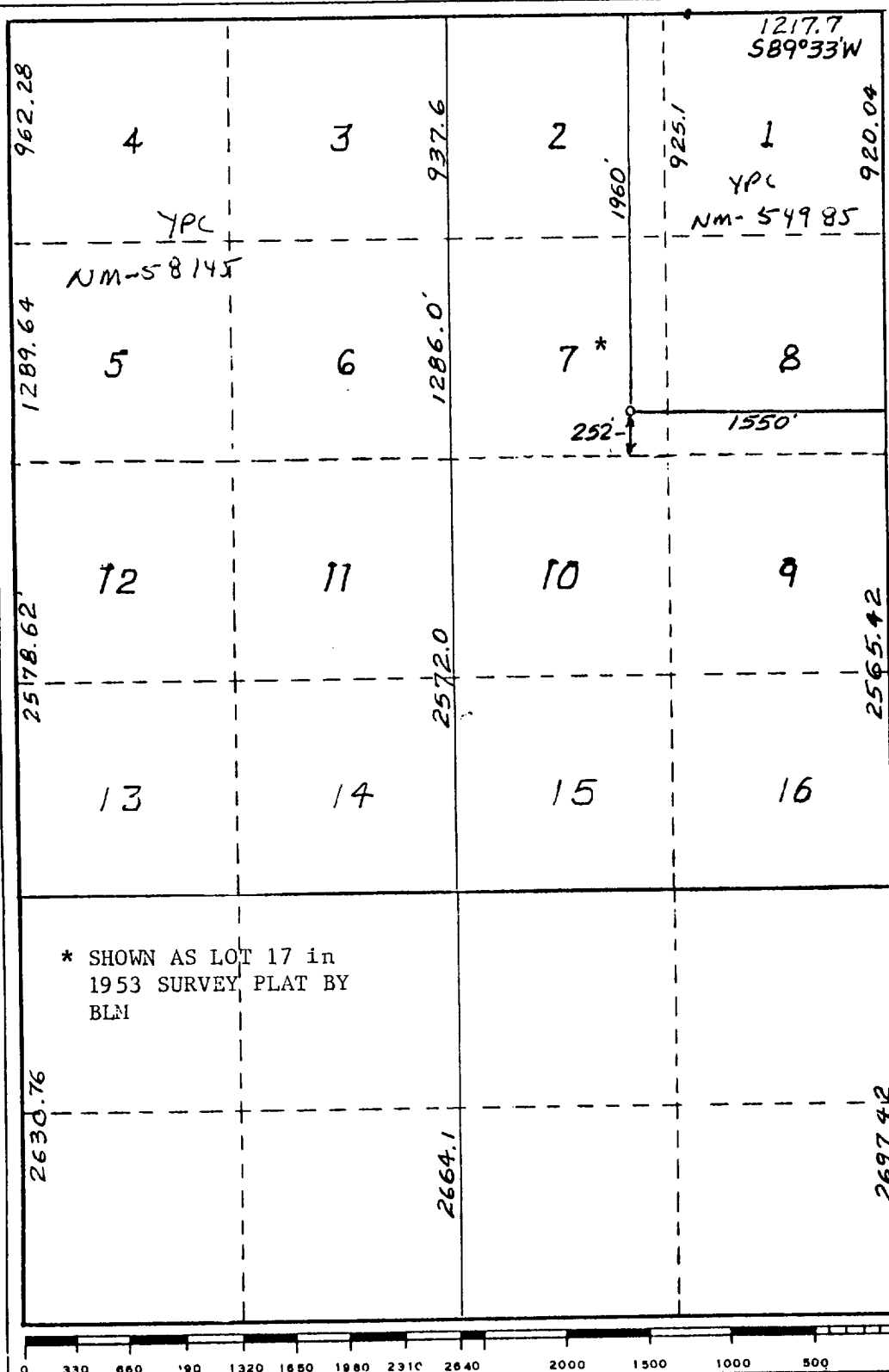


Form C-102
Supersedes C-128
Effective 1-1-65

Operator YATES PETROLEUM CORPORATION		Lease Springs AEU Federal Comm		Well No. 1
Unit Letter G (lot 7)	Section 3	Township 21 South	Range 25 East	County Eddy County, N.M.
Actual Footage Location of Well: 1960 feet from the North line and 1550 feet from the East line				
Ground Level Elev. 3306.	Producing Formation MORROW	Pool UNDESIGNATED SPRING MARROW	Dedicated Acreage: 276.21 Acres	

- ☒ Yes ☐ No If answer is "yes," type of consolidation TO BE COMMUNITIZED

No allowable will be assigned to the well until all interests have been consolidated (by communitization, unitization, forced-pooling, or otherwise) or until a non-standard unit, eliminating such interests, has been approved by the Commission.



Date _____

A circular professional seal for Dan R. Reddy. The outer ring contains the text "DAN R. REDDY" at the top and "REGISTERED PROFESSIONAL ENGINEER" at the bottom. The inner ring contains "NEW MEXICO" at the top and "LAND SURVEYOR" at the bottom. The center of the seal features the number "5412".

I hereby certify that the well location shown on this plat was plotted from field notes of actual surveys made by me or under my supervision, and that the same is true and correct to the best of my knowledge and belief.

Date Surveyed _____

January 8, 1988

Registered Professional Engineer
and/or Land Surveyor

San R. Reddy
Certificate No. 7

Certificate No.

NM PE&LS NO. 5412