



STATE OF NEW MEXICO

ENERGY, MINERALS AND NATURAL RESOURCES DEPARTMENT

GARREY CARRUTHERS
GOVERNOR

OIL CONSERVATION DIVISION
ARTESIA DISTRICT OFFICE

P.O. DRAWER DD
ARTESIA, NEW MEXICO 88210
(505) 748-1283

April 28, 1988

Primary Fuels, Inc.
P.O. Box 569
Houston, TX 77001

RE: PFI Amoco 19 Federal #3
19-22S-26E
Und. Happy Valley Morrow Gas

Gentlemen:

Our office has received the sundry notices from the federal office showing the above captioned well as being abandoned and the rig skidded to drill the #3-Y.

In our office the wells will be shown as two completely different wells. The #3-Y will be processed as a new well, therefore, we will need a new surveyors plat and another API number will be assigned for the #3-Y.

A completion report with spud date, total depth and P & A date will need to be filed for the #3.

Thank you for your cooperation in this matter.

Sincerely,

A handwritten signature in cursive script, reading "Mae Morgan".

Mae Morgan
Staff Specialist

MM/cw

N MEXICO OIL CONSERVATION COMMISSION
WELL LOCATION AND ACREAGE DEDICATION PLAT

RECEIVED

Form C-102
 Supersedes C-128
 Effective 1-1-65

All distances must be from the outer boundaries of the Section

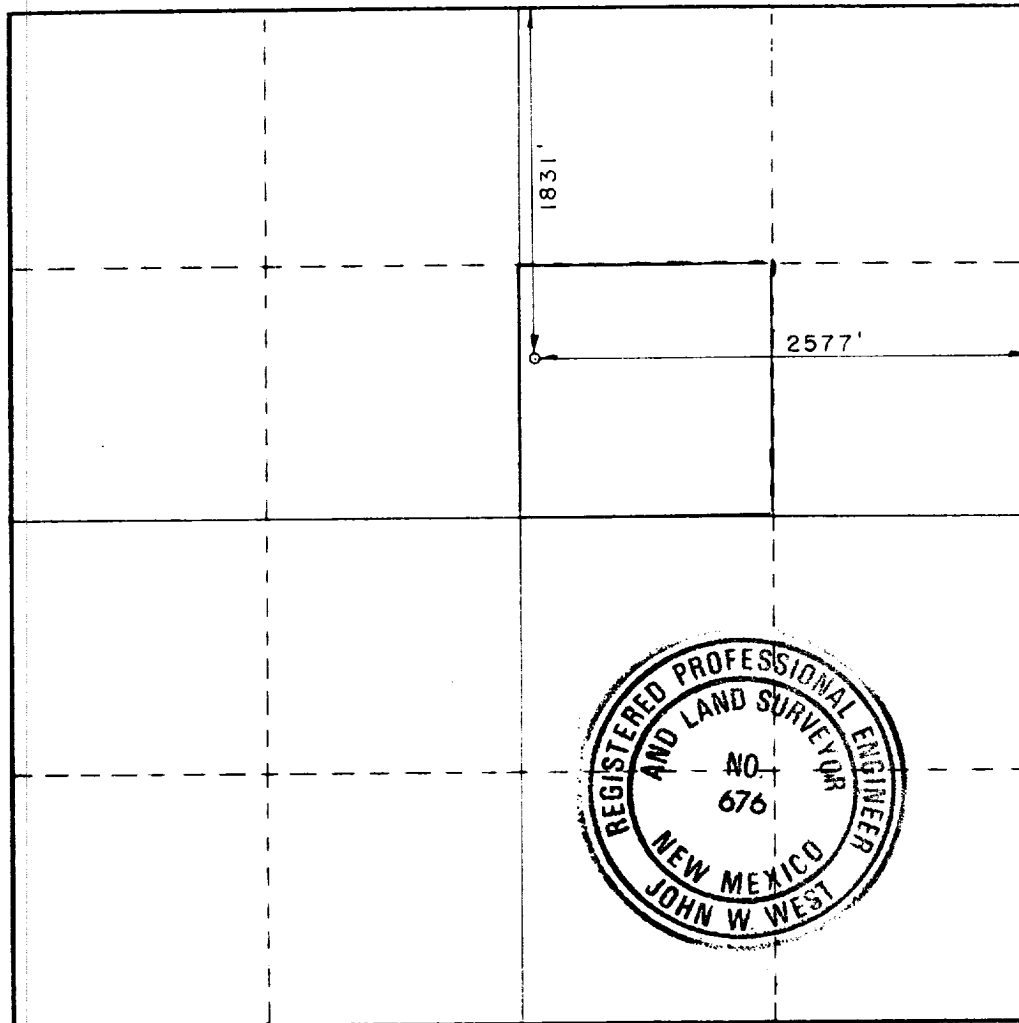
Operator Primary Fuels, Inc.			Lease PFI Amoco 19 Federal		Well No. 3Y
Tract Letter G	Section 19	Township 22 South	Range 26 East	County O. C. D. EDDARTESIA, OFFICE	
Actual Footage Location of Well: 1831 feet from the North line and 2577 feet from the East line					
Ground Level Elev. 3385.3	Producing Formation Delaware	Pool Wheat Cherry Canyon (Delaware)		Dedicated Acreage: 40 Acres	

1. Outline the acreage dedicated to the subject well by colored pencil or hachure marks on the plat below.
2. If more than one lease is dedicated to the well, outline each and identify the ownership thereof (both as to working interest and royalty).
3. If more than one lease of different ownership is dedicated to the well, have the interests of all owners been consolidated by communitization, unitization, force-pooling, etc?

☐ Yes ☐ No If answer is "yes," type of consolidation _____

If answer is "no," list the owners and tract descriptions which have actually been consolidated. (Use reverse side of this form if necessary.) _____

No allowable will be assigned to the well until all interests have been consolidated (by communitization, unitization, forced-pooling, or otherwise) or until a non-standard unit, eliminating such interests, has been approved by the Commission.



CERTIFICATION

I hereby certify that the information contained herein is true and complete to the best of my knowledge and belief.

Steven C. Partain

Name
Steven C. Partain
 Position
Mgr-Drilling & Production
 Company
Primary Fuels, Inc.

Date
5/4/88

I hereby certify that the well location shown on this plat was plotted from field notes of actual surveys made by me or under my supervision, and that the same is true and correct to the best of my knowledge and belief.

Date Surveyed
March 21, 1988

Registered Professional Engineer and/or Land Surveyor

Ronald J. Eidson
 Certificate No. **JOHN W. WEST, 676**
RONALD J. EIDSON, 3239