

UNITED STATES
DEPARTMENT OF THE INTERIOR
GEOLOGICAL SURVEY

APPLICATION FOR PERMIT TO DRILL, DEEPEN, OR PLUG BACK

5. LEASE DESIGNATION AND SERIAL NO.

NM-05612-A

6. IF INDIAN, ALLOTTEE OR TRIBE NAME

7. UNIT AGREEMENT NAME

8. FARM OR LEASE NAME

Indian Basin "A"

9. WELL NO.

2

10. FIELD AND POOL, OR WILDCAT

Indian Basin (Penn)

11. SEC., T., R., M., OR SDE.
AND SURVEY OR AREA

Sec. 22,

T-21-S, R-23-E

12. COUNTY OR PARISH 13. STATE

Eddy

NM

17. NO. OF ACRES ASSIGNED
TO THIS WELL

640

20. ROTARY OR CABLE TOOLS

Rotary

22. APPROX. DATE WORK WILL START*

11/1/88

1a. TYPE OF WORK

DRILL ☒DEEPEN ☐PLUG BACK ☐

b. TYPE OF WELL

OIL
WELL ☐GAS
WELL ☒

OTHER

SINGLE
ZONE ☐MULTIPLE
ZONE ☐

2. NAME OF OPERATOR

Marathon Oil Company

3. ADDRESS OF OPERATOR

P. O. Box 552 Midland, Texas 79702

4. LOCATION OF WELL (Report location clearly and in accordance with any State requirements.)

At surface

1650' FSL & 1650' FWL

At proposed prod. zone

1650' FSL & 1650' FWL

14. DISTANCE IN MILES AND DIRECTION FROM NEAREST TOWN OR POST OFFICE*

23 miles northeast of Carlsbad, New Mexico

15. DISTANCE FROM PROPOSED*

LOCATION TO NEAREST
PROPERTY OR LEASE LINE, FT.
(Also to nearest drig. unit line, if any)

1650'

18. DISTANCE FROM PROPOSED LOCATION*
TO NEAREST WELL, DRILLING, COMPLETED,
OR APPLIED FOR, ON THIS LEASE, FT.

N/A

16. NO. OF ACRES IN LEASE

640

19. PROPOSED DEPTH

7900'

21. ELEVATIONS (Show whether DF, RT, GR, etc.)

3870' GL

23.

PROPOSED CASING AND CEMENTING PROGRAM

SIZE OF HOLE	SIZE OF CASING	WEIGHT PER FOOT	SETTING DEPTH	QUANTITY OF CEMENT
17 1/2"	13 3/8"	48#	250'	300 sx - Circulate
11"	8 5/8"	24#	2000'	700 sx - Circulate
7 7/8"	5 1/2"	15.5#	7800'	700 sx - Circulate

Propose to drill no deeper than 7900'.

All casing will be in accordance with regulations and by approved methods.

Blowout preventors will be applied as outlined in Additional Information. (See Exhibits)

IN ABOVE SPACE DESCRIBE PROPOSED PROGRAM: If proposal is to deepen or plug back, give data on present productive zone and proposed new productive zone. If proposal is to drill or deepen directionally, give pertinent data on subsurface locations and measured and true vertical depths. Give blowout preventer program, if any.

24.

SIGNED

TITLE District Drilling Superint. DATE 10/17/88

(This space for Federal or State office use)

PERMIT NO.

APPROVAL DATE

APPROVED BY

TITLE

DATE 10-27-88

CONDITIONS OF APPROVAL, IF ANY:

N MEXICO OIL CONSERVATION COMMISS
WELL LOCATION AND ACREAGE DEDICATION PLAT

Form C-102
 Supersedes C-128
 Effective 1-1-65

All distances must be from the outer boundaries of the Section

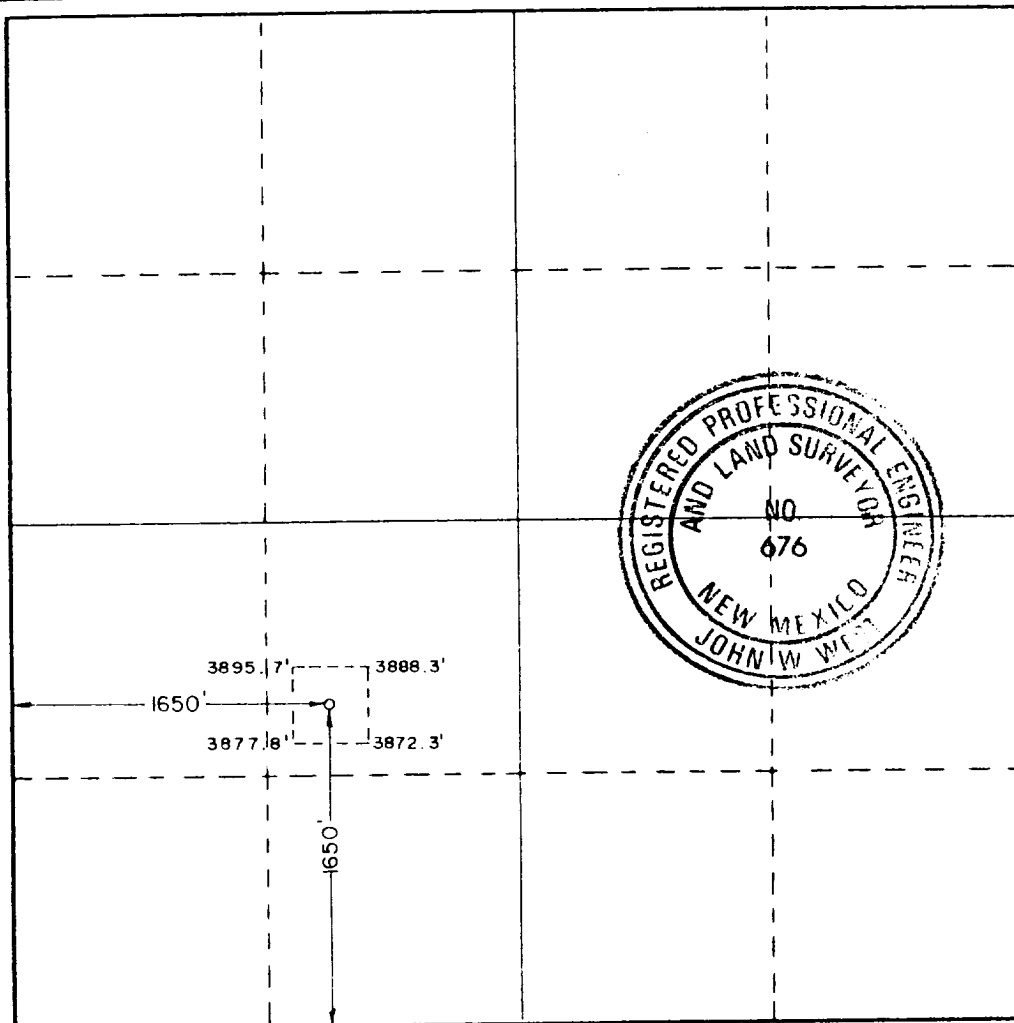
Operator Marathon Oil Company			Lease Indian Basin A		Well No. 2
Unit Letter K	Section 22	Township 21 South	Range 23 East	County Eddy	
Actual Footage Location of Well: 1650 feet from the South line and 1650 feet from the West line					
Ground Level Elev. 3879.5	Producing Formation Upper Penn		Pool <i>Indian Basin Upper Penn</i> Undesignated	Dedicated Acreage: 320 640 640 Acres	

1. Outline the acreage dedicated to the subject well by colored pencil or hatchure marks on the plat below.
2. If more than one lease is dedicated to the well, outline each and identify the ownership thereof (both as to working interest and royalty).
3. If more than one lease of different ownership is dedicated to the well, have the interests of all owners been consolidated by communitization, unitization, force-pooling, etc?

☐ Yes ☐ No If answer is "yes," type of consolidation _____

If answer is "no," list the owners and tract descriptions which have actually been consolidated. (Use reverse side of this form if necessary.) _____

No allowable will be assigned to the well until all interests have been consolidated (by communitization, unitization, forced-pooling, or otherwise) or until a non-standard unit, eliminating such interests, has been approved by the Commission.



CERTIFICATION

I hereby certify that the information contained herein is true and complete to the best of my knowledge and belief.

Name

Stanley L. Atnipp

Position

District Drilling Supt.

Company

Marathon Oil Company

Date

10/17/88

I hereby certify that the well location shown on this plat was plotted from field notes of actual surveys made by me or under my supervision, and that the same is true and correct to the best of my knowledge and belief.

Date Surveyed

October 6, 1988

Registered Professional Engineer and/or Land Surveyor

John W. West

Certificate No. **JOHN W. WEST, 676**
RONALD J. EIDSON, 3239

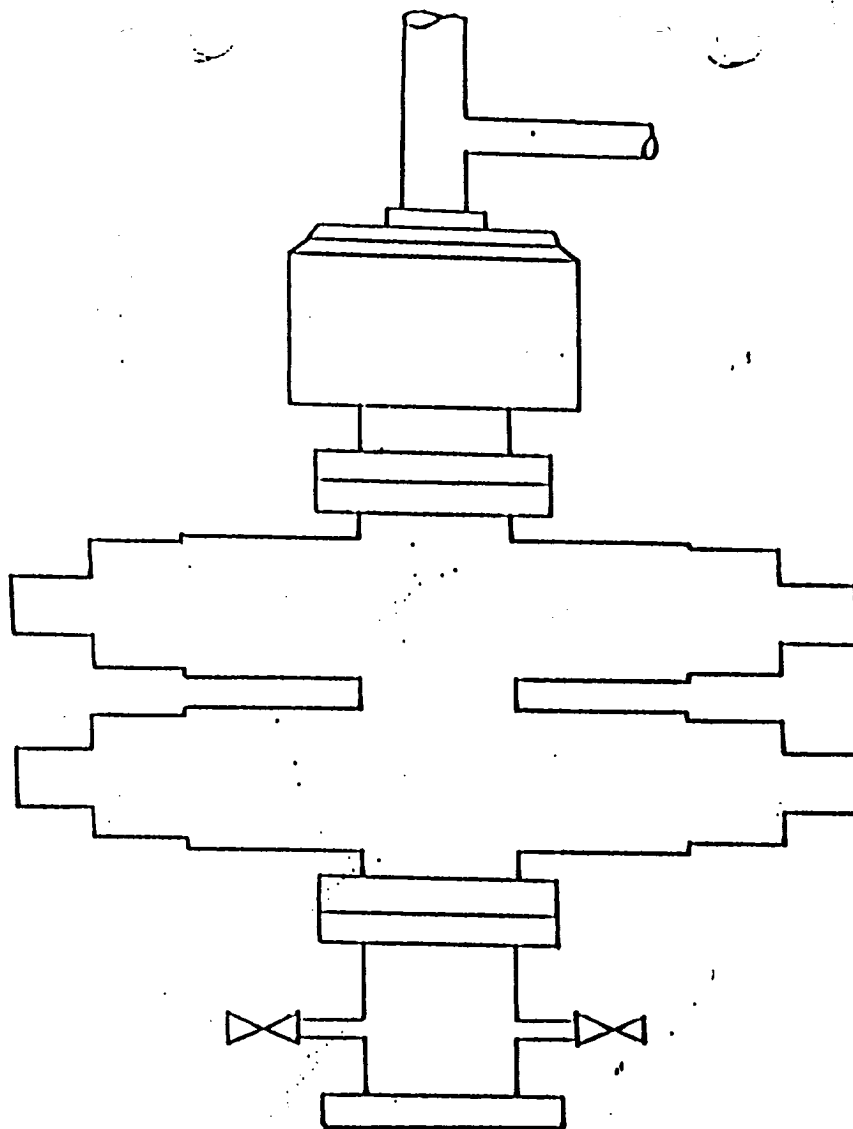


EXHIBIT "A"
INDIAN BASIN "A" #2
BOP STACK ARRANGEMENT
13 3/8" Surface Casing

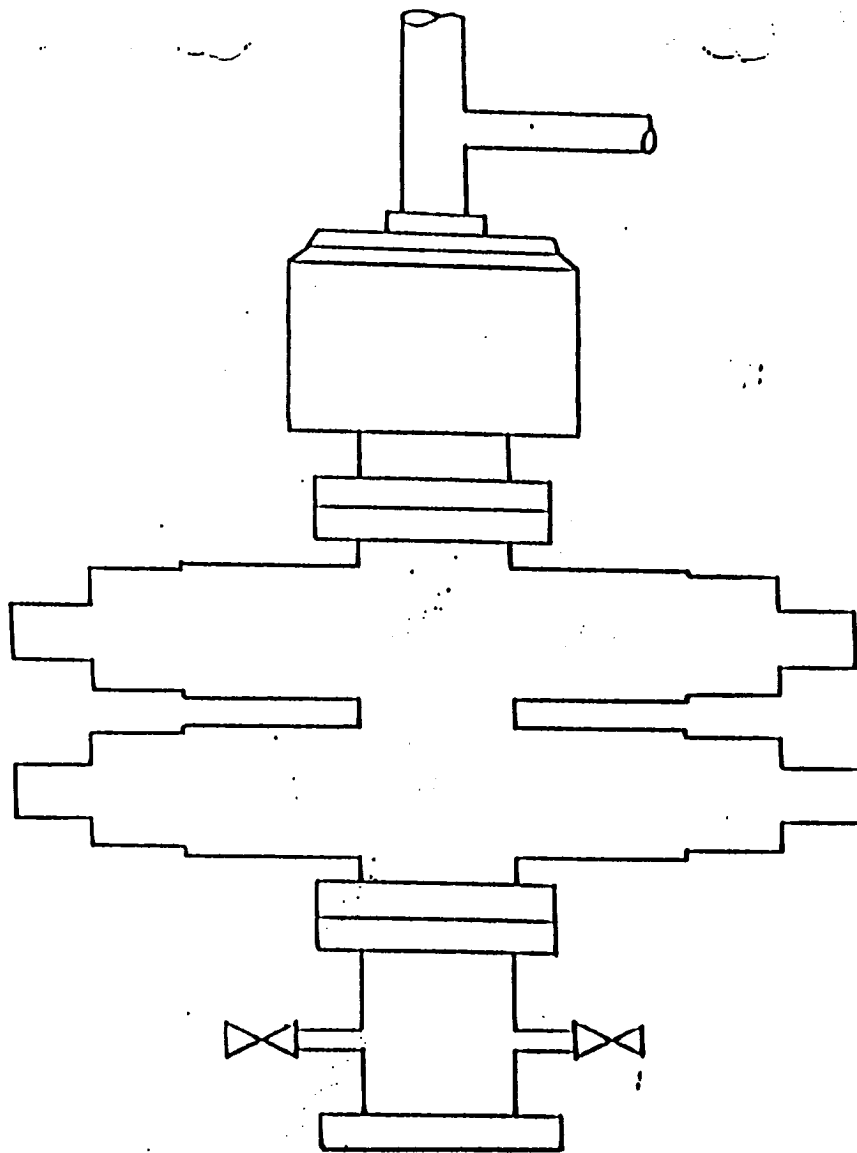


EXHIBIT "B"
INDIAN BASIN "A" #2
BOP STACK ARRANGEMENT
8 5/8" Intermediate Casing

MARATHON OIL COMPANY

INDIAN BASIN "A" #2
ADDITIONAL INFORMATION
Comply with Order 1

In conjunction with Form 9-331C, Application to drill subject well, Marathon Oil Company submits the following items of information in accordance with BLM requirements:

1. Geological Name of Surface Formation

Quaternary Alluvium

2. Estimated Tops of Important Geological Markers

Grayburg	173'	L. Bone Spring	5754'
San Andres	4470'	Wolfcamp	6118'
Glorietta	2018'	U. Penn	7350'
U. Bone Spring	3135'		

3. Estimated Depths of Anticipated Water, Oil or Gas Bearing Formations

Grayburg (water)	173'	L. Bone spring (water/oil)	5890'
San Andres (water)	4470'	Wolfcamp (oil/gas)	6118'
Glorietta (water)	2018'	U. Penn (gas)	7350'
U. Bone Spring (water/oil)	3900'		

4. Casing and Cementing Program

13 3/8" Surface to 250':	Cement to surface with 300 sxs Class "C" with 6% gel, 2% CaCl_2
8 5/8" Intermediate to 2000':	Cement to surface with 500 sxs Lite followed by 200 sxs Class "C" with 2% CaCl_2
5 1/2" Production to 7900':	Cement 1st stage with 250 sxs Lite with 2% NaCl, tail in with 250 sxs Class "H" 50:50 PozMix with 2% gel, 3% salt. Cement 2nd stage with 200 sxs Class "H" with 3% NaCl

5. Pressure Control Equipment (Exhibits A & B)

7. Auxiliary Equipment

A stabbing valve will be kept on the floor to be used when the kelly is not in the string.

8. Testing, Logging, and Coring Programs

A. Coring Program:

None Anticipated

B. Testing Program:

None Anticipated

C. Logging Program:

GR-Sonic, GR-CNL-FDC - TD - 6,000'
GR-DLL - TD - Intermediate Casing

9. Abnormal Pressures, Temperatures or Potential Hazards

None Anticipated

10. Anticipated Starting Date

As soon as possible

BANDANNA POINT QUAD.

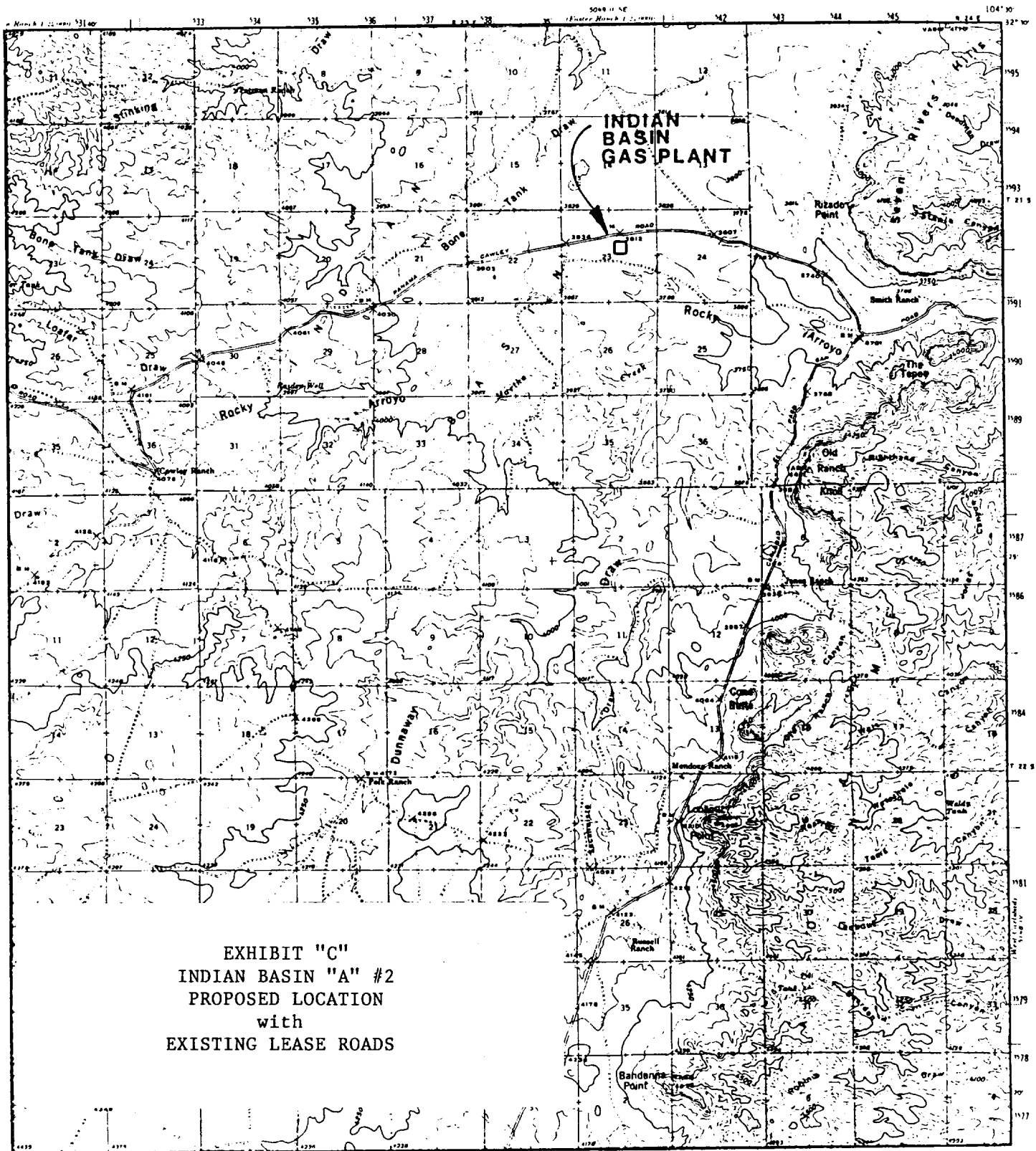


EXHIBIT "C"
INDIAN BASIN "A" #2
PROPOSED LOCATION
with
EXISTING LEASE ROADS

C.I. : 50'

0 1 2
SCALE : MILES

U.S.G.S. (1940)

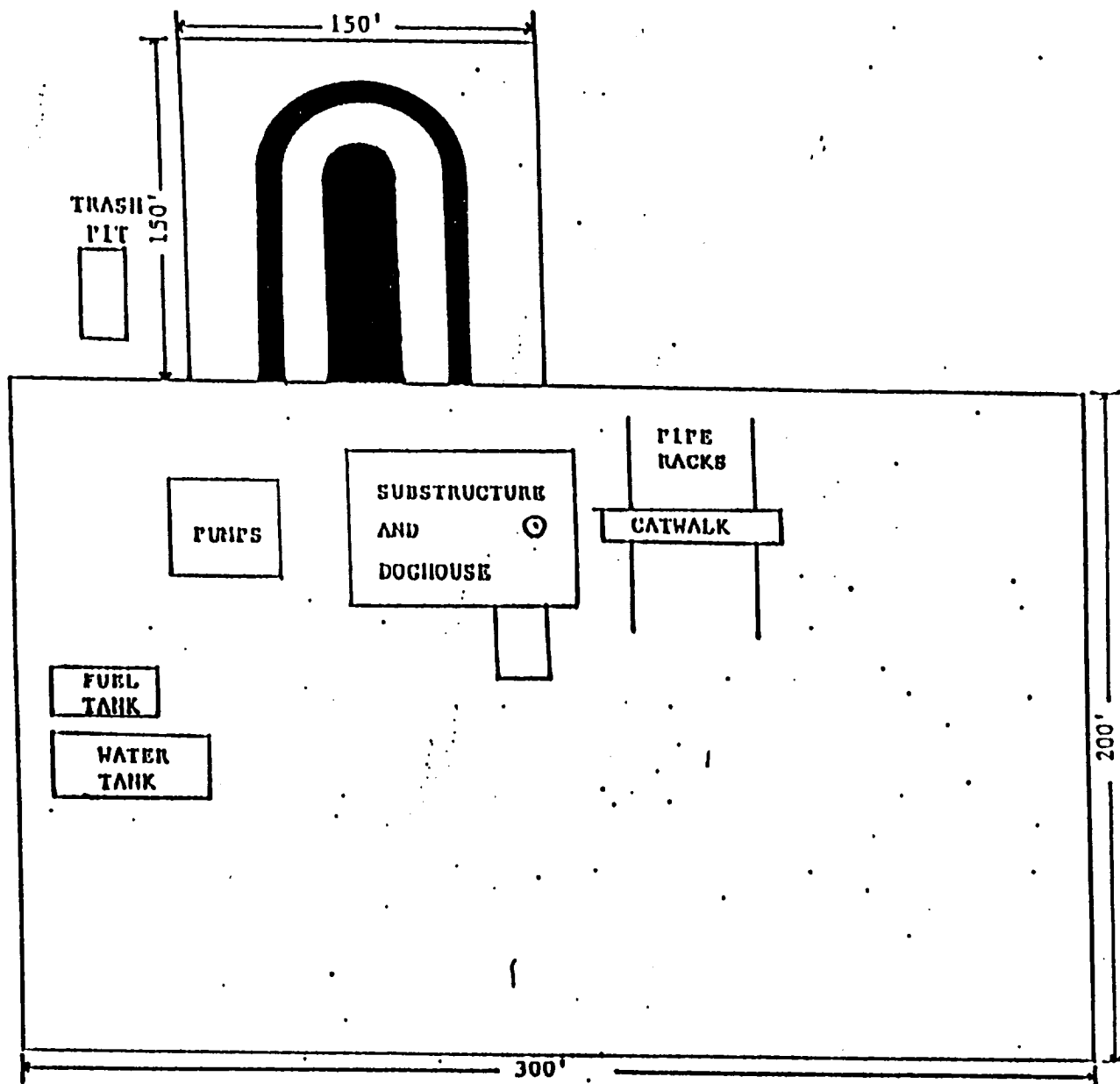


EXHIBIT "E"
 INDIAN BASIN "A" #2
 RELATIVE LOCATION
 of
 RIG COMPONENTS