

OIL CONSERVATION DIVISION

P.O. Box 2088
Santa Fe, New Mexico 87504-2088

DISTRICT I
P.O. Box 1980, Hobbs, NM 88240

DISTRICT II
P.O. Drawer DD, Artesia, NM 88210

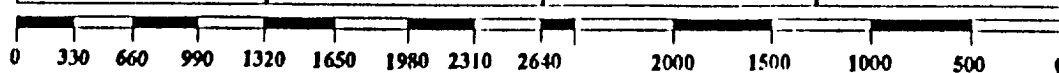
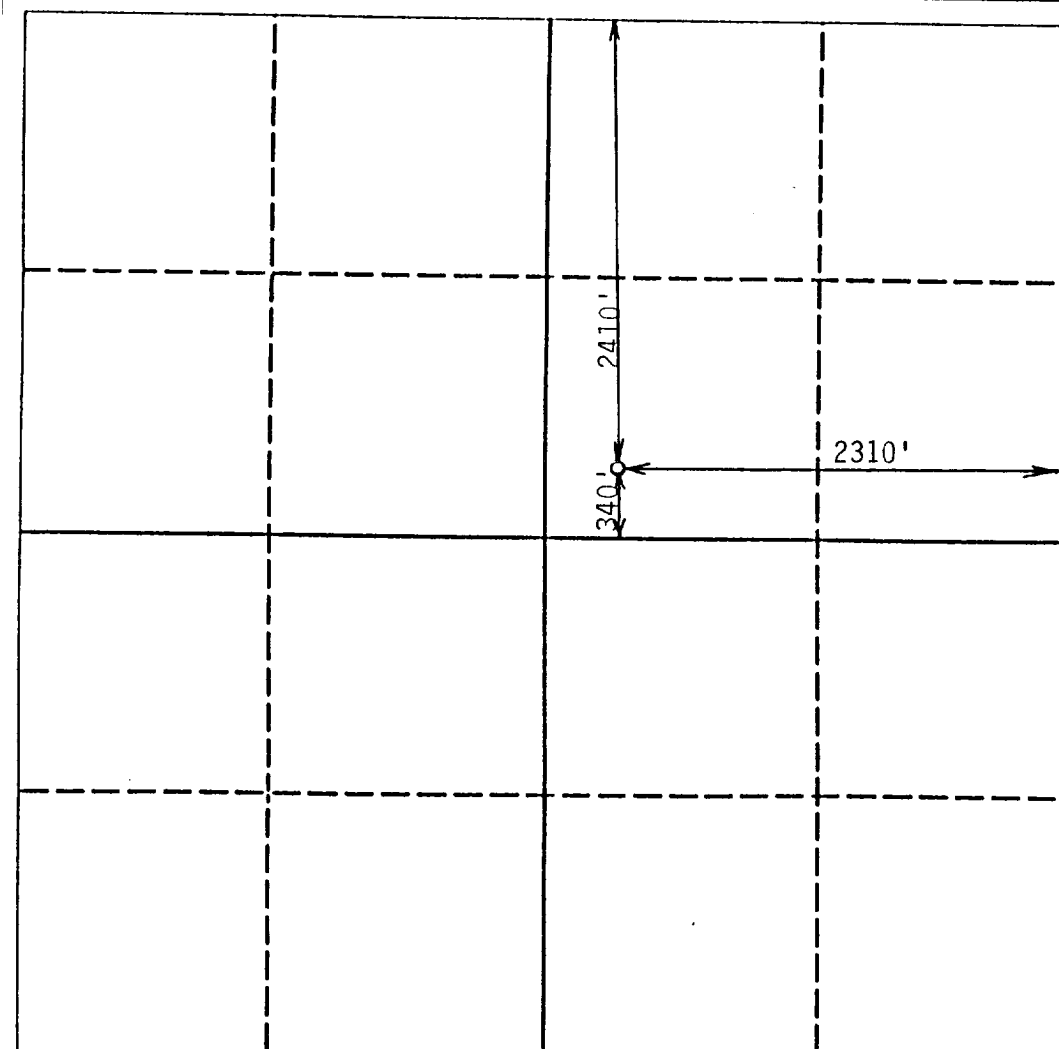
DISTRICT III
1000 Rio Brazos Rd., Aztec, NM 87410

WELL LOCATION AND ACREAGE DEDICATION PLAT

All Distances must be from the outer boundaries of the section

| | | | | | |
|--|------------------------------|----------------------|-------------------------------|---------------------------------|---------------|
| Operator Hondo Oil & Gas Co. | | | Lease Indian Basin Federal | | Well No. 1 |
| Unit Letter G | Section 6 | Township 22 South | Range 24 East | County Eddy | |
| Actual Footage Location of Well: 2410 feet from the North line and 2310 feet from the East line | | | | | |
| Ground level Elev. 4028 | Producing Formation Cisco | | Pool Indian Basin | Dedicated Acreage: 660 Acres | |

1. Outline the acreage dedicated to the subject well by colored pencil or hatchure marks on the plat below.
2. If more than one lease is dedicated to the well, outline each and identify the ownership thereof (both as to working interest and royalty).
3. If more than one lease of different ownership is dedicated to the well, have the interest of all owners been consolidated by communitization, unitization, force-pooling, etc.?
☐ Yes ☒ No If answer is "yes" type of consolidation _____
If answer is "no" list the owners and tract descriptions which have actually been consolidated. (Use reverse side of this form if necessary). _____
No allowable will be assigned to the well until all interests have been consolidated (by communitization, unitization, forced-pooling, or otherwise) or until a non-standard unit, eliminating such interest, has been approved by the Division.



OPERATOR CERTIFICATION

I hereby certify that the information contained herein in true and complete to the best of my knowledge and belief.

Signature
Ron Brown
Printed Name
Ron Brown
Position
engineer
Company
Hondo Oil & Gas
Date
3/22/89

SURVEYOR CERTIFICATION

I hereby certify that the well location shown on this plat was plotted from field notes of actual surveys made by me or under my supervision, and that the same is true and correct to the best of my knowledge and belief.

Date Surveyed
March 23, 1989
Signature & Seal of Professional Surveyor
P. R. Patton
Certificate No.
8112

