

UNITED STATES DEPARTMENT OF THE INTERIOR
BUREAU OF LAND MANAGEMENT
NM OIL SUBMIT IN TRIPLICATE
(Other Instructions on reverse side)
Artesia, NM 88210

Budget Bureau No. 1004-0135

Expires August 31, 1985

SUNDRY NOTICES AND REPORTS ON WELLS

(Do not use this form for proposals to drill or to deepen or plug back to a reservoir.
Use "APPLICATION FOR PERMIT—" for such proposals.)

1. OIL WELL <input checked="" type="checkbox"/> GAS WELL <input type="checkbox"/> OTHER <input type="checkbox"/>		FEB 21 1991		5. LEASE DESIGNATION AND SERIAL NO. NM-57633	
2. NAME OF OPERATOR Ray Westall		O. C. D. ARTESIA, OFFICE		6. IF INDIAN, ALLOTTEE OR TRIBE NAME 30-015-26450	
3. ADDRESS OF OPERATOR Box 4, Loco Hills, NM 88255				7. UNIT AGREEMENT NAME	
4. LOCATION OF WELL (Report location clearly and in accordance with any State requirements.* See also space 17 below.) At surface 2310 FSL & 330 FWL				8. FARM OR LEASE NAME Huron Federal	
				9. WELL NO. 1	
				10. FIELD AND POOL, OR WILDCAT Ind. Delaware East Burton Flat	
				11. SEC., T., R., M., OR BLK. AND SURVEY OR AREA 15 T20S-R29E	
14. PERMIT NO.		15. ELEVATIONS (Show whether DF, RT, OR, etc.) 3290 GL.		12. COUNTY OR PARISH Eddy	
				13. STATE NM	

16. Check Appropriate Box To Indicate Nature of Notice, Report, or Other Data

NOTICE OF INTENTION TO:

TEST WATER SHUT-OFF

FRACTURE TREAT

SHOOT OR ACIDIZE

REPAIR WELL

(Other) Re enter

PULL OR ALTER CASING

MULTIPLE COMPLETE

ABANDON*

CHANGE PLANS

SUBSEQUENT REPORT OF:

WATER SHUT-OFF

FRACTURE TREATMENT

SHOOTING OR ACIDIZING

(Other)

REPAIRING WELL

ALTERING CASING

ABANDONMENT*

(NOTE: Report results of multiple completion on Well Completion or Recompletion Report and Log form.)

17. DESCRIBE PROPOSED OR COMPLETED OPERATIONS (Clearly state all pertinent details, and give pertinent dates, including estimated date of starting any proposed work. If well is directionally drilled, give subsurface locations and measured and true vertical depths for all markers and zones pertinent to this work.)*

Well originally Drilled by Siete Oil & Gas Corp.

OTO-5952
P&A-9-1-90

We purpose to Reenter to original drilled depth of 5950'
run 5½" casing and cement back to 3000' with approx. 1200 sxs

Perforate and stimulate the Delaware formation as needed to
establish production.

RECEIVED
FEB 11 8 58 AM '91
CARL AREA
OFFICE

18. I hereby certify that the foregoing is true and correct

SIGNED

TITLE Geologist

DATE 2/8/91

(This space for Federal or State office use)

APPROVED BY

TITLE

DATE 2/20/91

CONDITIONS OF APPROVAL, IF ANY:

*See Instructions on Reverse Side

All distances must be from the outer boundaries of the Section

RECEIVED

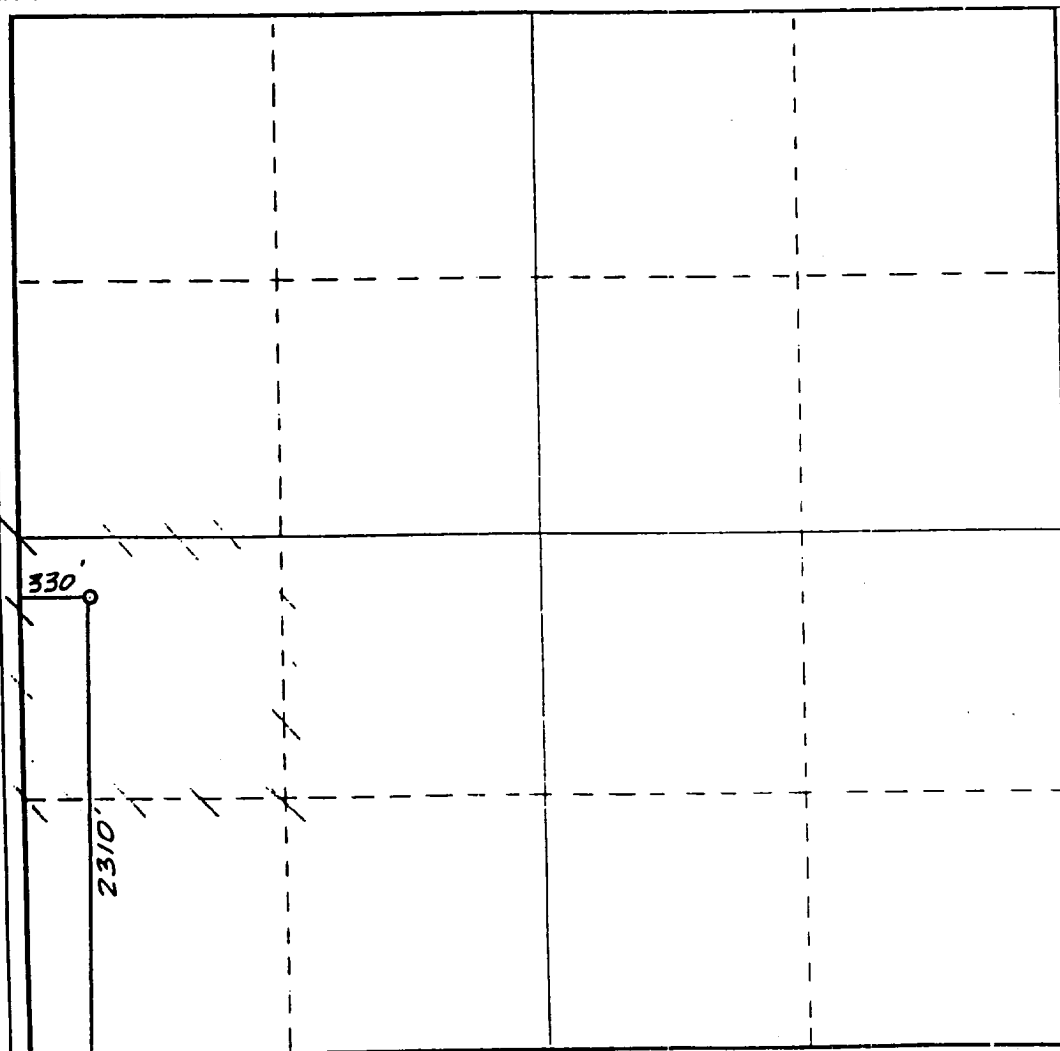
Operator RAY WESTALL		Lease HURON FEDERAL		Well No. 1
Unit Letter L	Section 15	Township 20 South	Range 29 East	County Reddy County, N.M.
Actual Footage Location of Well: 2310 feet from the South line and 330 feet from the West line				
Ground Level Elev. 3290.	Producing Formation Delaware	Pool East Burton	Dedicated Acreage: 40 Acres	

- Outline the acreage dedicated to the subject well by colored pencil or hachure marks on the plat below.
- If more than one lease is dedicated to the well, outline each and identify the ownership thereof (both as to working interest and royalty).
- If more than one lease of different ownership is dedicated to the well, have the interests of all owners been consolidated by communitization, unitization, force-pooling, etc?

☐ Yes ☐ No If answer is "yes," type of consolidation _____

If answer is "no," list the owners and tract descriptions which have actually been consolidated. (Use reverse side of this form if necessary.) _____

No allowable will be assigned to the well until all interests have been consolidated (by communitization, unitization, forced-pooling, or otherwise) or until a non-standard unit, eliminating such interests, has been approved by the Commission.



CERTIFICATION

I hereby certify that the information contained herein is true and complete to the best of my knowledge and belief.

David D. Justice
Name

V.P. Drilling/Production

Position

Siete Oil & Gas Corporation

Company

August 1, 1990

Date

DAN R. REDDY
NEW MEXICO
I hereby certify that the well location shown on this plat was plotted from field notes of actual surveys made by me or under my supervision and that the same is true and correct to the best of my knowledge and belief.
PROFESSIONAL ENGINEER

Date Surveyed

June 21, 1990

Registered Professional Engineer and/or Land Surveyor

Dan R. Reddy
Certificate No.

NM PE&PS NO. 5412

APPLICATION FOR DRILLING

Ray Westall (Formally Siete Oil & Gas)
Huron Federal No.1
2310' FSL & 330 FWL
Section 15, T20S-R29E

In conjunction with Form 3160-5, Sundry notices and reports on wells, Ray Westall submits the following ten items of pertinent information in accordance with BLM requirements:

1. The geological surface formation is quaternary.
2. The Geological markers have previously been filed.
3. The estimated depths at which anticipated water, oil & gas formations are expected to be encountered:
Water 0-180' already cased.
Oil and Gas zones in the Delaware formation.
4. Proposed casing program: See 3160-5
5. Pressure Control Equipment: A manual BOP will be installed prior to re entry.
6. Mud Program: Brine water will be used to reenter.
7. Auxiliary Equipment: None
8. Logging Program: Cement Bond log
9. No abnormal pressures or temperatures are anticipated.
10. Anticipated Starting Date: As soon as possible.

MULTI-POINT SURFACE USE AND OPERATIONS PLAN

RAY WESTALL

This plan is submitted with form 3160-5, Sundry Notice and Reports on Wells, covering the above described well. The purpose of this plan is to describe the location of the proposed well, the proposed construction activities and operations plan, the magnitude of surface disturbance involved, and the procedures to be followed in rehabilitating the surface after completion of the operations, so that a complete appraisal can be made of the environmental effect associated with the operation.

1. EXISTING ROADS.

Exhibit A is a portion of a USGS topographic map showing the wells and roads in the vicinity of the proposed location.

2. PLANNED ACCESS ROAD.

Roads currently exist.

3. LOCATION OF EXISTING WELLS.

There is no existing wells on this 40 acres.

4. LOCATION OF EXISTING/OR PROPOSED FACILITIES

If well is productive for oil and gas, production facilities will be installed and maintained on existing well site.

5. LOCATION AND TYPE OF WATER SUPPLY.

It is planned to re enter the proposed well with a brine water system. The water will be obtained from commercial sources and will be hauled to the location by truck.

6. SOURCE OF CONSTRUCTION MATERIALS.

Location already exists, no additional material needed.

7. METHODS OF HANDLING WASTE DISPOSAL.

- A. Drill cuttings will be disposed of in the reserve pit.
- B. Drilling fluids will be allowed to evaporate in the reserve pits until the pits are dry.
- C. Produced water during operations will be stored in reserve pits until dry.
- 5 D. Oil produced during operations will be stored in tanks until sold.
- E. Current laws and regulations pertaining to the disposal of human waste will be complied with.
- F. Trash, waste paper, garbage and junk will be buried in a separate trash pit and covered with a minimum of 24 inches of dirt. All waste material will be contained to prevent scattering by the wind.
- G. All trash and debris will be buried or removed from the wellsite within 30 days after finishing drilling and or completion of operations.

8. ANCILLARY FACILITIES

None required.

9. WELLSITE LAYOUT.

Exhibit C shows the relative location and dimensions of the well pad, the reserve pits,

10. PLANS FOR RESTORATION OF THE SURFACE.

- A. After finishing drilling and completion operations, all equipment and other material not needed for further operations will be removed. The location will be cleaned of all trash and junk to leave the wellsite in as aesthetically pleasing a condition as possible.
- B. Unguarded pits, if any containing fluids will be fenced until they have been filled.
- C. If the proposed well is non-productive, all rehabilitation and or vegetation requirements of the BLM and USGS will be complied with and will be accomplished as expeditiously as possible. All pits will be filled and leveled within 90 days after abandonment.

11. OTHER INFORMATION.

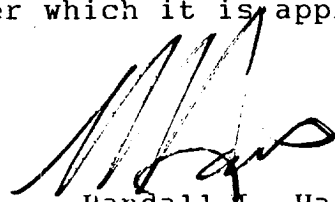
- A. Topography: The land surface in the vicinity of the wellsite is on a caliche hill.
- B. Flora and Fauna: The vegetation cover consists of prairie grass. greasewood and miscellaneous desert growth. No wildlife was observed, but wildlife in the area probably includes those typical of semi-arid desert land. The area is used for cattle grazing
- C. There are no ponds, lakes or rivers in the area.
- D. There are no inhabited dwelling in the vicinity of the proposed well.
- E. Surface Ownership: The wellsite is on federal surface.
- F. No evidence of archeological sites has been reported.

12. OPERATOR' REPRESENTATIVE

Ray Westall
P.O. Box 4,
Loco Hills, NM 88255
(505) 677-2370

13. CERTIFICATION.

I hereby certify that I, or persons under my direct supervision, have inspected the proposed drillsite and access route, that I am familiar with the conditions which presently exist; that the statements made in this plan are to the best of my knowledge true and correct; and that the work associated with the operations proposed herein will be performed by the operator and it's subcontractors in conformity with this plan and the terms and conditions under which it is approved.



Randall L. Harris

