

UNITED STATES
DEPARTMENT OF THE INTERIOR
BUREAU OF LAND MANAGEMENT

SUBMIT IN TRIPLICATE*

Form approved. 1077
Budget Bureau No. 1004-0136
Expires August 31, 1985

ARTESIA, NM 88210

APPLICATION FOR PERMIT TO DRILL, DEEPEN, OR PLUG BACK

1a. TYPE OF WORK

DRILL ☒

DEEPEN ☐

PLUG BACK ☐

b. TYPE OF WELL

OIL WELL ☐

GAS WELL ☒

OTHER ☐

SINGLE ZONE ☐

MULTIPLE ZONE ☐

2. NAME OF OPERATOR

Mewbourne Oil Company

3. ADDRESS OF OPERATOR

P.O. Box 5270 Hobbs, New Mexico 88241

4. LOCATION OF WELL (Report location clearly and in accordance with any State requirements.)

At surface

1980' FNL & 2200' FEL

At proposed prod. zone

Same

14. DISTANCE IN MILES AND DIRECTION FROM NEAREST TOWN OR POST OFFICE*

10 miles North of Carlsbad, New Mexico

16. DISTANCE FROM PROPOSED*

LOCATION TO NEAREST
PROPERTY OR LEASE LINE, FT.
(Also to nearest drlg. unit line, if any)

1980'

17. NO. OF ACRES IN LEASE

ARTESIA
320

18. DISTANCE FROM PROPOSED LOCATION*

TO NEAREST WELL, DRILLING, COMPLETED,
OR APPLIED FOR, ON THIS LEASE, FT.

19. PROPOSED DEPTH

11,300'

20. ROTARY OR CABLE TOOLS

Rotary

21. ELEVATIONS (Show whether DF, RT, GR, etc.)

3292' GR

22. APPROX. DATE WORK WILL START*

Upon BLM approval

23.

PROPOSED CASING AND CEMENTING PROGRAM

SIZE OF HOLE	SIZE OF CASING	WEIGHT PER FOOT	SETTING DEPTH	QUANTITY OF CEMENT
17 1/2"	13 3/8"	61#	450'±	400 sks. Class "C" Circulated
11"	8 5/8"	24#	3,000'±	1200 sks. Tie back into Class "C" surface csg.
7 7/8"	5 1/2"	17# & 20#	11,300'±	800 sks. Class "H" (See stips)

Mud Program

0' - 450' Spud mud w/fresh water gel and lime. LCM as needed.
450' - 3000' Brine water, LCM as needed.
3000' - 9500' Cut brine w/lime for pH control. Wt. 9.2-9.6 ppg, WL - NC, LCM as needed.
9500' - 11,300' WL 10 cc or less. Raise wt. accordingly if abnormal pressures are encountered. Cut brine w/Drispac, salt gel, lime, soda ash, and starch. Wt. 9.2-9.6 ppg.

BOP Program

900 series BOP and hydril on 13 3/8" surface casing and 8 5/8" intermediate casing.

Gas is not dedicated.

APPROVAL SUBJECT TO
GENERAL REQUIREMENTS AND
SPECIAL STIPULATIONS
ATTACHED

IN ABOVE SPACE DESCRIBE PROPOSED PROGRAM: If proposal is to deepen or plug back, give data on present productive zone and proposed new productive zone. If proposal is to drill or deepen directionally, give pertinent data on subsurface locations and measured and true vertical depths. Give blowout preventer program, if any.

24.

SIGNED

TITLE District Supt.

DATE 07/20/90

(This space for Federal or State office use)

PERMIT NO.

APPROVAL DATE

APPROVED BY

TITLE DISTRICT MANAGER

DATE

CONDITIONS OF APPROVAL, IF ANY:

*See Instructions On Reverse Side

Title 18 U.S.C. Section 1001, makes it a crime for any person knowingly and willfully to make to any department or agency of the United States any false, fictitious or fraudulent statements or representations as to any matter within its jurisdiction.

INSTRUCTIONS

GENERAL: This form is designed for submitting proposals to perform certain well operations, as indicated, on all types of lands and leases for appropriate action by either a Federal or a State agency, or both, pursuant to applicable Federal and/or State laws and regulations. Any necessary special instructions concerning the use of this form and the number of copies to be submitted, particularly with regard to local, area, or regional procedures and practices, either are shown below or will be issued by, or may be obtained from, the local Federal and/or State office.

ITEM 1: If the proposal is to redrill to the same reservoir at a different subsurface location or to a new reservoir, use this form with appropriate notations. Consult applicable State or Federal regulations concerning subsequent work proposals or reports on the well.

ITEM 4: If there are no applicable State requirements, locations on Federal or Indian land should be described in accordance with Federal requirements. Consult local State or Federal office for specific instructions.

ITEM 14: Needed only when location of well cannot readily be found by road from the land or lease description. A plat, or plats, separate or on this reverse side, showing the roads to, and the surveyed location of, the well, and any other required information, should be furnished when required by Federal or State agency offices.

ITEMS 15 AND 18: If well is to be, or has been directionally drilled, give distances for subsurface location of hole in any present or objective production zone.

ITEM 22: Consult applicable Federal or State regulations, or appropriate officials, concerning approval of the proposal before operations are started.

NOTICE

The Privacy Act of 1974 and the regulation in 43 CFR 2.48(d) provide that you be furnished the following information in connection with information required by this application.

AUTHORITY: 30 U.S.C. 181 et seq., 25 U.S.C. 396; 43 CFR Part 3160.

PRINCIPAL PURPOSE: The information is to be used to process and evaluate your application for permit to drill, deepen, or plug back an oil or gas well.

ROUTINE USES: (1) The analysis of the applicant's proposal to discover and extract the Federal or Indian resources encountered. (2) The review of procedures and equipment and the projected impact on the land involved. (3) The evaluation of the effects of proposed operation on surface and subsurface water and other environmental impacts. (4)(5) Information from the record and/or the record will be transferred to appropriate Federal, State, local or foreign agencies, when relevant to civil, criminal or regulatory investigations or prosecutions, as well as routine regulatory responsibility.

EFFECT OF NOT PROVIDING INFORMATION: Filing of this application and disclosure of the information is mandatory only if the lessee elects to initiate drilling operation on an oil and gas lease.

The Paperwork Reduction Act of 1980 (44 U.S.C. 3501 et seq) requires us to inform you that:

This information is being collected to allow evaluation of the technical, safety, and environmental factors involved with drilling for oil and/or gas on Federal and Indian oil and gas leases.

This information will be used to analyze and approve applications.

Response to this request is mandatory only if the lessee elects to initiate drilling operations on an oil and gas lease.

MULTI-POINT SURFACE USE AND OPERATING PLAN

MEWBOURNE OIL COMPANY

FEDERAL "V" WELL NO. 1

2200' FEL & 1980' FNL OF SEC. 8-T20S-R28E

EDDY COUNTY, NEW MEXICO

NEW MEXICO LEASE NO. NM-83584

This plan is submitted with the Application for Permit to Drill (APD) the above described well. The purpose of the plan is to describe the location of the proposed well, the proposed construction activities and operations plan and the magnitude of necessary surface disturbance involved, so that a complete appraisal can be made of the environmental effects associated with the operation. The surface to be disturbed is privately owned and a surface use agreement has been signed with the land owner.

1. EXISTING ROADS:

- A. Exhibit "A" is a portion of an Eddy County, New Mexico road map showing the location of the proposed well as staked. From the junction of U.S. Highway 285 and North Canal Street in Carlsbad, New Mexico, proceed north on Canal Street, which becomes Eddy County Road #206, for 10 miles. Turn right (east) on Eddy County Road #237 and proceed 1 1/2 miles. Turn left and proceed 1/4 mile to location.
- B. Culverts: None required.
- C. Cuts and Fills: A two foot cut will be required for construction of the location.
- D. Turn-Outs: None Required.
- E. Gates and cattleguards: None required.

2. LOCATION OF EXISTING WELLS:

- A. Existing wells in a 1 mile radius are shown of Exhibit "B".

3. LOCATION OF PROPOSED FACILITIES:

- A. If the well is productive, all production facilities will be constructed on the existing pad and no additional surface disturbance will occur.

4. LOCATION AND TYPE OF WATER SUPPLY:

- A. Water will be purchased and trucked to the wellsite over the existing and proposed roads shown on Exhibits "A" and "AA".

5. SOURCE OF CONSTRUCTION MATERIALS:

- A. Caliche for surfacing the road and location could possibly be obtained from the construction site. In the event that construction material cannot be obtained at the wellsite, caliche will be taken from a BLM pit located in the SW4/NE4 of Section 21-T20S-R28E, which would be BLM pit #20282107.

6. METHODS OF HANDLING WASTE DISPOSAL:

- A. Drill cuttings will be disposed of in the drilling pits.
- B. Drilling fluids will be allowed to evaporate in the drilling pits until pits are dry.
- C. Water produced during tests will be disposed of in the drilling pits. Oil produced during tests will be stored in test tanks until sold.
- D. Current laws and regulations pertaining to the disposal of human water will be complied with.
- E. All trash, junk and other waste material will be contained to prevent scattering and will be removed and deposited in an approved sanitary landfill.
- F. All trash and debris will be buried or removed from the wellsite within 30 days after finishing drilling and/or completion operations.

7. ANCILLIARY FACILITIES:

- A. None required.

8. WELLSITE LAYOUT:

- A. Exhibit "C" shows the relative location and dimensions of the well pad, mud pits, reserve pit, trash pit, and location of major rig components.
- b. The pad and pit area has been staked and flagged.

9. PLANS AND RESTORATION OF THE SURFACE

- A. After completion of drilling and/or completion operations all equipment and other material not needed for operations will be removed. Pits will be filled and location cleaned of all trash and junk to leave the wellsite in an aesthetically pleasing condition as possible.

10. OTHER INFORMATION:

- A. The geologic surface formation consists of sandy clay loams and loamy sands. Vegetative cover is mostly mesquite, javelina bush, fluff grass, and broom weed.

B. The estimated tops of geologic markers are as follows:

Deleware	2865'	Strawn	10,054'
Bone Springs	4611'	Atoka	10,524'
Wolfcamp	8649'	Morrow	10,752'
Canyon	9662'	Chester	11,258'

C. The estimated depths at which anticipated water, oil, or gas are expected to be encountered:

Water: Possible surface water between 100-300'.

Oil: Deleware @ 2865'.

Gas: Wolfcamp @ 8649'.

D. Proposed Casing Program: See Form 9-331C.

E. Pressure Control Equipment: See Form 9-331C and Exhibit "D".

F. Mud Program: See Form 9-331C.

G. Auxiliary Equipment: Mud-gas seperator and PVT system
from 6,000' - T.D.

H. Testing and Coring Program: Possibility of 6 DST's in the
following zones: Wolfcamp, Canyon,
Strawn, Atoka, and Morrow.
No cores are planned at this time.

Logging: Gamma Ray - Spectral
Density - Dual Spaced Neutron Log; T.D. to surface
Gamma Ray - Dual Latero Log
Microguard Log - T.D. to Intermediate casing.

I. No abnormal pressures or temperatures are anticipated. In the
event abnormal pressures are encountered the proposed mud
program will be modified to increase the weight.

J. Anticipated Starting Date: As soon as possible after BLM
approval.

11. OPERATOR'S REPRESENTATIVE

The field representatives responsible for assuring compliance with
the approved surface use and operations plan are as follows:

W.H. Cravey
Erick Nelson
Bill Pierce

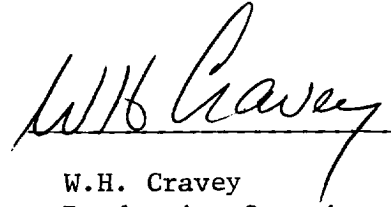
701 South Cecil Street
Hobbs, New Mexico
Phone: (505) 393-5905

12. CERTIFICATION:

I hereby certify that I, or persons under my direct supervision, have inspected the proposed drillsite and access route; that I am familiar with the conditions which presently exist; that the statements made in this plan are, to the best of my knowledge, true and correct; and that the work associated with the operations proposed herein will be performed by Mewbourne Oil Company and its contractors and subcontractors in conformity with this plan and the terms and conditions under which it is approved.

July 20, 1990

Date



W.H. Cravey
Production Superintendent
Mewbourne Oil Company

Submit to Appropriate
District Office
State Lease - 4 copies
Fee Lease - 3 copies

Energy, Minerals and Natural Resources Department

Form C-102
Revised 1-1-89

OIL CONSERVATION DIVISION

P.O. Box 2088

Santa Fe, New Mexico 87504-2088

DISTRICT I
P.O. Box 1980, Hobbs, NM 88240

DISTRICT II
P.O. Drawer DD, Artesia, NM 88210

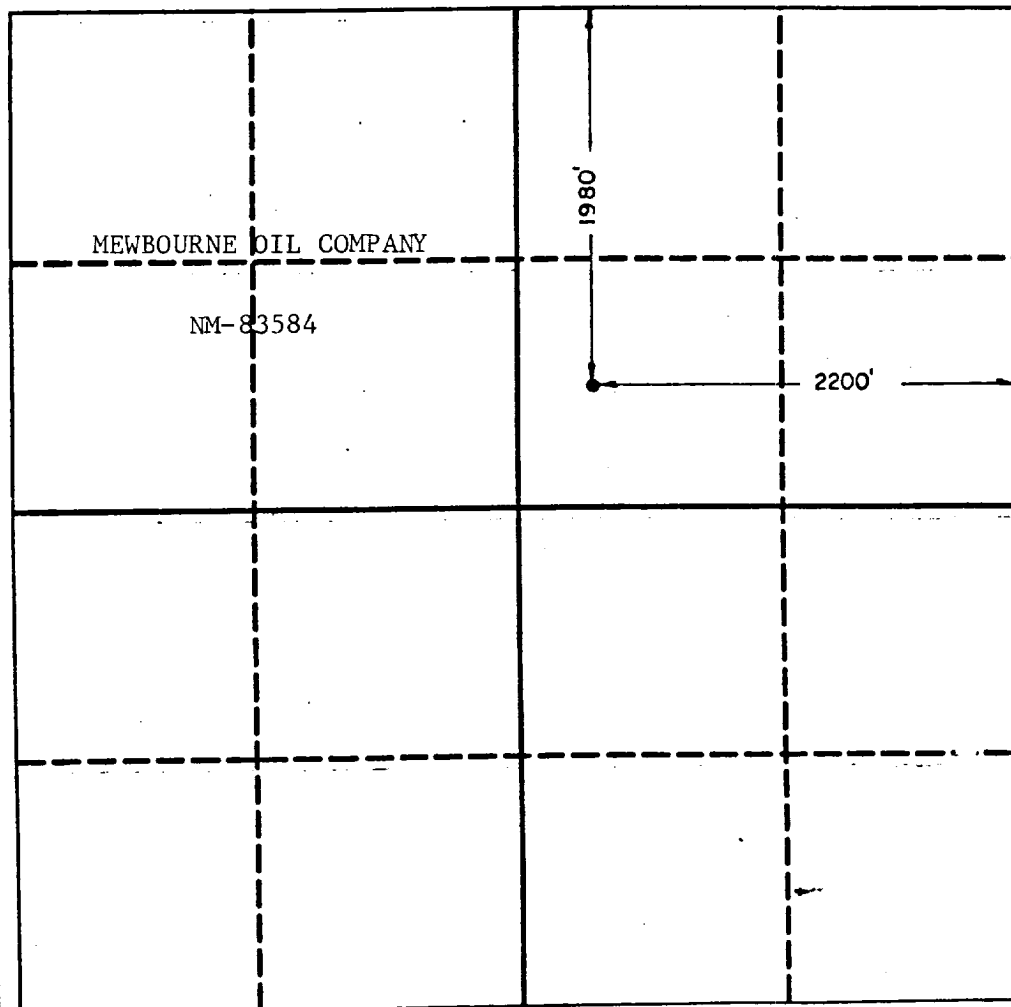
DISTRICT III
1000 Rio Brazos Rd., Aztec, NM 87410

WELL LOCATION AND ACREAGE DEDICATION PLAT

All Distances must be from the outer boundaries of the section

Operator MEWBOURNE OIL COMPANY			Lease FEDERAL "V"		Well No. 1
Unit Letter G	Section 8	Township 20 SOUTH	Range 28 EAST	County EDDY	
Actual Footage Location of Well: 1980 feet from the NORTH line and 2200 feet from the EAST line					
Ground level Elev. 3292	Producing Formation Morrow		Pool Burton Flat Morrow Gas Pool		Dedicated Acreage: 320 Acres

- Outline the acreage dedicated to the subject well by colored pencil or hatchure marks on the plat below.
- If more than one lease is dedicated to the well, outline each and identify the ownership thereof (both as to working interest and royalty).
- If more than one lease of different ownership is dedicated to the well, have the interest of all owners been consolidated by communitization, unitization, force-pooling, etc.?
☒ Yes ☐ No If answer is "yes" type of consolidation Communitization
If answer is "no" list the owners and tract descriptions which have actually been consolidated. (Use reverse side of this form if necessary).
No allowable will be assigned to the well until all interests have been consolidated (by communitization, unitization, forced-pooling, or otherwise) or until a non-standard unit, eliminating such interest, has been approved by the Division.



OPERATOR CERTIFICATION

I hereby certify that the information contained herein is true and complete to the best of my knowledge and belief.

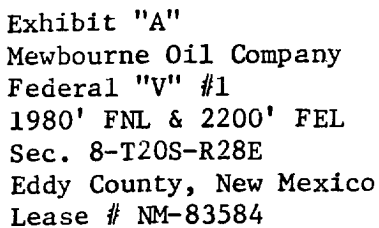
Signature W.H. Cravey
Printed Name **W.H. Cravey**
Position **District Supt.**
Company **Mewbourne Oil Company**
Date **June 07, 1990**

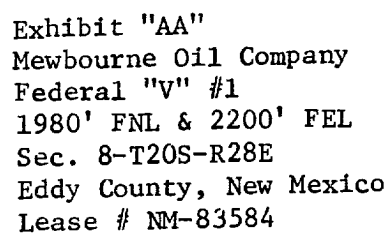
SURVEYOR CERTIFICATION

I hereby certify that the well location shown on this plat was plotted from field notes of actual surveys made by me or under my supervision, and that the same is true and correct to the best of my knowledge and belief.

Date Surveyed **6/5/90**
Signature & Seal of Professional Surveyor

Certificate No. **6640**





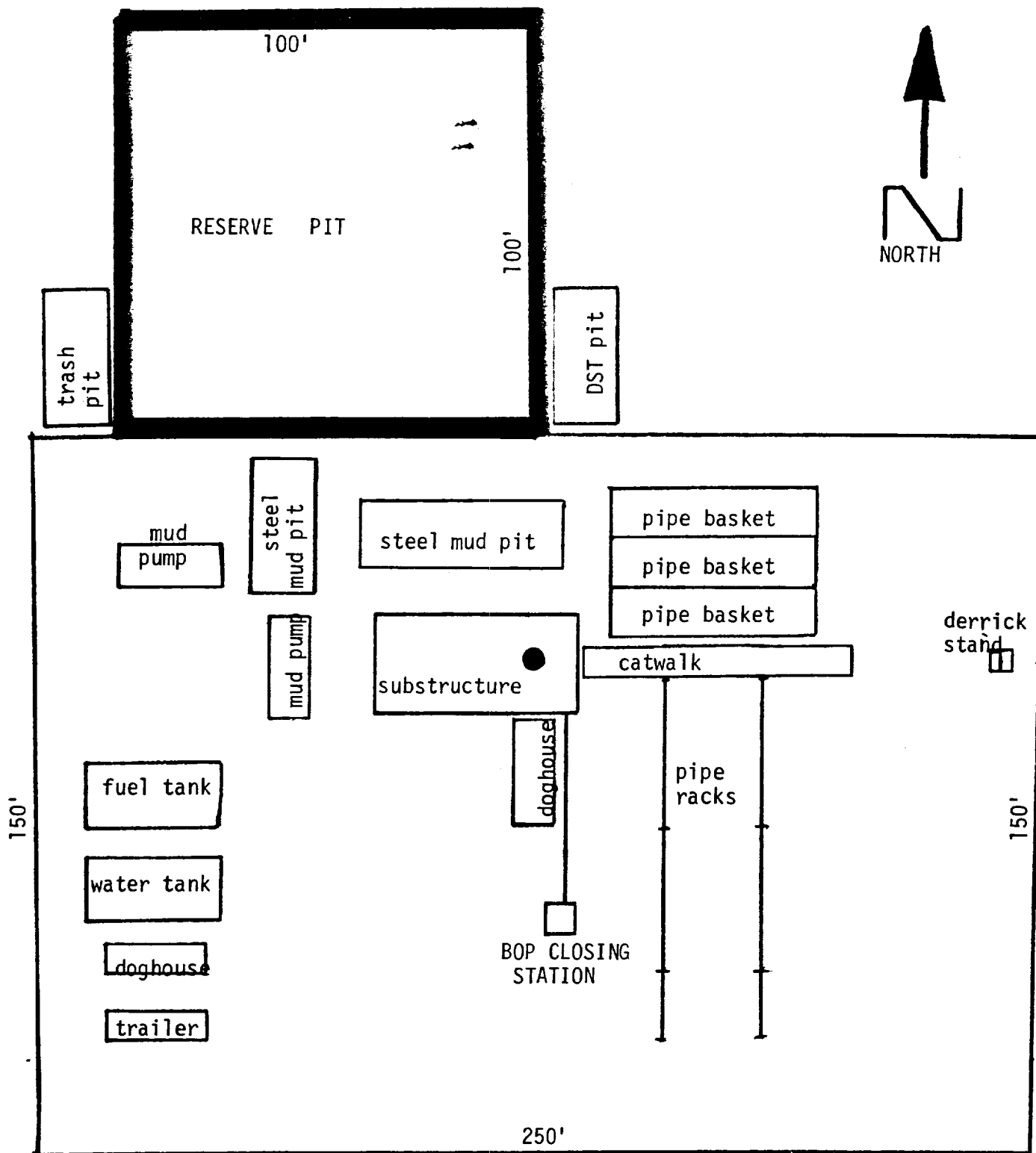


Exhibit "C"
Mewbourne Oil Company
Federal "V" #1
1980' FNL & 2200' FEL
Sec. 8-T20S-R28E
Eddy County, New Mexico
Lease # NM-83584

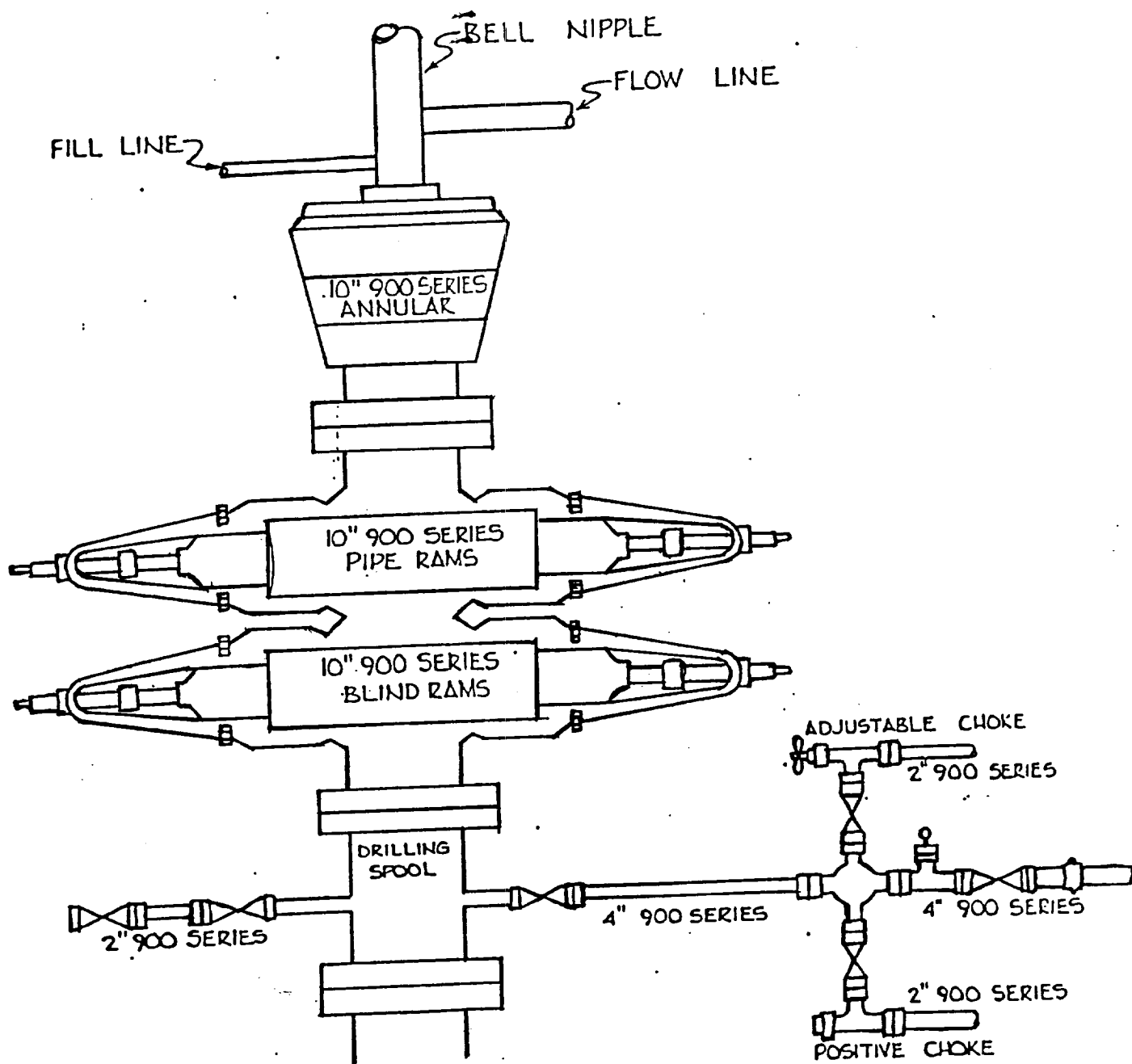


Exhibit "D"
Mewbourne Oil Company
Federal "V" #1
1980' FNL & 2200' FEL
Sec. 8-T20S-R28E
Eddy County, New Mexico
Lease # NM-83584