

Submit to Appropriate
District Office
State Lease - 6 copies
Fee Lease - 5 copies

State of New Mexico
Energy, Minerals and Natural Resources Department

Form C-101
Revised 1-1-89

OIL CONSERVATION DIVISION

P.O. Box 2088
Santa Fe, New Mexico 87504-2088

DISTRICT I
P.O. Box 1980, Hobbs, NM 88240

DISTRICT II
P.O. Drawer DD, Artesia, NM 88210

DISTRICT III
1000 Rio Brazos Rd., Aztec, NM 87410

AUG 31 '90

API NO. (assigned by OCD on New Wells)

5. Indicate Type of Lease

STATE ☒

FEE ☐

6. State Oil & Gas Lease No.
K-5261

7. Lease Name or Unit Agreement Name

WISER STATE

8. Well No.

2

9. Pool name or Wildcat

UND DELAWARE

APPLICATION FOR PERMIT TO DRILL, DEEPEN, OR PLUG BACK

1a. Type of Work:

DRILL ☒

RE-ENTER ☐

DEEPEN ☐

PLUG BACK ☐

b. Type of Well:

OIL
WELL ☒

GAS
WELL ☐

OTHER ☐

SINGLE
ZONE ☐

MULTIPLE
ZONE ☐

2. Name of Operator

CHI OPERATING, INC.

3. Address of Operator

P. O. BOX 1799, MIDLAND, TX 79702

4. Well Location

Unit Letter

N

330

Feet From The

SOUTH

Line and

1890

Feet From The

WEST

Line

Section

9

Township

21S

Range

26E

NMPM

EDDY

County

10. Proposed Depth

4,200'

11. Formation

DELAWARE

12. Rotary or C.T.

ROTARY

13. Elevations (Show whether DF, RT, GR, etc.)

3289 GR

14. Kind & Status Plug. Bond

\$50,000 BLANKET

15. Drilling Contractor

16. Approx. Date Work will start

09/15/90

PROPOSED CASING AND CEMENT PROGRAM

SIZE OF HOLE	SIZE OF CASING	WEIGHT PER FOOT	SETTING DEPTH	SACKS OF CEMENT	EST. TOP
17 1/2"	13 3/8"	54#	350'	300	SURFACE
12 1/4"	8 5/8"	24#	2,050'	1,000	SURFACE
7 7/8"	5 1/2"	17#	4,200'	700	2,000'

It is proposed to drill this well to TD of 4,200' and test the Delaware formation.

The blowout prevention program is as follows:

BOP is a 10" Camron SF Space Saver with double hydraulics.

IN ABOVE SPACE DESCRIBE PROPOSED PROGRAM: IF PROPOSAL IS TO DEEPEN OR PLUG BACK, GIVE DATA ON PRESENT PRODUCTIVE ZONE AND PROPOSED NEW PRODUCTIVE ZONE. GIVE BLOWOUT PREVENTER PROGRAM, IF ANY.

I hereby certify that the information above is true and complete to the best of my knowledge and belief.

SIGNATURE

TITLE PRESIDENT

DATE 08/29/90

915

TELEPHONE NO. 685-5001

TYPE OR PRINT NAME

DAVID H. HARRISON

(This space for State Use)

ORIGINAL SIGNED BY

MIKE WILLIAMS

SUPERVISOR, DISTRICT II

APPROVED BY

TITLE

DATE

SEP 3 1990

CONDITIONS OF APPROVAL, IF ANY:

85/8

**NEW MEXICO OIL CONSERVATION COMMISSION
WELL LOCATION AND ACREAGE DEDICATION PLAT**

Form C-102
Supersedes C-128
Effective 1-1-65

All distances must be from the outer boundaries of the Section.

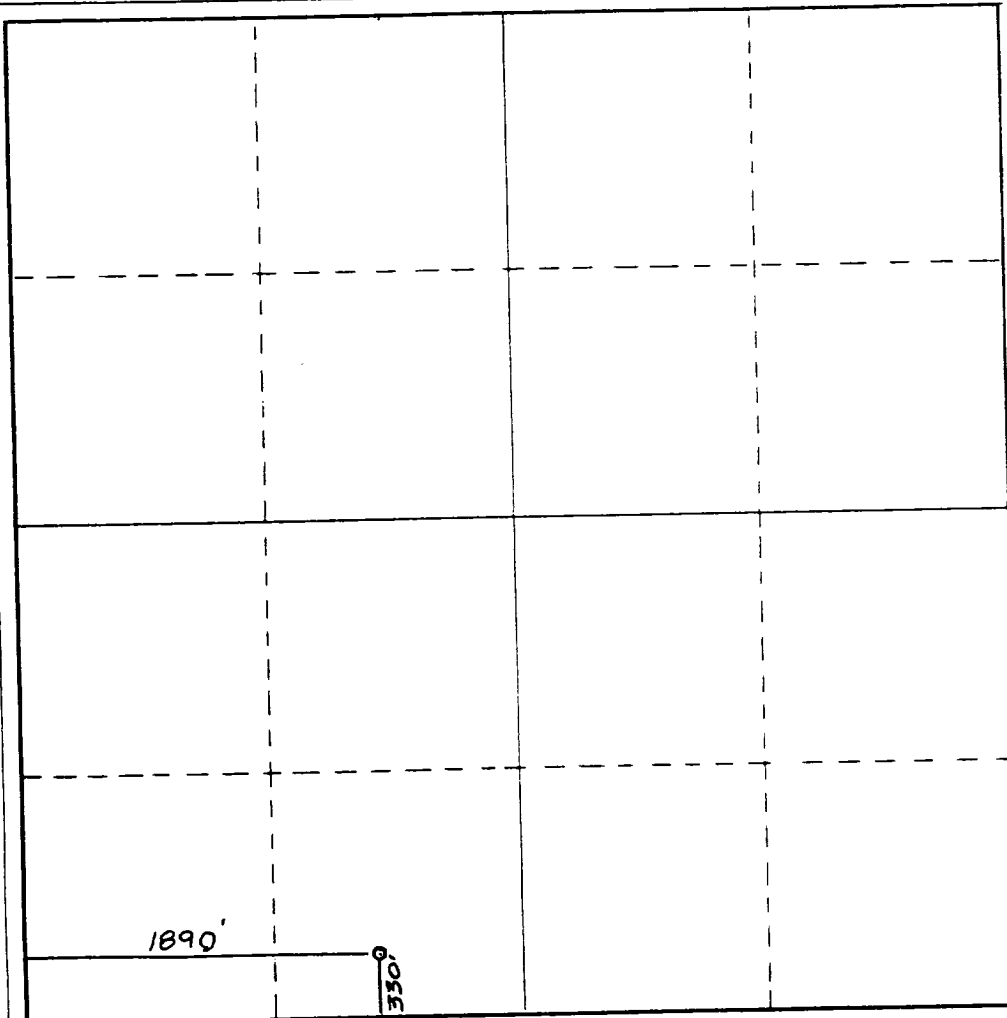
Operator CHI OPERATING, INC.			Lease Wiser State		Well No. 2
Unit Letter N	Section 9	Township 21 South	Range 26 East	County Eddy County, N.M.	
Actual Footage Location of Well: 1890 feet from the West line and 330 feet from the South line					
Ground Level Elev. 3288.	Producing Formation DELAWARE		Pool UND. DELAWARE	Dedicated Acreage: 40 Acres	

1. Outline the acreage dedicated to the subject well by colored pencil or hachure marks on the plat below.
2. If more than one lease is dedicated to the well, outline each and identify the ownership thereof (both as to working interest and royalty).
3. If more than one lease of different ownership is dedicated to the well, have the interests of all owners been consolidated by communitization, unitization, force-pooling, etc?

☐ Yes ☐ No If answer is "yes," type of consolidation _____

If answer is "no," list the owners and tract descriptions which have actually been consolidated. (Use reverse side of this form if necessary.) _____

No allowable will be assigned to the well until all interests have been consolidated (by communitization, unitization, forced-pooling, or otherwise) or until a non-standard unit, eliminating such interests, has been approved by the Commission.



CERTIFICATION

I hereby certify that the information contained herein is true and complete to the best of my knowledge and belief.

[Signature]

Name
DAVID H. HARRISON

Position
PRESIDENT

Company
CHI OPERATING, INC.

Date
08/28/90

I hereby certify that the well location shown on this plat was plotted from field notes of actual surveys made by me or under my supervision, and that the same is true and correct to the best of my knowledge and belief.

Date Surveyed
August 27, 1990

Registered Professional Engineer and/or Land Surveyor

[Signature]

Certificate No.
NM PE&PS NO. 5412