

Submit to Appropriate
District Office
State Lease - 6 copies
Fee Lease - 5 copies

State of New Mexico
Energy, Minerals and Natural Resources Department

Form C-101
Revised 1-1-89

DISTRICT I
P.O. Box 1980, Hobbs, NM 88240

DISTRICT II
P.O. Drawer DD, Artesia, NM 88210

DISTRICT III
1000 Rio Brazos Rd., Aztec, NM 87410

OIL CONSERVATION DIVISION

P.O. Box 2088
Santa Fe, New Mexico 87504-2088

AUG 29 '90

API NO. (assigned by OCD on New Wells)

30-015-26462

5. Indicate Type of Lease

STATE ☒

FEE ☐

6. State Oil & Gas Lease No.

K-5261

APPLICATION FOR PERMIT TO DRILL, DEEPEN, OR PLUG BACK

1a. Type of Work:

DRILL ☒

RE-ENTER ☐

DEEPEN ☐

PLUG BACK ☐

b. Type of Well:

OIL

WELL ☒

GAS

WELL ☐

OTHER ☐

SINGLE

ZONE ☐

MULTIPLE

ZONE ☐

7. Lease Name or Unit Agreement Name

WISER STATE

2. Name of Operator

CHI OPERATING, INC.

8. Well No.

1

3. Address of Operator

P. O. BOX 1799, MIDLAND, TX 79702

9. Pool name or Wildcat

UND. DELAWARE

4. Well Location

Unit Letter

F

: 2268

Feet From The

NORTH

Line and

2097

Feet From The

WEST

Line

Section

9

Township

21S

Range

26E

NMPM

EDDY

County

10. Proposed Depth

4,200'

11. Formation

DELAWARE

12. Rotary or C.T.

ROTARY

13. Elevations (Show whether DF, RT, GR, etc.)

3230 GR

14. Kind & Status Plug Bond

\$50,000 BLANKET

15. Drilling Contractor

16. Approx. Date Work will start

09/05/90

17.

PROPOSED CASING AND CEMENT PROGRAM

SIZE OF HOLE	SIZE OF CASING	WEIGHT PER FOOT	SETTING DEPTH	SACKS OF CEMENT	EST. TOP
17 1/2"	13 3/8"	54#	350	300	SURFACE
12 1/4"	8 5/8"	24#	2,050	1,000	SURFACE
7 7/8"	5 1/2"	17#	4,200	700	2,000'

It is proposed to drill this well to TD of 4,200 and test the Delaware Formation.

The blowout prevention program is as follows:

BOP is 10" Camron SF Space Saver with double hydraulics.

Post ID-1
9-7-90
New Doc & APF

IN ABOVE SPACE DESCRIBE PROPOSED PROGRAM: IF PROPOSAL IS TO DEEPEN OR PLUG BACK, GIVE DATA ON PRESENT PRODUCTIVE ZONE AND PROPOSED NEW PRODUCTIVE ZONE. GIVE BLOWOUT PREVENTER PROGRAM, IF ANY.

I hereby certify that the information above is true and complete to the best of my knowledge and belief.

SIGNATURE

David H. Harrison

TITLE

PRESIDENT

DATE

08/28/90

TYPE OR PRINT NAME

DAVID H. HARRISON

915-

TELEPHONE NO. 685-5001

(This space for State Use)

ORIGINAL SIGNED BY

MIKE WILLIAMS

SUPERVISOR, DISTRICT II

APPROVED BY

TITLE

DATE

SEP 3 1990

CONDITIONS OF APPROVAL, IF ANY:

85/8

MEXICO OIL CONSERVATION COMM. N
WELL LOCATION AND ACREAGE DEDICATION PLAT

Form C-102
Supersedes C-128
Effective 1-1-65

All distances must be from the outer boundaries of the Section.

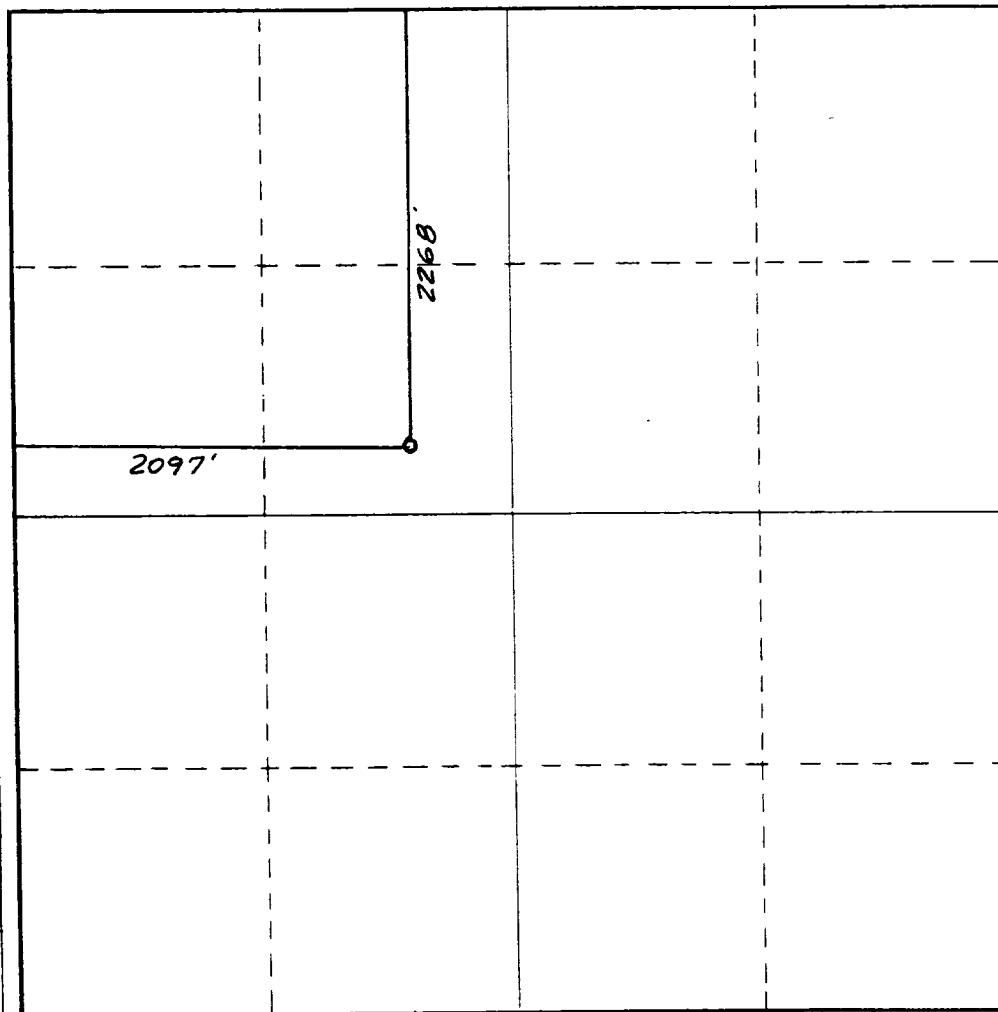
Operator CHI OPERATING INC.			Lease Wiser State		Well No. 1
Unit Letter F	Section 9	Township 21 South	Range 26 East	County Eddy County, N.M.	
Actual Footage Location of Well: 2097 feet from the West line and 2268 feet from the North line					
Ground Level Elev. 3230.	Producing Formation DELAWARE		Pool UND. DELAWARE		Dedicated Acreage: 40 Acres

1. Outline the acreage dedicated to the subject well by colored pencil or hachure marks on the plat below.
2. If more than one lease is dedicated to the well, outline each and identify the ownership thereof (both as to working interest and royalty).
3. If more than one lease of different ownership is dedicated to the well, have the interests of all owners been consolidated by communitization, unitization, force-pooling, etc?

☐ Yes ☐ No If answer is "yes," type of consolidation _____

If answer is "no," list the owners and tract descriptions which have actually been consolidated. (Use reverse side of this form if necessary.) _____

No allowable will be assigned to the well until all interests have been consolidated (by communitization, unitization, forced-pooling, or otherwise) or until a non-standard unit, eliminating such interests, has been approved by the Commission.



CERTIFICATION

I hereby certify that the information contained herein is true and complete to the best of my knowledge and belief.

David H. Harrison

Name

DAVID H. HARRISON

Position

PRESIDENT

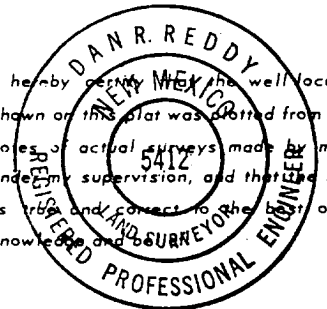
Company

CHI OPERATING, INC.

Date

08/28/90

I hereby certify the well location shown on this plat was plotted from field notes of actual surveys made by me or under my supervision, and that the same is true and correct to the best of my knowledge and belief.



Date Surveyed

August 27, 1990

Registered Professional Engineer and/or Land Surveyor

Dan R. Reddy

Certificate No.

NM PE&PS NO. 5412

