

NE., MEXICO OIL CONSERVATION COMMISSION
WELL LOCATION AND ACREAGE DEDICATION PLAT

Form C-102
Supersedes C-128
Effective 1-1-65

All distances must be from the outer boundaries of the Section.

RECEIVED

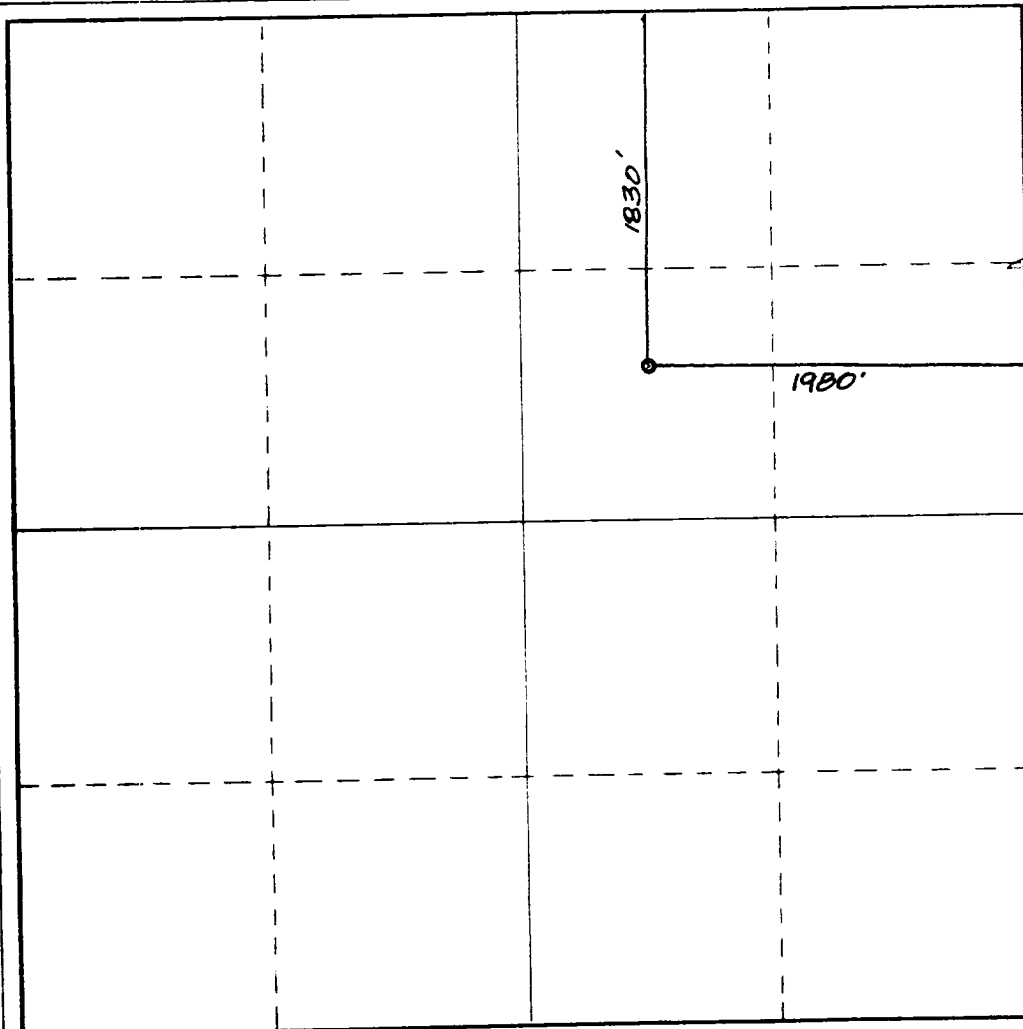
Operator THE PETROLEUM CORPORATION OF DELAWARE			Lease Superior Federal		Well No. 9
Unit Letter G	Section 1	Township 20 South	Range 29 East	County Eddy County, N.M.	
Actual Footage Location of Well: 1830 feet from the North line and 1980 feet from the East line					
Ground Level Elev. 3317.	Producing Formation Morrow		Pool East Burton Flat - Morrow		Dedicated Acreage: 320 Acres

1. Outline the acreage dedicated to the subject well by colored pencil or hachure marks on the plat below.
2. If more than one lease is dedicated to the well, outline each and identify the ownership thereof (both as to working interest and royalty).
3. If more than one lease of different ownership is dedicated to the well, have the interests of all owners been consolidated by communitization, unitization, force-pooling, etc?

☐ Yes ☒ No If answer is "yes," type of consolidation _____

If answer is "no," list the owners and tract descriptions which have actually been consolidated. (Use reverse side of this form if necessary.) _____

No allowable will be assigned to the well until all interests have been consolidated (by communitization, unitization, forced-pooling, or otherwise) or until a non-standard unit, eliminating such interests, has been approved by the Commission.



CERTIFICATION

I hereby certify that the information contained herein is true and complete to the best of my knowledge and belief.

Name
[Signature]
Position
District Operations Engineer
Company
The Petroleum Corporation of Delaware
Date
11-27-90

I hereby certify that the well location shown on this plat was plotted from field notes of actual surveys made by me or under my supervision, and that the same is true and correct to the best of my knowledge and belief.

Date Surveyed
October 22, 1990
Registered Professional Engineer and/or Land Surveyor

[Signature]
Certificate No.

NM PE&PS NO. 5482

1. Identification of Lands Subject to this Agreement

North One-Half (N/2) Section 1, Township 20 South (T-20-S), Range 29 East (R-29-E), Eddy County, New Mexico

(a) NM-0144698 in-so-far as it covers Lots 2, 3, 4, SW/4 NE/4, and S/2 NW/4 Section 1

(b) NM-81929 in-so-far as it covers Lot 1 and SE/4 NE/4 Section 1 - None

The Petroleum Corporation of Delaware
Siete Oil & Gas Corporation
Ameriplor Corp.
American Production Partnership, Ltd III
American Production Partnership, Ltd. IV
Hal S. Dean
Howard C. Warren
Estate of E. J. Rousuck, Deceased
Yates Petroleum Corporation
Yates Drilling Company
Abo Petroleum Corporation
Myco Industries, Incorporated
David Petroleum Corporation
Colin R. McMillan
Permian Exploration Corporation