

Submit to Appropriate  
District Office  
State Lease - 6 copies  
Fee Lease - 5 copies

State of New Mexico  
Energy, Minerals and Natural Resources Department

Form C-101  
Revised 1-1-89

OIL CONSERVATION DIVISION  
P.O. Box 2088  
Santa Fe, New Mexico 87504-2088

RECEIVED  
DEC 27 1991

O. C. D.  
ARTESIA OFFICE

DISTRICT I  
P.O. Box 1980, Hobbs, NM 88240

DISTRICT II  
P.O. Drawer DD, Artesia, NM 88210

DISTRICT III  
1000 Rio Brazos Rd., Aztec, NM 87410

30-115-26906

API NO. (assigned by OCD on New Wells)
L - 5036
5. Indicate Type of Lease STATE <input checked="" type="checkbox"/> FEE <input type="checkbox"/>
6. State Oil & Gas Lease No.

APPLICATION FOR PERMIT TO DRILL, DEEPEN, OR PLUG BACK					
1a. Type of Work: DRILL <input checked="" type="checkbox"/> RE-ENTER <input type="checkbox"/> DEEPEN <input type="checkbox"/> PLUG BACK <input type="checkbox"/>				7. Lease Name or Unit Agreement Name Glider "AKG" State	
b. Type of Well: OIL WELL <input type="checkbox"/> GAS WELL <input checked="" type="checkbox"/> OTHER <input type="checkbox"/>				8. Well No. 1	
2. Name of Operator Yates Petroleum Corporation				9. Pool name or Wildcat Burton Flat Morrow	
3. Address of Operator 105 South Fourth Street, Artesia, NM 88210					
4. Well Location Unit Letter F : 1980 Feet From The North Line and 1980 Feet From The West Line Section 17 Township 21S Range 27E NMPM Eddy County					
10. Proposed Depth 11,800'				11. Formation Morrow	
12. Rotary or C.T. Rotary					
13. Elevations (Show whether DF, RT, GR, etc.) 3204'		14. Kind & Status Plug. Bond Blanket		15. Drilling Contractor Not designated	
16. Approx. Date Work will start ASAP					
17. PROPOSED CASING AND CEMENT PROGRAM					
SIZE OF HOLE	SIZE OF CASING	WEIGHT PER FOOT	SETTING DEPTH	SACKS OF CEMENT	EST. TOP
17 1/2"	13 3/8"	54.5#	600'	As warranted	Circulated
12 1/4"	9 5/8" 5/8"	36#	2,700'	As warranted	Circulated
7 7/8"	4 1/2"	23 & 26#	TD	As warranted	

Yates Petroleum Corporation proposes to drill and test the Morrow and intermediate formations. Approximately 600' of surface casing will be set and cement circulated to shut off gravel and cavings. An intermediate string will be set at approximately 2700' and cement circulated. If commercial, production casing will be run and cemented with adequate cover, perforated and stimulated as needed for production.

MUD PROGRAM: FW/Gel to 600'; FW to 2700'; cut Brine to TD.

BOP PROGRAM: BOP's will be installed on the offset and tested daily for operational.

APPROVED FOR 180 DAYS  
6/30/92  
MAY BE EXTENDED BY

IN ABOVE SPACE DESCRIBE PROPOSED PROGRAM: IF PROPOSAL IS TO DEEPEN OR PLUG BACK, GIVE DATA ON PRESENT PRODUCTIVE ZONE AND PROPOSED NEW PRODUCTIVE ZONE. GIVE BLOWOUT PREVENTER PROGRAM, IF ANY.

I hereby certify that the information above is true and complete to the best of my knowledge and belief.

SIGNATURE Ken Beardemph TITLE Landman DATE 12-20-91  
TYPE OR PRINT NAME Ken Beardemph TELEPHONE NO. 748-1471

(This space for State Use) ORIGINAL SIGNED BY  
MIKE WILLIAMS  
SUPERVISOR, DISTRICT II

APPROVED BY \_\_\_\_\_ TITLE \_\_\_\_\_ DATE DEC 30 1991

CONDITIONS OF APPROVAL, IF ANY:

13-38 18 5/8

Submit to Appropriate  
District Office  
State Lease - 4 copies  
Fee Lease - 3 copies

State of New Mexico  
Energy, Minerals and Natural Resources Department

Form C-102  
Revised 1-1-89

OIL CONSERVATION DIVISION

P.O. Box 2088  
Santa Fe, New Mexico 87504-2088

RECEIVED

DEC 27 1991

O. C. D.  
ARTESIA OFFICE

DISTRICT I  
P.O. Box 1980, Hobbs, NM 88240

DISTRICT II  
P.O. Drawer DD, Artesia, NM 88210

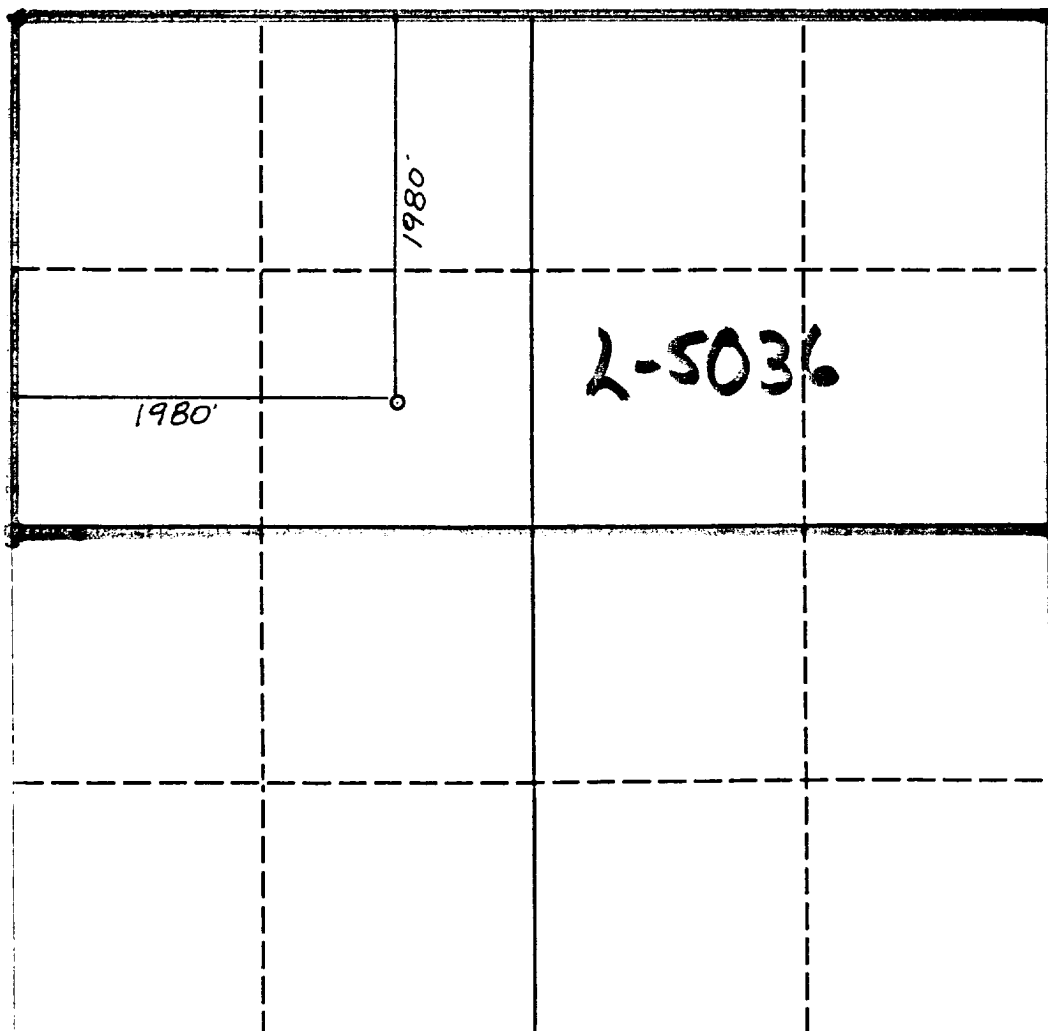
DISTRICT III  
1000 Rio Brazos Rd., Aztec, NM 87410

WELL LOCATION AND ACREAGE DEDICATION PLAT

All Distances must be from the outer boundaries of the section

Operator <b>YATES PETROLEUM CORPORATION</b>			Lease <b>GLIDER AKG STATE</b>		Well No. <b>1</b>
Unit Letter <b>F</b>	Section <b>17</b>	Township <b>21 SOUTH</b>	Range <b>27 EAST</b>	County <b>EDDY COUNTY, NM</b>	
Actual Footage Location of Well: <b>1980</b> feet from the <b>NORTH</b> line and <b>1980</b> feet from the <b>WEST</b> line Ground level Elev. <b>3204.</b> Producing Formation <b>Morrow</b> Pool <b>Borton Flat Morrow</b> Dedicated Acreage: <b>320</b> Acres					

1. Outline the acreage dedicated to the subject well by colored pencil or hatchure marks on the plat below.
2. If more than one lease is dedicated to the well, outline each and identify the ownership thereof (both as to working interest and royalty).
3. If more than one lease of different ownership is dedicated to the well, have the interest of all owners been consolidated by communitization, unitization, force-pooling, etc.?  
☐ Yes ☐ No If answer is "yes" type of consolidation \_\_\_\_\_  
If answer is "no" list the owners and tract descriptions which have actually been consolidated. (Use reverse side of this form if necessary).  
No allowable will be assigned to the well until all interests have been consolidated (by communitization, unitization, forced-pooling, or otherwise) or until a non-standard unit, eliminating such interest, has been approved by the Division.



OPERATOR CERTIFICATION

I hereby certify that the information contained herein is true and complete to the best of my knowledge and belief.

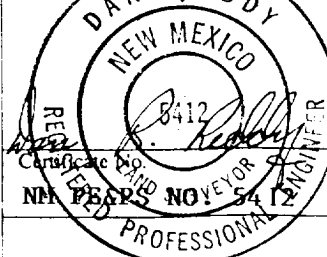
Signature *Ken Beard*  
Printed Name **KEN BEARD**  
Position **LANDMAN**  
Company **Yates Pet. Corp.**  
Date **12-20-91**

SURVEYOR CERTIFICATION

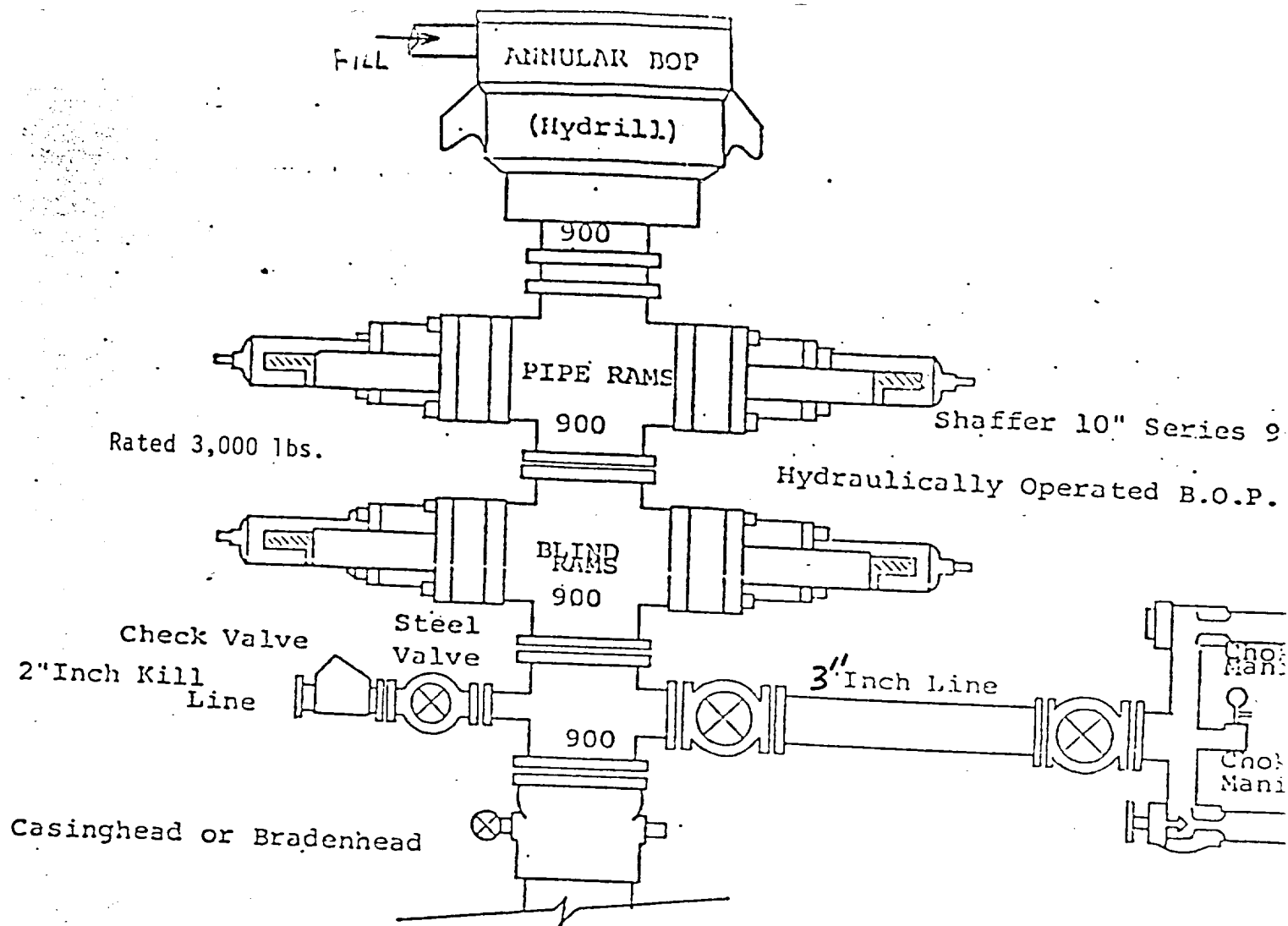
I hereby certify that the well location shown on this plat was plotted from field notes of actual surveys made by me or under my supervision, and that the same is true and correct to the best of my knowledge and belief.

Date Surveyed  
**DECEMBER 12, 1991**

Signature & Seal of  
Professional Surveyor



0 330 660 990 1320 1650 1980 2310 2640 2000 1500 1000 500 0



THE FOLLOWING CONSTITUTE MINIMUM BLOWOUT PREVENTER REQUIREMENTS

1. All preventers to be hydraulically operated with secondary manual control installed prior to drilling out from under casing.
2. Choke outlet to be a minimum of 3" diameter.
3. Kill line to be of all steel construction of 2" minimum diameter.
4. All connections from operating manifolds to preventers to be all steel hole or tube a minimum of one inch in diameter.
5. The available closing pressure shall be at least 15% in excess of that required with sufficient volume to operate the B.O.P.'s.
6. All connections to and from preventer to have a pressure rating equivalent to that of the B.O.P.'s.
7. Inside blowout preventer to be available on rig floor.
8. Operating controls located a safe distance from the rig floor.
9. Hole must be kept filled on trips below intermediate casing.

EXHIBIT  
B