

UNITED STATES
DEPARTMENT OF THE INTERIOR
GEOLOGICAL SURVEY

APPLICATION FOR PERMIT TO DRILL, DEEPEN, OR PLUG BACK

1a. TYPE OF WORK

DRILL ☒DEEPEN ☐PLUG BACK ☐

b. TYPE OF WELL

OIL
WELL ☐GAS
WELL ☒

OTHER

SINGLE
ZONE ☒MULTIPLE
ZONE ☐

2. NAME OF OPERATOR

Oryx Energy Company

RECEIVED

3. ADDRESS OF OPERATOR

P.O. Box 26300, Oklahoma City, O.K. 73126-0300

4. LOCATION OF WELL (Report location clearly and in accordance with any State requirements.)

At surface

J, 1724' FSL & 2052' FEL
At proposed prod. zone

14. DISTANCE IN MILES AND DIRECTION FROM NEAREST TOWN OR POST OFFICE*

12.3 miles North and 8.8 miles west of Carlsbad, New Mexico

15. DISTANCE FROM PROPOSED*

LOCATION TO NEAREST
PROPERTY OR LEASE LINE, FT.
(Also to nearest drilg. unit line, if any)

1724'

16. NO. OF ACRES IN LEASE

200

17. NO. OF ACRES ASSIGNED
TO THIS WELL

640

18. DISTANCE FROM PROPOSED LOCATION*
TO NEAREST WELL, DRILLING, COMPLETED,
OR APPLIED FOR, ON THIS LEASE, FT.

19. PROPOSED DEPTH

7600'

20. ROTARY OR CABLE TOOLS

Rotary

21. ELEVATIONS (Show whether DF, RT, GR, etc.)

+ / 3990' GR

22. APPROX. DATE WORK WILL START*

Upon approval

23.

4015.3'

405

PROPOSED CASING AND CEMENTING PROGRAM

SIZE OF HOLE	SIZE OF CASING	WEIGHT PER FOOT	SETTING DEPTH	QUANTITY OF CEMENT
17 1/2"	13-3/8"	48.0#	300' CIRCULATE	325sx Class C + 2% CaCL2
12 1/4"	8-5/8"	24.0#	2000' CIRCULATE	875 sx Class C Neat
7-7/8"	5-1/2"	15.5#	2850' (see slips)	775 sx Class C
		14.0#	7350'	

Part ID-1
1-24-92
Wheeler + HRI

Regular location

IN ABOVE SPACE DESCRIBE PROPOSED PROGRAM: If proposal is to deepen or plug back, give data on present productive zone and proposed new productive zone. If proposal is to drill or deepen directionally, give pertinent data on subsurface locations and measured and true vertical depths. Give blowout preventer program, if any.

24.

SIGNED

Jan Stevenson

TITLE Proration Analyst

DATE Dec. 17, 1991

(This space for Federal or State office use)

PERMIT NO.

APPROVAL DATE

APPROVED BY

TITLE

DATE 1-14-92

CONDITIONS OF APPROVAL, IF ANY:

APPROVAL SUBJECT TO
GENERAL REQUIREMENTS AND
SPECIAL STIPULATIONS
ATTACHED

*See Instructions On Reverse Side

Submit to Appropriate
District Office
State Lease - 4 copies
Fee Lease - 5 copies

State of New Mexico
Energy, Minerals and Natural Resources Department

Form C-102
Revised 1-1-89

OIL CONSERVATION DIVISION

P.O. Box 2088
Santa Fe, New Mexico 87504-2088

DISTRICT I

P.O. Box 1900, Hobbs, NM 88240

DISTRICT II

P.O. Drawer 88, Artesia, NM 88210

DISTRICT III

1000 Elie Brown Rd., Aztec, NM 87410

WELL LOCATION AND ACREAGE DEDICATION PLAT

All Distances must be from the outer boundaries of the section

Operator ORYX ENERGY CO.			Lease WEST INDIAN BASIN UNIT		Well No. 3
Unit Letter J	Section 20	Township 21 SOUTH	Range 23 EAST	County HMPH EDDY	
Actual Footage Location of Well: 1724 feet from the SOUTH line and 2052 feet from the EAST line					
Ground Level Elev. 4015.3	Producing Formation Upper Penn (Cisco)		Pool Indian Basin		Dedicated Acreage: 640 Acres

- Outline the acreage dedicated to the subject well by colored pencil or hatchure marks on the plat below.
 - If more than one lease is dedicated to the well, outline each and identify the ownership thereof (both as to working interest and royalty).
 - If more than one lease of different ownership is dedicated to the well, have the interest of all owners been consolidated by communitization, unitization, force-pooling, etc.?

☐ Yes
 ☐ No

If answer is "yes" type of consolidation Communitization #225
- If answer is "no" list of owners and tract descriptions which have actually been consolidated. (Use reverse side of this form necessary.)
- No allowable will be assigned to the well unit all interests have been consolidated (by communitization, unitization, force-pooling, otherwise) or until a non-standard unit, eliminating such interest, has been approved by the Division.

OPERATOR CERTIFICATION

I hereby certify the the information contained herein is true and complete to the best of my knowledge and belief.

Signature

Jan Stevenson

Printed Name

Proration Analyst

Position

Oryx Energy Company

Company

Dec. 17, 1991

Date

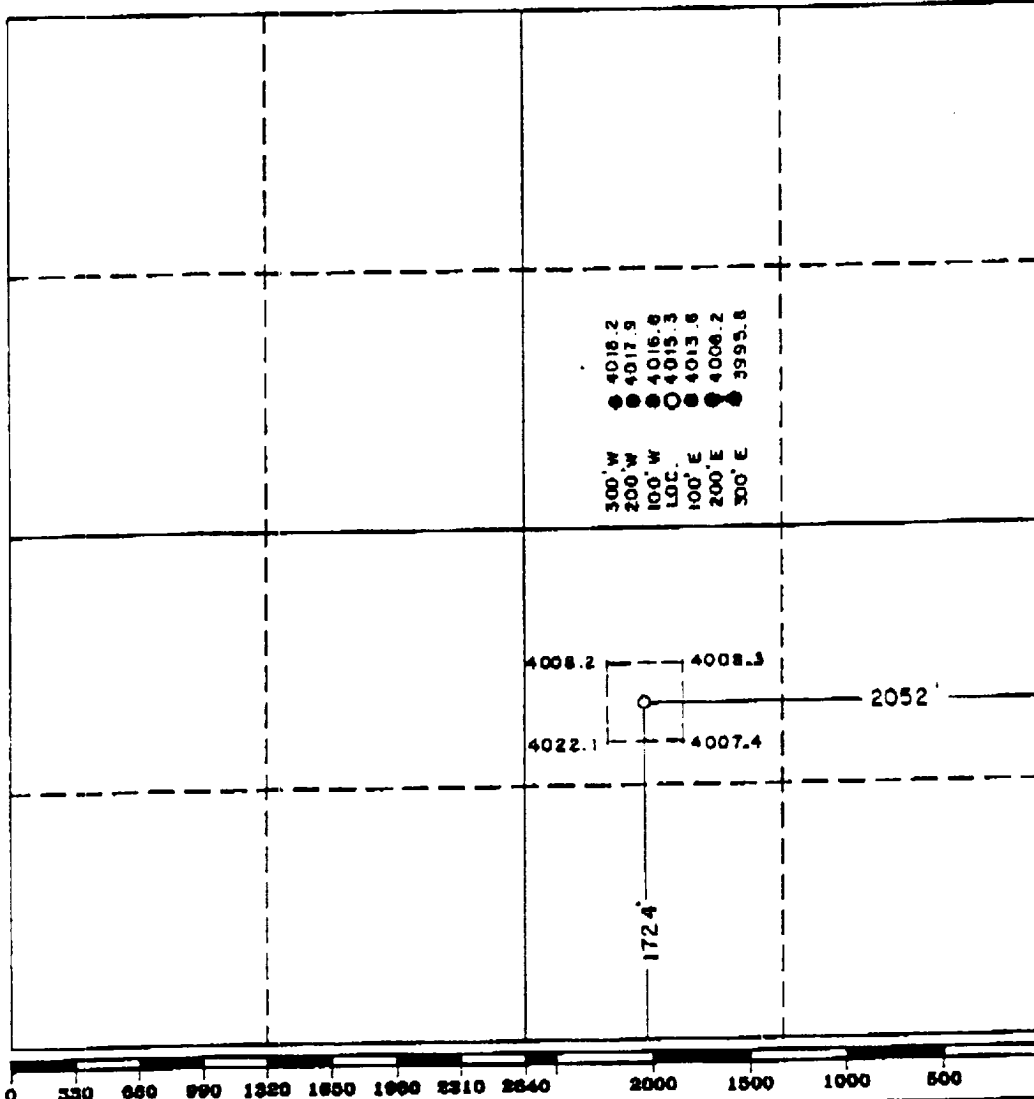
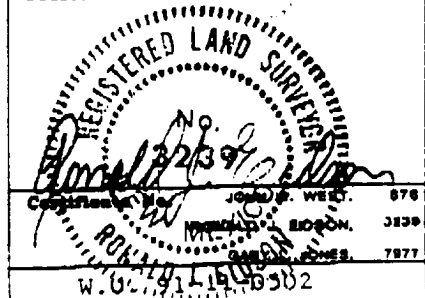
SURVEYOR CERTIFICATION

I hereby certify that the well location shown on this plat was plotted from field notes of actual surveys made by me or under my supervision and that the same is true and correct to the best of my knowledge and belief.

Date Surveyed

12-12-91

Signature & Seal of
Professional Surveyor



TEN POINT DRILLING PLAN FOR WEST INDIAN BASIN UNIT #3
IN COMPLIANCE WITH ORDER NUMBER 1

ORYX ENERGY COMPANY
WEST INDIAN BASIN #3
SEC. 20, T21S, R23E
1724' FSL & 2052' FEL
EDDY COUNTY, NEW MEXICO

1) GEOLOGIC SURFACE FORMATION: QUATERNARY

2) ESTIMATED TOPS OF IMPORTANT GEOLOGIC MARKERS:

WOLFCAMP	6080'
UPPER PENN (CISCO)	7050'*

3) ESTIMATED DEPTH OF ANTICIPATED WATER, OIL, GAS, OR MINERALS:
FORMATIONS POSSIBLY PRODUCTIVE WITH OIL OR GAS ARE INDICATED
WITH AN ASTERISK (*) IN ABOVE SECTION 2.

4) PROPOSED CASING PROGRAM:

SIZE	CASING SEAT	FOOTAGE	GRADE	WEIGHT & CONNECTION
----	-----	-----	-----	-----
13 3/8	300	300	H-40	48.0# ST&C
8 5/8	2000	2000	K-55	24.0# ST&C
5 1/2	7350	4500	K-55	14.0# ST&C
		2850	K-55	15.5# ST&C
2 7/8	TBG	7350	J-55	6.5# EUE

5) PROPOSED CEMENTING PROGRAM:

13 3/8" CEMENT TO SURFACE WITH 325 SX CLASS "C" + 2% CaCl₂

HOLE SIZE:	17 1/2"
WEIGHT:	14.8 PPG
CMT YIELD:	1.32 cu. ft./sx.
PERCENT EXCESS:	106%

8 5/8" ATTEMPT TO CEMENT TO SURFACE IN ONE STAGE USING
575 SX 65:35:6 C:POZ:GEL + 10 PPS GILSONITE & .5%
FLA; TAILED WITH 300 SX CLASS "C" NEAT

HOLE SIZE: 12 1/4"
CMT YIELD: LEAD 2.17 cu. ft./sx. WT: 12.1 PPG
CMT YIELD: TAIL 1.48 cu. ft./sx. WT: 14.8 PPG
PERCENT EXCESS: 100%

5 1/2" CEMENT IN ONE STAGE WITH 650 SX 65:35:6 H:POZ:GEL
10 PPS GILSONITE & 1% FLA; TAIL W/ 125 SX CLASS H
W/ 1% FLA & .3% DISPERSANT

HOLE SIZE: 7-7/8"
TOC LEAD: 2000' (66% EXCESS)
TOC TAIL: 6800' (55% EXCESS)
CMT YIELD: LEAD 2.12 cu. ft/sx WT: 12.1 PPG
TAIL 1.18 cu. ft/sx WT: 15.6 PPG

NOTE: CEMENT VOLUMES WILL BE ADJUSTED BY FLUID CALIPER ON
THE 8 5/8 AND ELECTRIC CALIPER ON THE 5 1/2 STRING.

6) TYPE AND MUD SYSTEM CHARACTERISTICS:

FROM	TO	TYPE	WT.	VISC.	WL
----	----	-----	-----	-----	-----
0	6000	FW W/ GEL, LIME & PAPER	8.4-8.6	28 - 30	NC
6000	TD	K/PHPA POLYMER	8.5-8.7	32-34	< 15 CC

7) BOP AND AUXILLARY EQUIPMENT:

BOP & CHOKE MANIFOLD WILL BE SETUP AS INDICATED ON EXHIBITS
#D1 THROUGH #D3.

ACCUMULATOR VOLUME WILL BE SUFFICIENT TO PROVIDE REPEATED
OPEN AND CLOSING OF PREVENTERS WITH 50% RESERVE.

A DRILL PIPE AND DRILL COLLAR FULL OPENING SAFETY VALVE WILL
BE KEPT ON THE RIG FLOOR IN THE OPEN POSITION AT ALL TIMES
DURING DRILLING OPERATIONS.

AN UPPER AND LOWER KELLY COCK WILL BE USED.

8) TEST PROCEDURE AND DRILLS:

RAM TYPE PREVENTERS WILL BE TESTED TO RATED W.P. OR 70% OF CASING BURST, WHICHEVER IS LESS.

ANNULAR PREVENTER WILL BE TESTED TO 50% OF RATED WORKING PRESSURE.

PIPE RAMS WILL BE OPERATED ONCE EACH 24 HRS., AND BLIND RAMS WILL BE OPERATED ON EACH TRIP OUT OF THE HOLE.

APPROVED CLOSE-IN PROCEDURE TO BE POSTED ON THE RIG FLOOR.

EACH RIG CREW WILL HOLD A WEEKLY BOP DRILL.

9) TESTING PROGRAM:

A DST MAY BE REQUIRED.(IN U-PENN)

OPEN HOLE LOGGING PROGRAM:

DIL-SFL, DENSITY & NEUTRON POROSITY; SONIC OPTIONAL
FROM TD TO 2000'

MUD LOGGING UNIT TO BE IN SERVICE FROM 5500' TO TOTAL DEPTH.

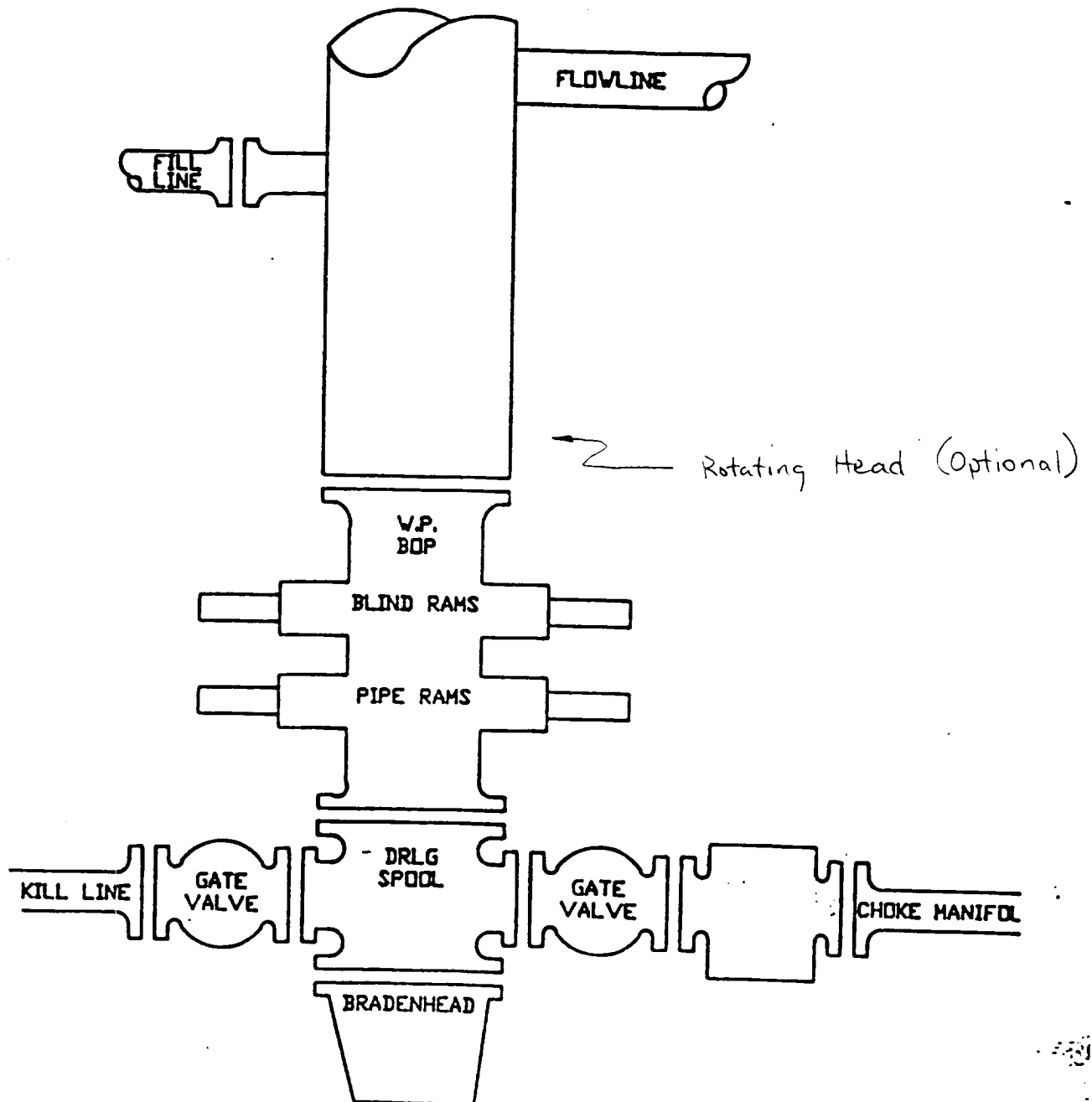
10) POTENTIAL HAZARDS:

NO H₂S, ABNORMAL TEMPERATURES OR PRESSURES ARE ANTICIPATED.

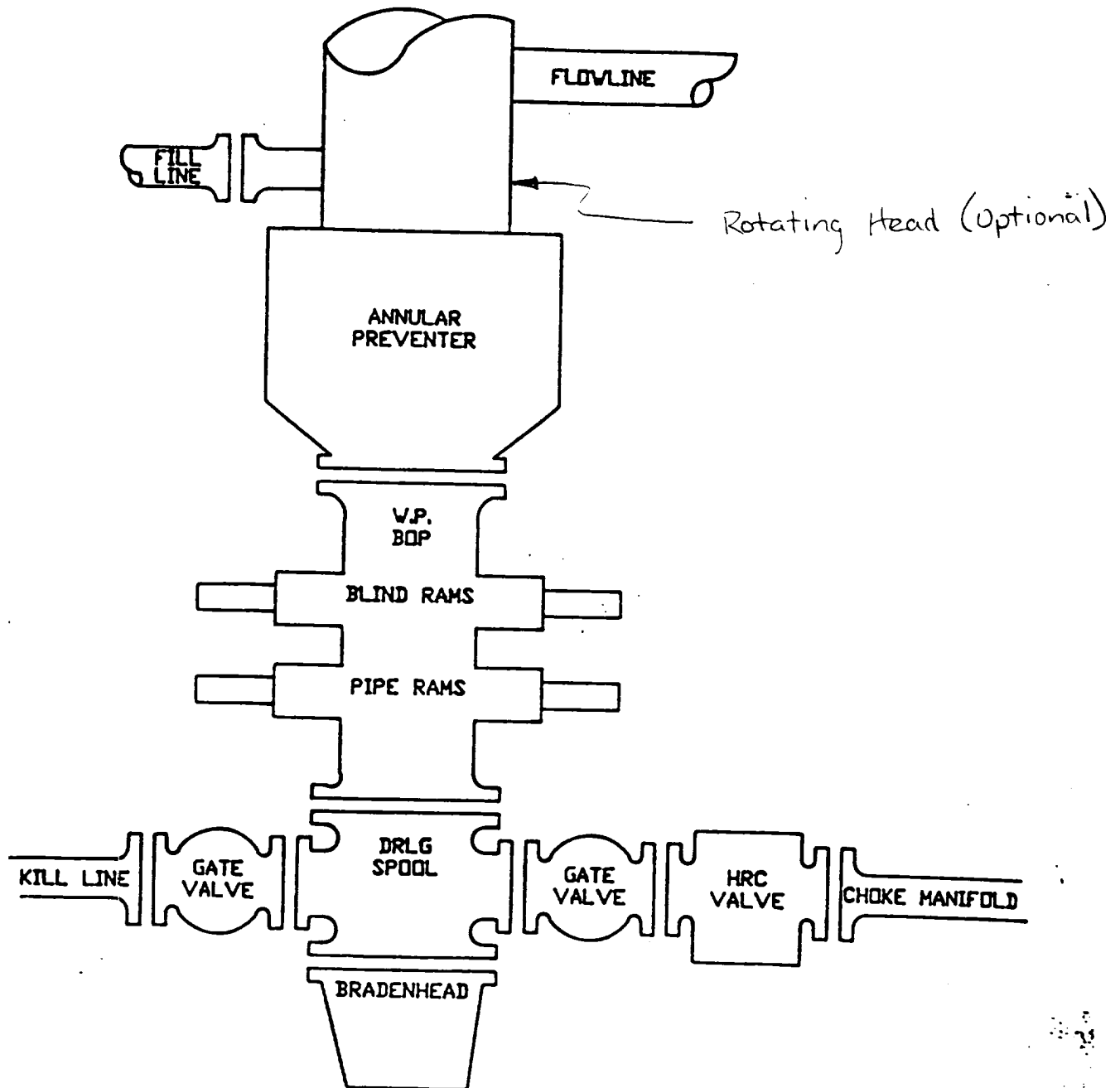
11) ESTIMATED STARTING DATE:

ANTICIPATE STARTING OPERATIONS ON OR BEFORE FEBRUARY 1, 1992.

D1
3000 psi WP
300' - 2000'



D2
5000 psi WP
2000' - 7350' TD



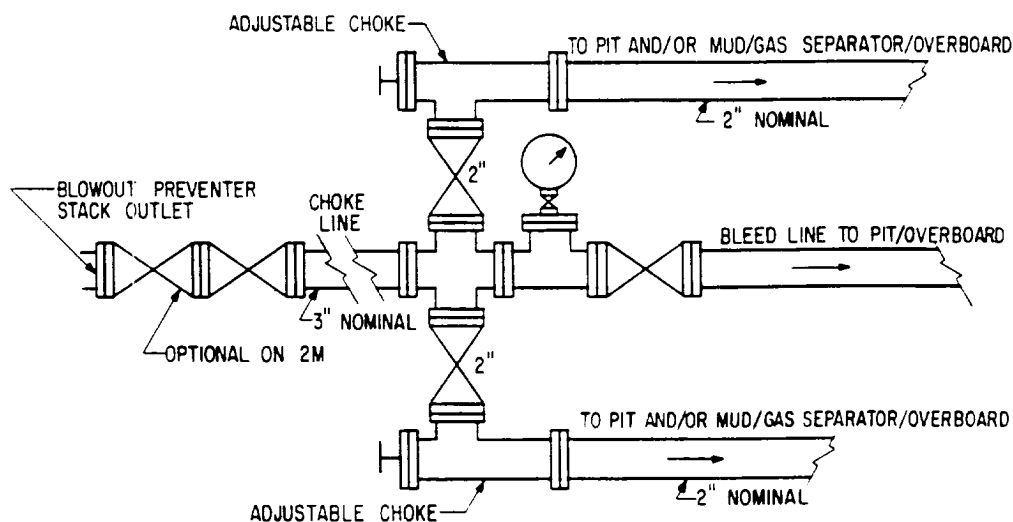


FIG. 3.A.1
EXAMPLE CHOKe MANIFOLD ASSEMBLY
FOR 2M AND 3M RATED WORKING
PRESSURE SERVICE — SURFACE INSTALLATION

3000 psi WP
300' - 2000'

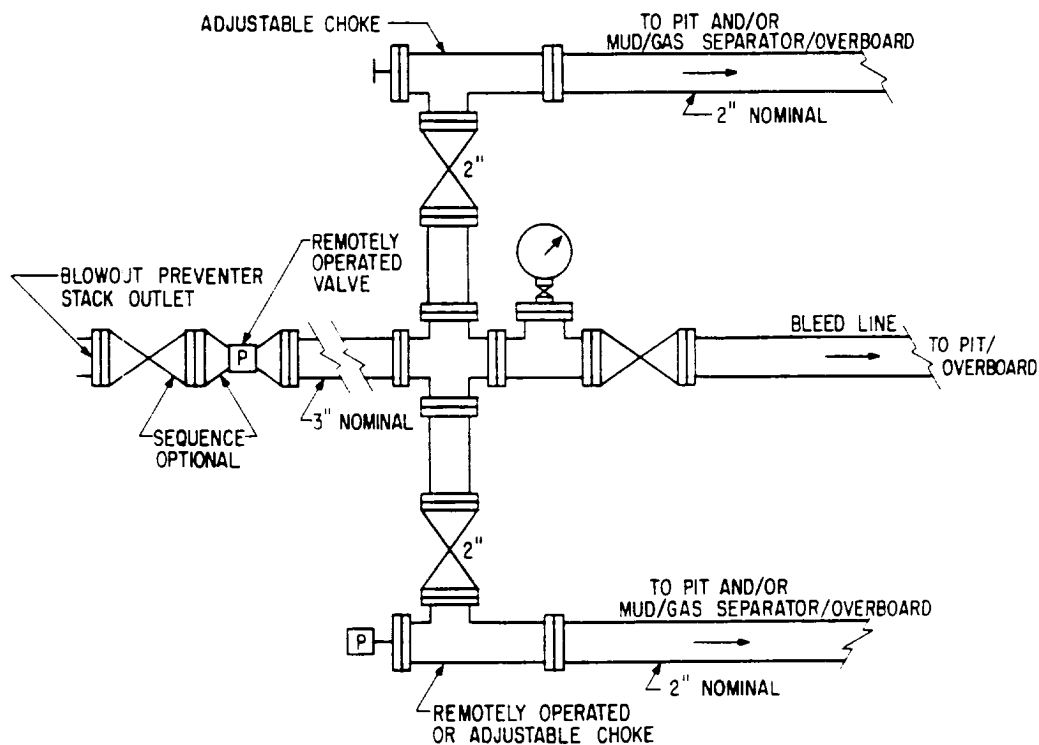


FIG. 3.A.2
EXAMPLE CHOKe MANIFOLD ASSEMBLY FOR 5M
RATED WORKING PRESSURE SERVICE —
SURFACE INSTALLATION

5000 psi WP
2000' - 7350'

MULTI-POINT SURFACE USE AND OPERATION

ORYX ENERGY COMPANY
WEST INDIAN BASIN UNIT #3
SEC. 20, T21S, R23E
1724' FSL & 2052' FEL
EDDY COUNTY, NEW MEXICO

1) EXISTING ROADS:

- A. THE PROPOSED WELLSITE AND EXISTING ROADS TO PROPOSED LOCATION ARE SHOWN IN EXHIBIT #1. THE DIRECTIONS TO THIS WELL ARE AS FOLLOWS:

FROM CARLSBAD, NEW MEXICO (INTERSECTION OF HWY AND 62-180) PROCEED NORTH ON HWY 285 FOR 12.3 MILES. TURN LEFT, GO WEST ON HWY 137 8.8 MILES TO FORK. TAKE RIGHT FORK (CR 401), GO 2.5 MILES PAST MARATHON GAS PLANT; TURN RIGHT, GO APPROXIMATELY 2200' TO WELL.

2) PLANNED ACCESS ROADS:

THE PROPOSED LOCATION WILL UTILIZE AN 2200' ACCESS ROAD SITUATED IN THE SE/4 OF SEC. 20 AND N/2 OF NE/4 OF SEC. 29.

3) LOCATION OF EXISTING WELLS:

EXISTING WELLS WITHIN A ONE-MILE RADIUS ARE SHOWN ON EXHIBIT #1.

4) LOCATION OF EXISTING AND/OR PROPOSED FACILITIES:

- A. EXISTING FACILITIES WITHIN A ONE-MILE RADIUS OF THE PROPOSED LOCATION CAN BE SEEN ON EXHIBIT # 1. THESE EXISTING FACILITIES INCLUDE OIL OR GAS WELLS AND THEIR RESPECTIVE BATTERIES.
- B. IF THE PROPOSED WELL IS COMPLETED AND PRODUCTIVE, PLANS ARE TO CONSTRUCT A TANK BATTERY AT THE WELL PAD AND NO ADDITIONAL SURFACE DISTURBANCE WILL OCCUR.

5) LOCATION AND TYPE OF WATER SUPPLY:

WATER WILL BE PURCHASED FROM A COMMERCIAL WATER HAULER AND TRUCKED TO THE PROPOSED WELLSITE.

6) SOURCE OF CONSTRUCTION MATERIALS:

CALICHE FOR CONSTRUCTING THE PROPOSED WELL LOCATION AND ACCESS ROAD WILL BE DETERMINED AND DISCUSSED WITH THE BLM.

7) METHODS OF HANDLING WASTE DISPOSAL:

- A. DRILL CUTTINGS WILL BE DISPOSED OF IN THE RESERVE PIT.
- B. DRILLING FLUID WILL BE HAULED OFF TO DISPOSAL AT COMPLETION OF DRILLING OPERATIONS.
- C. WATER PRODUCED DURING TESTS WILL BE DISPOSED OF IN THE RESERVE PITS. OIL PRODUCED DURING TESTS WILL BE STORED IN A TEST TANK UNTIL SOLD. GAS WILL BE FLARED.
- D. SALTS AND CHEMICALS WILL BE DEPOSITED IN THE RESERVE PIT.
- E. A PORTABLE SEPTIC TANK WILL BE USED AT THE LOCATION FOR THE DISPOSAL OF HUMAN WASTE. WASTE WILL BE DISPOSED OF AT AN APPROVED SITE.
- F. TRASH, WASTE PAPER, GARBAGE AND JUNK WILL BE CONTAINED IN TRASH TRAILER AND HAULED TO APPROVED LAND FILL.
- G. ALL TRASH AND DEBRIS WILL BE BURIED OR REMOVED FROM THE WELLSITE AFTER FINISHING DRILLING AND/OR COMPLETION OPERATIONS.

8) ANCILLARY FACILITIES:

NONE REQUIRED

9) WELLSITE LAYOUT:

- A. EXHIBIT #2 SHOWS THE GENERAL LOCATION AND DIMENSIONS OF THE WELL LOCATION, MUD PITS, RESERVE PIT, BURN PIT, AND THE AREA OF LOCATION FOR MAJOR RIG COMPONENTS.
- B. LEVELLING OF THE WELLSITE WILL BE REQUIRED. NO SIGNIFICANT CUT OR FILLS WILL BE NECESSARY.
- C. THE RESERVE PIT WILL BE PLASTIC LINED.

10) PLANS FOR RECLAMATION OF THE SURFACE:

- A. AFTER COMPLETION OF DRILLING AND TESTING PROGRAM, ALL EQUIPMENT AND OTHER MATERIAL NOT NEEDED FOR OPERATIONS WILL BE REMOVED. PITS WILL BE FILLED AND THE LOCATION CLEANED OF ALL TRASH AND JUNK.
- B. ANY UNGUARDED PITS CONTAINING FLUIDS WILL BE FENCED UNTIL THEY ARE FILLED.
- C. AGREEMENT BETWEEN DRILLING CONTRACTOR AND BLM TO STACK THE DRILLING RIG ON LOCATION WILL BE THE RESPONSIBILITY OF THE DRILLING CONTRACTOR.
- D. AFTER ABANDONMENT OF THE WELL, SURFACE RESTORATION WILL BE IN ACCORDANCE WITH THE REQUIREMENTS OF THE SURFACE MANAGEMENT AGENCY. PITS WILL BE FILLED AND LOCATION WILL BE CLEANED. THE PIT AREA, WELL PAD AND SURFACE LOCATION WILL BE RIPPED TO PROMOTE RE-VEGETATION.

11) SURFACE OWNERSHIP:

MINERAL OWNER:
BUREAU OF LAND MANAGEMENT
P.O. BOX 1778
CARLSBAD, NM 88220

SURFACE OWNER:
BUREAU OF LAND MANAGEMENT

12) OTHER INFORMATION:

- A. TOPOGRAPHY: LAND SURFACE IS GENTLY SLOPING WITH SILTY CLAY LOAM AND SPORADIC LIMESTONE OUTCROPS. VEGETATION CONSISTS OF YUCCA, DESERT SUMAC, JUNIPER, PRICKLY PEAR, AND VARIOUS GRAMA.

THE GROUND LEVEL ELEVATION OF THE WELLSITE IS 4015.3'.
- B. SOIL: SILTY CLAY LOAM.
- C. PONDS AND STREAMS: A RELATIVELY DEEP RAVINE SURROUNDS THE PROPOSED LOCATION ON THE NORTHWEST, NORTH, AND EAST SIDES. SPRINGS ARE PRESENT TO THE SOUTHEAST IN ROCK ROCK ARROYO. DRAINAGE IS TO EAST AND NORTHEAST TO BONE TANK DRAW.
- D. ARCHAEOLOGICAL SURVEY: AN ARCHAEOLOGICAL CLEARANCE SURVEY WAS CONDUCTED ON DECEMBER 16, 1991 BY AN INVESTIGATOR FROM NEW MEXICO ARCHAEOLOGICAL SERVICES, INC. THE ARCHAEOLOGICAL CLEARANCE REPORT IS ATTACHED. PROTECTION OF SITE NMAS 6003 WILL BE INCORPORATED INTO THE SURFACE USE PLAN.
- E. LAND USE: GRAZING

- 13) THE COMPANY REPRESENTATIVES RESPONSIBLE FOR ASSURING COMPLIANCE WITH THE APPROVED SURFACE USE AND OPERATIONS PLAN ARE AS FOLLOWS:

STEVE LIMKE
(405) 752-7243 (OFFICE)
(405) 340-2789 (HOME)
OKLAHOMA CITY, OK

BRENT MURPHY
(405) 752-7239 (OFFICE)
(405) 359-7335 (HOME)
OKLAHOMA CITY, OK

CERTIFICATION

I HEREBY CERTIFY THAT I, OR PERSONS UNDER MY DIRECT SUPERVISION, HAVE INSPECTED THE PROPOSED DRILL SITE AND ACCESS ROUTE; THAT I AM FAMILIAR WITH THE CONDITIONS WHICH CURRENTLY EXIST; THAT THE STATEMENTS MADE IN THIS PLAN ARE, TO THE BEST OF MY KNOWLEDGE, TRUE AND CORRECT; AND THAT THE WORK ASSOCIATED WITH OPERATIONS PROPOSED HEREIN WILL BE PERFORMED BY ORYX ENERGY COMPANY AND IT'S CONTRACTORS AND SUBCONTRACTORS IN CONFORMITY WITH THIS PLAN AND THE TERMS AND CONDITIONS UNDER WHICH IT IS APPROVED.



12-17-21
DATE

STEVE LIMKE
AREA DRILLING MANAGER

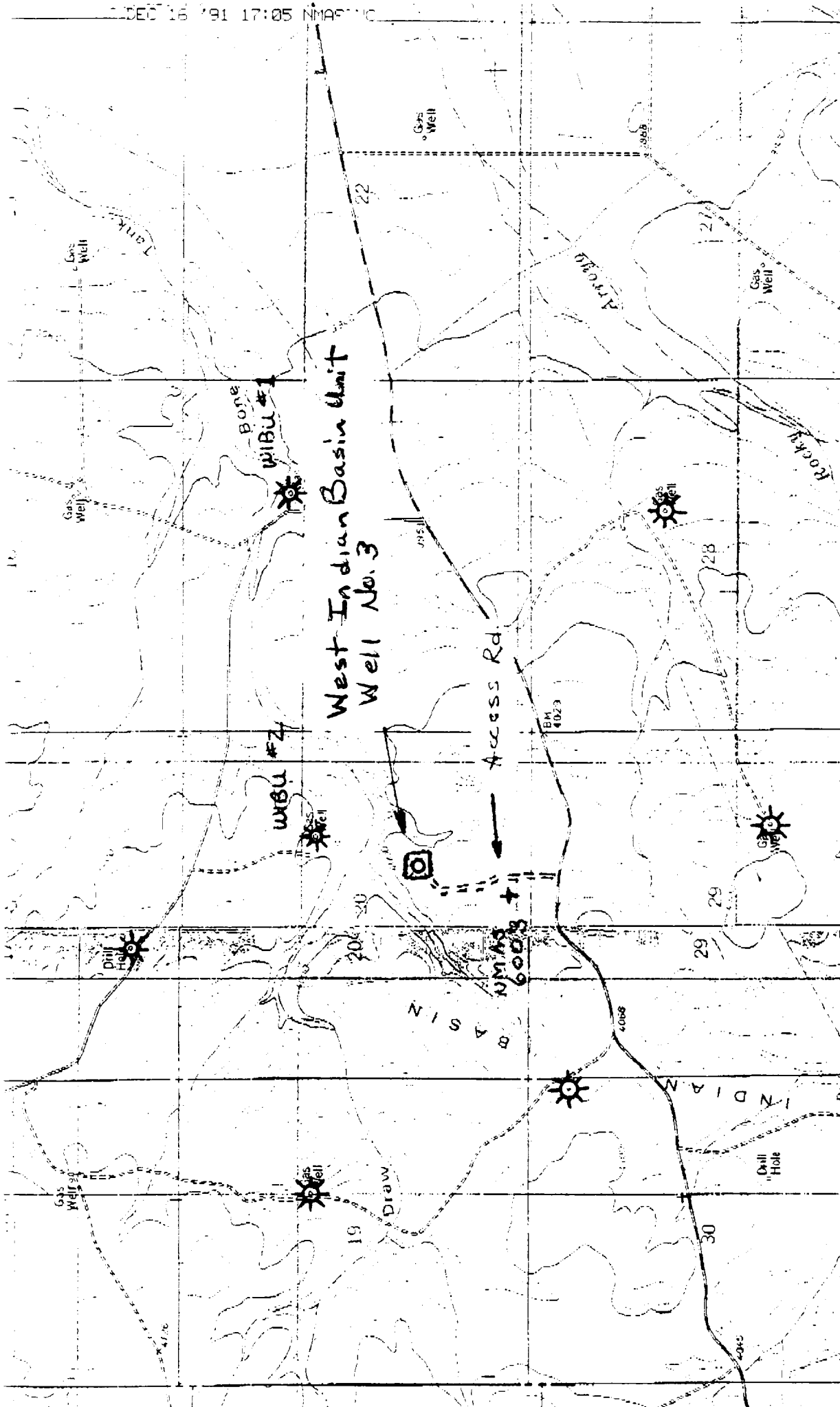
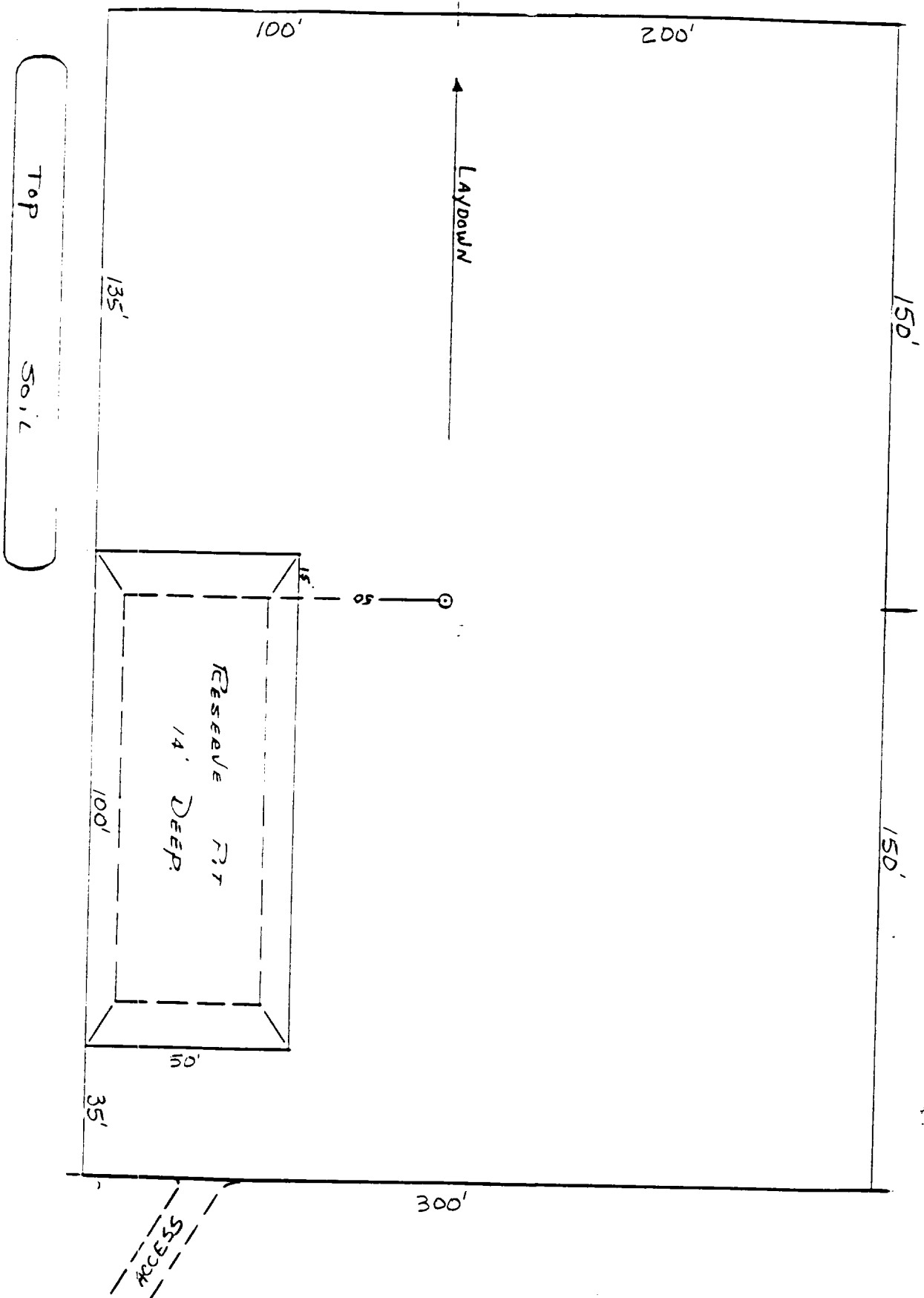


Fig. 1. USGS MARTHA CREEK QUADRANGLE, 7.5 Minute Series, 1:24,000, 1978, and USGS CAWLEY DRAW QUADRANGLE, 7.5 Minute Series, 1:24,000, 1978, showing ORYX ENERGY CORPORATION's proposed West Indian Basin Unit Well No. 3, 2052' FEL, 1724' FSL, and access road, Sections 20 and 29, T21S, R23E, NMPM, Eddy County, New Mexico, vis à vis NMAAS 6003.

EXHIBIT #1

West Indian Basin #3,
2052' FEL, 1724' FSL, Sec 20-21S-23E
Eddy Co., New Mexico

EXHIBIT #2



Not to Scale