

Submit to Appropriate
District Office
State Lease - 4 copies
Fee Lease - 3 copies

State of New Mexico
Energy, Minerals and Natural Resources Department

Form C-102
Revised 1-1-89

OIL CONSERVATION DIVISION

DISTRICT I

P.O. Box 1880, Hobbs, NM 88240

P.O. Box 2088

Santa Fe, New Mexico 87504-2088

DISTRICT II

P.O. Drawer DD, Artesia, NM 88210

DISTRICT III

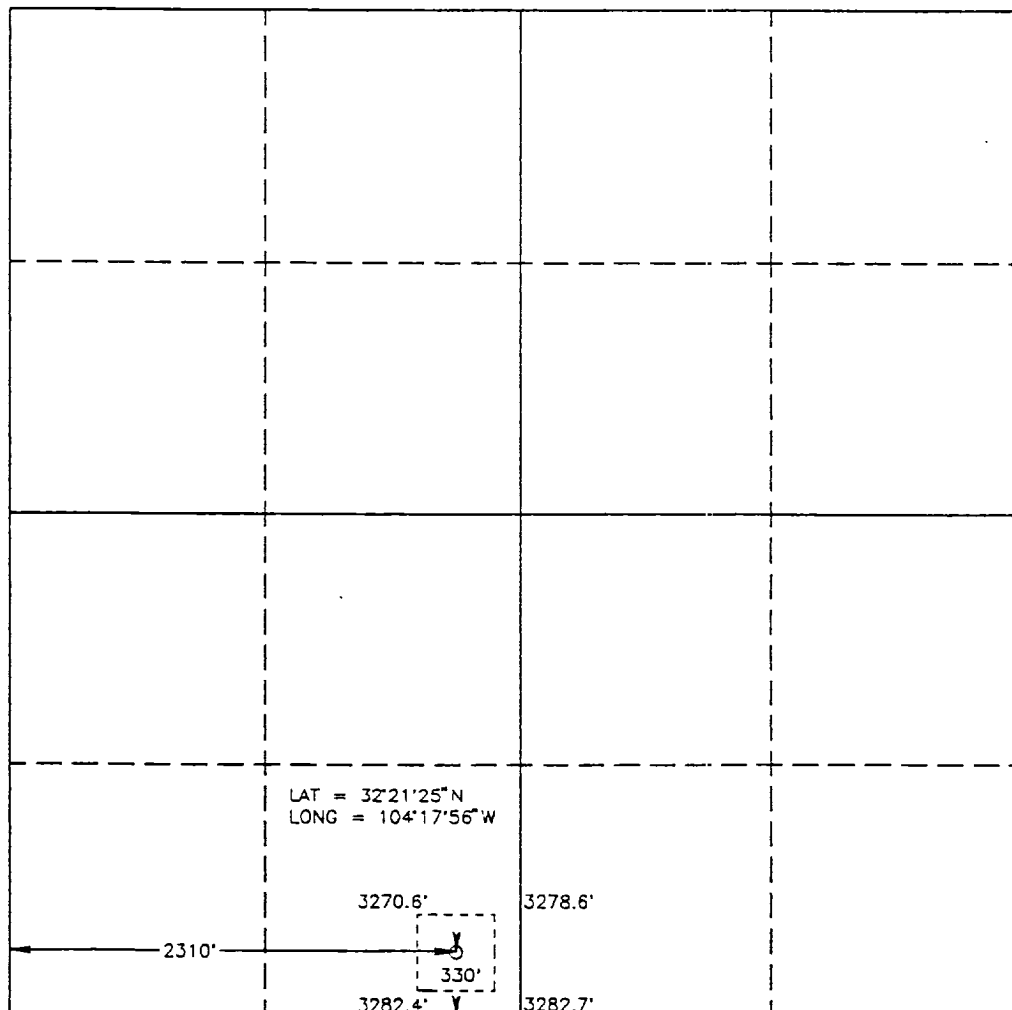
1000 Rio Brazos Rd., Aztec, NM 87410

WELL LOCATION AND ACREAGE DEDICATION PLAT

All Distances must be from the outer boundaries of the section

Operator COLLINS & WARE, INC.		Lease SHEEP DRAW FEDERAL		Well No. 4
Unit Letter N	Section 28	Township 22 SOUTH	Range 26 EAST NMPM	County EDDY
Actual Footage Location of Well: 330 feet from the SOUTH line and 2310 feet from the WEST line				
Ground Level Elev. 3280.9'	Producing Formation Delaware	Pool Happy Valley	Dedicated Acreage: 40 Acres	

1. Outline the acreage dedicated to the subject well by colored pencil or hatchure marks on the plat below.
 2. If more than one lease is dedicated to the well, outline each and identify the ownership thereof (both as to working interest and royalty).
 3. If more than one lease of different ownership is dedicated to the well, have the interest of all owners been consolidated by communitization, unitization, force-pooling, etc?
☐ Yes ☐ No If answer is "yes" type of consolidation _____
- If answer is "no" list of owners and tract descriptions which have actually been consolidated. (Use reverse side of this form necessary.)
- No allowable will be assigned to the well unit all interests have been consolidated (by communitization, unitization, forced-pooling, otherwise) or until a non-standard unit, eliminating such interest, has been approved by the Division.



OPERATOR CERTIFICATION

I hereby certify the the information contained herein is true and complete to the best of my knowledge and belief.

Signature
G. Thane Akins
Printed Name
G. Thane Akins

Position
Agent

Company
Collins & Ware, Inc.

Date
March 25, 1993

SURVEYOR CERTIFICATION

I hereby certify that the well location shown on this plat was plotted from field notes of actual surveys made by me or under my supervision, and that the same is true and correct to the best of my knowledge and belief.

Date Surveyed
FEBRUARY 25, 1993

Signature & Seal of
Professional Surveyor

GARY L. JONES
NEW MEXICO
Professional Surveyor
Certificate No. 3239
RONALD B. JONES, 7977
93-11-0310