

State of New Mexico
Energy, Minerals and Natural Resources Department

OIL CONSERVATION DIVISION

P.O. Box 2088
Santa Fe, New Mexico 87504-2088Submit to Appropriate
District Office
State Lease - 4 copies
Fee Lease - 3 copiesDISTRICT I
P.O. Box 1980, Hobbs, NM 88240DISTRICT II
P.O. Drawer DD, Artesia, NM 88210DISTRICT III
1000 Rio Brazos Rd., Aztec, NM 87410

WELL LOCATION AND ACREAGE DEDICATION PLAT

All Distances must be from the outer boundaries of the section

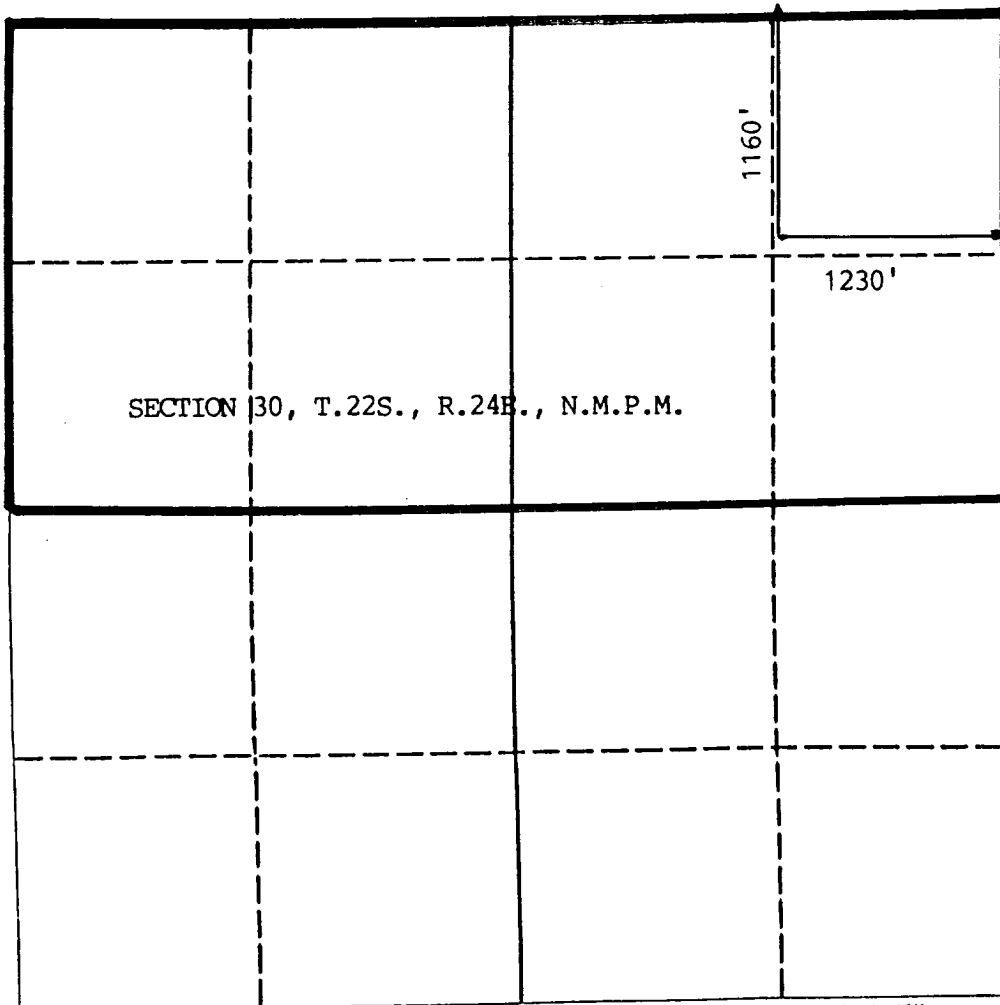
Operator MITCHELL ENERGY			Lease BANDANA 30 FEDERAL		Well No. #1
Unit Letter A	Section 30	Township 22S.	Range 24E.	County EDDY	
Actual Footage Location of Well: 1160 feet from the NORTH line and 1230 feet from the EAST line					
Ground level Elev. 4506	Producing Formation MORROW		Pool WILDCAT		Dedicated Acreage 320 Acres

- Outline the acreage dedicated to the subject well by colored pencil or hatchure marks on the plat below.
- If more than one lease is dedicated to the well, outline each and identify the ownership thereof (both as to working interest and royalty).
- If more than one lease of different ownership is dedicated to the well, have the interest of all owners been consolidated by communitization, unitization, force-pooling, etc.?

☐ Yes ☐ No If answer is "yes" type of consolidation _____

If answer is "no" list the owners and tract descriptions which have actually been consolidated. (Use reverse side of this form if necessary.) _____

No allowable will be assigned to the well until all interests have been consolidated (by communitization, unitization, forced-pooling, or otherwise) or until a non-standard unit, eliminating such interest, has been approved by the Division.



OPERATOR CERTIFICATION

I hereby certify that the information contained herein in true and complete to the best of my knowledge and belief.

Signature

George Mullen

Printed Name

George Mullen

Position

Regulatory Affairs Specialist

Company

Mitchell Energy Corporation

Date

August 5, 1993

SURVEYOR CERTIFICATION

I hereby certify that the well location shown on this plat was plotted from field notes of actual surveys made by me or under my supervision, and that the same is true and correct to the best of my knowledge and belief.

Date Surveyed

7/12/93

Signature & Seal of Professional Surveyor

6290

6290

6290

6290

6290

6290

6290

6290

BANDANA2