

Submit to Appropriate
District Office
State Lease - 4 copies
Fee Lease - 3 copies

State of New Mexico
Energy, Minerals and Natural Resources Department

Form C-102
Revised 1-1-89

OIL CONSERVATION DIVISION

P.O. Box 2088
Santa Fe, New Mexico 87504-2088

DISTRICT I
P.O. Box 1980, Hobbs, NM 88240

DISTRICT II
P.O. Drawer DD, Artesia, NM 88210

DISTRICT III
1000 Rio Brazos Rd., Aztec, NM 87410

WELL LOCATION AND ACREAGE DEDICATION PLAT

All Distances must be from the outer boundaries of the section

Operator DEVON ENERGY CORPORATION			Lease CACTUS STATE		Well No. 2
Unit Letter F	Section 16	Township 21 SOUTH	Range 26 EAST	NMPM	County EDDY
Actual Footage Location of Well:					
1980 feet from the NORTH line and		1945 feet from the WEST line			
Ground Level Elev. 3292.4	Producing Formation Delaware	Pool East Catclaw Draw		Dedicated Acreage: 40 Acres	
<p>1. Outline the acreage dedicated to the subject well by colored pencil or hatchure marks on the plat below.</p> <p>2. If more than one lease is dedicated to the well, outline each and identify the ownership thereof (both as to working interest and royalty).</p> <p>3. If more than one lease of different ownership is dedicated to the well, have the interest of all owners been consolidated by communitization, unitization, force-pooling, etc.?</p> <p><input type="checkbox"/> Yes <input type="checkbox"/> No If answer is "yes" type of consolidation _____</p> <p>If answer is "no" list of owners and tract descriptions which have actually been consolidated. (Use reverse side of this form necessary. _____)</p> <p>No allowable will be assigned to the well unit all interests have been consolidated (by communitization, unitization, forced-pooling, otherwise) or until a non-standard unit, eliminating such interest, has been approved by the Division.</p>					
			OPERATOR CERTIFICATION		
			<p>I hereby certify the the information contained herein is true and complete to the best of my knowledge and belief.</p> <p>Signature <i>Charles W. Horsman</i></p> <p>Printed Name Charles W. Horsman</p> <p>Position District Engineer</p> <p>Company Devon Energy Corporation (Nevada)</p> <p>Date August 24, 1993</p>		
			SURVEYOR CERTIFICATION		
			<p>I hereby certify that the well location shown on this plat was plotted from field notes of actual surveys made by me or under my supervision, and that the same is true and correct to the best of my knowledge and belief.</p> <p>Date Surveyed AUGUST 11, 1993</p> <p>Signature & Seal of Professional Surveyor </p> <p>Certificate No. JOHN W. JONES, 676 RONALD W. JONES, 323R JOHN W. JONES, 7977</p> <p>93-11-1455</p>		

Submit to Appropriate
District Office
State Lease - 6 copies
Fee Lease - 5 copies

State of New Mexico
Energy, Minerals and Natural Resources Department

Form C-101
Revised 1-1-89

OIL CONSERVATION DIVISION

DISTRICT I
P.O. Box 1980, Hobbs, NM 88240

DISTRICT II
P.O. Drawer DD, Artesia, NM 88210

DISTRICT III
1000 Rio Brazos Rd., Aztec, NM 87410

P.O. Box 2088
Santa Fe, New Mexico 87504-2088

API NO. (assigned by OCD on New Wells)

30-015-27739

5. Indicate Type of Lease

STATE ☒

FEE ☐

6. State Oil & Gas Lease No.

L-539

APPLICATION FOR PERMIT TO DRILL, DEEPEN, OR PLUG BACK

1a. Type of Work:

DRILL ☒

RE-ENTER ☐

DEEPEN ☐

PLUG BACK ☐

b. Type of Well:

OIL

WELL ☒

GAS

WELL ☐

OTHER ☐

SINGLE

ZONE ☐

MULTIPLE

ZONE ☐

7. Lease Name or Unit Agreement Name

Cactus State

2. Name of Operator

Devon Energy Corporation (Nevada) ✓

8. Well No.

#2

3. Address of Operator

20 North Broadway Suite 1500 Oklahoma City, OK 73102

9. Pool name or Wildcat

East Catclaw Draw

4. Well Location

Unit Letter F : 1980 Feet From The north Line and 1945 Feet From The west Line

Section 16

Township 21S

Range 26E

NMPM

Eddy

County

10. Proposed Depth

4500'

11. Formation

Delaware

12. Rotary or C.T.

rotary

13. Elevations (Show whether DF, RT, GR, etc.)

3292.4'

14. Kind & Status Plug. Bond

Blanket

15. Drilling Contractor

to be determined

16. Approx. Date Work will start

12/15/93

17.

PROPOSED CASING AND CEMENT PROGRAM

SIZE OF HOLE	SIZE OF CASING	WEIGHT PER FOOT	SETTING DEPTH	SACKS OF CEMENT	EST. TOP
17 1/2"	13 3/8"	48 ppf	350'	400 sx	surface
12 1/4"	8 5/8"	24 ppf	2200'	950 sx	surface
7 7/8"	5 1/2"	15.5 ppf	4500'	475 sx	surface

BOP's will be installed while drilling intermediate and production holes.

IN ABOVE SPACE DESCRIBE PROPOSED PROGRAM: IF PROPOSAL IS TO DEEPEN OR PLUG BACK, GIVE DATA ON PRESENT PRODUCTIVE ZONE AND PROPOSED NEW PRODUCTIVE ZONE. GIVE BLOWOUT PREVENTER PROGRAM, IF ANY.

I hereby certify that the information above is true and complete to the best of my knowledge and belief.

SIGNATURE

Charles W. Horsman

TITLE

District Engineer

DATE 11/11/93

(405)

TYPE OR PRINT NAME

Charles W. Horsman

TELEPHONE NO. 552-4508

(This space for State Use)

ORIGINAL SIGNED BY

MIKE WILLIAMS

SUPERVISOR, DISTRICT II

APPROVED BY

TITLE

DATE

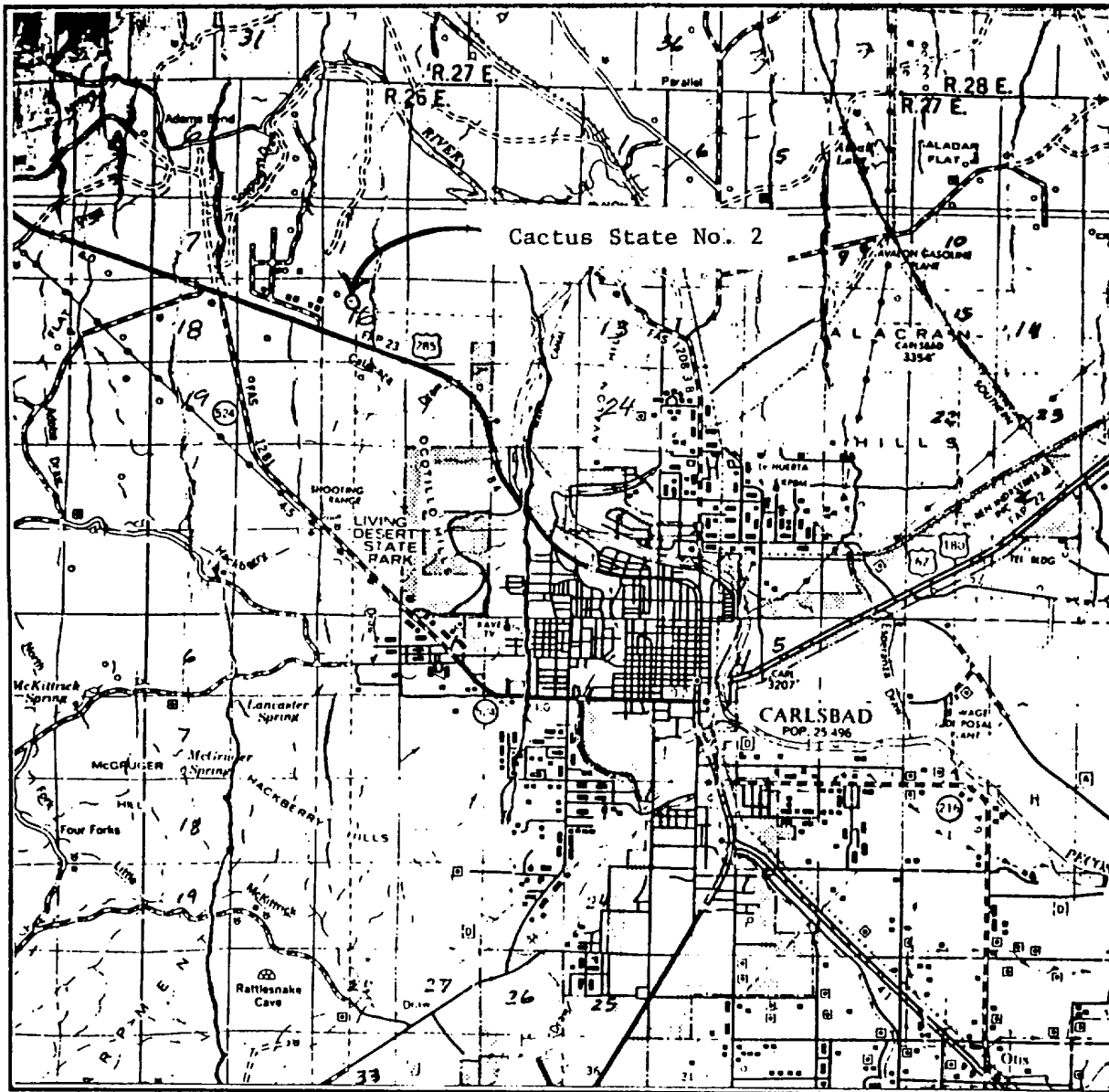
NOV 17 1993

CONDITIONS OF APPROVAL, IF ANY:

NOTIFY N.M.O.C.D. IN SUFFICIENT
TIME TO WITNESS CEMENTING THE
13 3/8, 8 5/8 CASING

APPROVAL VALID FOR 180 DAYS
PERMIT EXPIRES 5-17-94
UNLESS DRILLING UNDERWAY

VICINITY MAP

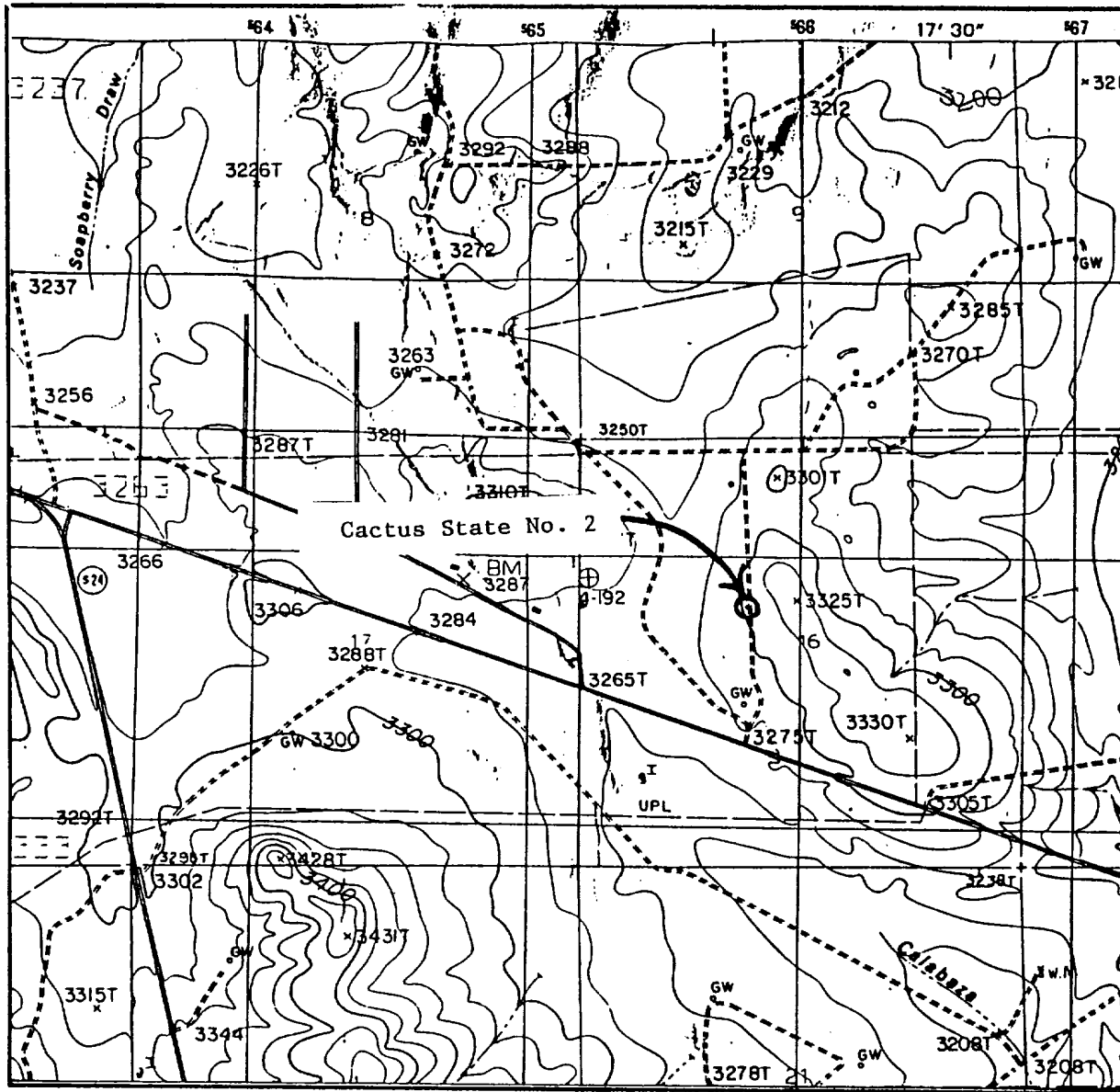


SCALE: 1" = 2 MILES

SEC. 16 TWP. 21S RGE. 26E
SURVEY N.M.P.M.
COUNTY Eddy STATE NM
DESCRIPTION 1980' FNL & 1945' FWL
ELEVATION 3292.4
OPERATOR Devon Energy Corp.
LEASE Cactus State #2

JOHN WEST ENGINEERING
HOBBS, NEW MEXICO
(505) 393-3117

LOCATION VERIFICATION MAP



SCALE: 1" = 2000'

CONTOUR INTERVAL 20'

SEC. 16 TWP. 21S RGE. 26E

SURVEY N.M.P.M.

COUNTY Eddy STATE NM

DESCRIPTION 1980' FNL & 1945' FWL

ELEVATION 3292.4

OPERATOR Devon Energy Corp.

LEASE Cactus State #2

U.S.G.S. TOPOGRAPHIC MAP

Carlsbad West, NM

JOHN WEST ENGINEERING
HOBBS, NEW MEXICO
(505) 393-3117