

APPLICATION FOR PERMIT TO DRILL, DEEPEN, OR PLUG BACK

1a. TYPE OF WORK

DRILL ☒

DEEPEN ☐

PLUG BACK ☐

b. TYPE OF WELL

OIL  
WELL ☒

GAS  
WELL ☐

OTHER

SINGLE  
ZONE ☒

MULTIPLE  
ZONE ☐

2. NAME OF OPERATOR

OXY USA Inc. ✓

3. ADDRESS OF OPERATOR

P. O. Box 50250, Midland, TX 79710-0250

4. LOCATION OF WELL (Report location clearly and in accordance with any State requirements.)

At surface

660' FNL and 1980' FEL

At proposed prod. zone

Same

14. DISTANCE IN MILES AND DIRECTION FROM NEAREST TOWN OR POST OFFICE\*

11 miles NE of Carlsbad, New Mexico

15. DISTANCE FROM PROPOSED\*  
LOCATION TO NEAREST  
PROPERTY OR LEASE LINE, FT.  
(Also to nearest drig. unit line, if any)

660'

16. NO. OF ACRES IN LEASE

1720

17. NO. OF ACRES ASSIGNED  
TO THIS WELL

80

18. DISTANCE FROM PROPOSED LOCATION\*  
TO NEAREST WELL, DRILLING, COMPLETED,  
OR APPLIED FOR, ON THIS LEASE, FT.

1320'

19. PROPOSED DEPTH

6550'

20. ROTARY OR CABLE TOOLS

Rotary

21. ELEVATIONS (Show whether DF, RT, GR, etc.)

3272.7' GR

22. APPROX. DATE WORK WILL START\*

March 1994

23. PROPOSED CASING AND CEMENTING PROGRAM\* or top of Rustler Anhydrite

SIZE OF HOLE	SIZE OF CASING	WEIGHT PER FOOT	SETTING DEPTH	QUANTITY OF CEMENT
17-1/2"	13-3/8" H-40	48#	400'*	415 sx Class C (circ. to surface)
11"	8-5/8" K-55	24# & 32#	3000'	840 sx Class C & lightweight (circ.)
7-7/8"	5-1/2" K-55	15.5#	6550'	495 sx Class C & lightweight (TOC at 2500')

It is proposed to drill this well to a TD of 6550' or to the base of the first Bone Springs sand and test the Bone Springs formation.

The Blowout Prevention Program is as follows:

- 1) One set of drill pipe rams
- 2) One set of blind rams
- 3) One Hydril

Part ID-1  
3-18-94  
New Loc & API

IN ABOVE SPACE DESCRIBE PROPOSED PROGRAM: If proposal is to deepen or plug back, give data on present productive zone and proposed new productive zone. If proposal is to drill or deepen directionally, give pertinent data on subsurface locations and measured and true vertical depths. Give blowout prevention program, if any.

24.

SIGNED

TITLE Operations Engineer

DATE

12/17/93

(This space for Federal or State office use)

PERMIT NO.

APPROVAL DATE

(ORIG. SCD) RICHARD L. MEANY

AREA MANAGER

FEB 4 1994

APPROVED BY

TITLE

DATE

CONDITIONS OF APPROVAL, IF ANY:

APPROVAL SUBJECT TO  
GENERAL REQUIREMENTS AND  
SPECIAL STIPULATIONS  
ATTACHED

\*See instructions On Reverse Side

OIL CONSERVATION DIVISION

P.O. Box 2088

Santa Fe, New Mexico 87504-2088

DISTRICT I

P.O. Box 1888, Hobbs, NM 88240

DISTRICT II

P.O. Drawer 88, Artesia, NM 88210

DISTRICT III

1000 Elie Bruce Rd., Aztec, NM 87410

WELL LOCATION AND ACREAGE DEDICATION PLAT

All Distances must be from the outer boundaries of the section

Operator OXY USA, INC.		Lease GOVERNMENT AB		Well No. 7
Unit Letter C	Section 10	Township 20 SOUTH	Range 28 EAST NMPM	County EDDY

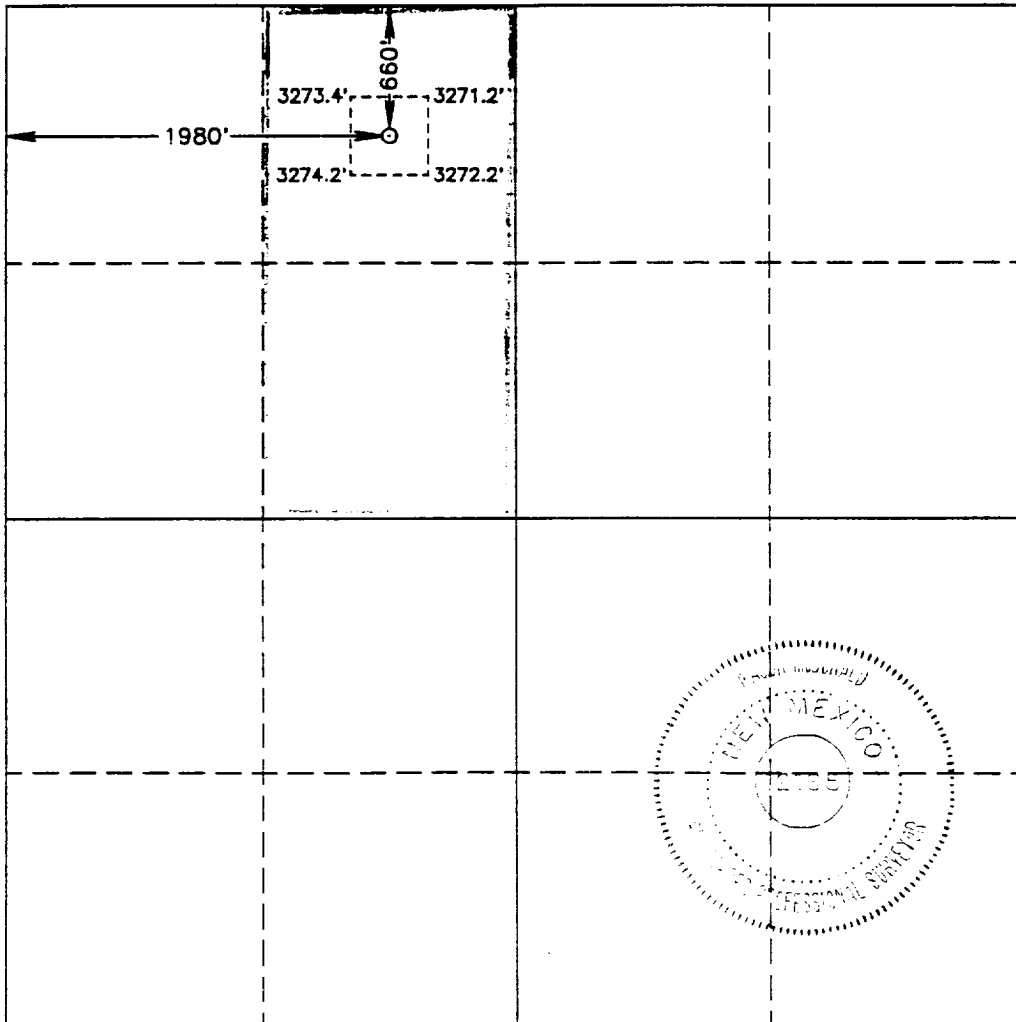
Actual Footage Location of Well:

660 feet from the NORTH line and		1980 feet from the WEST line	
Ground Level Elev. 3272.7	Producing Formation Bone Springs	Pool EDDY AND GROUP 3 Old Millman Ranch, Bone Springs	Dedicated Acreage: 80 Acres

1. Outline the acreage dedicated to the subject well by colored pencil or hatchure marks on the plat below.
2. If more than one lease is dedicated to the well, outline each and identify the ownership thereof (both as to working interest and royalty).
3. If more than one lease of different ownership is dedicated to the well, have the interest of all owners been consolidated by communitization, unitization, force-pooling, etc.?  
☐ Yes ☐ No If answer is "yes" type of consolidation \_\_\_\_\_

If answer is "no" list of owners and tract descriptions which have actually been consolidated. (Use reverse side of this form necessary.)

No allowable will be assigned to the well unit all interests have been consolidated (by communitization, unitization, forced-pooling, otherwise) or until a non-standard unit, eliminating such interest, has been approved by the Division.



OPERATOR CERTIFICATION

I hereby certify the the information contained herein is true and complete to the best of my knowledge and belief.

Signature

Robert P. Elliott

Printed Name

Robert P. Elliott

Position

Engineer

Company

OXY USA Inc.

Date

November 23, 1993

SURVEYOR CERTIFICATION

I hereby certify that the well location shown on this plat was plotted from field notes of actual surveys made by me or under my supervision, and that the same is true and correct to the best of my knowledge and belief.

Date Surveyed

NOVEMBER 19, 1993

Signature & Seal of  
Professional Surveyor

Maureen McDonald  
Certificate No. MAUREEN McDONALD 12185

MC GEE DRILLING CORPORATION  
BLOWOUT PREVENTOR SCHEME  
RIG 1

12" 3000# Annular & BOP & Manifold

