

OIL CONSERVATION DIVISION

DISTRICT I
 P.O. Box 1860, Hobbs, NM 88240

P.O. Box 2088

Santa Fe, New Mexico 87504-2088

DISTRICT II
 P.O. Drawer DD, Artesia, NM 88210

WELL LOCATION AND ACREAGE DEDICATION PLAT

All Distances must be from the outer boundaries of the section

DISTRICT III
 1000 Eto Brazos Ed., Artec, NM 87410

Operator OXY USA, INC.		Lease GOVERNMENT AB		Well No. 8
Unit Letter B	Section 10	Township 20 SOUTH	Range 28 EAST NMPM	County EDDY

Actual Footage Location of Well:
 810 feet from the NORTH line and 1980 feet from the EAST line

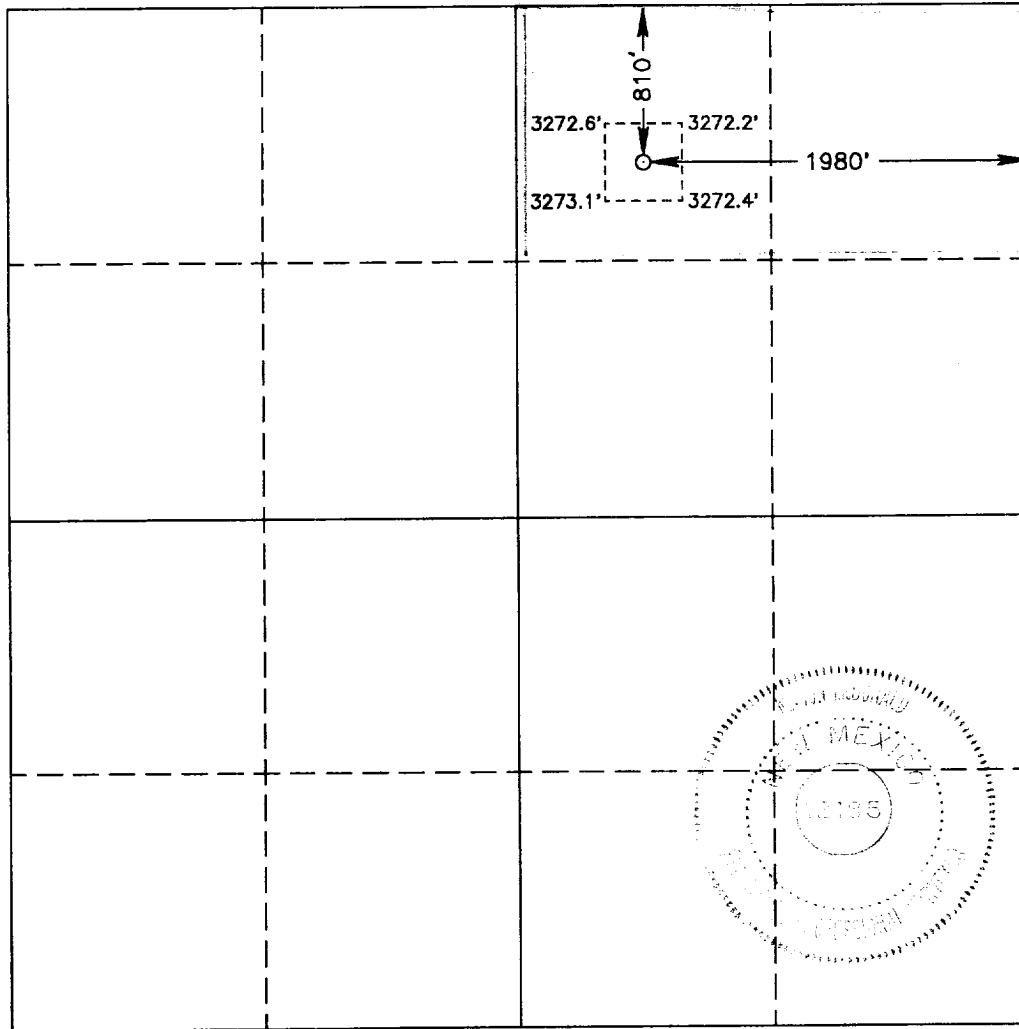
Ground Level Elev. 3273'	Producing Formation BONE SPRINGS	Pool OLD MILLMAN RANCH, BONE SPRINGS	Dedicated Acreage: 80 Acres
-----------------------------	-------------------------------------	---	--------------------------------

- Outline the acreage dedicated to the subject well by colored pencil or hachure marks on the plat below.
- If more than one lease is dedicated to the well, outline each and identify the ownership thereof (both as to working interest and royalty).
- If more than one lease of different ownership is dedicated to the well, have the interest of all owners been consolidated by communitization, unitization, force-pooling, etc.?

Yes No If answer is "yes" type of consolidation _____

If answer is "no" list of owners and tract descriptions which have actually been consolidated. (Use reverse side of this form necessary.)

No allowable will be assigned to the well unit all interests have been consolidated (by communitization, unitization, forced-pooling, otherwise) or until a non-standard unit, eliminating such interest, has been approved by the Division.



OPERATOR CERTIFICATION

I hereby certify that the information contained herein is true and complete to the best of my knowledge and belief.

Signature
Robert P. Elliott

Printed Name
 Robert P. Elliott

Position
 Engineer

Company
 OXY USA Inc.

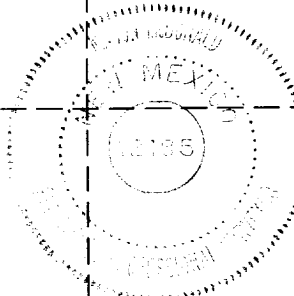
Date
 2-8-94

SURVEYOR CERTIFICATION

I hereby certify that the well location shown on this plat was plotted from field notes of actual surveys made by me or under my supervision, and that the same is true and correct to the best of my knowledge and belief.

Date Surveyed
 JANUARY 26, 1994

Signature & Seal of
 Professional Surveyor



Certificate No. MASON McDONALD 12185

Mason McDonald

