

OIL CONSERVATION DIVISION

P.O. Box 2088  
Santa Fe, New Mexico 87504-2088

DISTRICT I

P.O. Box 1980, Hobbs, NM 88240

DISTRICT II

P.O. Drawer DD, Artesia, NM 88210

DISTRICT III

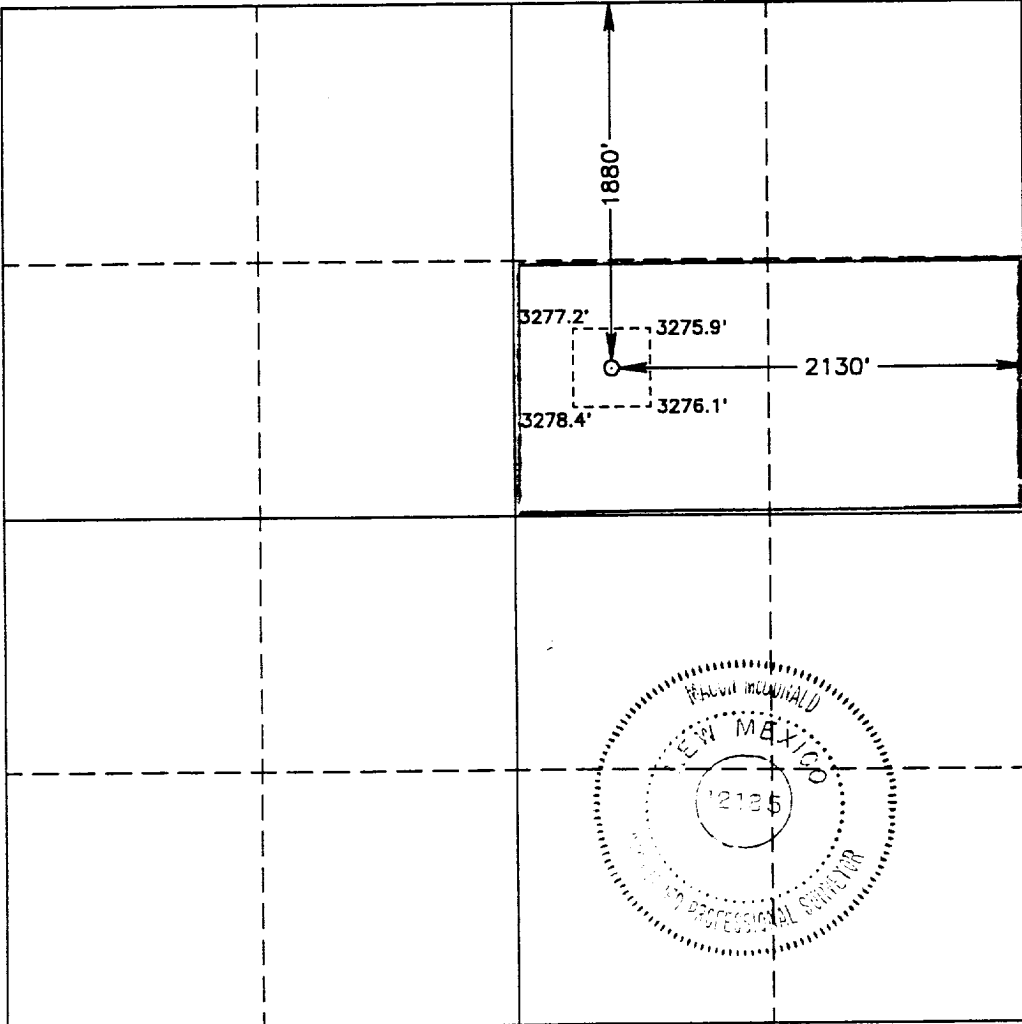
1000 Rio Bravos Rd., Artee, NM 87410

WELL LOCATION AND ACREAGE DEDICATION PLAT

All Distances must be from the outer boundaries of the section

Operator OXY USA, INC.			Lease GOVERNMENT S		Well No. 5
Unit Letter G	Section 3	Township 20 SOUTH	Range 28 EAST	NMPM	County EDDY
Actual Footage Location of Well: 1880 feet from the NORTH line and 2130 feet from the EAST line					
Ground Level Elev. 3276.8'	Producing Formation Bone Springs	Pool UND <del>Old Millman Ranch, Bone Springs</del>			Dedicated Acreage: 80 Acres

- Outline the acreage dedicated to the subject well by colored pencil or hatchure marks on the plat below.
- If more than one lease is dedicated to the well, outline each and identify the ownership thereof (both as to working interest and royalty).
- If more than one lease of different ownership is dedicated to the well, have the interest of all owners been consolidated by communitization, unitization, force-pooling, etc?  
☐ Yes ☐ No If answer is "yes" type of consolidation \_\_\_\_\_  
If answer is "no" list of owners and tract descriptions which have actually been consolidated. (Use reverse side of this form necessary.)  
No allowable will be assigned to the well unit all interests have been consolidated (by communitization, unitization, forced-pooling, otherwise) or until a non-standard unit, eliminating such interest, has been approved by the Division.



OPERATOR CERTIFICATION

I hereby certify the the information contained herein is true and complete to the best of my knowledge and belief.

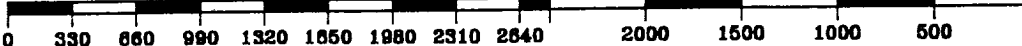
Signature  
*Robert P. Elliott*  
Printed Name  
Robert P. Elliott  
Position  
Engineer  
Company  
OXY USA Inc.  
Date  
November 23, 1993

SURVEYOR CERTIFICATION

I hereby certify that the well location shown on this plat was plotted from field notes of actual surveys made by me or under my supervision, and that the same is true and correct to the best of my knowledge and belief.

Date Surveyed  
NOVEMBER 20, 1993  
Signature & Seal of  
Professional Surveyor

*Macon McDonald*  
Certificate No. MACON McDONALD 12185



93-11-2258