

c/sf

NM OIL & GAS COMMISSION
DRAWER DD
ARTESIA, NM 88210

Form 3160-3
(December 1990)

SUBMIT IN TRIPLICATE*
(Other instructions on
reverse side)

Form approved.
Budget Bureau No. 1004-0136
Expires: December 31, 1991

UNITED STATES
DEPARTMENT OF THE INTERIOR
BUREAU OF LAND MANAGEMENT

APPLICATION FOR PERMIT TO DRILL OR DEEPEN

5. LEASE DESIGNATION AND SERIAL NO.

LC-069144-11 mt

6. IF INDIAN, ALLOTTEE OR TRIBE NAME

7. UNIT AGREEMENT NAME

Big Eddy Unit

8. FARM OR LEASE NAME, WELL NO.

Big Eddy Unit #133

9. API WELL NO.

30-015-28043

10. FIELD AND POOL, OR WILDCAT

U.S. DELAWARE

Quabada Ridge Wildcat

11. SEC., T., R., M., OR BLK.

AND SURVEY OR AREA 61590

Section 27, T-21-S, R-29-E

12. COUNTY OR PARISH

Eddy

13. STATE

New Mexico

17. NO. OF ACRES ASSIGNED
TO THIS WELL

40

20. ROTARY OR CABLE TOOLS

Rotary

22. APPROX. DATE WORK WILL START*

Upon Approval

Secretary's Potash

1a. TYPE OF WORK

DRILL ☒

DEEPEN ☐

b. TYPE OF WELL

OIL
WELL ☒

GAS
WELL ☐

OTHER

SINGLE
ZONE ☒

RECEIVED
MULTIPLE
ZONE ☐

2. NAME OF OPERATOR

Bass Enterprises Production Co.

3. ADDRESS AND TELEPHONE NO.

P.O. Box 2760, Midland, Texas 79702; (915) 683-2277

4. LOCATION OF WELL (Report location clearly and in accordance with any State requirements.)

At surface
1980' FNL & 1780' FWL, Section 27, T-21-S, R-29-E

Same

14. DISTANCE IN MILES AND DIRECTION FROM NEAREST TOWN OR POST OFFICE*

14 miles East of Carlsbad, New Mexico

15. DISTANCE FROM PROPOSED*

LOCATION TO NEAREST
PROPERTY OR LEASE LINE, FT.
(Also to nearest drig. unit line, if any)

860

16. NO. OF ACRES IN LEASE

2020.86

18. DISTANCE FROM PROPOSED LOCATION*
TO NEAREST WELL, DRILLING, COMPLETED,
OR APPLIED FOR, ON THIS LEASE, FT.

2867.75

19. PROPOSED DEPTH

7200'

21. ELEVATIONS (Show whether DF, RT, GR, etc.)

3464' GR

23.

PROPOSED CASING AND CEMENTING PROGRAM

| SIZE OF HOLE | GRADE SIZE OF CASING | WEIGHT PER FOOT | SETTING DEPTH | QUANTITY OF CEMENT |
|--------------|----------------------|-----------------|---------------|---|
| *14 3/4" | 11 3/4" WC-40 | 42# | 390' | 280 Sx <u>circ to surface</u> |
| **11" | 8 5/8" WC-50 | 32# | 3280' | 660 Sx <u>circ to surface</u> |
| *** 7 7/8" | 5 1/2" K-55 | 15.5# | 7200' | 580 Sx (Tie back to int. csg @ 3080'.) |

* Surface casing to be set +/- 100' above the salt in the Rustler Anhydrite.

** Intermediate casing to be set in the top of the Lamar Lime.

*** D.V. Tool to be set at +/- 5000' ; Cement to tie back to 3080'.

Post #D-1
7-29-94
New Line & API

Drilling procedure, BOP diagram, anticipated tops and surface use plans attached.

Note: This well is located outside of the R-111 Potash Areas, but inside the
Secretarial Area.

CERTIFIED #P 237 023 590 - BGH:PGO

IN ABOVE SPACE DESCRIBE PROPOSED PROGRAM: If proposal is to deepen, give data on present productive zone and proposed new productive zone. If proposal is to drill or deepen directionally, give pertinent data on subsurface locations and measured and true vertical depths. Give blowout preventer program, if any.

24.

SIGNED

William R. Rannach

TITLE Division Drilling Supt.

DATE

4-8-94

(This space for Federal or State office use)

PERMIT NO.

APPROVAL DATE

APPROVAL SUBJECT TO
GENERAL REQUIREMENTS AND
SPECIAL STIPULATIONS
ATTACHED

Application approval does not warrant or certify that the applicant holds legal or equitable title to those rights in the subject lease which would entitle the applicant to conduct operations thereon.
CONDITIONS OF APPROVAL, IF ANY:

APPROVED BY

Isa F. Splendris

TITLE

For State Director

DATE

*See Instructions On Reverse Side

Title 18 U.S.C. Section 1001, makes it a crime for any person knowingly and willfully to make to any department or agency of the United States any false, fictitious or fraudulent statements or representations as to any matter within its jurisdiction.

DISTRICT I
P.O. Box 1980, Hobbs, NM 88240

DISTRICT II
P.O. Drawer DD, Artesia, NM 88210

DISTRICT III
1000 Rio Brazos Rd., Aztec, NM 87410

State of New Mexico
Energy, Minerals and Natural Resources Department

Form C-102
Revised February 10, 1994
Instruction on back
Submit to Appropriate District Office
State Lease - 4 Copies
Fee Lease - 3 Copies

OIL CONSERVATION DIVISION

P.O. Box 2088
Santa Fe, New Mexico 87504-2088

☐ AMENDED REPORT

WELL LOCATION AND ACREAGE DEDICATION PLAT

| | | |
|-----------------------------------|---|---|
| API Number 30-015-28043 | Pool Code 61590 | Pool Name Quahada Ridge Wildecat U.S.; DELAWARE |
| Property Code | Property Name BIG EDDY UNIT | Well Number 133 |
| OGRID No. 001801 | Operator Name BASS ENTERPRISES PRODUCTION CO. | Elevation 3464' |

Surface Location

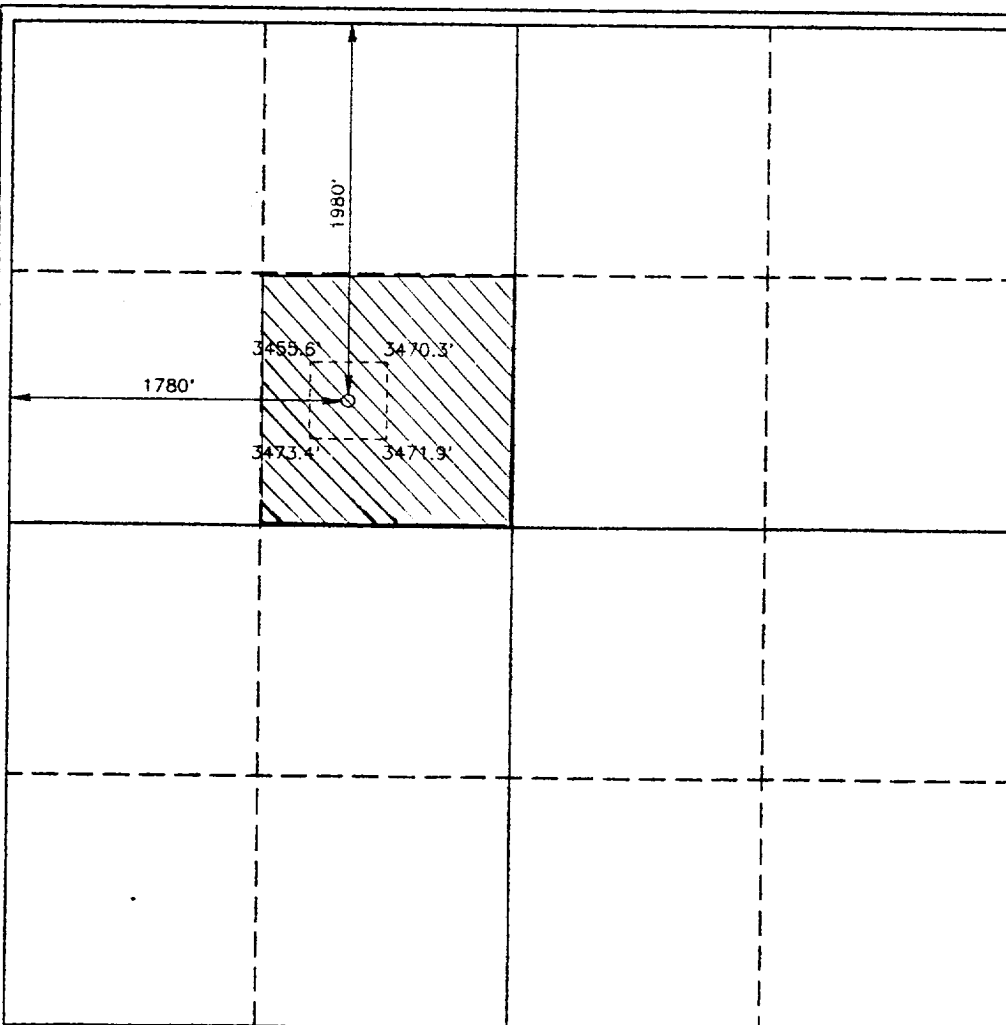
| | | | | | | | | | |
|---------------------------|----------------------|------------------------|---------------------|---------|------------------------------|----------------------------------|------------------------------|-------------------------------|-----------------------|
| UL or lot No. F | Section 27 | Township 21S | Range 29E | Lot Idn | Feet from the 1980 | North/South line NORTH | Feet from the 1780 | East/West line WEST | County EDDY |
|---------------------------|----------------------|------------------------|---------------------|---------|------------------------------|----------------------------------|------------------------------|-------------------------------|-----------------------|

Bottom Hole Location If Different From Surface

| | | | | | | | | | |
|---------------|---------|----------|-------|---------|---------------|------------------|---------------|----------------|--------|
| UL or lot No. | Section | Township | Range | Lot Idn | Feet from the | North/South line | Feet from the | East/West line | County |
|---------------|---------|----------|-------|---------|---------------|------------------|---------------|----------------|--------|

| | | | |
|------------------------------|-----------------------------|--------------------------------|-----------|
| Dedicated Acres 40 | Joint or Infill N | Consolidation Code U | Order No. |
|------------------------------|-----------------------------|--------------------------------|-----------|

NO ALLOWABLE WILL BE ASSIGNED TO THIS COMPLETION UNTIL ALL INTERESTS HAVE BEEN CONSOLIDATED
OR A NON-STANDARD UNIT HAS BEEN APPROVED BY THE DIVISION



OPERATOR CERTIFICATION

I hereby certify the the information
contained herein is true and complete to the
best of my knowledge and belief.

William R. Dannels
Signature

William R. Dannels
Printed Name

Division Drilling Supt.
Title

4-8-94
Date

SURVEYOR CERTIFICATION

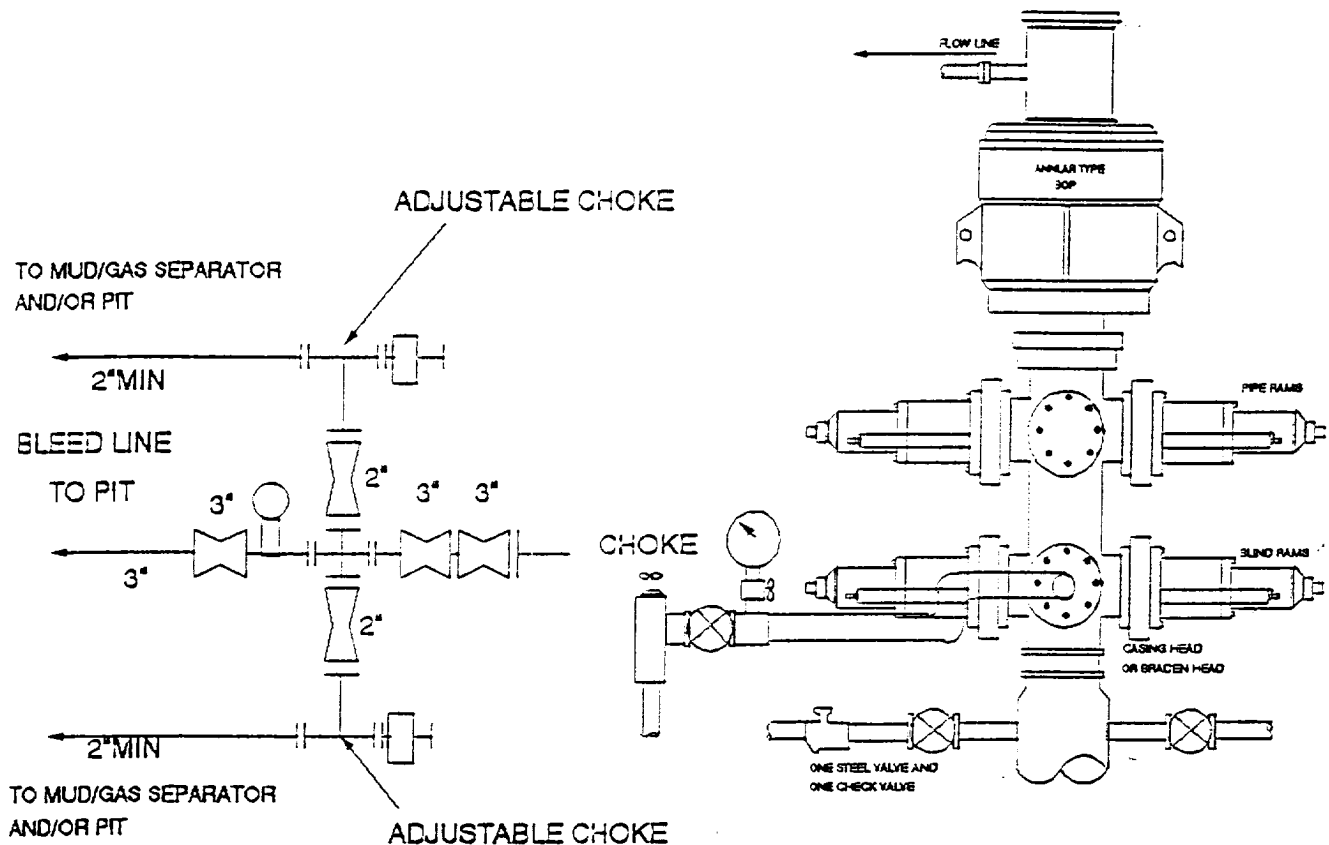
I hereby certify that the well location shown
on this plat was plotted from field notes of
actual surveys made by me or under my
supervision, and that the same is true and
correct to the best of my belief.

March 31, 1994

Date Surveyed
Signature of **JOHN L. JONES**
Professional Surveyor

W.O. Num. 24-11-0475
Certificate No. **JOHN W. WEST** 676
JOHN L. JONES 3239
JOHN L. JONES 7977

3000 PSI WP



THE FOLLOWING CONSTITUTE MINIMUM BLOWOUT PREVENTER REQUIREMENTS

- A. One double gate blowout preventer with lower rams for pipe and upper rams blind, all hydraulically controlled.
- B. Opening on preventers between rams to be flanged, studded or clamped and at least two inches in diameter.
- C. All connections from operating manifold to preventers to be all steel hose or tube a minimum of one inch in diameter.
- D. The available closing pressure shall be at least 15% in excess of that required with sufficient volume to operate (close, open, and re-close) the preventers.
- E. All connections to and from preventers to have a pressure rating equivalent to that of the BOP's.
- F. Manual controls to be installed before drilling cement plug.
- G. Valve to control flow through drill pipe to be located on rig floor.
- H. Choke may be either ~~positive~~ or adjustable. Choke spool may be used between rams.

(SSS) only